

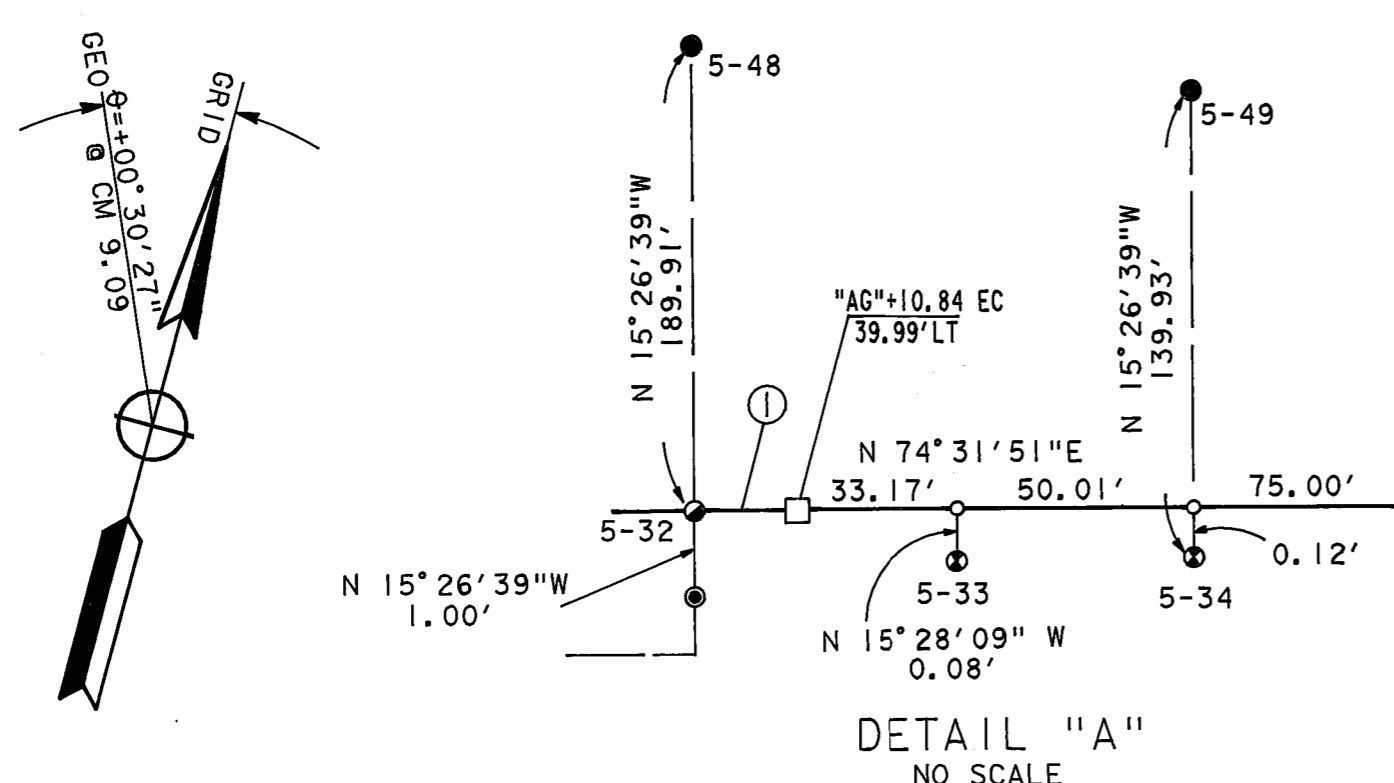
FOUND POINTS

SECT	PT	COORDINATES		DESCRIPTION	RECORDED			SECT	PT	COORDINATES		DESCRIPTION	RECORDED		
		NORTH	EAST		BK	OF	PG			NORTH	EAST		BK	OF	PG
5	6	357,443.067	2,216,101.704	CENTERLINE MONUMENT				5	35	357,523.569	2,216,243.315	LEAD FILLED HOLE IN WALK			
5	15	357,642.049	2,216,970.730	3/4" I.P. W/WD PLUG-WASHER LS 2322				5	36	357,546.824	2,216,327.213	3/4" I.P.			64
5	17	357,561.885	2,216,680.775	1/2" I.P. W/WD PLUG-WASHER LS 3202	4	RS	64	5	43	357,295.831	2,216,391.019	1/2" I.P. w/N AND T. LS 3202			64
5	18	357,562.092	2,216,681.796	3/4" I.P. W/WD PLUG-WASHER LS 2322	4	RS	64	5	44	357,356.512	2,216,246.521	3/4" I.P. w/N AND T. LS 3202			64
5	19	357,574.415	2,216,680.805	1/2" I.P. W/WD PLUG-WASHER LS 3202	4	RS	64	5	46	357,304.265	2,216,053.324	3/4" I.P. TAGGED ILLEGIBLE			
5	20	357,548.143	2,216,584.107	1/2" I.P. BENT W/WD PLUG-WASHER	4	RS	64	5	48	357,663.296	2,216,035.645	3/4" I.P. w/PLUG AND TAG LS ILLEGIBLE			
5	21	357,535.020	2,216,584.171	1/2" I.P.	4	RS	64	5	49	357,638.499	2,216,133.750	3/4" I.P. w/NAIL AND TAG LS ILLEGIBLE			
5	25	357,494.889	2,216,439.438	1/2" I.P. W/WD PLUG-WASHER LS 3202	4	RS	64	5	50	357,658.491	2,216,206.048	3/4" I.P. w/NAIL AND TAG LS ILLEGIBLE			
5	26	357,483.662	2,216,391.001	3/4" I.P.				5	51	357,729.844	2,216,276.583	3/4" I.P. w/PLUG&TAG LS3202			
5	27	357,495.763	2,216,391.193	3/4" REBAR IN AC											
5	28	357,470.703	2,216,342.815	3/4" I.P.											
5	29	357,443.214	2,216,245.595	1/2" I.P.											
5	30	357,386.691	2,216,053.262	NAIL/WASHER IN BK-WALK ILLEGIBLE											
5	33	357,490.323	2,216,122.802	SCREW IN LEAD FILLED HOLE IN BK-WALK	4	RS	64								
5	34	357,503.626	2,216,171.012	CHS "X" w/ LEAD FILLED HOLE@CNTR.	4	RS	64								

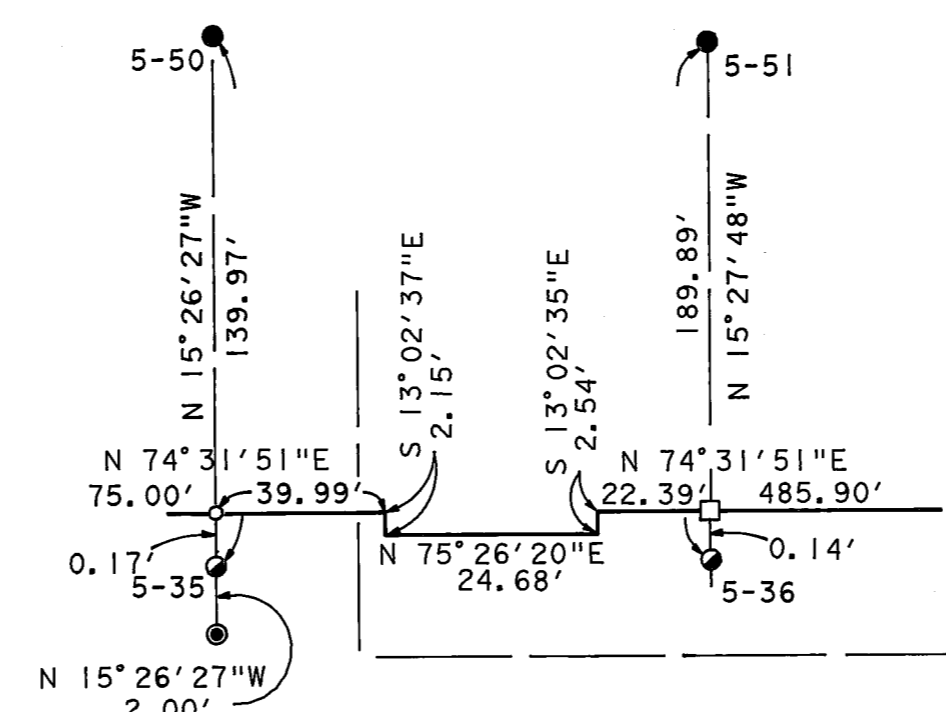
LEGEND

- FOUND R/W MONUMENT
 - SET 3/4" REBAR w/ALUM. CAP STAMPED "CALTRANS"
 - MONUMENT FOUND AS NOTED
 - ⊙ MONUMENT FOUND AS NOTED AND DESTROYED DURING CONSTRUCTION
 - ⊚ MONUMENT FOUND AS NOTED AND DESTROYED DURING CONSTRUCTION REPLACED WITH 1/8" COPPER DISK STAMPED "CALTRANS"
 - ⊛ MONUMENT FOUND AS NOTED AND DESTROYED DURING CONSTRUCTION REPLACED WITH 3/4" REBAR & ALUM. CAP STAMPED "CALTRANS"
 - ⊙ SET 1/8" COPPER DISK STAMPED "CALTRANS" IN SIDEWALK
 - ▲ FOUND CALTRANS CONTROL LINE MONUMENT
 - △ SET CALTRANS CONTROL LINE MONUMENT CALIF. DEPT. OF TRANSPORTATION 2 1/4" BRASS DISK STAMPED AS NOTED
 - △ FD. N.G.S. TRIANGULATION STATION
 - ▲ FD. CALTRANS HORIZONTAL CONTROL STATION
- 5-14 SECTION-POINT No.
○ NO MONUMENT FOUND OR SET

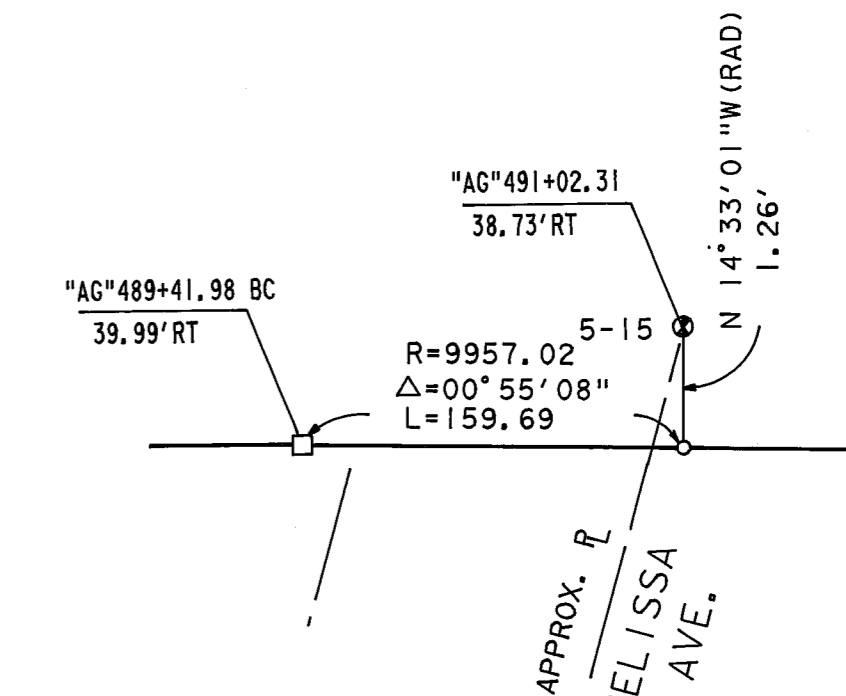
SCREW IN



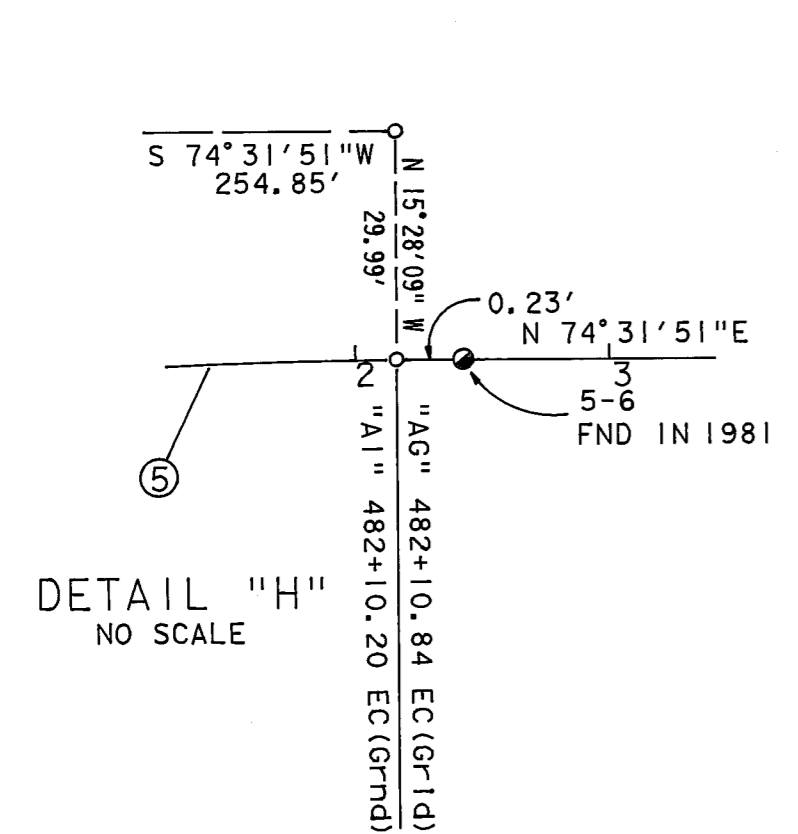
DETAIL "A" NO SCALE



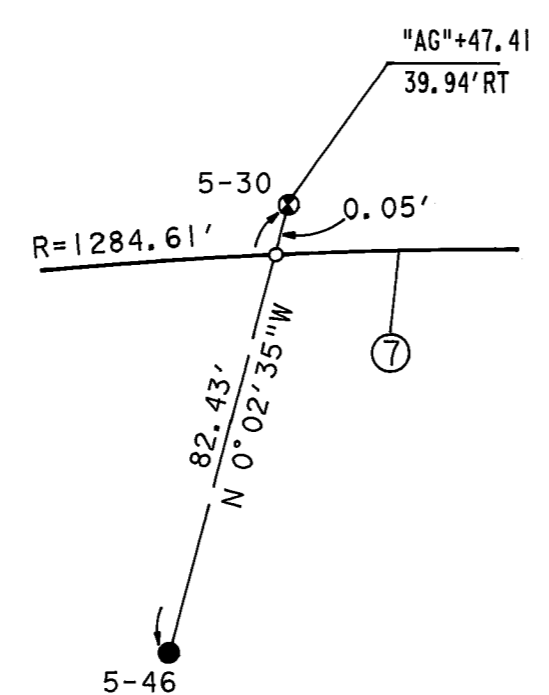
DETAIL "B" NO SCALE



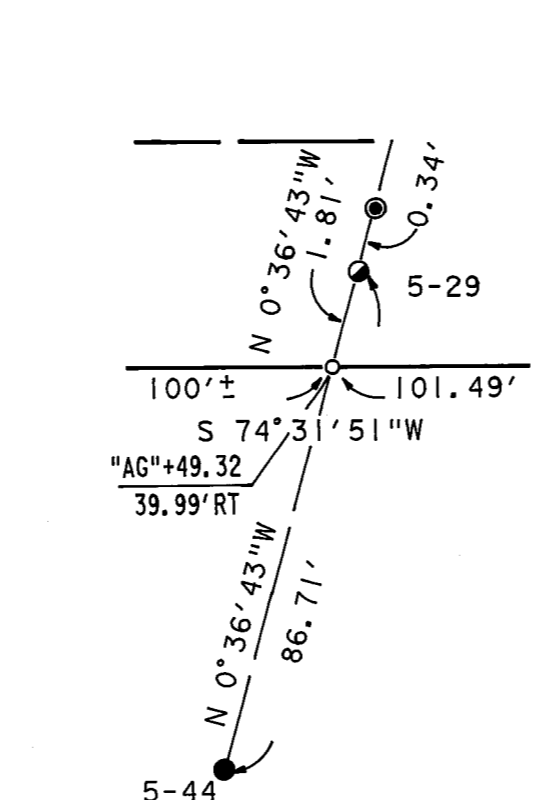
DETAIL "C" NO SCALE



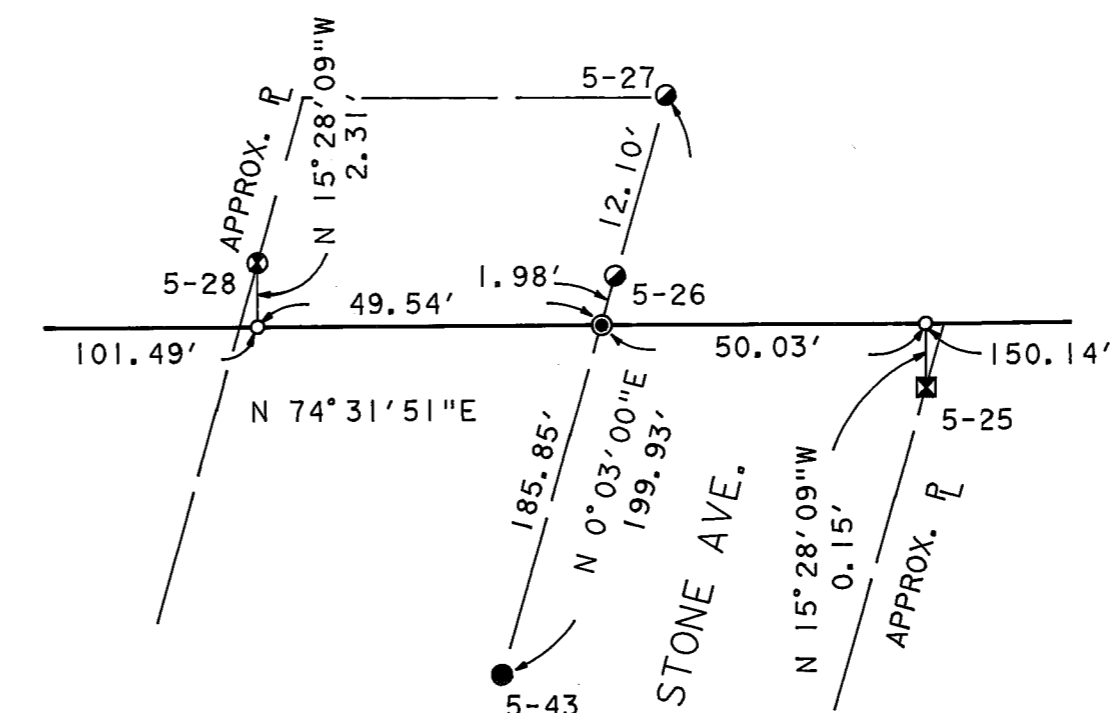
DETAIL "H" NO SCALE



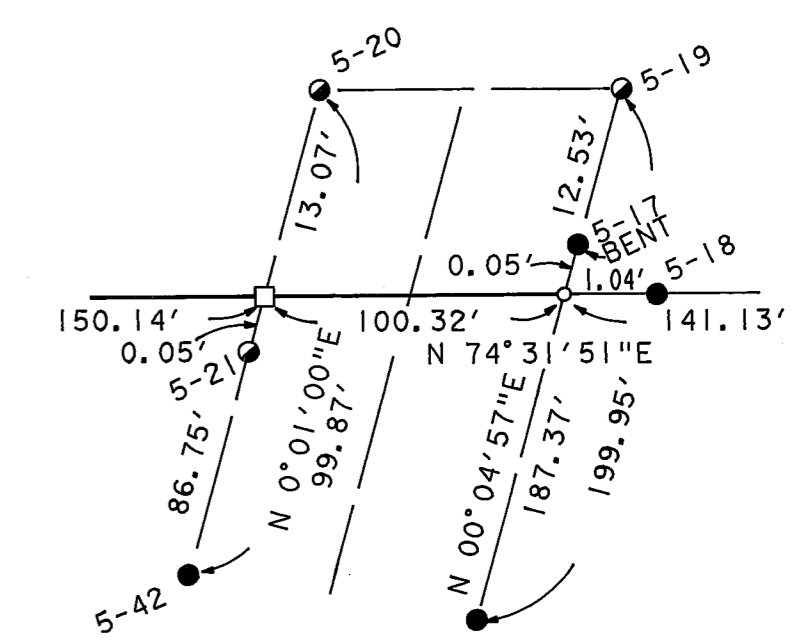
DETAIL "G" NO SCALE



DETAIL "F" NO SCALE



DETAIL "E" NO SCALE



DETAIL "D" NO SCALE

EXCEPTING THOSE SHOWN OTHERWISE, ALL DISTANCES AND BEARINGS ARE GRID, BASED ON THE CALIFORNIA COORDINATE SYSTEM OF 1927, ZONE I. TO OBTAIN GROUND LEVEL DISTANCES, MULTIPLY GRID DISTANCES BY 1.0002803.

GRID WAS ESTABLISHED FROM U.S.C. & G.S. TRIANGULATION STATIONS:

CHESTER	N	348,414.47	&	GOULD	N	354,609.31
AIRPORT	E	2,212,062.33			E	2,234,383.58

SUPPLEMENTARY INFORMATION MAY BE OBTAINED FROM THE DISTRICT OFFICE, SURVEY DEPARTMENT OR RIGHT OF WAY ENGINEERING DEPARTMENT, 1657 RIVERSIDE DRIVE, REDDING, CA.

CURVE TABLE			
No.	RAD	Δ	LENGTH
①	1364.59'	0° 12' 02"	4.78'
⑤	1324.60'	44° 09' 17"	1020.80'
⑦	1284.62'		51'±

STATE OF CALIFORNIA
BUSINESS, TRANSPORTATION, AND HOUSING AGENCY
DEPARTMENT OF TRANSPORTATION
DISTRICT 02
**RECORD OF SURVEY
OF MONUMENTATION**
IN SECTION 5
T. 28 N., R. 7 E., M. D. M.
IN THE COUNTY OF PLUMAS
ALONG STATE ROUTE 36
P.M. 8.9 TO P.M. 9.2
DATE 9-25-95 SHEET 3 OF 3