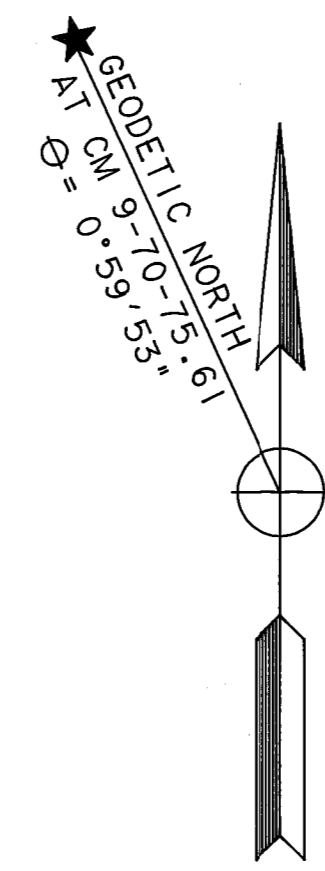
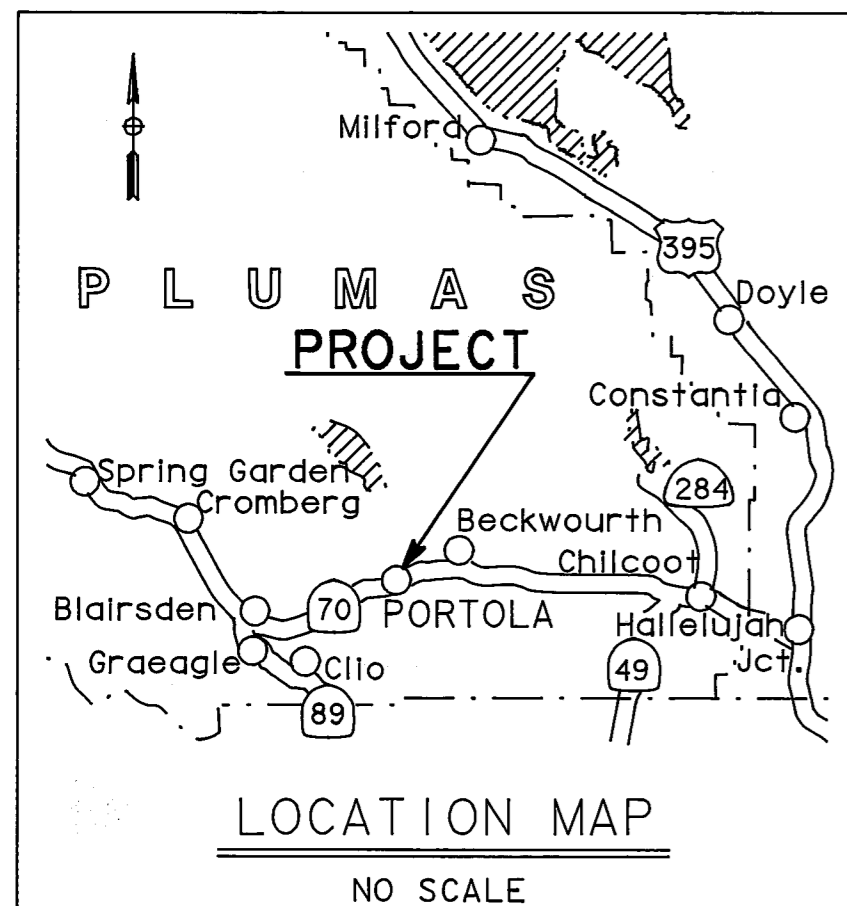


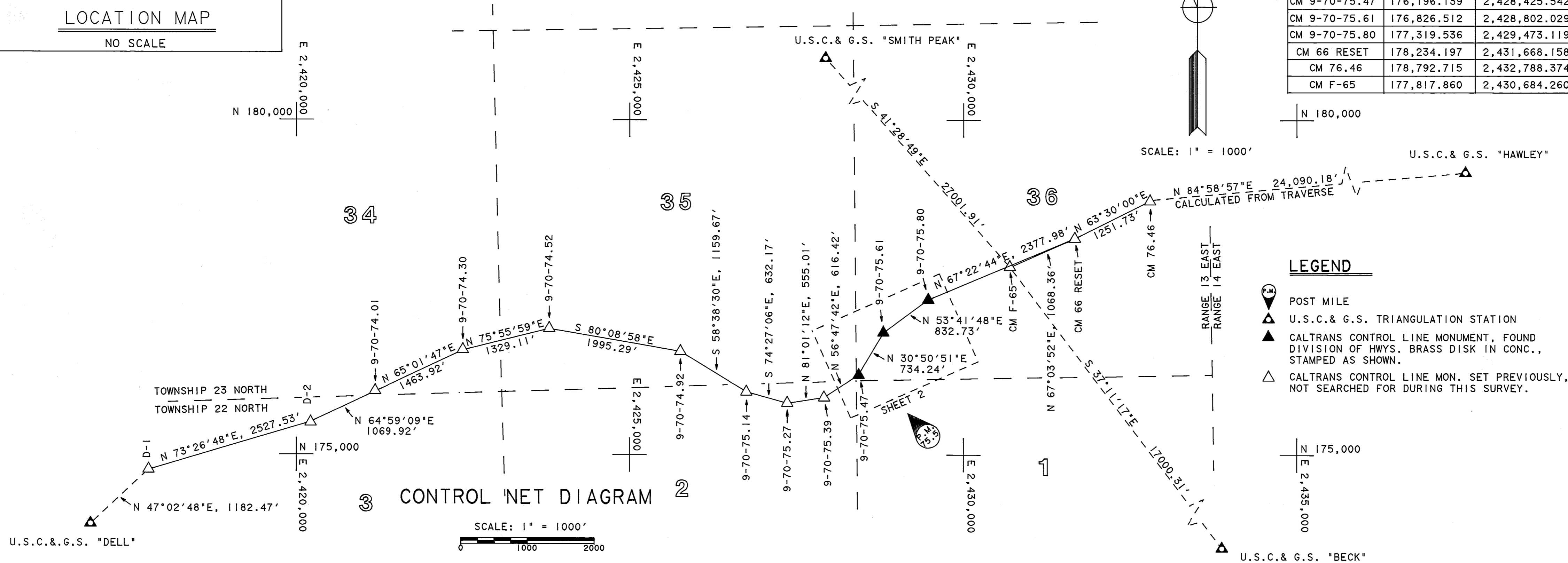
STATE OF CALIFORNIA  
 BUSINESS, TRANSPORTATION, AND HOUSING AGENCY  
 DEPARTMENT OF TRANSPORTATION  
**RECORD OF SURVEY  
 OF MONUMENTATION**  
 IN THE CITY OF PORTOLA  
 PLUMAS COUNTY, STATE OF CALIFORNIA  
 ALONG STATE HIGHWAY ROUTE 70  
 IN SECTION 36, T.23 N., R.13 E., M.D.M.

COORDINATES		
MONUMENT	NORTH	EAST
DELL 1949	173,966.93	2,416,922.25
SMITH PK. 1949	198,047.23	2,412,799.19
BECK 1949	164,274.44	2,440,959.78
HAWLEY 1949	180,899.64	2,456,786.24
CM D-1	174,772.667	2,417,787.710
CM D-2	175,492.784	2,420,210.485
CM 9-70-74.01	175,945.190	2,421,180.052
CM 9-70-74.30	176,563.179	2,422,507.136
CM 9-70-74.52	176,886.223	2,423,796.386
CM 9-70-74.92	176,544.868	2,425,762.255
CM 9-70-75.14	175,941.387	2,426,752.529
CM 9-70-75.27	175,771.932	2,427,361.565
CM 9-70-75.39	175,858.564	2,427,909.772
CM 9-70-75.47	176,196.139	2,428,425.542
CM 9-70-75.61	176,826.512	2,428,802.029
CM 9-70-75.80	177,319.536	2,429,473.119
CM 66 RESET	178,234.197	2,431,668.158
CM 76.46	178,792.715	2,432,788.374
CM F-65	177,817.860	2,430,684.260



SCALE: 1" = 1000'

U.S.C. & G.S. "HAWLEY"

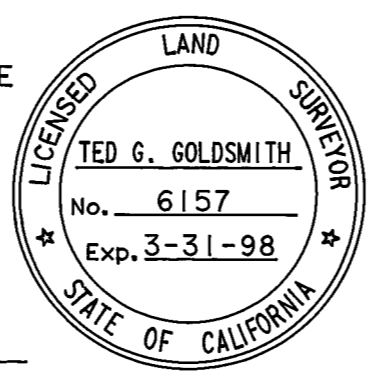


**LEGEND**

- POST MILE
- U.S.C. & G.S. TRIANGULATION STATION
- CALTRANS CONTROL LINE MONUMENT, FOUND DIVISION OF HWYS. BRASS DISK IN CONC., STAMPED AS SHOWN.
- CALTRANS CONTROL LINE MON. SET PREVIOUSLY, NOT SEARCHED FOR DURING THIS SURVEY.

**SURVEYOR'S STATEMENT**

THIS MAP CORRECTLY REPRESENTS A SURVEY MADE BY ME OR UNDER MY DIRECTION IN CONFORMANCE WITH THE REQUIREMENTS OF THE LAND SURVEYOR'S ACT AT THE REQUEST OF CALIFORNIA DEPARTMENT OF TRANSPORTATION IN MAR. 1992 AND SEPT. 1995.  
 (SIGNED AND SEALED) Ted G. Goldsmith  
 L.S. No. 6157 TED G. GOLDSMITH  
 LICENSE EXPIRATION DATE 3-31-98



**COUNTY SURVEYOR'S STATEMENT**

THIS MAP HAS BEEN EXAMINED IN ACCORDANCE WITH SECTION 8766 OF THE LAND SURVEYOR'S ACT THIS 17 DAY OF NOVEMBER, 1995.  
 (SIGNED AND SEALED) R. Tom Hunter  
 R. TOM HUNTER R.C.E. 30515  
 COUNTY SURVEYOR  
 LICENSE EXPIRES 3/31/96



**RECORDER'S STATEMENT**

FILED THIS 17 DAY OF NOVEMBER, 1995  
 AT 3:10 P.M.  
 IN BOOK 10 OF RECORD OF SURVEY AT PAGE 88-89,  
 AT THE REQUEST OF \_\_\_\_\_ COUNTY SURVEYOR  
 (SIGNED) Judith Wells COUNTY RECORDER  
 BY (SIGNED) Lori Pini DEPUTY COUNTY RECORDER  
 FEE - 0  
 FILE # 7607 SHEET 1 OF 2

EXCEPTING THOSE SHOWN OTHERWISE, ALL DISTANCES AND BEARINGS ARE GRID, BASED ON THE CALIFORNIA COORDINATE SYSTEM OF 1927, ZONE 1. TO OBTAIN GROUND LEVEL DISTANCES, MULTIPLY GRID DISTANCES BY 1.0001863.