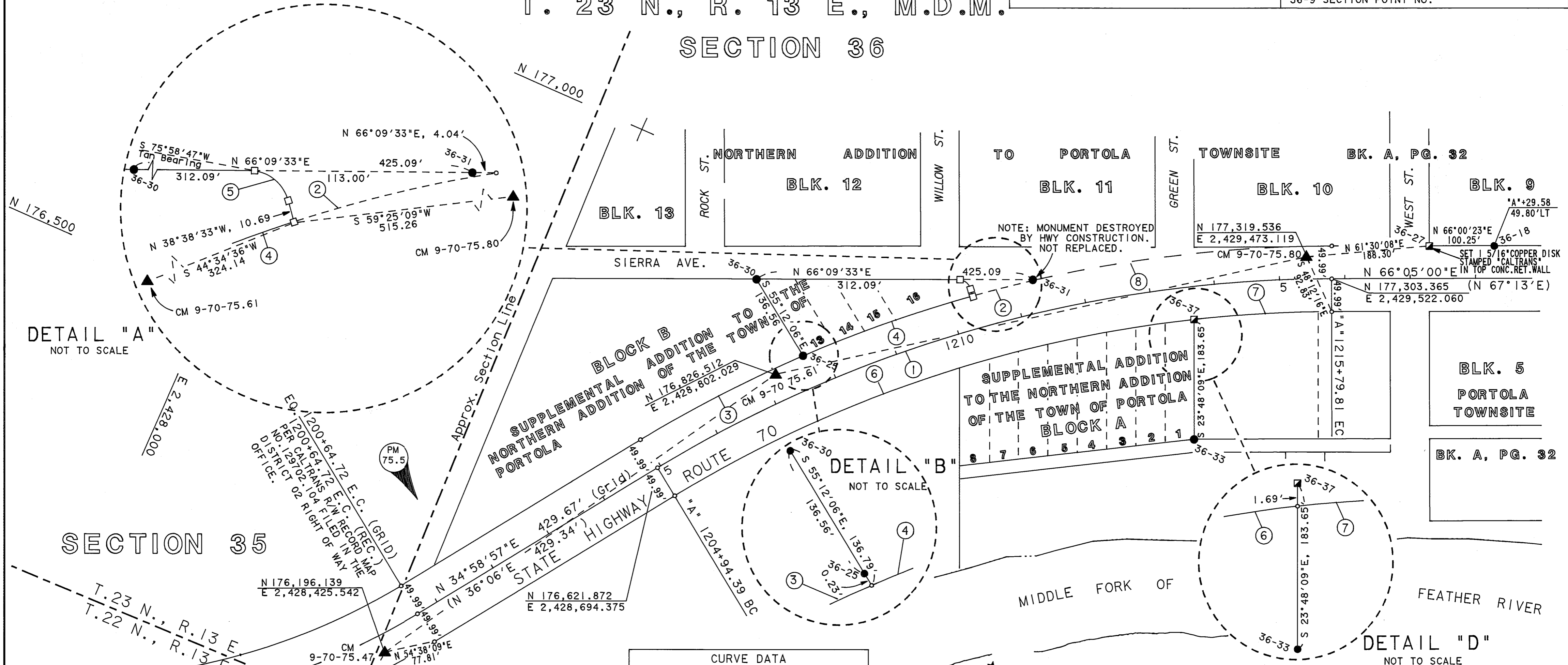


FOUND POINTS		COORDINATES		DESCRIPTION	RECORDED		
SEC	PT	NORTH	EAST		BK	OF	PG
36	18	177,450.145	2,429,730.193	1/2" REBAR & 1/2" ALUM. CAP MKD. 'LS2843'			
36	25	176,868.588	2,428,829.060	1" IRON PIPE, NO TAG			
36	27	177,409.379	2,429,638.604	1/2" REBAR & 1/2" ALUM. CAP MKD. 'LS2843'			
36	28	176,097.777	2,428,415.268	5/8" REBAR & ALUM. CAP MKD. 'LS 2843' WITH STEEL FENCE POST DRIVEN ALONG SIDE	5	RS	33
36	30	176,946.519	2,428,716.925	1/2", 3/4", & 1" IP'S SAME POSITION			
36	31	177,118.341	2,429,105.747	1/2" IRON ROD WITH HOOKED TOP			
36	33	176,995.435	2,429,427.974	REBAR & PLASTIC CAP MKD. 'LS 2843'			
36	37	177,163.464	2,429,353.856	5/8" REBAR & UNREADABLE PLASTIC CAP	3	PM	5

LEGEND	
■	FOUND R/W MONUMENT
□	SET 3/4" REBAR WITH ALUM. CAP STAMPED "CALTRANS"
○	NO MONUMENT FOUND OR SET
●	PROPERTY MONUMENT FOUND AS NOTED
■	MON. FND. AS NOTED. DESTROYED DURING CONSTRUCTION. REPLACED WITH 3/4" REBAR W/ALUM. CAP STAMPED "CALTRANS" UNLESS OTHERWISE NOTED.
( )	RECORD PER BOOK 1 OF MAPS AT PAGE 2
◆	SECTION OR FRACTIONAL CORNER, FOUND AS NOTED.
◇	SECTION OR FRACTIONAL CORNER, NOT LOCATED.
△	N.G.S. TRIANGULATION STATION
▲	CALTRANS HORIZONTAL CONTROL STATION
▲	CALTRANS CONTROL LINE MONUMENT, FOUND DIVISION OF HWYS BRASS DISK IN CONC. STAMPED AS SHOWN OR AS NOTED ON MAP.
36-9	SECTION-POINT No.

T. 23 N., R. 13 E., M.D.M.  
SECTION 36

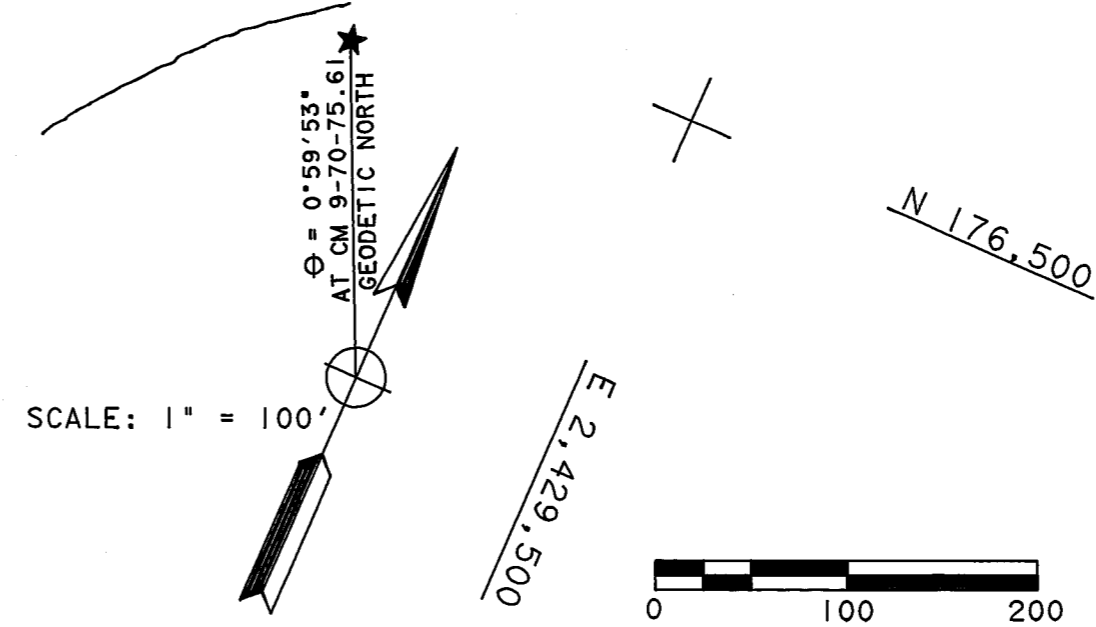


DETAIL "A" NOT TO SCALE

DETAIL "B" NOT TO SCALE

DETAIL "D" NOT TO SCALE

CURVE DATA			
No.	R	Δ	L
1	1999.63'	31°06'03"	1085.42'
2	2049.62'	2°50'15"	101.51'
3	2049.62'	7°50'01"	280.23'
4	2049.62'	7°42'10"	275.54'
5	20.00'	65°22'40"	22.82'
6	1949.64'	24°54'11"	847.39'
7	1949.64'	6°11'52"	210.89'
8	2049.62'	12°43'37"	455.27'



EXCEPTING THOSE SHOWN OTHERWISE, ALL DISTANCES AND BEARINGS ARE GRID, BASED ON THE CALIFORNIA COORDINATE SYSTEM OF 1927, ZONE 1. TO OBTAIN GROUND LEVEL DISTANCES, MULTIPLY GRID DISTANCES BY 1.0001863.

GRID WAS ESTABLISHED FROM U.S.C. & G.S. TRIANGULATION STATIONS:		
SMITH PEAK 1949	N 198,047.23	E 2,412,799.19
BECK 1949	N 164,274.44	E 2,440,959.78
HAWLEY 1949	N 180,899.64	E 2,456,786.24
DELL 1949	N 173,966.93	E 2,416,922.25

SUPPLEMENTARY INFORMATION MAY BE OBTAINED FROM THE DISTRICT OFFICE, SURVEY DEPARTMENT OR RIGHT OF WAY ENGINEERING DEPARTMENT, 1657 RIVERSIDE DRIVE, REDDING CA.

STATE OF CALIFORNIA  
BUSINESS, TRANSPORTATION, AND HOUSING AGENCY  
DEPARTMENT OF TRANSPORTATION  
DISTRICT 02  
**RECORD OF SURVEY OF MONUMENTATION**  
IN SECTION 36, T.23 N., R.13 E., M.D.M.  
CITY OF PORTOLA, PLUMAS COUNTY, CALIFORNIA  
ALONG STATE ROUTE 70, P.M. 75.5 TO P.M. 75.8  
OCTOBER 13, 1995 SHEET 2 OF 2