

SURVEYOR'S STATEMENT

THIS MAP CORRECTLY REPRESENTS A SURVEY MADE BY ME OR UNDER MY DIRECTION IN CONFORMANCE WITH THE REQUIREMENTS OF THE LAND SURVEYORS' ACT AT THE REQUEST OF MOHAWK VALLEY RANCH, INC. (PREDECESSOR OF WHITEHAWK DEVELOPMENT GROUP, LLC) IN JUNE 1995.



LARRY A. FITES, R.C.E. 13225
LICENSE EXP. DATE 3-31-97



COUNTY SURVEYOR'S STATEMENT

THIS MAP HAS BEEN EXAMINED IN ACCORDANCE WITH SECTION 8766 OF THE LAND SURVEYORS' ACT THIS 12TH DAY OF December, 1995.

R. Tom Hunter
R. TOM HUNTER, R.C.E. 30515
PLUMAS COUNTY SURVEYOR
LICENSE EXP. DATE 3-31-96

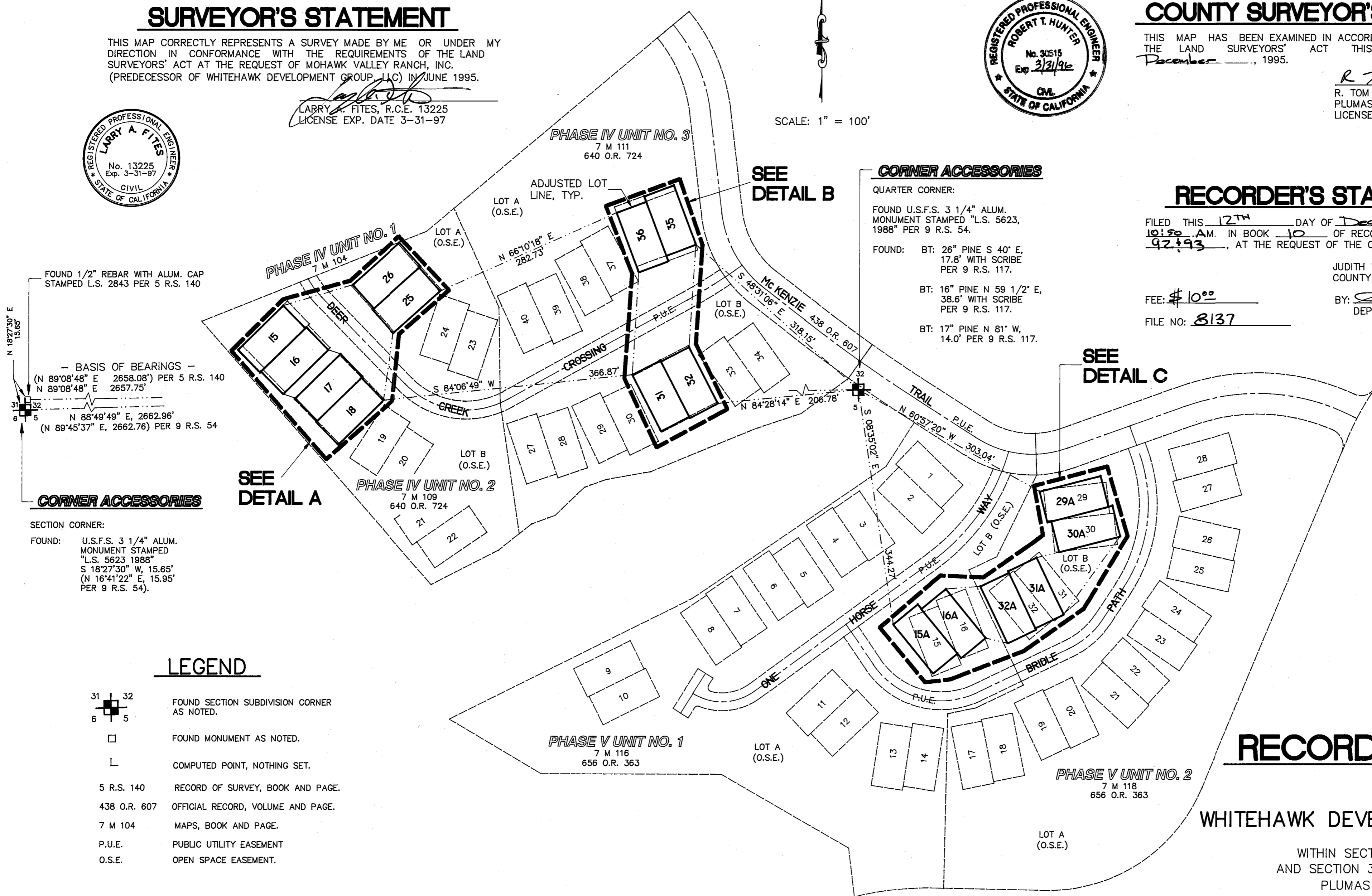
SCALE: 1" = 100'

RECORDER'S STATEMENT

FILED THIS 12TH DAY OF December, 1995, AT 10:50 A.M. IN BOOK 10 OF RECORDS OF SURVEY, AT PAGE 92 & 93, AT THE REQUEST OF THE COUNTY SURVEYOR.

FEE: \$10.00
FILE NO: 8137

JUDITH WELLS
COUNTY RECORDER
BY: *Sue A. Day*
DEPUTY



SEE DETAIL B

CORNER ACCESSORIES

QUARTER CORNER:
FOUND U.S.F.S. 3 1/4" ALUM. MONUMENT STAMPED "L.S. 5623, 1988" PER 9 R.S. 54.
FOUND: BT: 26" PINE S 40' E, 17.8' WITH SCRIBE PER 9 R.S. 117.
BT: 16" PINE N 59 1/2' E, 38.6' WITH SCRIBE PER 9 R.S. 117.
BT: 17" PINE N 81' W, 14.0' PER 9 R.S. 117.

SEE DETAIL C

CORNER ACCESSORIES

SECTION CORNER:
FOUND: U.S.F.S. 3 1/4" ALUM. MONUMENT STAMPED "L.S. 5623 1988" S 18'27'30" W, 15.65' (N 16'41'22" E, 15.95' PER 9 R.S. 54).

SEE DETAIL A

LEGEND

- FOUND SECTION SUBDIVISION CORNER AS NOTED.
- FOUND MONUMENT AS NOTED.
- COMPUTED POINT, NOTHING SET.
- 5 R.S. 140 RECORD OF SURVEY, BOOK AND PAGE.
- 438 O.R. 607 OFFICIAL RECORD, VOLUME AND PAGE.
- 7 M 104 MAPS, BOOK AND PAGE.
- P.U.E. PUBLIC UTILITY EASEMENT.
- O.S.E. OPEN SPACE EASEMENT.

1. THE BASIS OF BEARINGS FOR THIS MAP IS THE WEST HALF OF THE SOUTH SECTION LINE OF SECTION 32, T. 22 N. R. 13 E., GIVEN AS N 89° 08' 48" E IN BOOK 5 OF RECORD OF SURVEYS AT PAGE 140, PLUMAS COUNTY RECORDS.
2. THIS MAP IS BEING FILED FOR THE PURPOSE OF MONUMENTING CORNERS OF THE LOTS PER THE LOT LINE ADJUSTMENTS AS RECORDED IN BOOK 656 OF OFFICIAL RECORDS AT PAGE 363 AND BOOK 640 OF OFFICIAL RECORDS AT PAGE 724, PLUMAS COUNTY RECORDS.

RECORD OF SURVEY

FOR
WHITEHAWK DEVELOPMENT GROUP, LLC

WITHIN SECTION 5, T. 21 N., R. 13 E.
AND SECTION 32, T. 22 N., R. 13 E. M.D.M.
PLUMAS COUNTY, CALIFORNIA

PREPARED BY:
LARRY FITES ENGINEERING
P.O. BOX 20308
GRAEAGLE, CALIFORNIA 96103