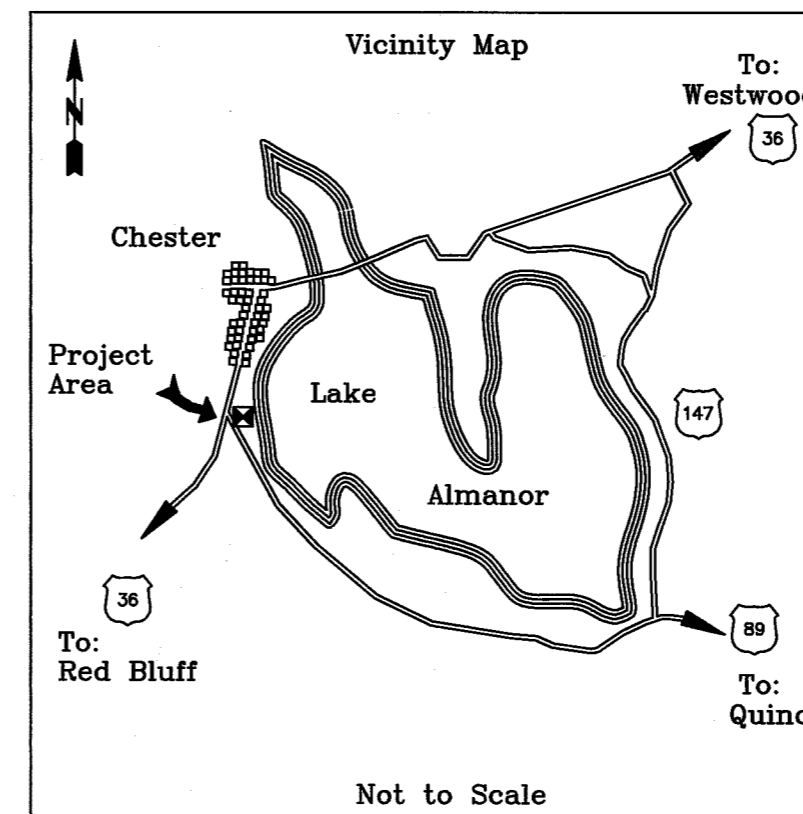


T. 28 N. R. 7 E. Section 18

Note:
 Found an Iron rod
 not of Record, marked as
 1/4 Corner. See Corner
 Notes on sheet 2 for more Information.



SURVEYOR'S STATEMENT
 This map correctly represents a survey made
 by me or under my direction in conformance
 with the requirements of the Land Surveyors
 Act at the request of the U.S.D.A. Forest
 Service in January, 1996.



John S. Rea L.S. 5176
 Expires 6-30-99

COUNTY SURVEYOR'S STATEMENT
 This map has been examined in accordance with
 Section 8766 of the Land Surveyors Act this
 2ND day of FEBRUARY 1996.

R. Tom Hunter
 R. Tom Hunter R.C.E. No. 30515
 Licence Expires 3-31-96
 Plumas County Surveyor

RECORDER'S STATEMENT
 Filed this 2ND day of FEBRUARY, 1996, at 10:30 A.M.,
 in Book 10 of Record of Surveys at Page 110 at the
 request of the County Surveyor.



Judith Wells
 Plumas County Recorder
 by *Sue A. Day*
 Deputy

Fee \$10.00

File No. 712

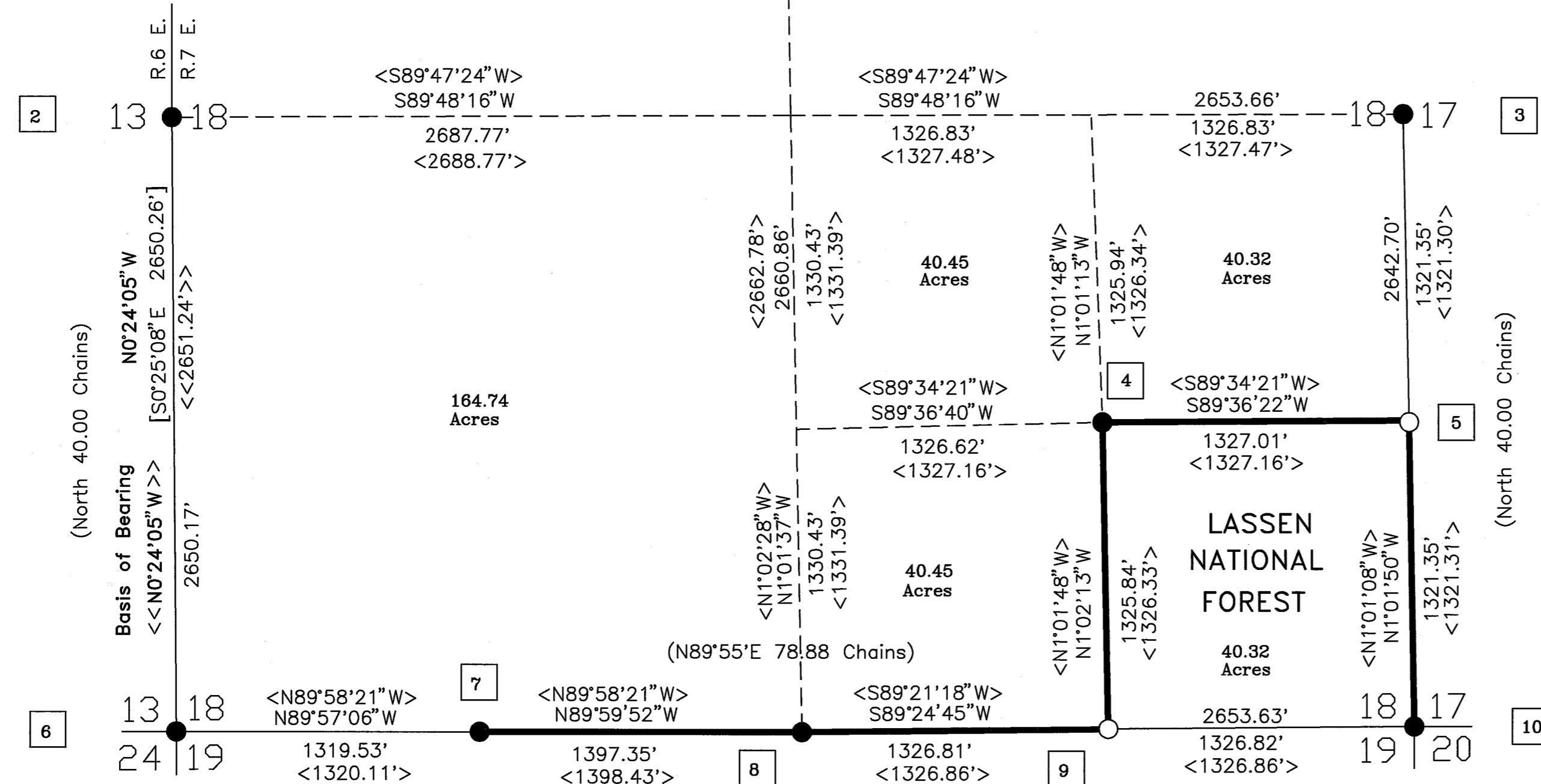
RECORD OF SURVEY
 FOR
LASSEN NATIONAL FOREST
 In Section 18
 T.28 N. R.7 E., M.D.M. in the unincorporated
 territory of Plumas County, CA.
 By
 Lassen National Forest
 55 South Sacramento Street
 Susanville, California 96130

January 1996

LEGEND

- Key to corner notes
- Found monument as described in corner notes on sheet 2.
- Set monument as described in corner notes on sheet 2.
- () Record data as per General Land Office (G.L.O.).
- Property lines marked and posted this survey.
- << >> Loren Sargent, Book 1 of Record of Surveys Page 136.
- [] Fred Nagel, Book 8 of Record of Surveys page 130.
- < > Loren Sargent, Unrecorded Survey Plat.

Basis of Bearing, N0°24'05"W
 from the South West Corner to
 West 1/4 Corner of Section 18,
 as per Book 1 R.O.S. page 136.
 Scale 1" = 500'



Survey History

1866.....Ingalls (G.L.O.), exterior Bdy. Section 18.
 1955.....Loren Sargent Land Surveyor, Subdivision of Sections
 18 and 19Unrecorded Plat.
 1957.....Loren Sargent Land Surveyor, West Bdy. of Section
 18 as per Book 1 of R.O.S. page 136.
 1964.....Loren Sargent Land Surveyor, NW corner and the North 1/4
 of Section 18 as per Book 2 of R.O.S. page 126.
 1973.....Caltrans, Corner Ties in Sections 18 and 19, as per Book
 3 R.O.S. pages 86 and 87, 4 R.O.S. pages 37,38 and 39.
 1974.....Jack Rabedew B.L.M. Corner Remonumentation.
 1990.....Fred Nagel Land Surveyor, West Bdy. Section 18 as
 per Book 8 R.O.S. page 130.