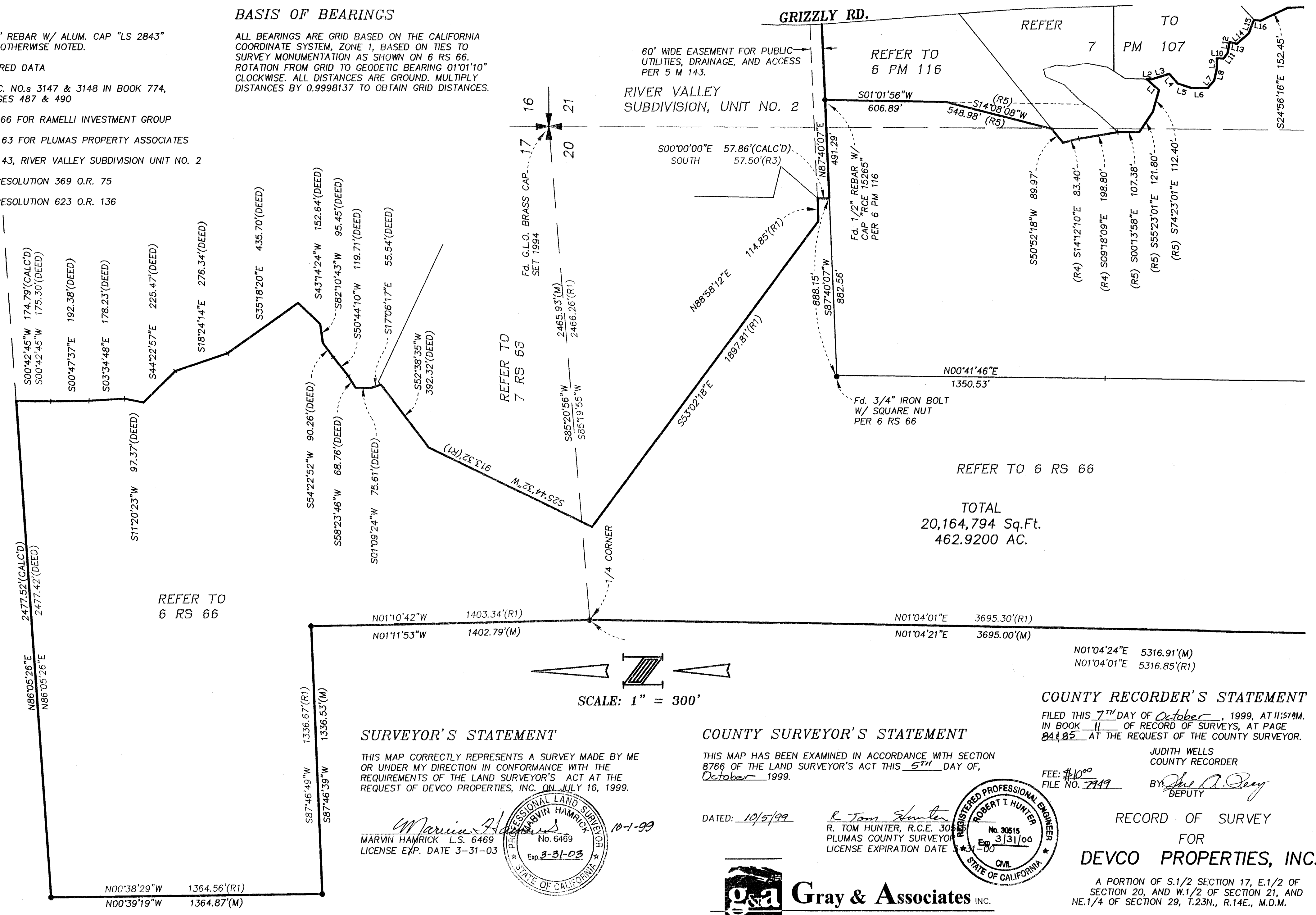


LEGEND

- Fd. 5/8" REBAR W/ ALUM. CAP "LS 2843" UNLESS OTHERWISE NOTED.
- (M) = MEASURED DATA
- (DEED) = DOC. NO.s 3147 & 3148 IN BOOK 774, PAGES 487 & 490
- (R1) = 6 RS 66 FOR RAMELLI INVESTMENT GROUP
- (R2) = 7 RS 63 FOR PLUMAS PROPERTY ASSOCIATES
- (R3) = 5 M 143, RIVER VALLEY SUBDIVISION UNIT NO. 2
- (R4) = LLA RESOLUTION 369 O.R. 75
- (R5) = LLA RESOLUTION 623 O.R. 136

BASIS OF BEARINGS

ALL BEARINGS ARE GRID BASED ON THE CALIFORNIA COORDINATE SYSTEM, ZONE 1, BASED ON TIES TO SURVEY MONUMENTATION AS SHOWN ON 6 RS 66. ROTATION FROM GRID TO GEODETIC BEARING 01'01"10" CLOCKWISE. ALL DISTANCES ARE GROUND. MULTIPLY DISTANCES BY 0.9998137 TO OBTAIN GRID DISTANCES.



REFER TO 6 RS 66

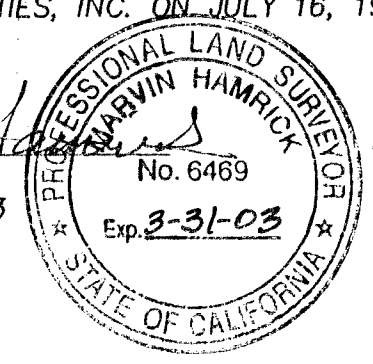
TOTAL
20,164,794 Sq.Ft.
462.9200 AC.

SCALE: 1" = 300'

SURVEYOR'S STATEMENT

THIS MAP CORRECTLY REPRESENTS A SURVEY MADE BY ME OR UNDER MY DIRECTION IN CONFORMANCE WITH THE REQUIREMENTS OF THE LAND SURVEYOR'S ACT AT THE REQUEST OF DEVCO PROPERTIES, INC. ON JULY 16, 1999.

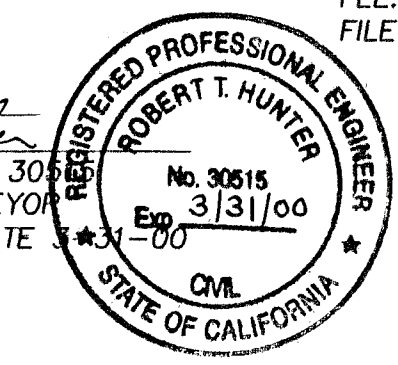
Marvin Hamrick
MARVIN HAMRICK L.S. 6469
LICENSE EXP. DATE 3-31-03



COUNTY SURVEYOR'S STATEMENT

THIS MAP HAS BEEN EXAMINED IN ACCORDANCE WITH SECTION 8766 OF THE LAND SURVEYOR'S ACT THIS 5TH DAY OF October 1999.

DATED: 10/5/99
R. Tom Hunter
R. TOM HUNTER, R.C.E. 30515
PLUMAS COUNTY SURVEYOR
LICENSE EXPIRATION DATE 3-31-00



COUNTY RECORDER'S STATEMENT

FILED THIS 7TH DAY OF October, 1999, AT 11:57 AM. IN BOOK 11 OF RECORD OF SURVEYS, AT PAGE 84 & 85 AT THE REQUEST OF THE COUNTY SURVEYOR.

JUDITH WELLS
COUNTY RECORDER
FEE: \$10.00
FILE NO. 7949
BY: *Judith Wells*
DEPUTY

RECORD OF SURVEY
FOR
DEVCO PROPERTIES, INC.

A PORTION OF S.1/2 SECTION 17, E.1/2 OF SECTION 20, AND W.1/2 OF SECTION 21, AND NE.1/4 OF SECTION 29, T.23N., R.14E., M.D.M.

PLUMAS COUNTY CALIFORNIA

g&a Gray & Associates INC.
CIVIL ENGINEERS * PLANNERS * SURVEYORS
130 Vine Street Reno, Nevada 89403
(702) 329-2911 * (702) 329-6469 Fax * grayassoc1@aol.com