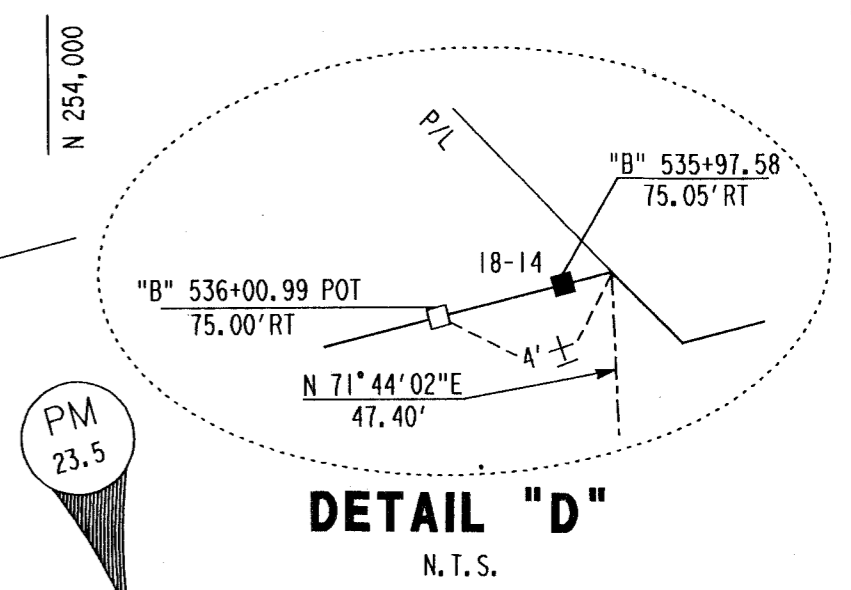
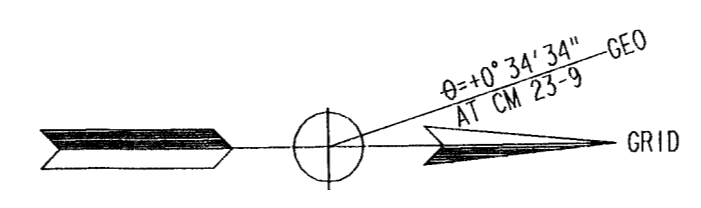


FOUND POINTS

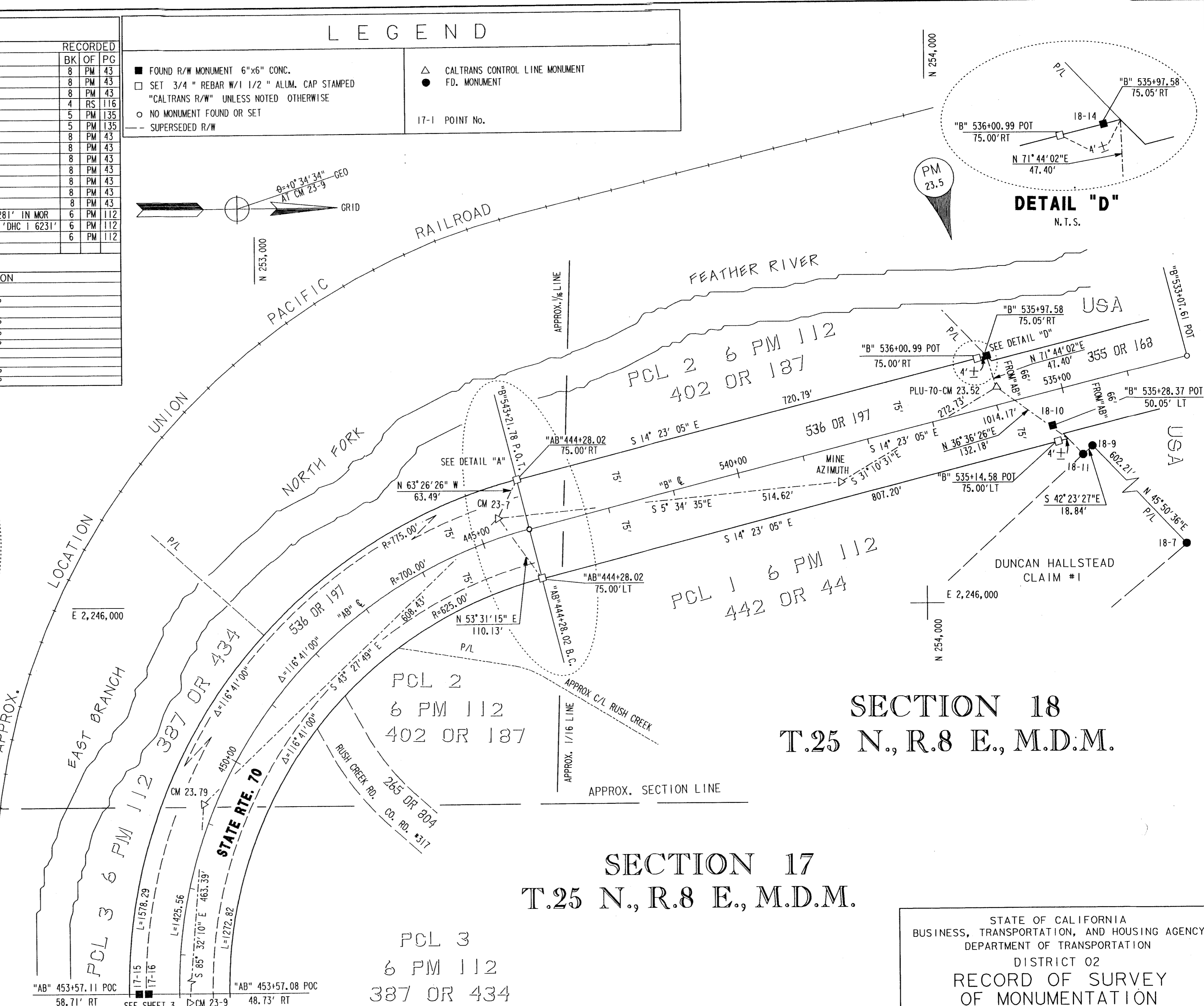
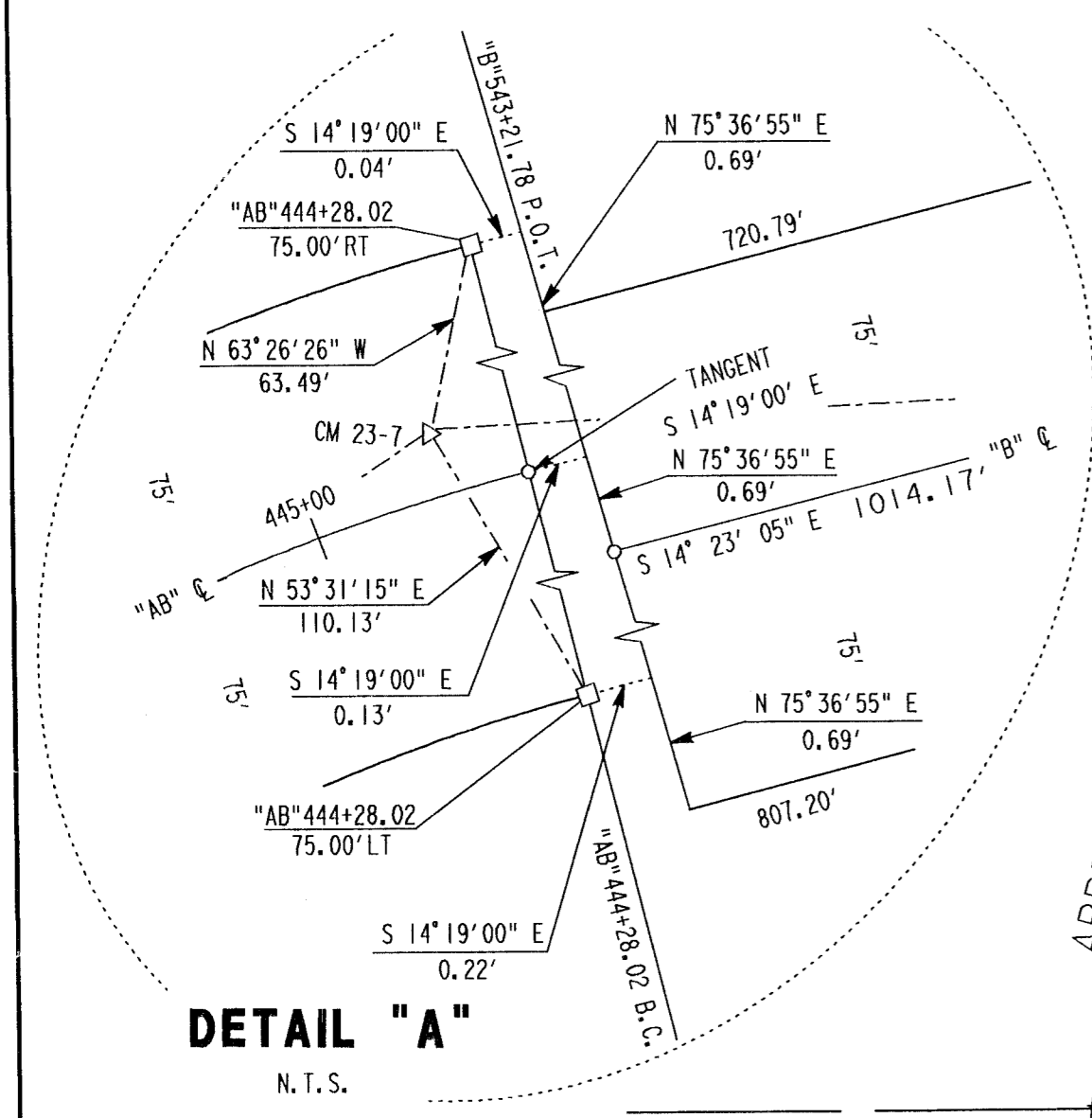
COORDINATES		DESCRIPTION		RECORDED	
SEC	PT	NORTH	EAST	BK	OF PG
17	33	253,527.678	2,248,876.676	1/2 "REBAR W/1" PLASTIC CAP RCE 22836	8 PM 43
17	34	253,339.310	2,249,748.099	1/2 "REBAR W/1" PLASTIC CAP RCE 22836	8 PM 43
17	11	252,736.886	2,249,330.453	6"X 6" CONC. R/W MONUMENT	8 PM 43
17	1	254,760.825	2,246,290.355	2-1/4 " IP IN MOR UP 3.8'	4 RS 116
17	14	253,366.006	2,248,878.682	3/4 " IP TAGED LS 3634	5 PM 135
17	2	253,326.561	2,250,164.976	3/4 " IP W/BRASS TAG LS 3634	5 PM 135
17	3	252,705.963	2,249,390.292	1/2 "REBAR W/1" PLASTIC CAP RCE 22836	8 PM 43
17	4	252,548.221	2,250,173.335	3/4 " IP W/BRASS TAG LS 3634	8 PM 43
17	7	253,470.568	2,247,594.156	1/2 " REBAR NO TAG	8 PM 43
17	8	253,472.257	2,247,592.328	1/2 " REBAR NO TAG	8 PM 43
17	9	253,381.544	2,248,183.641	1/2 " REBAR W/ PLASTIC CAP RCE 22836	8 PM 43
17	18	253,120.989	2,248,647.046	1/2 " REBAR W/ PLASTIC CAP RCE 22836	8 PM 43
17	20	253,728.891	2,247,588.938	1" IP W/ TAG LS 3634	8 PM 43
18	7	254,667.480	2,246,201.546	1-3/4 " IP W/LEAD CAP STAMPED 'DHC1 8 6281' IN MOR	6 PM 112
18	9	254,247.970	2,245,769.500	2-1/4 " CAP ON 1 3/4" O.D.I.P. STAMPED 'DHC 1 6231'	6 PM 112
18	11	254,234.054	2,245,782.203	3/4 " IP TAGED LS 3634	6 PM 112
18	14	254,090.111	2,245,635.526	6"X 6" CONC. R/W MONUMENT	6 PM 112

LEGEND

- FOUND R/W MONUMENT 6"X6" CONC.
- SET 3/4 " REBAR W/1 1/2 " ALUM. CAP STAMPED
- "CALTRANS R/W" UNLESS NOTED OTHERWISE
- NO MONUMENT FOUND OR SET
- SUPERSEDED R/W
- △ CALTRANS CONTROL LINE MONUMENT
- FD. MONUMENT
- 17-1 POINT No.



COORDINATES		DESCRIPTION	
CM	NORTH	EAST	DESCRIPTION
CM 23.52	254,105.549	2,245,680.442	3/4 " REBAR W/ 1 1/2 " ALUM. CAP
MINE AZIMUTH	253,872.205	2,245,821.622	BRASS CAP IN CONC.
CM-23-7	253,360.023	2,245,871.630	3/4 " REBAR W/ 1 1/2 " ALUM. CAP
CM 23.79	252,918.420	2,246,290.162	3/4 " REBAR W/ 1 1/2 " ALUM. CAP
CM 23-9	252,882.354	2,246,752.145	3/4 " REBAR W/ 1 1/2 " ALUM. CAP
9-70-24.10	253,445.994	2,248,074.022	2 1/4 " CDOT BRASS CAP
9-70-24.32	252,796.150	2,249,035.260	2 1/4 " CDOT BRASS CAP
CM 24.58R	252,393.400	2,250,269.502	3/4 " REBAR W/ 1 1/2 " ALUM. CAP
CM 24-6	251,944.006	2,250,812.649	3/4 " REBAR W/ 1 1/2 " ALUM. CAP



SECTION 18
T.25 N., R.8 E., M.D.M.

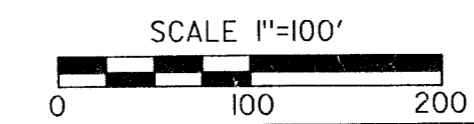
SECTION 17
T.25 N., R.8 E., M.D.M.

EXCEPTING THOSE SHOWN OTHERWISE, ALL DISTANCES AND BEARINGS ARE GRID, BASED ON THE CALIFORNIA COORDINATE SYSTEM OF 1927, ZONE 1. TO OBTAIN GROUND LEVEL DISTANCES, MULTIPLY GRID DISTANCES BY 1.0001285. GRID WAS ESTABLISHED FROM CALTRANS CONTROL LINE MONUMENTS

SUPPLEMENTARY INFORMATION MAY BE OBTAINED FROM THE DISTRICT OFFICE, SURVEY DEPARTMENT OR RIGHT OF WAY ENGINEERING DEPARTMENT, 1657 RIVERSIDE DRIVE, REDDING, CA.

N 253,000

PREPARED BY R.G.R.



STATE OF CALIFORNIA
BUSINESS, TRANSPORTATION, AND HOUSING AGENCY
DEPARTMENT OF TRANSPORTATION
DISTRICT 02
RECORD OF SURVEY
OF MONUMENTATION
IN THE UNINCORPORATED TERRITORY OF THE
COUNTY OF PLUMAS, STATE OF CALIFORNIA
ALONG STATE HIGHWAY ROUTE 70 P.M. 23.9 TO 24.6
IN THE S. 1/2 SECS. 17 & 18
T. 25 N., R. 8 E., M.D.M.
DATE NOVEMBER 15, 1999 SHEET 2 OF 4