

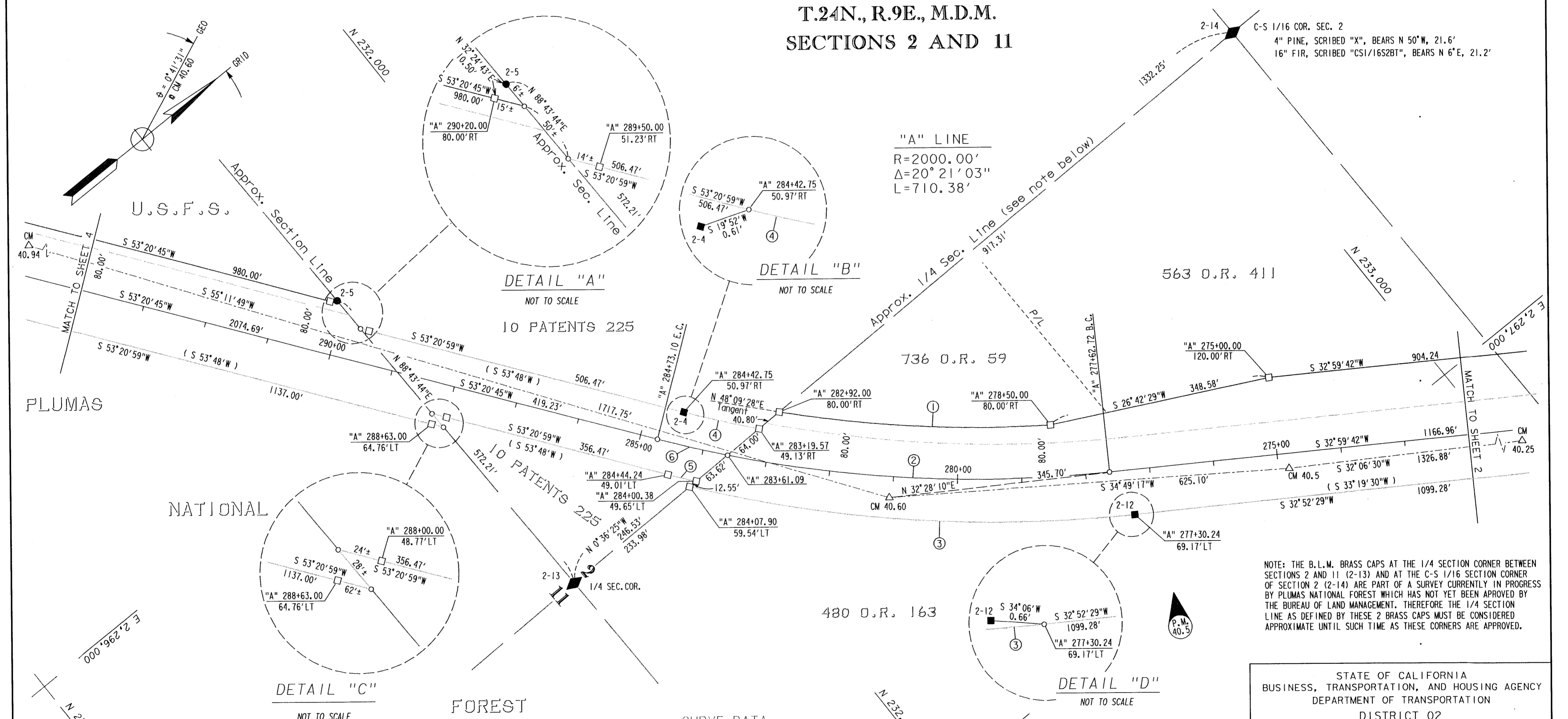
FOUND POINTS

LEGEND

COORDINATES				RECORDED			COORDINATES				RECORDED				
SEC	PT	NORTH	EAST	DESCRIPTION	BK	OF	PG	SEC	PT	NORTH	EAST	DESCRIPTION	BK	OF	PG
2	4	232,041.314	2,296,298.185	6"x 6" CONC. R/W MONUMENT											
	5	231,729.690	2,295,824.391	3" BPR BR. CAP MKD. STA. 289+03.17 EL=3549.12 1941"											
	12	232,487.572	2,296,864.035	6"x 6" CONC. R/W MONUMENT											
	13	231,742.382	2,296,396.455	3"BLM BR. CAP MKD. AS 1/4 COR. SECTIONS 2 & 11, 1989											
	14	233,074.560	2,296,382.345	3"BLM BR. CAP MKD. AS CS 1/16 COR. S.2, T24N, R9E											

■	FOUND R/W MONUMENT	◆	SECTION OR FRACTIONAL CORNER FOUND AS NOTED
□	SET 3/4" REBAR W/1 1/2" ALUM. CAP STAMPED "CALTRANS RW"	◇	SECTION OR FRACTIONAL CORNER NOT LOCATED
●	MONUMENT FOUND AS NOTED	△	CALTRANS CONTROL LINE MONUMENT SET 3/4" REBAR W/ALUM. CAP STAMPED "CALTRANS" "CM" AS NOTED
○	NO MONUMENT FOUND OR SET	▲	FOUND "CAL-TRANS" CONTROL POINT
( )	RECORD 72 DEEDS 116		

T.24N., R.9E., M.D.M.  
SECTIONS 2 AND 11



NOTE: THE B.L.M. BRASS CAPS AT THE 1/4 SECTION CORNER BETWEEN SECTIONS 2 AND 11 (2-13) AND AT THE C-S 1/16 SECTION CORNER OF SECTION 2 (2-14) ARE PART OF A SURVEY CURRENTLY IN PROGRESS BY PLUMAS NATIONAL FOREST WHICH HAS NOT YET BEEN APPROVED BY THE BUREAU OF LAND MANAGEMENT. THEREFORE THE 1/4 SECTION LINE AS DEFINED BY THESE 2 BRASS CAPS MUST BE CONSIDERED APPROXIMATE UNTIL SUCH TIME AS THESE CORNERS ARE APPROVED.

STATE OF CALIFORNIA  
BUSINESS, TRANSPORTATION, AND HOUSING AGENCY  
DEPARTMENT OF TRANSPORTATION  
DISTRICT 02  
**RECORD OF SURVEY  
OF MONUMENTATION**  
IN THE UNINCORPORATED TERRITORY OF THE  
COUNTY OF PLUMAS, STATE OF CALIFORNIA  
ALONG STATE HIGHWAY ROUTE 70, P.M. 40.0 TO 41.5  
IN SECTIONS 2, 10, & 11, T.24 N, R.9 E., M.D.M.  
DATE NOV. 15, 1999 SHEET 3 OF 5

EXCEPTING THOSE SHOWN OTHERWISE, ALL DISTANCES AND BEARINGS ARE GRID, BASED ON THE CALIFORNIA COORDINATE SYSTEM OF 1927, ZONE 1. TO OBTAIN GROUND LEVEL DISTANCES, MULTIPLY GRID DISTANCES BY 1.0001499. GRID WAS ESTABLISHED FROM U.S.C. & G.S. STA. "QUINCY" AND D.M.A. STA. "QUINCY STA 7051 ECC"

SUPPLEMENTARY INFORMATION MAY BE OBTAINED FROM THE DISTRICT OFFICE, SURVEY DEPARTMENT OR RIGHT OF WAY ENGINEERING DEPARTMENT, 1657 RIVERSIDE DRIVE, REDDING, CA.

CURVE DATA

NO	R	Δ	L
①	1920.00'	12° 39' 45"	424.32'
②	2000.00'	17° 08' 31"	598.37'
③	2059.69'	19° 25' 48"	698.48'
④	1949.71'	3° 31' 47"	120.11'
⑤	2049.69'	1° 15' 24"	44.95'
⑥	2000.00'	3° 12' 32"	112.01'

