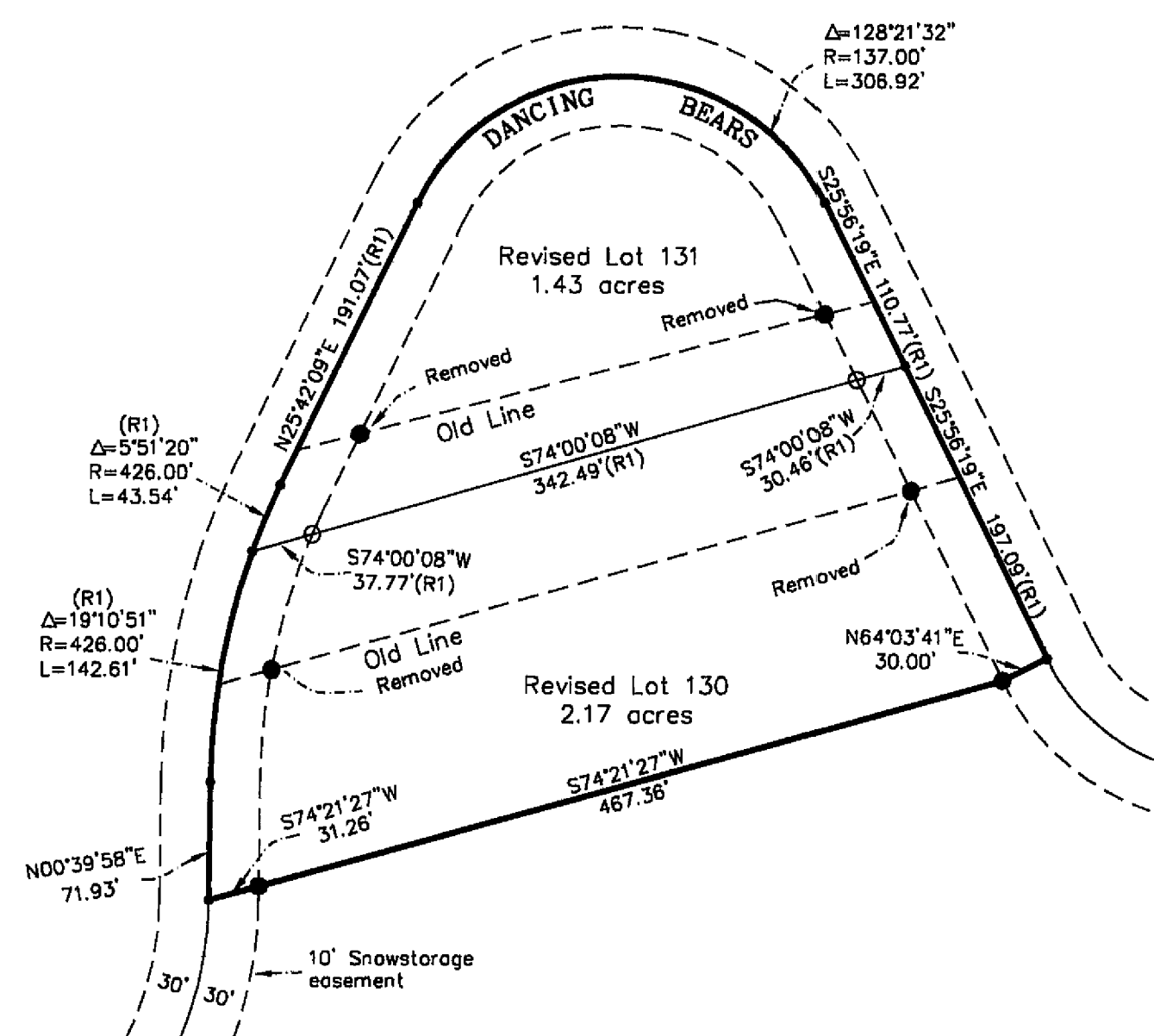


1. The Basis of Bearings of this Survey is identical to that shown in Book 8 of Maps at page 74, Plumas County records.
2. This Record of Survey was prepared to reflect a Lot Line Adjustment for which a resolution is Recorded in Book 747 of Official Records at page 99.



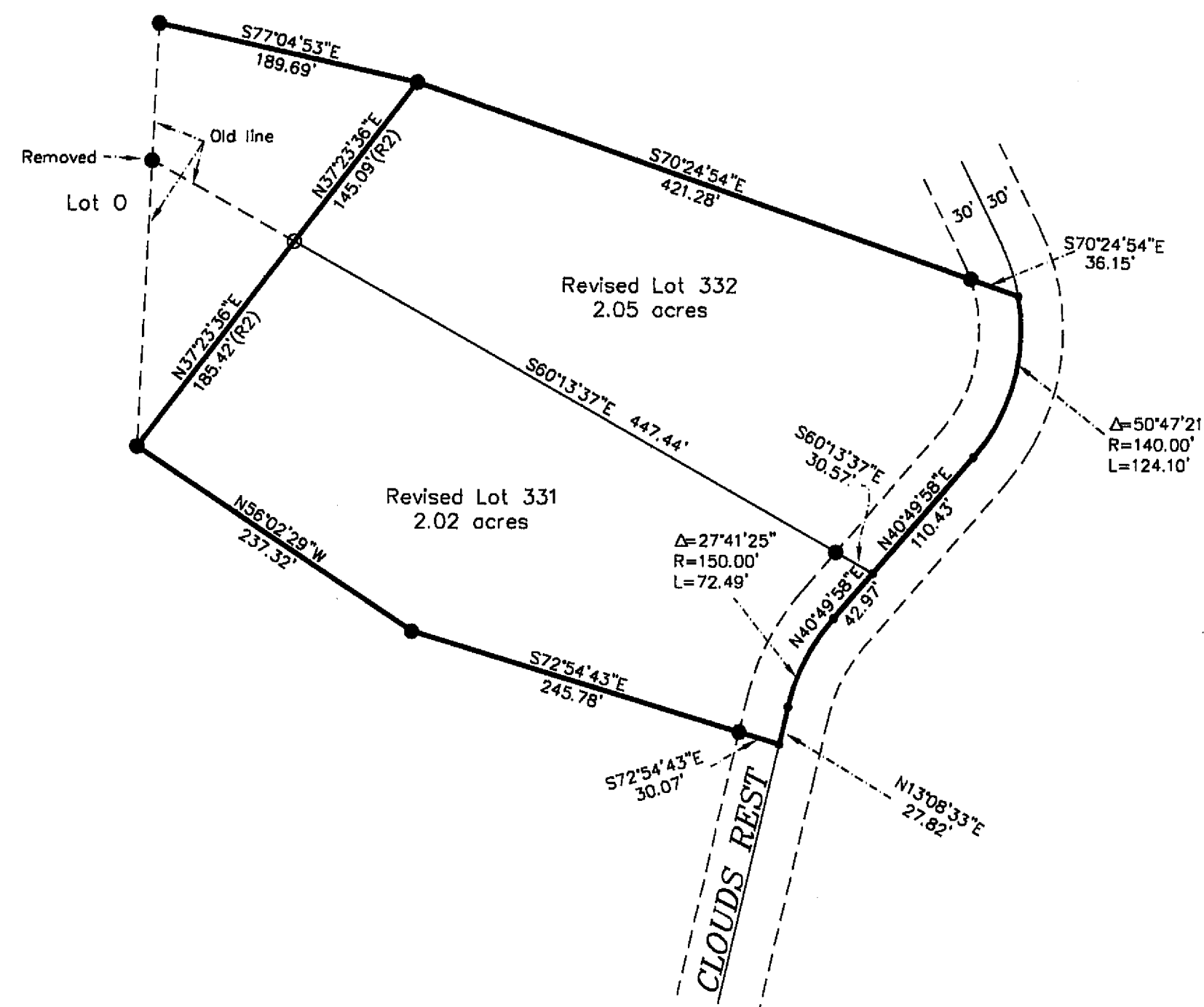
Lots 130, 131 & 133, Unit 6 "CLOUD PAINTER"  
8 M 74

Note: all bearings, distances and curve data shown are record per Gold Mountain Unit 6 "CLOUD PAINTER", 8 M 74 and Unit 14 "CLOUDS REST", 8 M 107, except those shown with (R1 & R2) which are measured per Lot Line Adjustment 747 O.R. 99, and 789 O.R. 231.

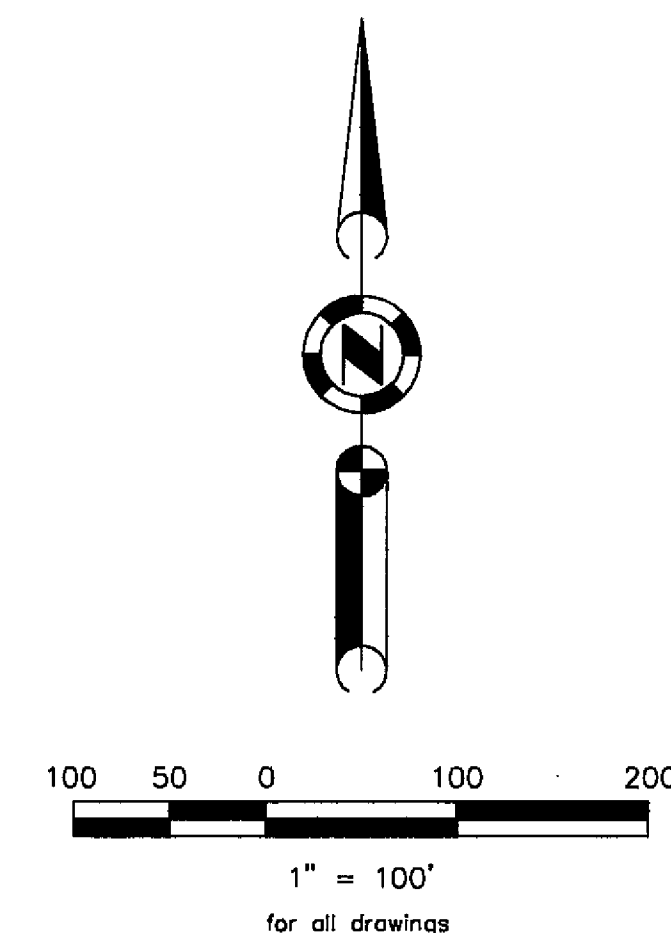
### LEGEND

- FOUND Rebar with Aluminum Cap LS 2843
  - SET 5/8" Rebar with Aluminum Cap LS 2843
  - Nothing found or set
- (R1) Record per 747 O.R. 99  
(R2) Record per 789 O.R. 231

1. The Basis of Bearings of this Survey is identical to that shown in Book 8 of Maps at page 118, Plumas County records.
2. This Record of Survey was prepared to reflect a Lot Line Adjustment for which a resolution is Recorded in Book 789 of Official Records at page 231.



Lots 331 & 332, Unit 14 "CLOUDS REST"  
8 M 118



## RECORD OF SURVEY for Gold Mountain Ranch, Inc.

Lots 130, 131 & 133  
Unit 6, "CLOUD PAINTER", 8 M 74  
and

Lots 331 and 332  
Unit 14, "CLOUDS REST", 8 M 118  
Gold Mountain Subdivision  
A portion of Sections 15 & 16  
T. 22 N., R. 13 E., M.D.M.

Plumas County, ~ California  
Scale 1" = 100' January, 2000

Hamby Surveying Inc.  
P.O. Box 1209  
Portola, CA 95122  
(530) 832-5571

SHEET 4 OF 4