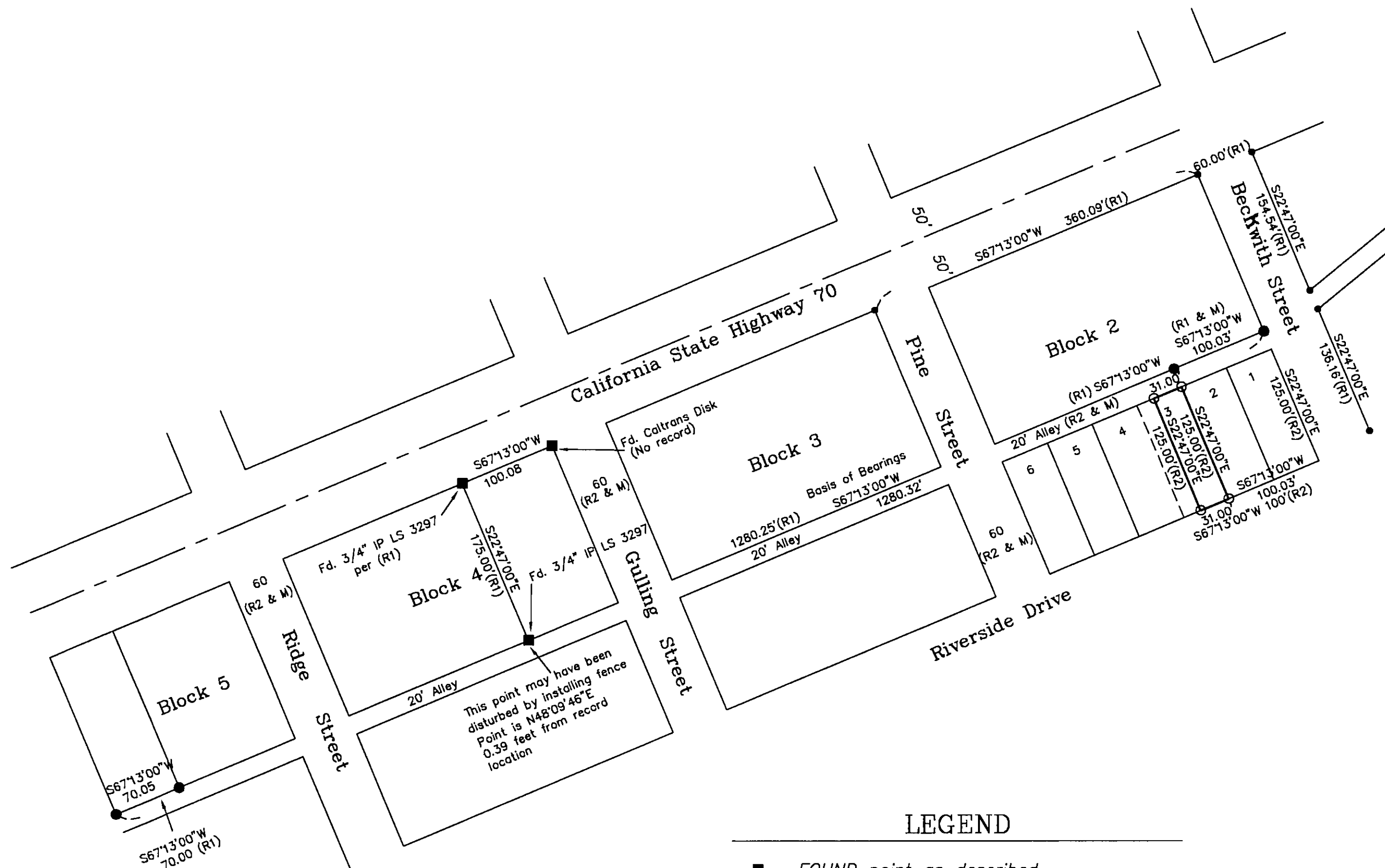
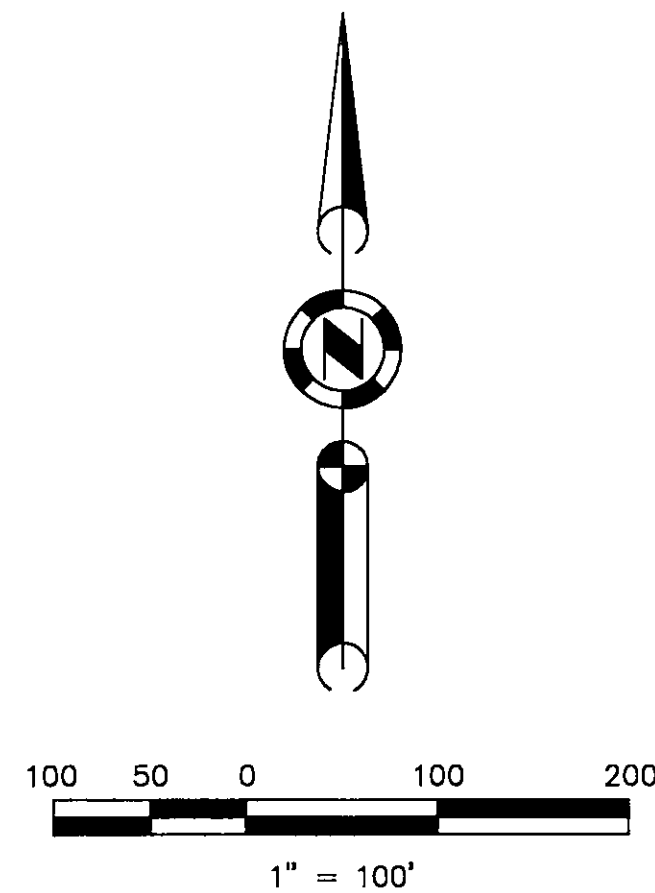


## Basis of Bearings

The Basis of Bearings for this map is the Northerly line of the Alley through Blocks 2, 3 & 5 shown as N67°13'E on 5 RS 103.

## Notes

Blocks 2, 3, 4 & 5 were established by a Record of Survey for Ernest Ross et al filed in Book 5 of Record of Surveys at page 103, Plumas County Records.

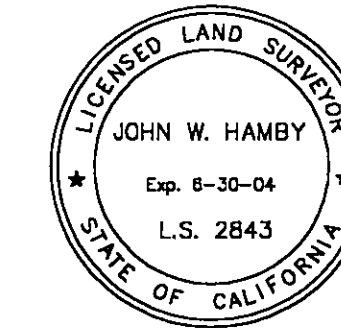


## LEGEND

- FOUND point as described
  - FOUND 5/8" Rebar with Aluminum Cap LS 2843 per 5 RS 103
  - Set 5/8" Rebar with Aluminum, Cap LS 2843
  - Nothing found or set.
- (R1) RECORD per 5 RS 103  
(R2) RECORD per A RM 34

## SURVEYOR'S STATEMENT

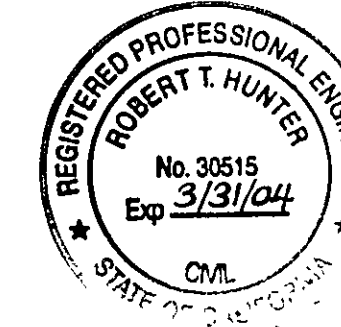
This map correctly represents a survey made by me or under my direction in conformance with the requirements of the Professional Land Surveyor's Act at the request of MIKE DIAZ in June, 2003.



*John W. Hamby*  
John W. Hamby LS 2843

## COUNTY SURVEYOR'S STATEMENT

This map has been examined in accordance with Section 8766 of the Professional Land Surveyor's Act this 15<sup>th</sup> day of August, 2003.



*R. Tom Hunter*  
R. Tom Hunter RCE 30515  
PLUMAS COUNTY SURVEYOR  
License Expiration Date 3/31/04

## RECORDER'S STATEMENT

Filed this 26<sup>th</sup> day of August, 2003 at 3:40pm. in Book 12 of Record of Surveys, at page 144, at the request of the County Surveyor.

Fee \$8.00  
File No. 2003-10038

Kathleen Williams  
County Recorder  
by *Dan Samuel*  
Deputy

# RECORD OF SURVEY for ANTHONY G. DIAZ

A portion of Lot 3, Block 2, Portola Townsite  
A portion of Section 36  
T. 23 N., R. 13 E., M.D.M.

Plumas County ~ California  
Scale 1" = 100' July, 2003

Hamby Surveying Inc.  
P.O. Box 1209  
Portola, CA 96122  
(530) 832-5571

SHEET 1 OF 1