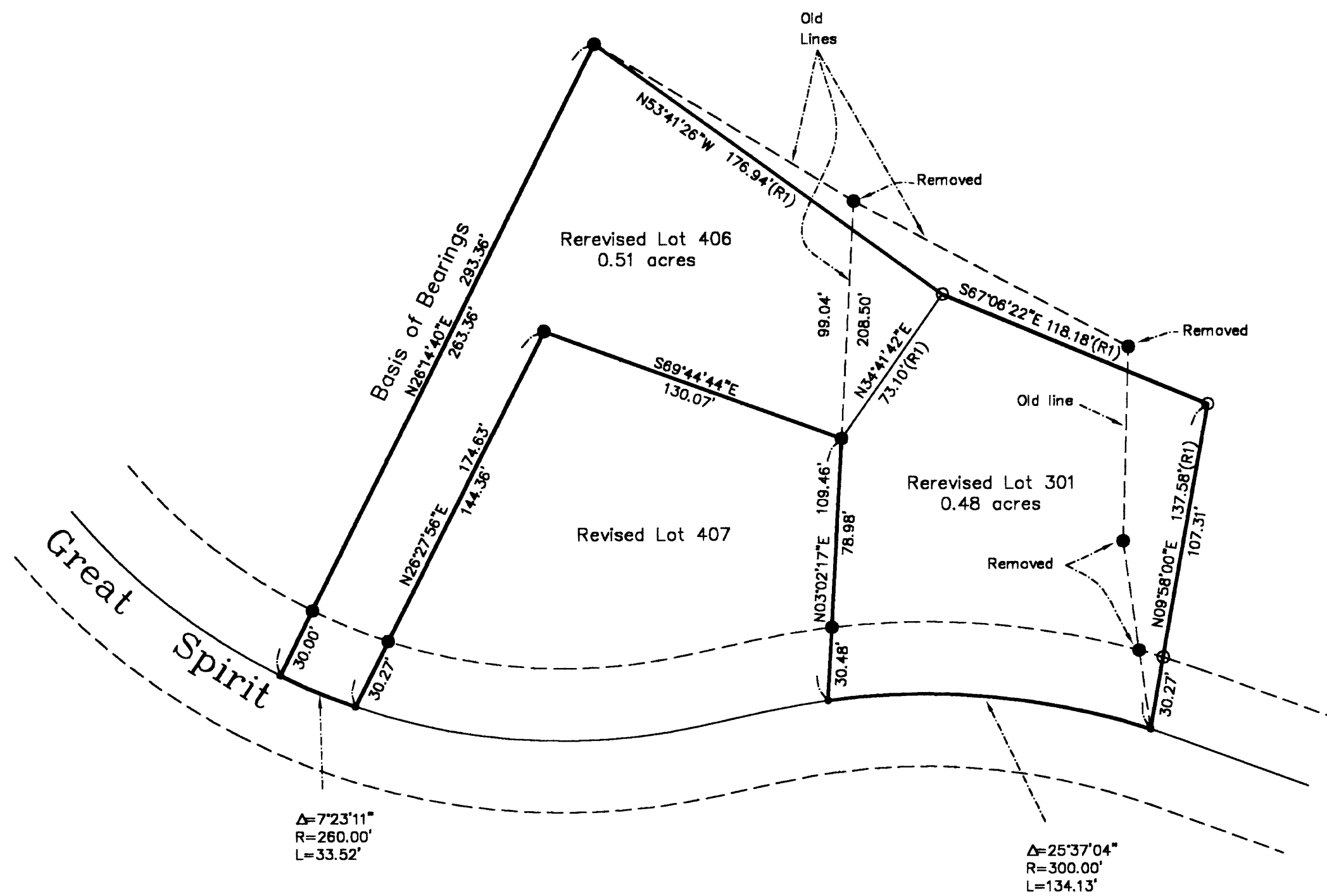


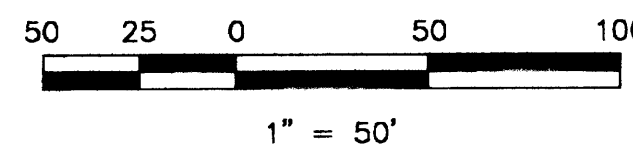
Note: all bearings, distances and curve data shown are record per Book 12 of Record of Surveys at page 3-6, except those shown with (R1) which are measured per Lot Line Adjustment Document 2001-01104.



Lots 301 & 406, Unit 16 "EAGLE FEATHER" 8 M 141

LEGEND

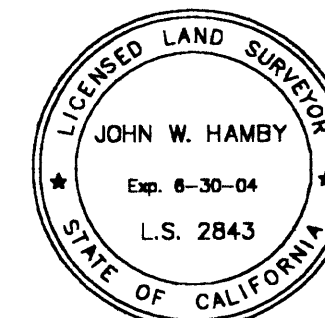
- FOUND Rebar with Aluminum Cap LS 2843
  - SET 5/8" Rebar with Aluminum Cap LS 2843
  - Nothing found or set
- (R1) Record per Document 2001-01104



The Basis of Bearings of this map is the Westerly line of Lot 406 shown as S26°14'40"W, in Book 12 of Record of Surveys at page 3-6, Plumas County records.

SURVEYOR'S STATEMENT

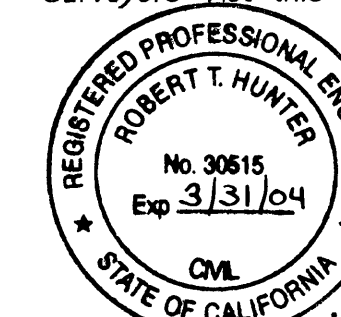
This map correctly represents a survey made by me or under my direction in conformance with the requirements of the Land Surveyors' Act at the request of Darrel Garner in November, 2000.



*John W. Hamby*  
John W. Hamby LS 2843

COUNTY SURVEYOR'S STATEMENT

This map has been examined in accordance with Section 8766 of the Land Surveyors' Act this 2<sup>nd</sup> day of March, 2001.



*R. Tom Hunter*  
R. Tom Hunter RCE 30515  
PLUMAS COUNTY SURVEYOR  
License Expiration Date 3/31/04

RECORDER'S STATEMENT

Filed this 7<sup>th</sup> day of March, 2001 at 10:44 a.m. in Book 12 of Record of Surveys, at page 7, at the request of the County Surveyor.

Fee \$8.00  
File No. 2001-01761

Judith Wells  
County Recorder  
by *Elizabeth E. Watson*  
Deputy

RECORD OF SURVEY  
for  
Gold Mountain Ranch, Inc.

A portion of Section 16  
T. 22 N., R. 13 E., M.D.M.  
Plumas County ~ California  
Scale 1" = 50' January, 2001

Hamby Surveying Inc.  
P.O. Box 1209  
Portola, CA 96122  
(530) 832-5571