

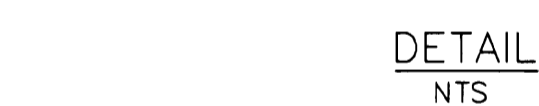
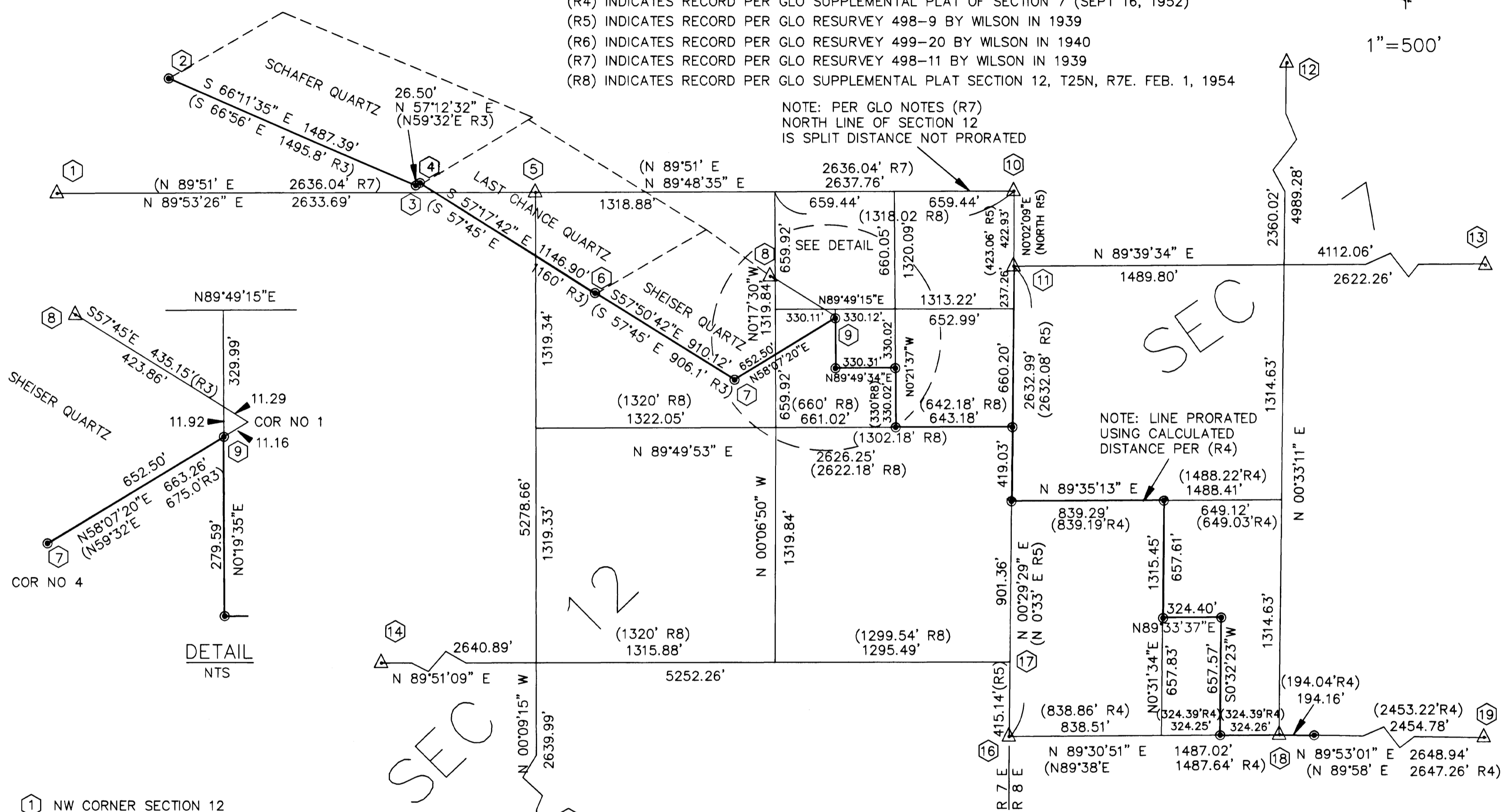
# RICH GULCH SURVEY

## LEGEND

- △ INDICATES FOUND MONUMENT AS NOTED
- INDICATES SET 5/8" REBAR WITH 3" ALUMINUM CAP STAMPED LS 6373
- INDICATES CALCULATED POINT ONLY
- (R1) INDICATES RECORD PER 9 RS 53 FILED WITH PLUMAS CO.
- (R2) INDICATES RECORD PER 9 RS 115 FILED WITH PLUMAS CO.
- (R3) INDICATES RECORD PER MINERAL SURVEY NO. 4484 FILED AUG. 13, 1908
- (R4) INDICATES RECORD PER GLO SUPPLEMENTAL PLAT OF SECTION 7 (SEPT 16, 1952)
- (R5) INDICATES RECORD PER GLO RESURVEY 498-9 BY WILSON IN 1939
- (R6) INDICATES RECORD PER GLO RESURVEY 499-20 BY WILSON IN 1940
- (R7) INDICATES RECORD PER GLO RESURVEY 498-11 BY WILSON IN 1939
- (R8) INDICATES RECORD PER GLO SUPPLEMENTAL PLAT SECTION 12, T25N, R7E. FEB. 1, 1954

## BASIS OF BEARINGS

THE BASIS OF BEARINGS FOR THIS SURVEY IS THE CALCULATED BEARING BETWEEN THE NW SECTION CORNER TO THE NE SECTION CORNER OF SECTION 12 AS SHOWN ON RECORD OF SURVEY 9 RS 53 FILED WITH PLUMAS COUNTY BEING N 89°51'00" E.



- ① NW CORNER SECTION 12 FOUND BRASS CAP STAMPED 1939 AND BT'S PER (R7)
- ② CORNER NO. 3 SCHAFFER QUARTZ FOUND BRASS CAP STAMPED SUM 2 LS 5623 AND BT'S PER (R2)
- ③ CORNER NO. 4 SCHAFFER QUARTZ FOUND BT'S PER (R3) SET 3" ALUM CAP LS 6373 BY DIST. DIST INT
- ④ CORNER NO. 3 LAST CHANCE QUARTZ FOUND BT'S PER (R3) SET 3" ALUM CAP LS 6373 BY DIST. DIST INT
- ⑤ N 1/4 SECTION 12 FOUND BT'S PER (R7) CALCULATED BY DIST. DIST INT
- ⑥ CORNER NO. 4 LAST CHANCE QUARTZ FOUND BT'S PER (R3) SET 3" ALUM CAP LS 6373 BY DIST. DIST INT
- ⑦ CORNER NO. 4 SHEISER RAVINE FOUND BT'S WITH MOS & POST PER (R3) SET 3" ALUM CAP LS 6373 IN MOS
- ⑧ CORNER NO. 1 THOMPSON PLACER MINE FOUND 3 1/4" BRASS CAP STAMPED THOM 1 LS 6051, 1991 PER (R1)
- ⑨ INTERSECTION OF LINES BETWEEN WLY LINE OF NE 1/4 OF SW 1/4 OF NE 1/4 OF SECTION 12 AND LINE BETWEEN CORNERS 1 AND 4 OF SHEISER RAVINE MINE "SEE DETAIL" SET 3" ALUM CAP LS 6373 IN MOS
- ⑩ NE CORNER SECTION 12 FOUND BRASS CAP STAMPED 1939 AND BT'S PER (R5)
- ⑪ W 1/4 CORNER SECTION 7 FOUND BRASS CAP STAMPED 1939 AND BT'S PER (R5)
- ⑫ N 1/4 CORNER SECTION 7 FOUND BRASS CAP STAMPED 1940 AND BT'S PER (R6)
- ⑬ E 1/4 CORNER SECTION 7 FOUND BRASS CAP STAMPED 1940 AND BT'S PER (R6)
- ⑭ W 1/4 CORNER SECTION 12 FOUND BRASS CAP STAMPED 1939 AND BT'S PER (R7)
- ⑮ S 1/4 CORNER SECTION 12 FOUND BRASS CAP STAMPED 1939 AND BT'S PER (R7)
- ⑯ SW CORNER SECTION 7 FOUND BRASS CAP STAMPED 1939 AND BT'S PER (R5)
- ⑰ E 1/4 CORNER SECTION 12 FOUND BT'S PER (R5) USED BT'S FOR CALCULATED POSITION
- ⑱ S 1/4 CORNER SECTION 7 FOUND BRASS CAP STAMPED 1940 AND BT'S PER (R6)
- ⑲ SE 1/4 CORNER SECTION 7 FOUND BRASS CAP STAMPED 1940 AND BT'S PER (R6)

## SURVEYOR'S STATEMENT

THIS MAP CORRECTLY REPRESENTS A SURVEY MADE BY ME OR UNDER MY DIRECTION IN CONFORMANCE WITH THE REQUIREMENTS OF THE LAND SURVEYOR'S ACT AT THE REQUEST OF JOE SMAILES DURING JULY, 2000.



*Hollis Lundy*  
HOLLIS LUNDY, L.S. 6373

## COUNTY SURVEYOR'S STATEMENT

THIS MAP HAS BEEN EXAMINED IN ACCORDANCE WITH SECTION 8766 OF THE LAND SURVEYOR'S ACT THIS 16<sup>TH</sup> DAY OF March, 2001.



*R Tom Hunter*  
R. TOM HUNTER R.C.E. 30515  
COUNTY SURVEYOR, PLUMAS COUNTY  
REG. EXPIRES 3/31/04

## RECORDER'S STATEMENT

FILED THIS 16<sup>TH</sup> DAY OF March, 2001, AT 1:46 P.M. IN BOOK 12 OF RECORD OF SURVEYS AT PAGE 8 AT THE REQUEST OF THE COUNTY SURVEYOR. FILE NO. 2001-02044 FEE: \$800

JUDITH WELLS  
COUNTY CLERK-RECORDER  
BY DEPUTY: *Samuel*

## RECORD OF SURVEY FOR JOE SMAILES

BEING IN SECTION 1 AND 12, OF T 25 N, R 7 E, AND SECTION 7 OF T 25 N, R 8 E, MDM. PLUMAS COUNTY, CALIFORNIA

00-06-058

JUNE 2000



L & L SURVEYING

1007 BILLE ROAD PO BOX 671 PARADISE, CA 95967 (916)877-4300