

**SURVEYOR'S STATEMENT**

THIS MAP CORRECTLY REPRESENTS A SURVEY MADE BY ME OR UNDER MY DIRECTION IN CONFORMANCE WITH THE REQUIREMENTS OF THE LAND SURVEYORS' ACT AT THE REQUEST OF THE US FOREST SERVICE IN JULY, 2001

SIGNED Fred W. Cook  
FRED W. COOK, L.S. 3966

**COUNTY SURVEYOR'S STATEMENT**

THIS MAP HAS BEEN EXAMINED IN ACCORDANCE WITH SECTION 8766 OF THE LAND SURVEYORS' ACT THIS 14<sup>th</sup> DAY OF December, 2001.

SIGNED R. Tom Hunter  
PLUMAS COUNTY SURVEYOR  
R. TOM HUNTER, R.C.E. 30515  
REG. EXP. 3/31/04

**COUNTY RECORDER'S STATEMENT**

FILED THIS 19<sup>th</sup> DAY OF December, 2001,  
AT 11:16 A. M., IN BOOK 12 OF RECORD OF  
SURVEYS AT PAGE 37-38, AT THE REQUEST OF  
THE PLUMAS COUNTY SURVEYOR.

PLUMAS COUNTY RECORDER  
JUDITH WELLS

BY Kaye Hancock  
DEPUTY

FEE \$10.00 DOC.# 2001-11011

**RECORD OF SURVEY**

FOR

USDA FOREST SERVICE  
PLUMAS NATIONAL FOREST

"LOWER SLATE 1"

IN SECTION 25, T 21 N, R 8 E, AND SECTION  
30, T 21 N, R 9 E, MDM  
IN THE UNINCORPORATED AREA OF  
PLUMAS COUNTY,  
STATE OF CALIFORNIA

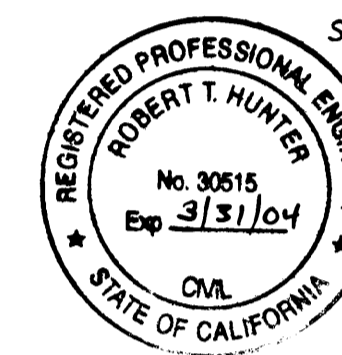
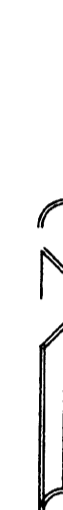
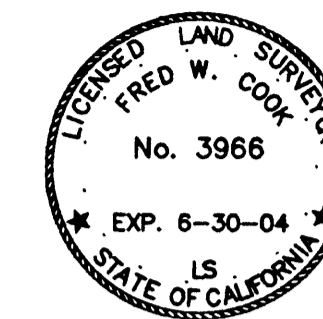
**DEL TERRA INC. SURVEYING**  
1168 INDUSTRIAL ST.  
REDDING, CA 96002  
PHONE (530) 241-8050

SCALE: 1" = 800' DATE: AUGUST, 2001  
SHEET 1 OF 2

**LEGEND**

- SET MONUMENT - SEE CORNER NOTES
- FOUND CORNER - SEE CORNER NOTES
- CALCULATED POINT
- ⊗ CORNER NUMBER
- LINES MARKED AND POSTED
- ( ) 1 RECORD PER 2 RS 81
- ( ) 2 RECORD PER GLO 1882 & 1884
- ( ) 3 RECORD PER 2 RS 83
- ( ) 4 RECORD PER 8 PM 58

CORS STATION  
QUINCY ARP  
N 2482687.38  
E 6857516.75

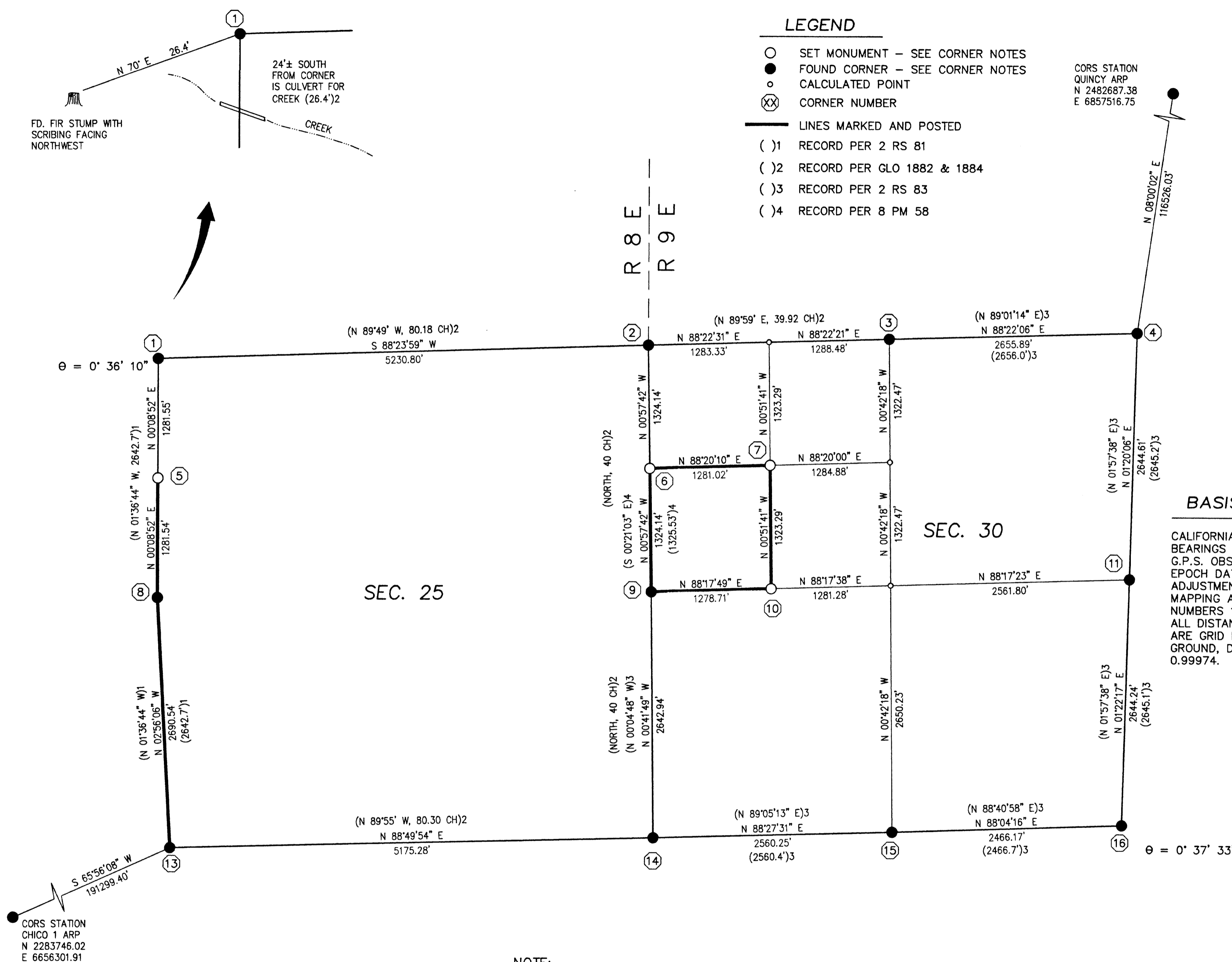


**BASIS OF BEARINGS**

CALIFORNIA ZONE 2, NAD 83 GRID  
BEARINGS DERIVED FROM FAST STATIC  
G.P.S. OBSERVATIONS.  
EPOCH DATE: 6-21-01  
ADJUSTMENT DATE: 1997.0  
MAPPING ANGLES SHOWN AT CORNER  
NUMBERS 1 AND 16.  
ALL DISTANCES SHOWN AS MEASURED  
ARE GRID DISTANCES. TO CONVERT TO  
GROUND, DIVIDE DISTANCES SHOWN BY  
0.99974.

SEC. 30

SEC. 25



**NOTE:**

ALL CALCULATIONS PERFORMED USING  
BLM'S "CMM" PROGRAM WHICH WORKS  
USING GEODETIC COORDINATES. THE  
CLOSER A LINE IS TO EAST-WEST THE  
MORE PRONOUNCED IT'S APPARENT  
CURVE, AND ON THE GRID, POINTS  
ALONG THESE CURVED LINES APPEAR AS  
ANGLE POINTS.

