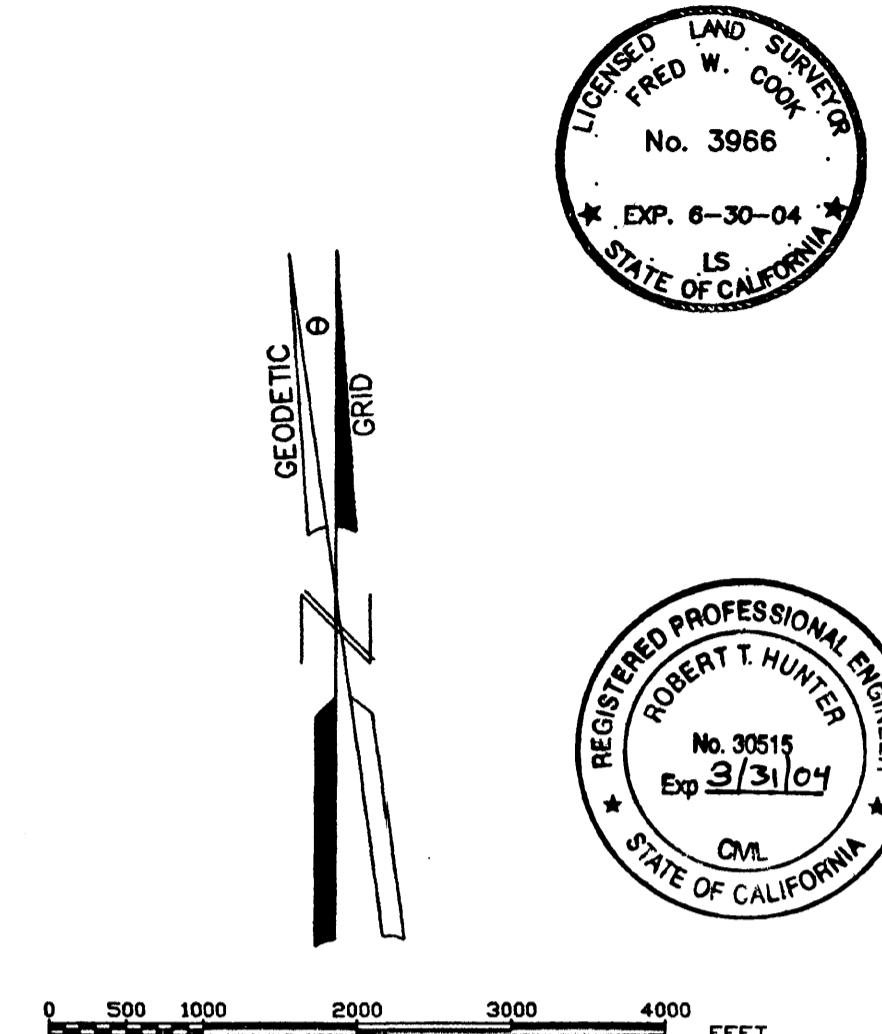
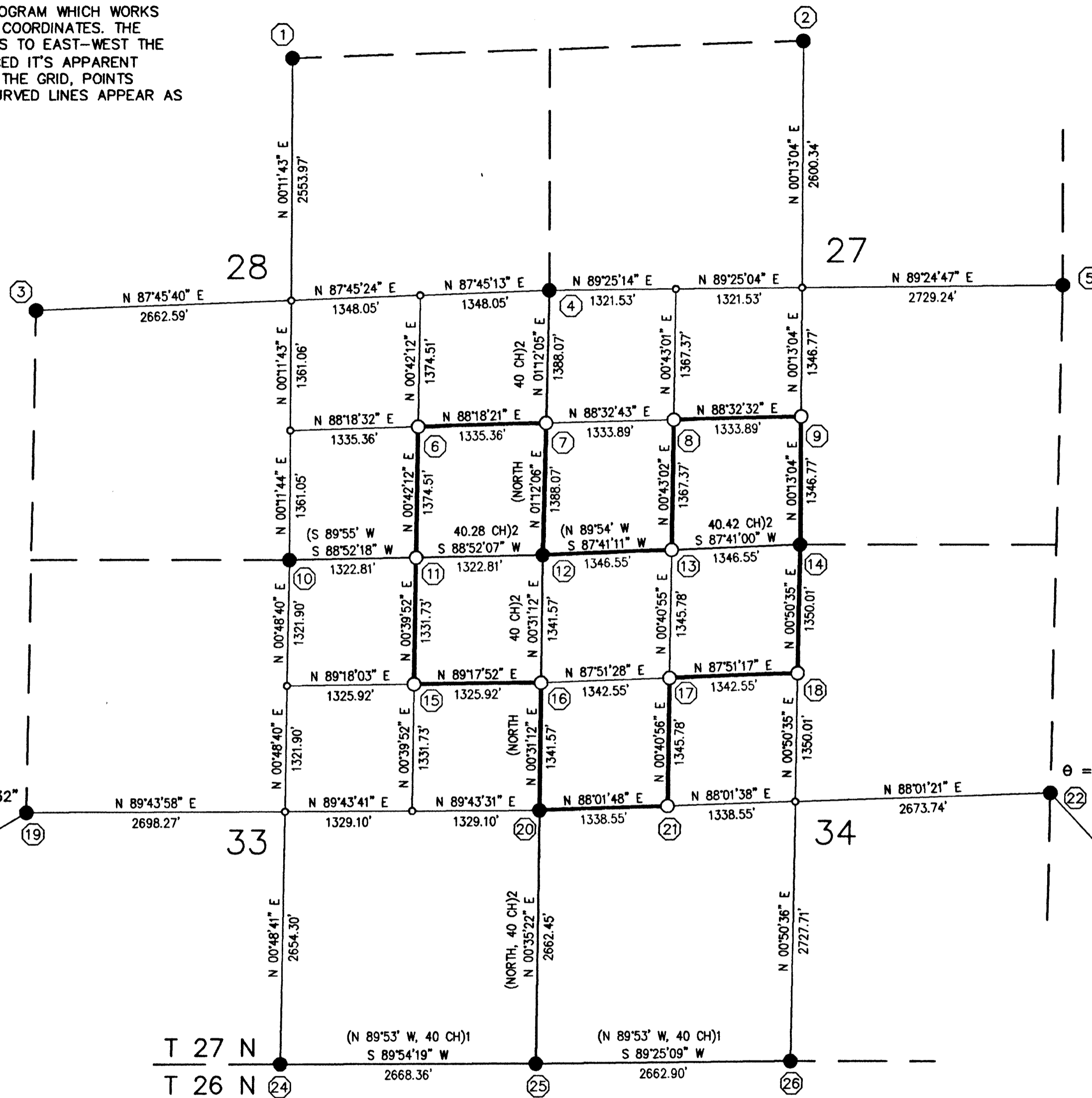
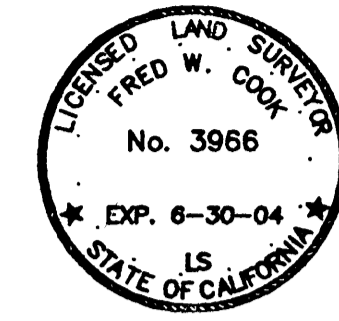


NOTE:
ALL CALCULATIONS PERFORMED USING BLM'S "CMM" PROGRAM WHICH WORKS USING GEODETIC COORDINATES. THE CLOSER A LINE IS TO EAST-WEST THE MORE PRONOUNCED IT'S APPARENT CURVE, AND ON THE GRID, POINTS ALONG THESE CURVED LINES APPEAR AS ANGLE POINTS.



BASIS OF BEARINGS
CALIFORNIA ZONE 2, NAD 83 GRID BEARINGS DERIVED FROM FAST STATIC G.P.S. OBSERVATIONS. EPOCH DATE: 1997.0 ADJUSTMENT DATE: 10-25-01 MAPPING ANGLES SHOWN AT CORNER NUMBERS 19 AND 22. ALL DISTANCES SHOWN AS MEASURED ARE GRID DISTANCES. TO CONVERT TO GROUND, DIVIDE DISTANCES SHOWN BY 0.999816.



SURVEYOR'S STATEMENT
THIS MAP CORRECTLY REPRESENTS A SURVEY MADE BY ME OR UNDER MY DIRECTION IN CONFORMANCE WITH THE REQUIREMENTS OF THE LAND SURVEYORS' ACT AT THE REQUEST OF THE US FOREST SERVICE IN SEPTEMBER, 2001

SIGNED Fred W. Cook
FRED W. COOK, L.S. 3966

COUNTY SURVEYOR'S STATEMENT
THIS MAP HAS BEEN EXAMINED IN ACCORDANCE WITH SECTION 8766 OF THE LAND SURVEYORS' ACT THIS 10th DAY OF May, 2002.

SIGNED R. Tom Hunter
PLUMAS COUNTY SURVEYOR
R. TOM HUNTER, R.C.E. 30515
REG. EXP. 3/31/04

COUNTY RECORDER'S STATEMENT
FILED THIS 13th DAY OF May, 2002, AT 4:11 P.M., IN BOOK 12 OF RECORD OF SURVEYS AT PAGE 60-61, AT THE REQUEST OF THE PLUMAS COUNTY SURVEYOR.

PLUMAS COUNTY RECORDER
JUDITH WELLS

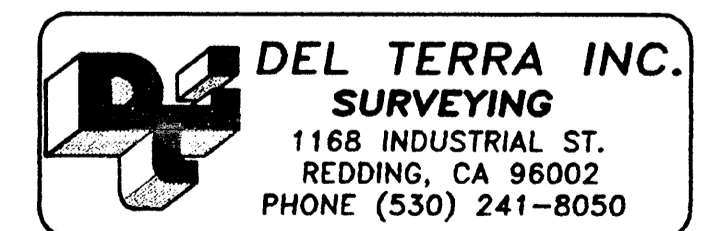
BY Judy Wells DEPUTY
FEE \$ 10⁰⁰ DOC.# 2002-4407

RECORD OF SURVEY

FOR
USDA FOREST SERVICE
PLUMAS NATIONAL FOREST

"STONY RIDGE"

IN SECTIONS 27, 28, 33 AND 34, IN T 27 N, R 13 E, M.D.M. IN THE UNINCORPORATED AREA OF PLUMAS COUNTY, STATE OF CALIFORNIA



SCALE: 1" = 1000' DATE: OCTOBER, 2001

SHEET 1 OF 2

- LEGEND**
- SET MONUMENT - SEE CORNER NOTES
 - FOUND CORNER - SEE CORNER NOTES
 - CALCULATED POINT
 - (XX) CORNER NUMBER
 - LINES MARKED AND POSTED
 - () 1 RECORD PER GLO 1874
 - () 2 RECORD PER GLO 1879

CORS STATION
QUINCY ARP
N 2482687.38
E 6857516.75

CORS STATION
STEAD ARP
N 2360775.22
E 7157735.32