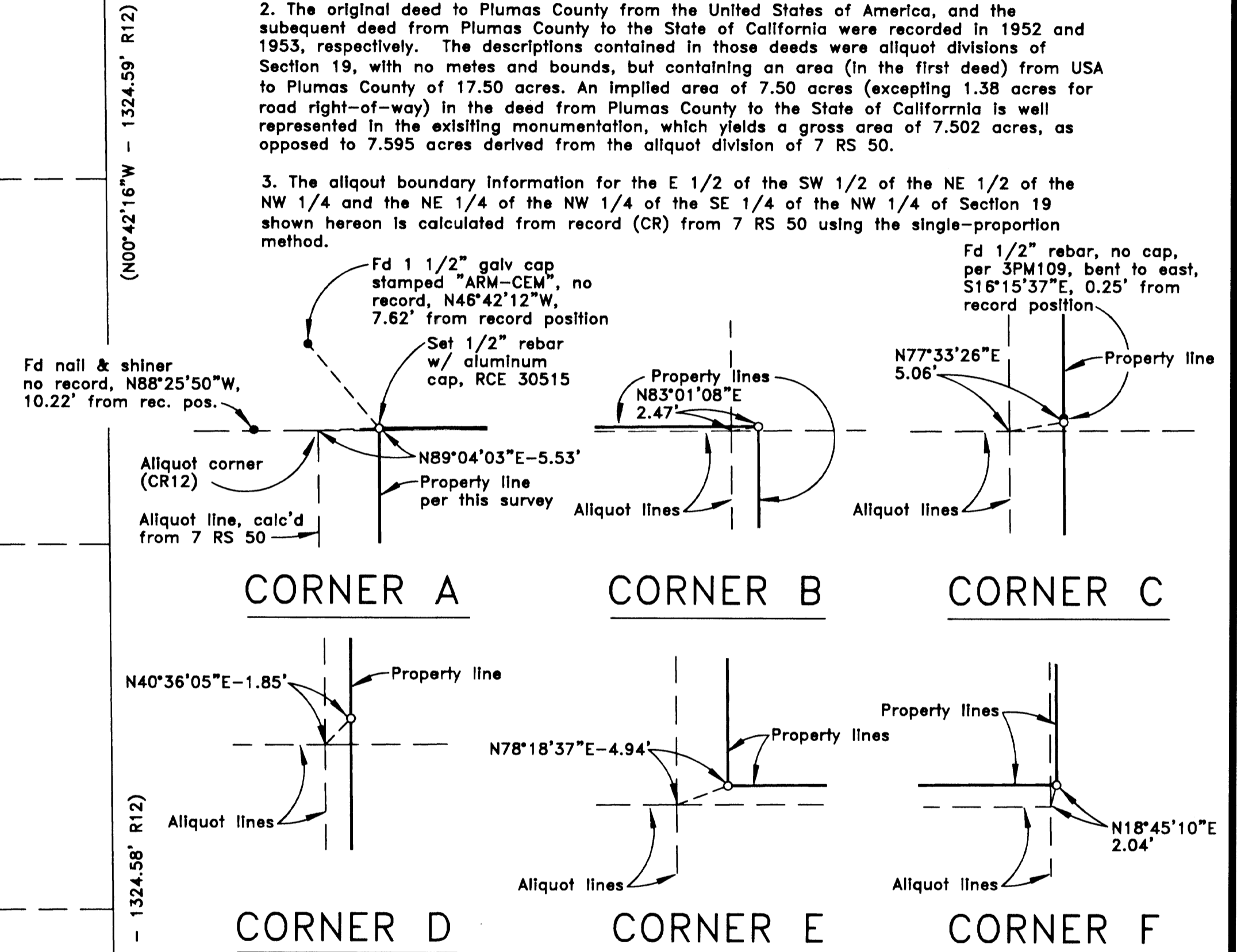


SURVEYOR'S NOTES

1. The property lines shown for the "State of California" parcel on this record of survey are intended to reflect lines of occupation and monumentation established by three parcel maps recorded in 1972: 3 PM 109, 3 PM 111 and 3 PM 120. Those maps used a sectional subdivision based upon a monument set at the center of Section 19 and other sectional subdivision points that have since been superceded by a cadastral survey which was done for the US Forest Service, recorded in Book 7 of Records of Survey at Page 50, filed in 1985. The diagrams below show the relationship of the monuments set by this survey, which are a re-establishment of the original parcel map lines, to the allquot division of Section 19 per 7 RS 50. There is a clockwise rotation of 0°35'55" between the bearings shown on the parcel maps and 7 RS 50.

2. The original deed to Plumas County from the United States of America, and the subsequent deed from Plumas County to the State of California were recorded in 1952 and 1953, respectively. The descriptions contained in those deeds were allquot divisions of Section 19, with no metes and bounds, but containing an area (in the first deed) from USA to Plumas County of 17.50 acres. An implied area of 7.50 acres (excepting 1.38 acres for road right-of-way) in the deed from Plumas County to the State of California is well represented in the existing monumentation, which yields a gross area of 7.502 acres, as opposed to 7.595 acres derived from the allquot division of 7 RS 50.

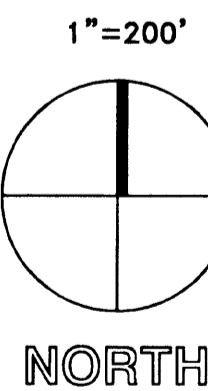
3. The allquot boundary information for the E 1/2 of the SW 1/2 of the NE 1/2 of the NW 1/4 and the NE 1/4 of the NW 1/4 of the SE 1/4 of the NW 1/4 of Section 19 shown hereon is calculated from record (CR) from 7 RS 50 using the single-proportion method.



RECORD OF SURVEY
for
PLUMAS COUNTY

A portion of the NW 1/4 of Section 19
T. 24 N., R. 10 E., M.D.M.
Plumas County, California
Scale 1" = 200' February, 2002

Plumas County Department of Public Works
1834 East Main St.
Quincy, CA. 95971
(530) 283-6268



13 18
24 19

(N89°32'55"E - 1329.59' R12)

NW 1/4
NW 1/4

NE 1/4

NW 1/4

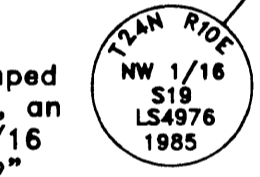
NW 1/4

SE 1/4

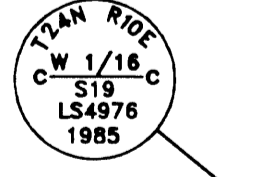
SW 1/4
NW 1/4

NW 1/4

Fd. 3 1/2" Aluminum Cap, stamped as shown per 7 RS 50 w/2 BTs, an 8" WF w/K-Tag marked "CW 1/16 S19 BT, S49E, 13.1FT" and a 12" DF w/blaze, no K-Tag, bearing S 41°W, 31.1 FT.



Fd. 3 1/2" Aluminum Cap, stamped as shown per 7 RS 50 w/2 BTs, a 7" Black Oak w/K-Tag marked "NW 1/16 S19, N89°E, 25.3'" and an 18" DF w/ blaze, no K-tag bearing S04°W, 33.8 FT. Also Fd. 1/2" rebar w/ plastic cap marked RCE 11173 per 3 PM 111, bearing N65°12'E, 9.31 FT.



Fd. 1/2" rebar (R1 & R2) w/brass tag, RCE 13528 N70°55'13"W-12.08' from 3/4" iron pipe (no tag) Center of Section 19 per 3 PM 109

Fd. 3/4" Iron pipe, no tag (R12) Center of Section 19 per 8 RS 132

(N00°28'15"W - 1320.96' R12)

(N00°28'15"W - 1320.95' R12)

(N00°42'16"W - 1324.59' R12)

(N00°42'16"W - 1324.58' R12)

(N89°37'35"E-333.08' CR12)

(N88°53'06"E-330.00')

(S01°11'13"E-989.89' (S0°16'E-990.17' R13) 659.94'

(N00°31'46"W-660.93' CR12)

(N01°11'11"W-660.35'

(N00°35'16"W-661.38' CR12)

(N89°42'15"E 1335.00' R12)

(333.75' R12)

(667.50' R12)

(N00°31'39"W 329.95' (N00°31'39"W 330.47' CR12)

(N00°35'09"W 330.15' (N00°35'09"W 330.69' CR12)

(N01°16'W-330' R13)

(N88°59'26"E-330.00')

(N89°44'33"E-334.09' CR12)

(N89°53'E-330.00' R13)

(334.43' R12)

(334.43' R12)

(668.85' R12)

(N89°46'52"E - 1337.70' R12)

(N89°51'29"E - 1340.40' R12)