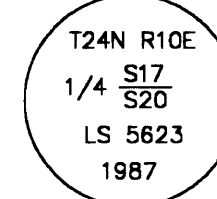


**Basis of Bearings**

The Basis of Bearings of this map is the calculated bearing of S30°14'35"W, from the North 1/4 corner of Section 20 and point 9 as shown on 4 RS 119, sheet 8 of 8. Coordinates are California Coordinate System Zone 1, Nad 27.

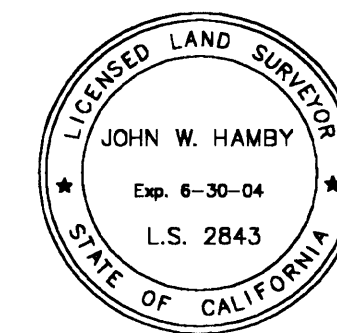
Bearing Trees with Bearing Tree Tags  
Blazed 17" Fir N44°13'E, 5.5'  
Blazed 13" Pine S08°09'E, 16.2'  
Found Standard U.S.F.S Aluminum Cap stamped as shown



Record Coordinates (R1)  
N. 221,548.320  
E. 2,312,420.695

**SURVEYOR'S STATEMENT**

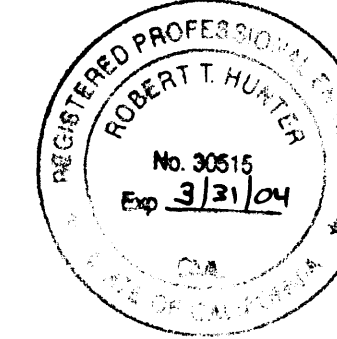
This map correctly represents a survey made by me or under my direction in conformance with the requirements of the Land Surveyors' Act at the request of Plumas Rural Electric Cooperative in May, 2002.



*John W. Hamby*  
John W. Hamby LS 2843

**COUNTY SURVEYOR'S STATEMENT**

This map has been examined in accordance with Section 8766 of the Land Surveyors' Act this 15<sup>th</sup> day of October, 2002.



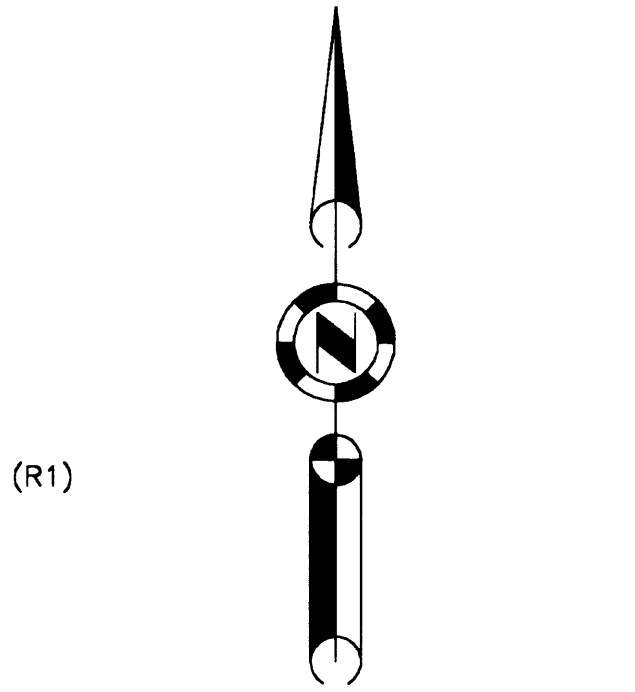
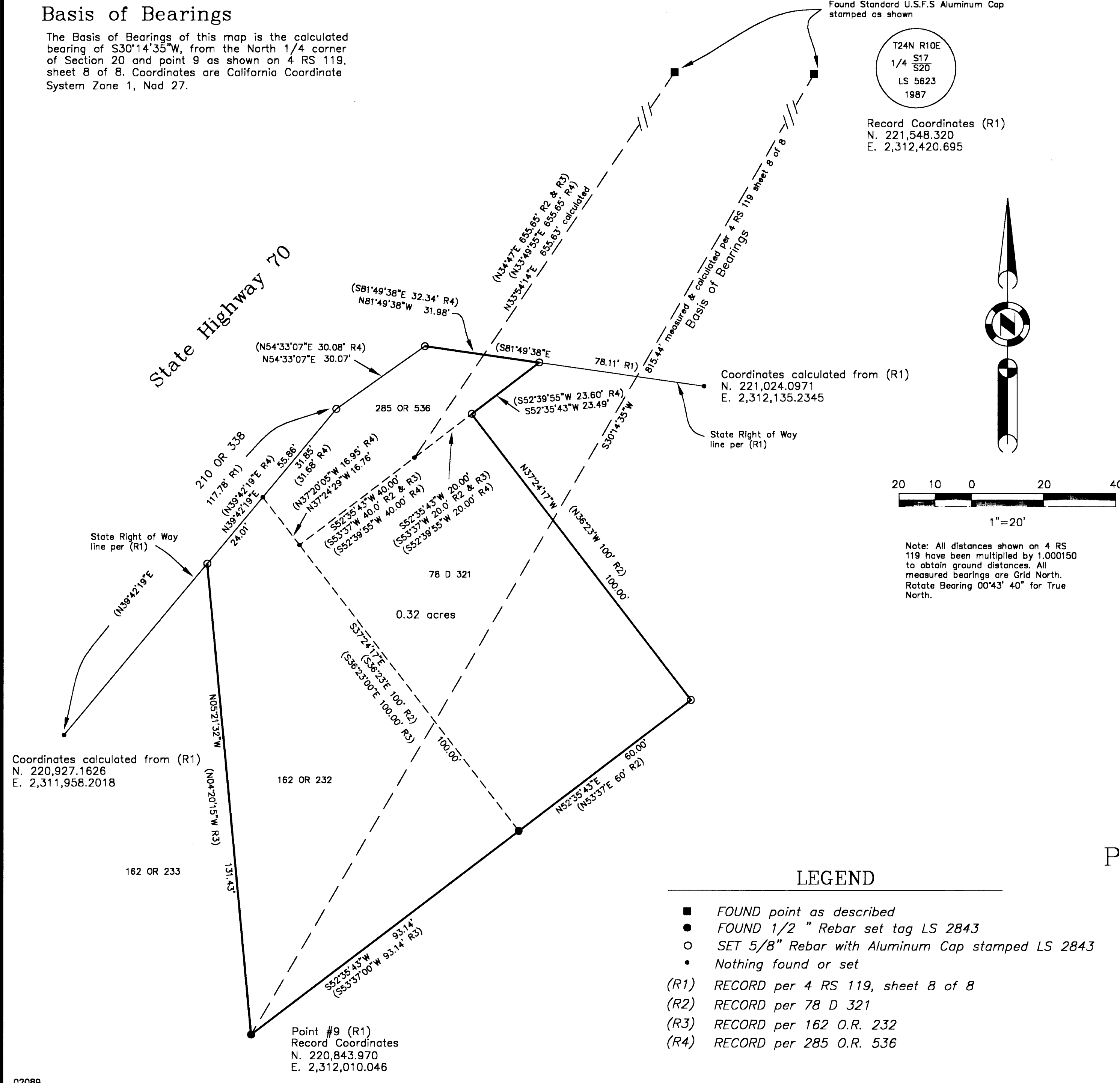
*R. Tom Hunter*  
R. Tom Hunter RCE 30515  
PLUMAS COUNTY SURVEYOR  
License Expiration Date 3/31/04

**RECORDER'S STATEMENT**

Filed this 16<sup>th</sup> day of October, 2002 at 3:35pm in Book 12 of Record of Surveys, at page 84, at the request of the County Surveyor.

Fee \$ 8.00  
File No. 2002-0010446

Judith Wells  
County Recorder  
by *Judy Samuel*  
Deputy



1" = 20'

Note: All distances shown on 4 RS 119 have been multiplied by 1.000150 to obtain ground distances. All measured bearings are Grid North. Rotate Bearing 00°43' 40" for True North.

**LEGEND**

- FOUND point as described
- FOUND 1/2 " Rebar set tag LS 2843
- SET 5/8" Rebar with Aluminum Cap stamped LS 2843
- Nothing found or set
- (R1) RECORD per 4 RS 119, sheet 8 of 8
- (R2) RECORD per 78 D 321
- (R3) RECORD per 162 O.R. 232
- (R4) RECORD per 285 O.R. 536

**RECORD OF SURVEY for Plumas Sierra Rural Electric Cooperative**

A portion of the NW 1/4 of Section 20  
T. 24 N., R. 10 E., M.D.M.  
Plumas County ~ California  
Scale 1" = 20' June, 2002

Hamby Surveying Inc.  
P.O. Box 1209  
Portola, CA 96122  
(530) 832-5571