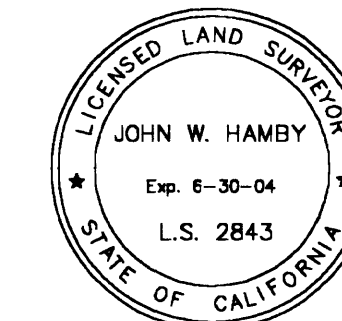


SURVEYOR'S STATEMENT

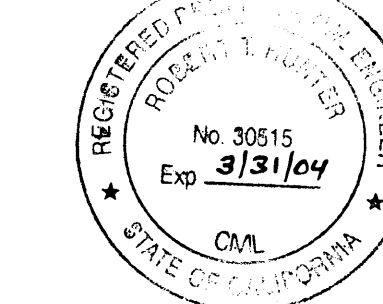
This map correctly represents a survey made by me or under my direction in conformance with the requirements of the Land Surveyors' Act at the request of Robin Hamlin in May, 2002.



John W. Hamby
John W. Hamby LS 2843

COUNTY SURVEYOR'S STATEMENT

This map has been examined in accordance with Section 8766 of the Land Surveyors' Act this 6th day of December, 2002.



R. Tom Hunter
R. Tom Hunter RCE 30515
PLUMAS COUNTY SURVEYOR
License Expiration Date 3/31/04

RECORDER'S STATEMENT

Filed this 12th day of December, 2002 at 2:04P.m. in Book 12 of Record of Surveys, at page 94, at the request of the County Surveyor.

Fee \$ 8.00
File No. 2002-12528

Judith Wells
County Recorder
by *Deborah A. Jensen*
Deputy

**RECORD OF SURVEY
for
Robin Hamelin**

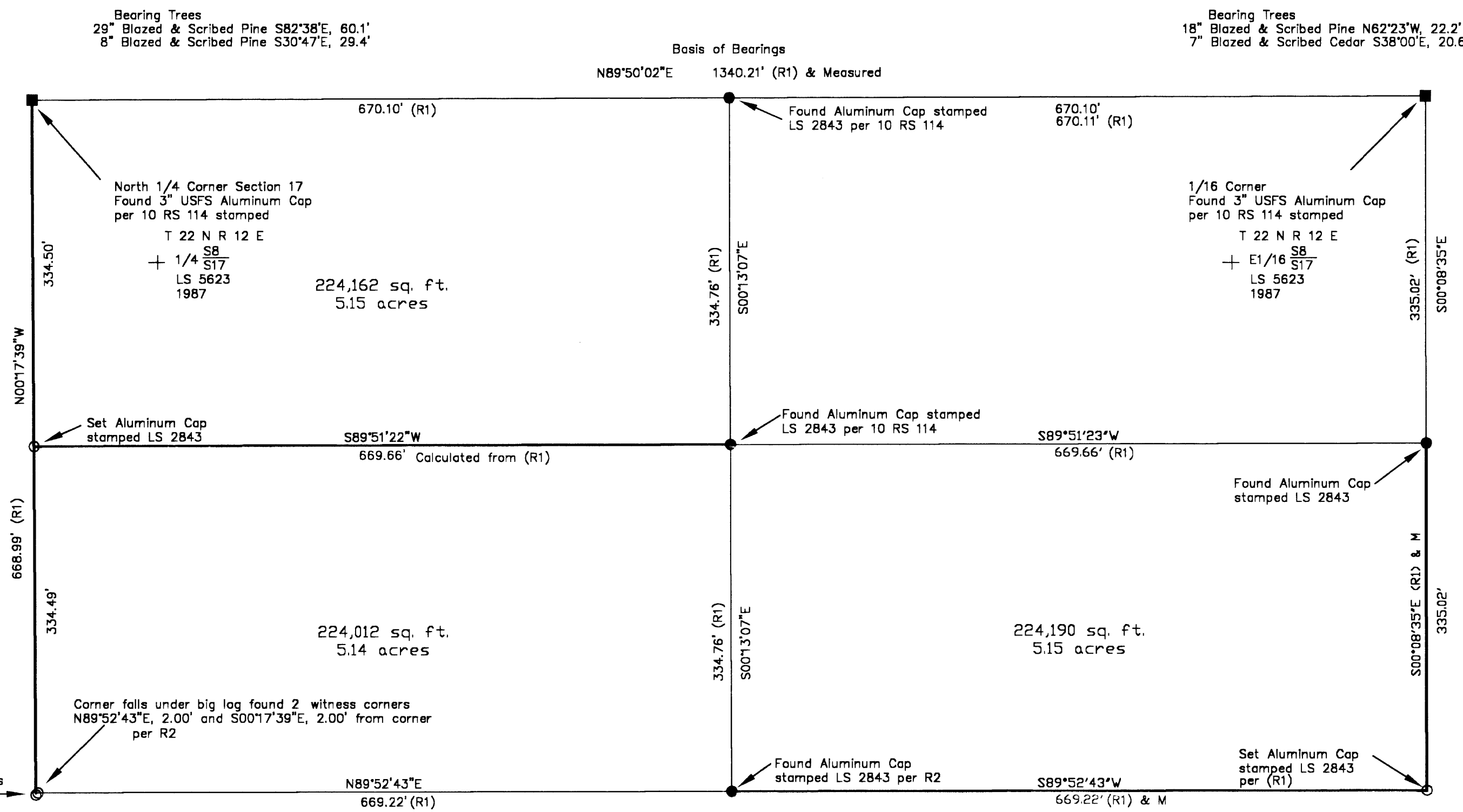
A portion of the N 1/2 of the NW 1/4 of the NE 1/4 of Section 17 T. 22 N., R. 12 E., M.D.M.

Plumas County ~ California
Scale 1" = 100' May, 2002

Hamby Surveying Inc.
P.O. Box 1209
Portola, CA 96122
(530) 832-5571

SHEET 1 OF 1

12 RS 94



Basis of Bearings

The Basis of Bearings for this Survey is the Northeast Line of Section 8, per 10 RS 114.

LEGEND

- FOUND point as described
- FOUND 5/8" Rebar with Aluminum Cap LS 2843
- SET 5/8" Rebar with Aluminum Cap LS 2843
- (R1) RECORD per 10 RS 114
- (R2) RECORD per Corner Record Document Number 178 Official Records Plumas County, California.
- M Measured

