

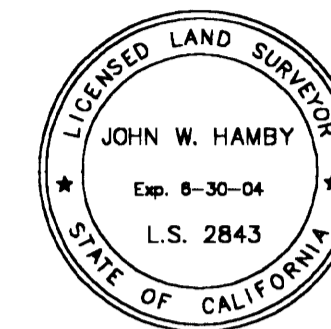
Basis of Bearings

The Basis of Bearings of this map is the North line of the Northwest 1/4 of Section 25 shown as S88°36'51"E in Book 9 of Record of Surveys at page 126, Plumas County records.

This Record of Survey was prepared to reflect a Lot Line Adjustment for which a resolution is recorded as document 2002-5444, Plumas County Records.

SURVEYOR'S STATEMENT

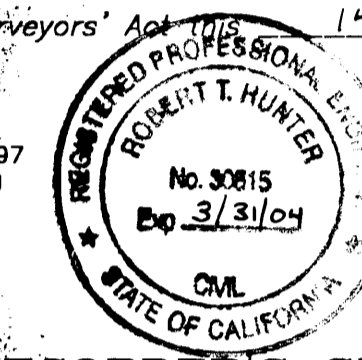
This map correctly represents a survey made by me or under my direction in conformance with the requirements of the Land Surveyors' Act at the request of Bruce Hamill in May, 2002.



John W. Hamby
John W. Hamby LS 2843

COUNTY SURVEYOR'S STATEMENT

This map has been examined in accordance with Section 8766 of the Land Surveyors' Act on the 14th day of January, 2003.



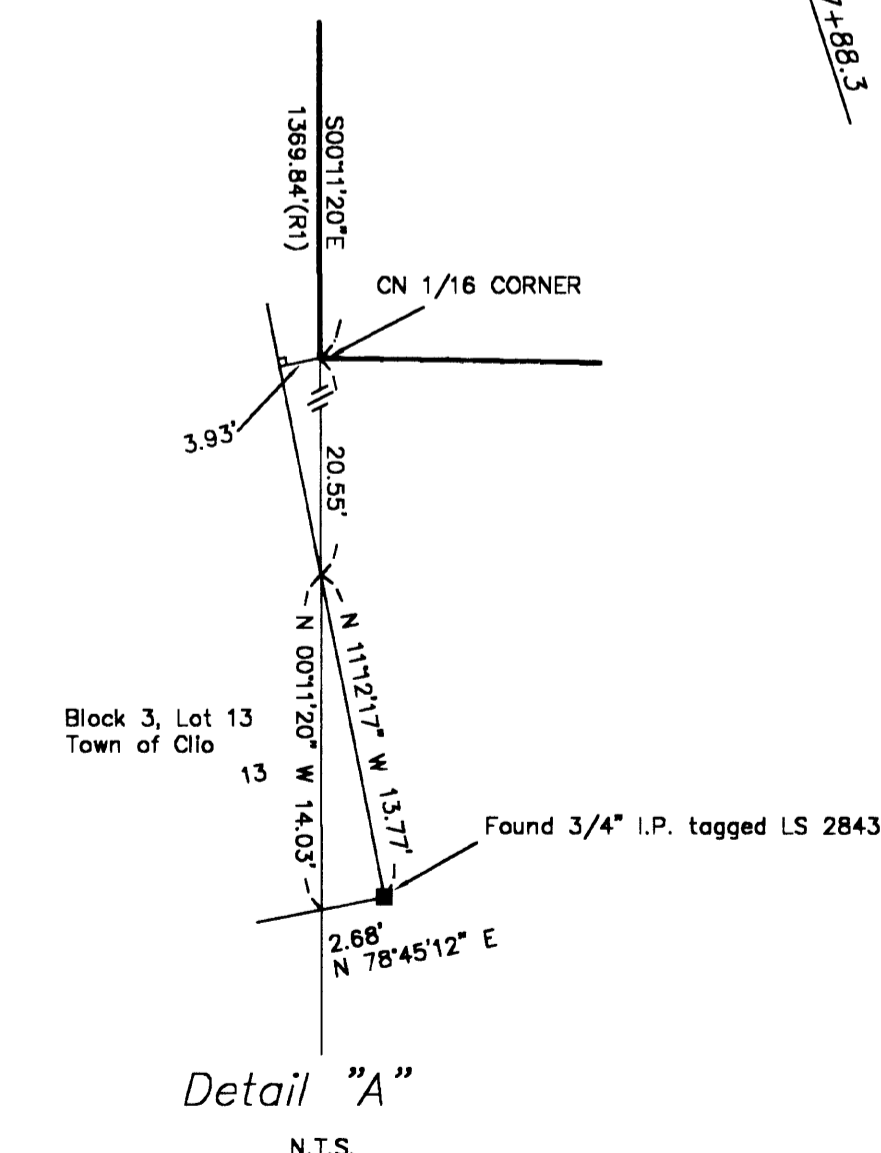
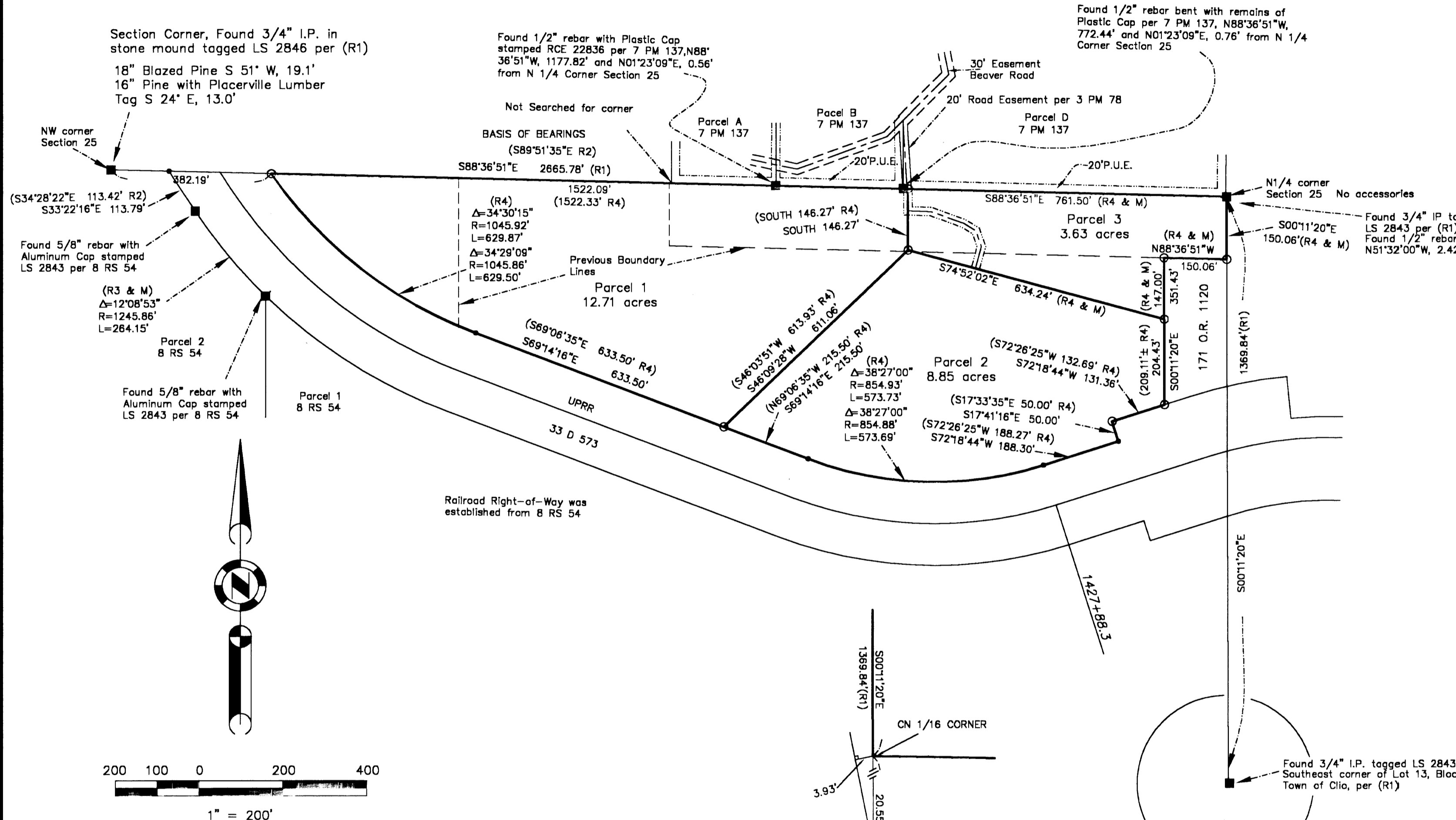
R. Tom Hunter
R. Tom Hunter RCE 30515
PLUMAS COUNTY SURVEYOR
License Expiration Date 3/31/04

RECORDER'S STATEMENT

Filed this 15th day of January, 2003 at 3:55 P.M. in Book 12 of Record of Surveys, at page 103, at the request of the County Surveyor.

Fee \$800
File No. 2003-524

Kathleen Williams
County Recorder
by *Jetty Samuel*
Deputy



RECORD OF SURVEY for Bruce Hamill

A portion of the N 1/2 of the NW 1/4 of Section 25, T. 22 N., R. 12 E., M.D.M.
 Plumas County ~ California
 Scale 1" = 200' June, 2002

Hamby Surveying Inc.
P.O. Box 1209
Portola, CA 96122
(530) 832-5571