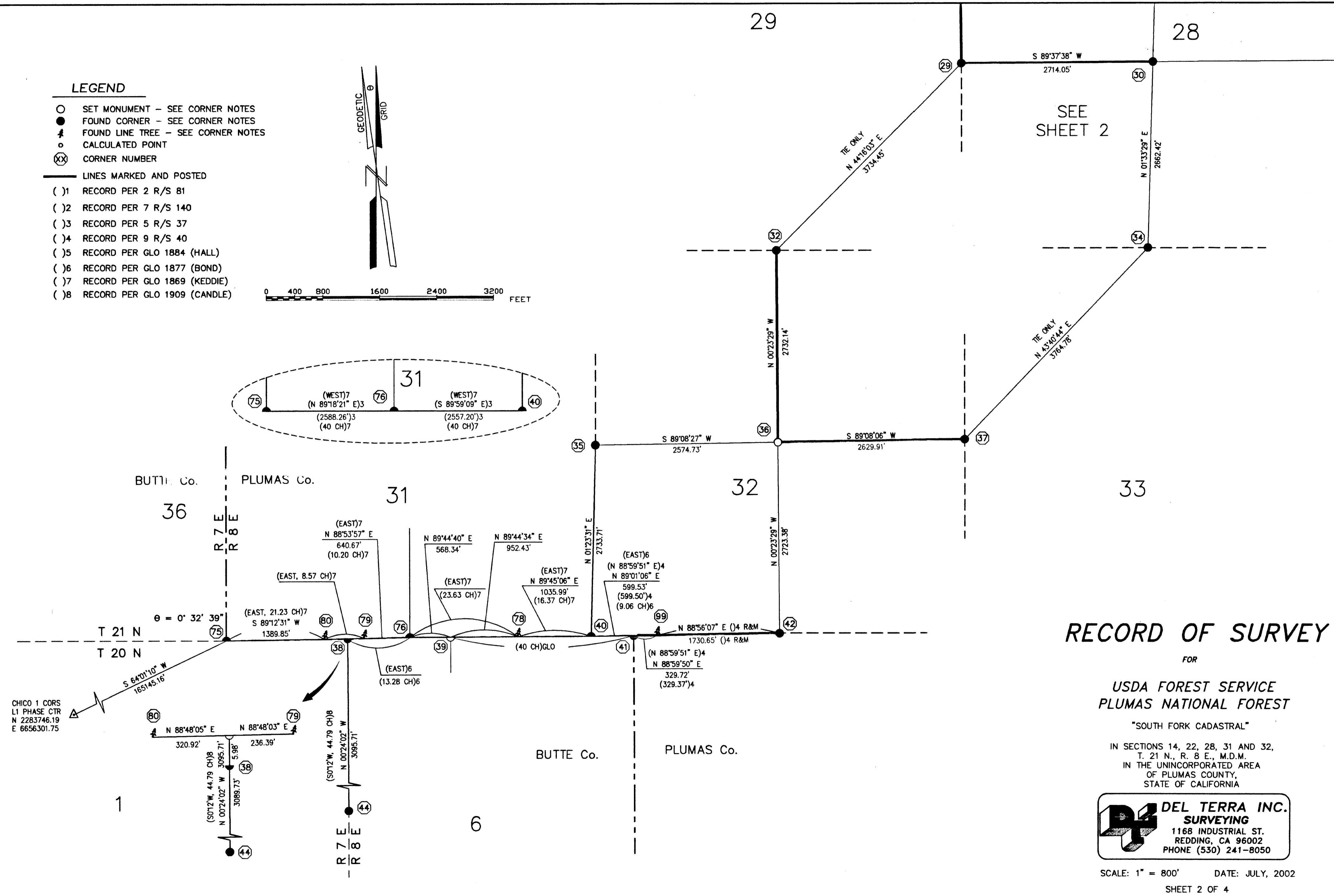
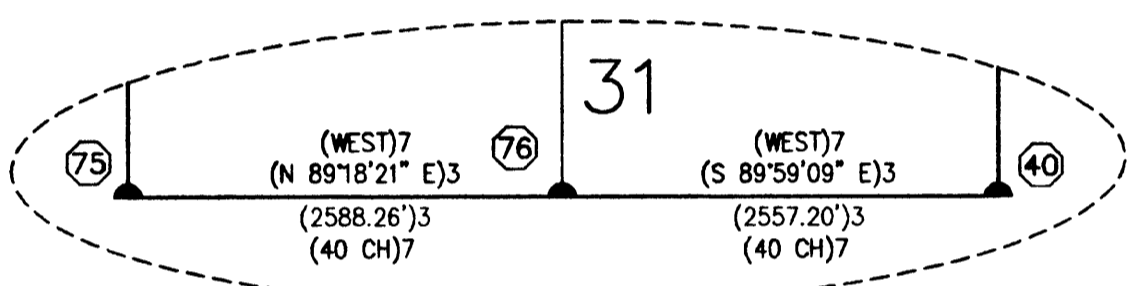
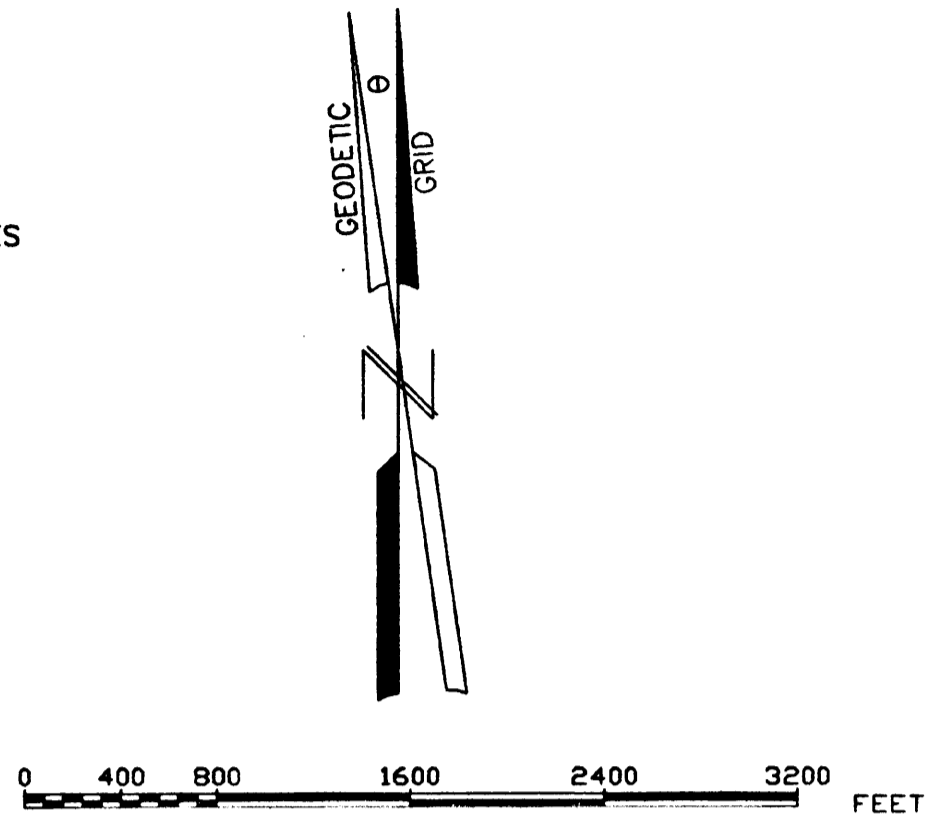


LEGEND

- SET MONUMENT - SEE CORNER NOTES
- FOUND CORNER - SEE CORNER NOTES
- ✱ FOUND LINE TREE - SEE CORNER NOTES
- CALCULATED POINT
- ⊗ CORNER NUMBER
- LINES MARKED AND POSTED
- (1) RECORD PER 2 R/S 81
- (2) RECORD PER 7 R/S 140
- (3) RECORD PER 5 R/S 37
- (4) RECORD PER 9 R/S 40
- (5) RECORD PER GLO 1884 (HALL)
- (6) RECORD PER GLO 1877 (BOND)
- (7) RECORD PER GLO 1869 (KEDDIE)
- (8) RECORD PER GLO 1909 (CANDLE)



RECORD OF SURVEY

FOR
**USDA FOREST SERVICE
PLUMAS NATIONAL FOREST**

"SOUTH FORK CADASTRAL"

IN SECTIONS 14, 22, 28, 31 AND 32,
T. 21 N., R. 8 E., M.D.M.
IN THE UNINCORPORATED AREA
OF PLUMAS COUNTY,
STATE OF CALIFORNIA

**DEL TERRA INC.
SURVEYING**
1168 INDUSTRIAL ST.
REDDING, CA 96002
PHONE (530) 241-8050

SCALE: 1" = 800' DATE: JULY, 2002
SHEET 2 OF 4