

### SURVEYOR'S STATEMENT

This map correctly represents a survey made by me or under my direction in conformance with the requirements of the Professional Land Surveyors' Act at the request of Plumas National Forest in JUNE 1995.

*William G. Snow*  
William Glenn Snow L.S. 5623  
License Exp. Date 12/31/06

### COUNTY SURVEYOR'S STATEMENT

This map has been examined in accordance with Section 8766 of the Professional Land Surveyors' Act this 29th day of May 2003.

*R. Tom Hunter*  
R. Tom Hunter R.C.E. 30515  
Plumas County Surveyor  
License Exp. Date 03/31/04

### RECORDER'S STATEMENT

Filed this 4th day of JUNE, 2003 at 1:40 pm  
in Book 12 of Records of Surveys, at page 126-129  
at the request of the County Surveyor.

Fee: \$14.00  
File No: 2003-6033

Kathleen Williams  
County Recorder  
By: *V. J. Smith*  
Deputy

### RECORD OF SURVEY

For Plumas National Forest  
T24N R7E S24, S25, S36 T24N R8E S30, S31  
T23N R7E S1, S2, S12 T23N R8E S5, S6, S7

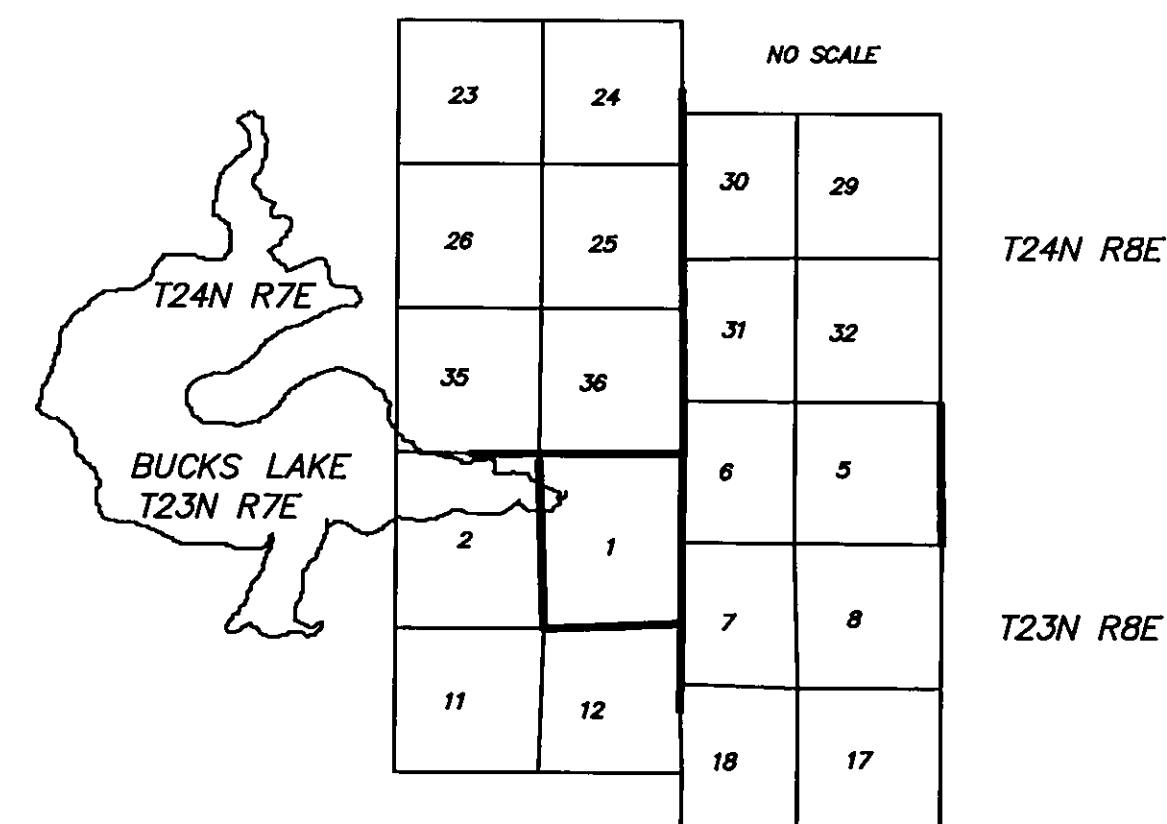
Mount Diablo Meridian  
Plumas County, California

Survey Crew:  
Bill Snow  
Dave Greenwell

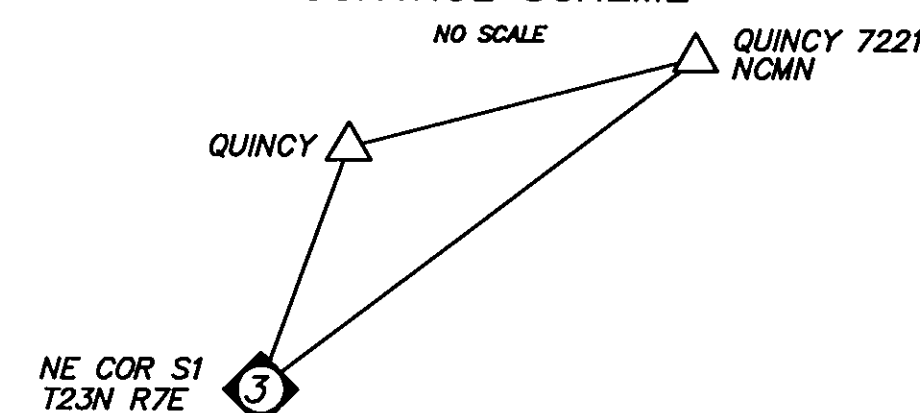
June 1995

Sheet: 1 of 4

### PROJECT LOCATION MAP



### CONTROL SCHEME



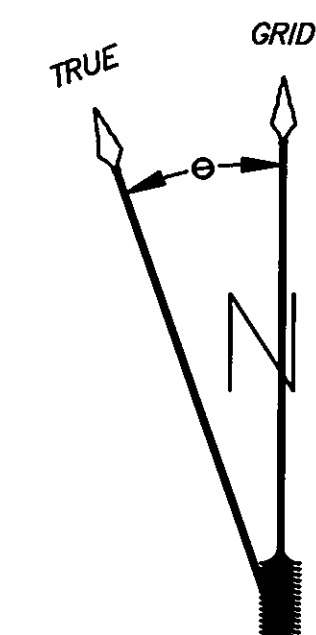
### RECORD INFORMATION

NOTE: ALL RECORD INFORMATION IS GIVEN IN PARENTHESES

R2	E. VON SCHMIDT	1875	GLO
R4	W. MINTO	1880	GLO
R5	D. HALL	1884	GLO
R6	A. SYDLIK	1970	BLM
R7	J. HAMBY	LS2843 1977	4RS150
R8	J. HAMBY	LS2843 1980	5RS127
R9	R. BARNHART	LS4202 1982	6RS46
R10	T24N R7E	GLO PLAT 1880	GLO

### CALIFORNIA COORDINATE SYSTEM OF 1983 (CCS83), ZONE 1

CORNER	NORTHING	EASTING
13	1850143.5978	6803946.4000
14	1850983.4899	6803939.5705
15	1853672.5440	6803911.6098
16	1855484.7974	6803892.1105
17	1856355.9730	6803873.7513
18	1839704.5174	6813550.9504
19	1844974.2385	6813473.7802



### SCALE

1 INCH = 3000 FEET  
0 3000 6000

### BASIS OF BEARING

MEASURED BEARINGS AND DISTANCES ARE GRID. THEY ARE BASED ON THE CALIFORNIA COORDINATE SYSTEM OF 1983(CCS83), ZONE 1.

θ AT THE NE CORNER OF SECTION 1 IS 00°33'52" MULTIPLY GRID DISTANCES BY 1.0002301 TO GET GROUND DISTANCES.

CONTROL WAS DONE WITH GPS, TRIMBLE NAVIGATION, 4000 ST, SINGLE FREQUENCY RECEIVERS. CONTROL WAS BROUGHT IN USING THE FOLLOWING STATIONS:

"QUINCY"  
LATITUDE: 39°56'32.58580" N 1864049.97763 N  
LONGITUDE: 120°57'12.32372" W 6855122.46788 E

"QUINCY 7221 NCMN"  
LATITUDE: 39°58'28.37468" N 1875796.22557 N  
LONGITUDE: 120°56'39.88049" W 6857508.12951 E

LATITUDES AND LONGITUDES AS PUBLISHED BY NATIONAL GEODETIC SURVEYS (NGS) IN FEBRUARY 1987.

### LEGEND

- ① FOUND CORNER
- ① SET CORNER
- PROPERTY BOUNDARY MARKED AND POSTED
- AREA SURVEYED ON PROJECT LOCATION MAP