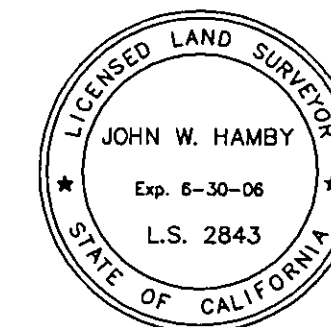


SURVEYOR'S STATEMENT

This map correctly represents a survey made by me or under my direction in conformance with the requirements of the Professional Land Surveyors' Act at the request of Bill Coates in August, 2005.



John W. Hamby
John W. Hamby LS 2843
License Exp. 6-30-06

COUNTY SURVEYOR'S STATEMENT

This map has been examined in accordance with Section 8766 of the Professional Land Surveyors' Act this 10th day of November, 2005.



R. Tom Hunter
R. Tom Hunter RCE 30515
PLUMAS COUNTY SURVEYOR
License Expiration Date 3/31/06

RECORDER'S STATEMENT

Filed this 10th day of November, 2005 at 3:30 p.m. in Book 13 of Record of Surveys, at page 139, at the request of the County Surveyor.

Fee: 8.00
Document No. 2005-0012345
Kathleen Williams
County Recorder
By: *Louise L. Davis*
Deputy

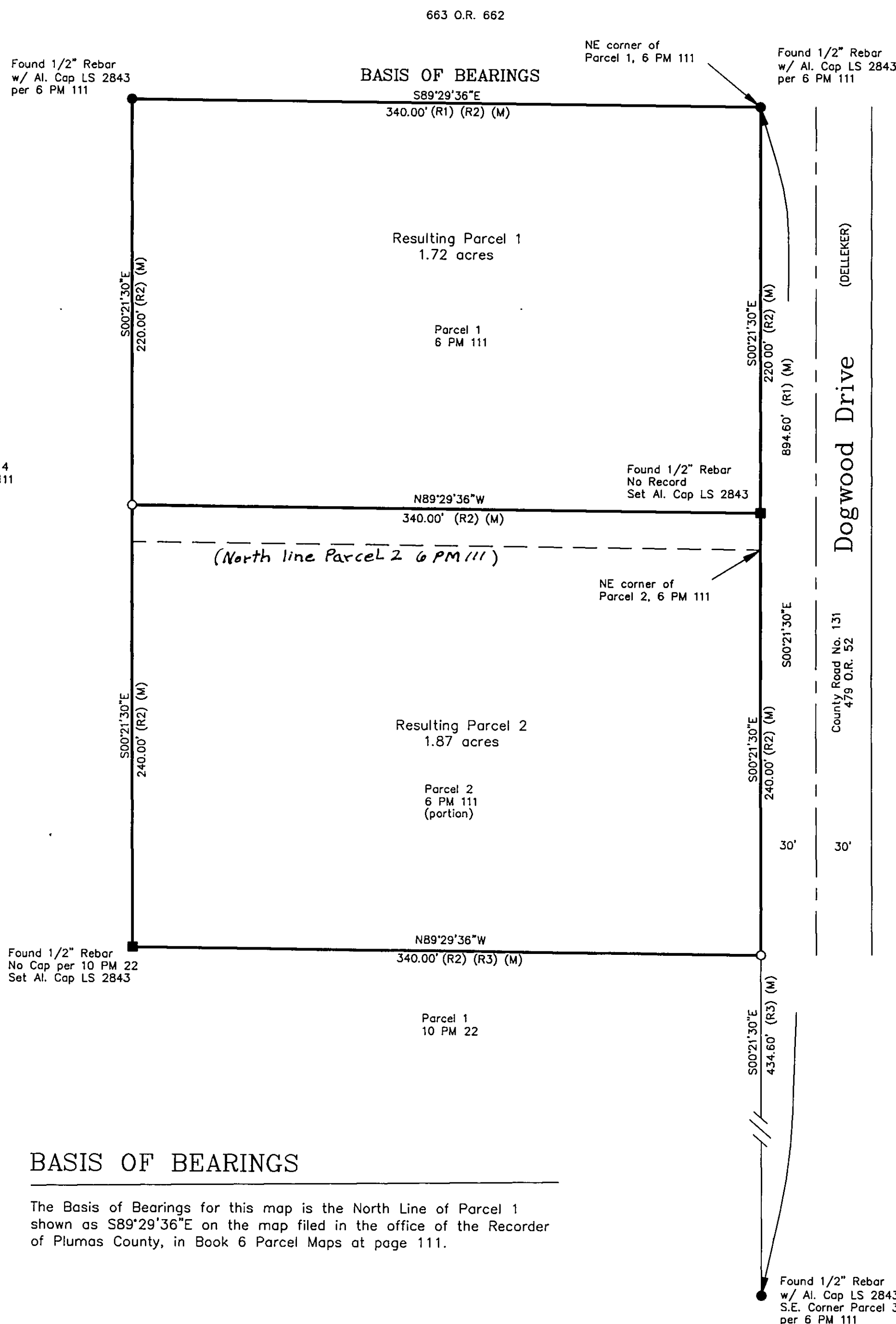
Record of Survey for BILL COATES and NABCO INC.

A portion of the NE 1/4 of Section 3
T. 22 N., R. 13 E., M.D.M.

Plumas County ~ California
Scale 1" = 50' August 2005

Hamby Surveying Inc.
P.O. Box 1209
Portola, CA 96122
(530) 832-5571

SHEET 1 OF 1



BASIS OF BEARINGS

The Basis of Bearings for this map is the North Line of Parcel 1 shown as S89°29'36"E on the map filed in the office of the Recorder of Plumas County, in Book 6 Parcel Maps at page 111.