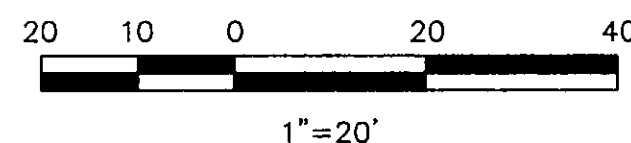
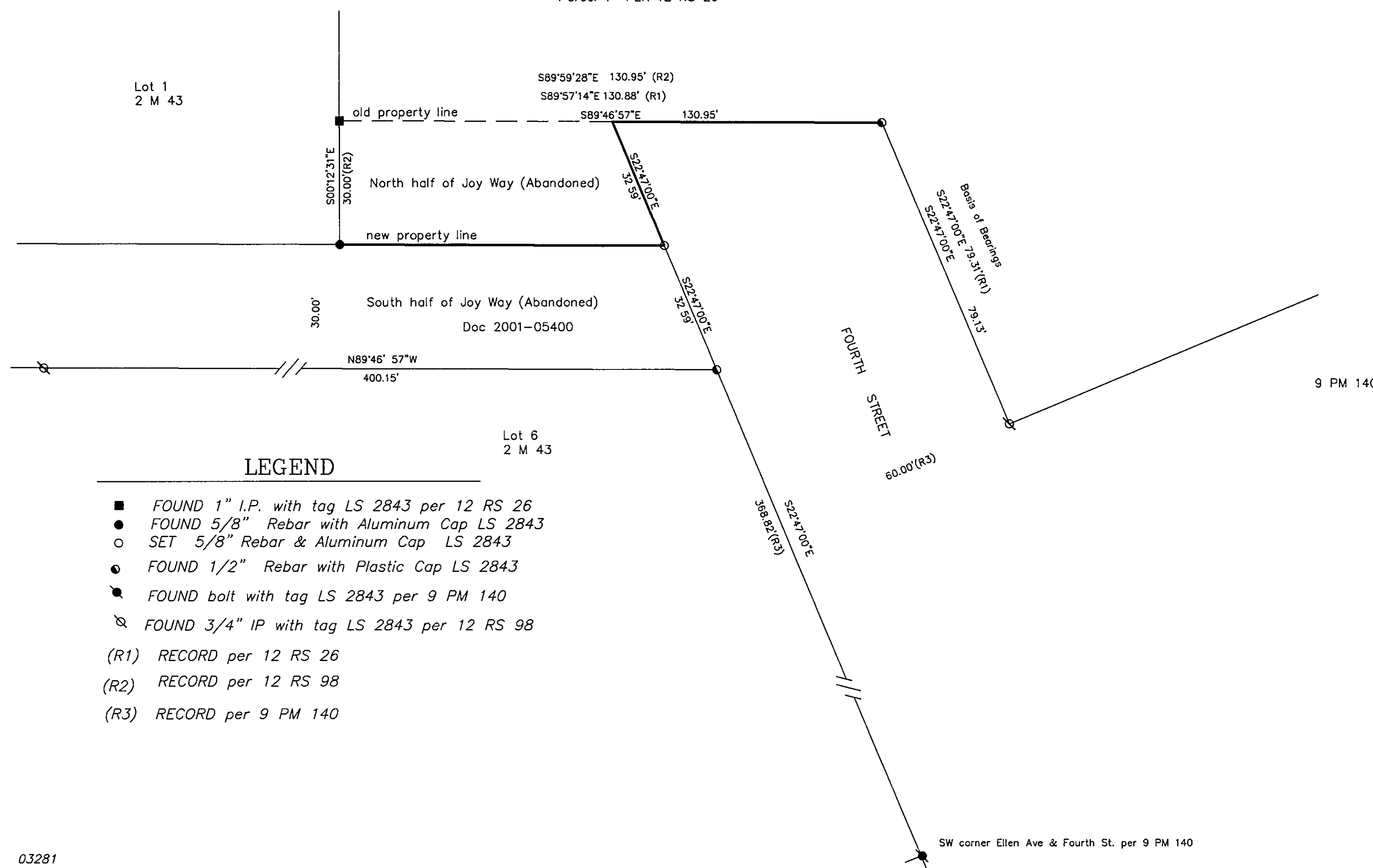


BASIS OF BEARINGS

The Basis of Bearings for this map is the Easterly line of Fourth Street, shown as S22°47'00"E on 12 RS 26.



Parcel 1 PER 12 RS 26

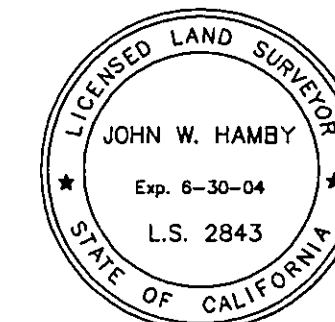
Lot 1
2 M 43

LEGEND

- FOUND 1" I.P. with tag LS 2843 per 12 RS 26
 - FOUND 5/8" Rebar with Aluminum Cap LS 2843
 - SET 5/8" Rebar & Aluminum Cap LS 2843
 - FOUND 1/2" Rebar with Plastic Cap LS 2843
 - FOUND bolt with tag LS 2843 per 9 PM 140
 - FOUND 3/4" IP with tag LS 2843 per 12 RS 98
- (R1) RECORD per 12 RS 26
 (R2) RECORD per 12 RS 98
 (R3) RECORD per 9 PM 140

SURVEYOR'S STATEMENT

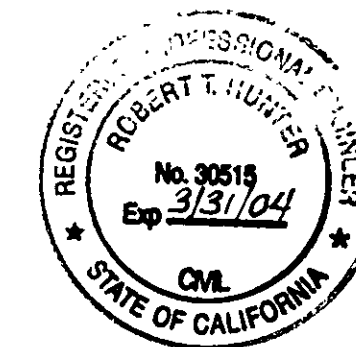
This map correctly represents a survey made by me or under my direction in conformance with the requirements of the Professional Land Surveyor's Act at the request of Ward Pearce in October, 2003.



John W. Hamby
 John W. Hamby LS 2843

COUNTY SURVEYOR'S STATEMENT

This map has been examined in accordance with Section 8766 of the Professional Land Surveyor's Act this 20th day of January, 2004.



R. Tom Hunter
 R. Tom Hunter RCE 30515
 PLUMAS COUNTY SURVEYOR
 License Expiration Date 3/31/04

RECORDER'S STATEMENT

Filed this 23rd day of January, 2004 at 1:45 P.m. in Book 13 of Record of Surveys, at page 17, at the request of the County Surveyor.

Fee \$8.00
 File No. 2003-674

Kathleen Williams
 County Recorder
 by *John W. Hamby*
 Deputy

RECORD OF SURVEY for WARD PEARCE

A portion of Lot 1 of 12 RS 26
 A portion of the NE 1/4 of Section 36
 T. 23 N., R. 13 E., M.D.M.

Plumas County ~ California
 Scale 1" = 20' November, 2003

Hamby Surveying Inc.
 P.O. Box 1209
 Portola, CA 96122
 (530) 832-5571

SHEET 1 OF 1