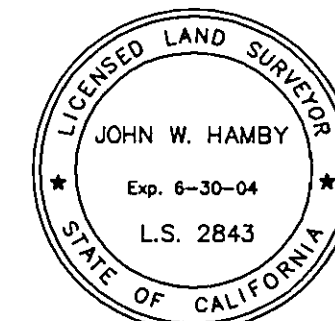


BASIS OF BEARINGS

The Basis of Bearings for this map is the West line of Lots 3 and 4, shown as S00°31'17"W on the map filed in the office of the Recorder of said Plumas County in Book 8 Maps page 83.

SURVEYOR'S STATEMENT

This map correctly represents a survey made by me or under my direction in conformance with the requirements of the Professional Land Surveyor's Act at the request of Bill Hannaman in October, 2003.



John W. Hamby
John W. Hamby LS 2843

COUNTY SURVEYOR'S STATEMENT

This map has been examined in accordance with Section 8766 of the Professional Land Surveyor's Act this 30th day of January, 2004.



R. Tom Hunter

R. Tom Hunter RCE 30515
PLUMAS COUNTY SURVEYOR
License Expiration Date 3/31/04

RECORDER'S STATEMENT

Filed this 3rd day of February, 2004 at 9:09a.m. in Book 13 of Record of Surveys, at page 24, at the request of the County Surveyor.

Fee \$8.00
File No. 2004-0933

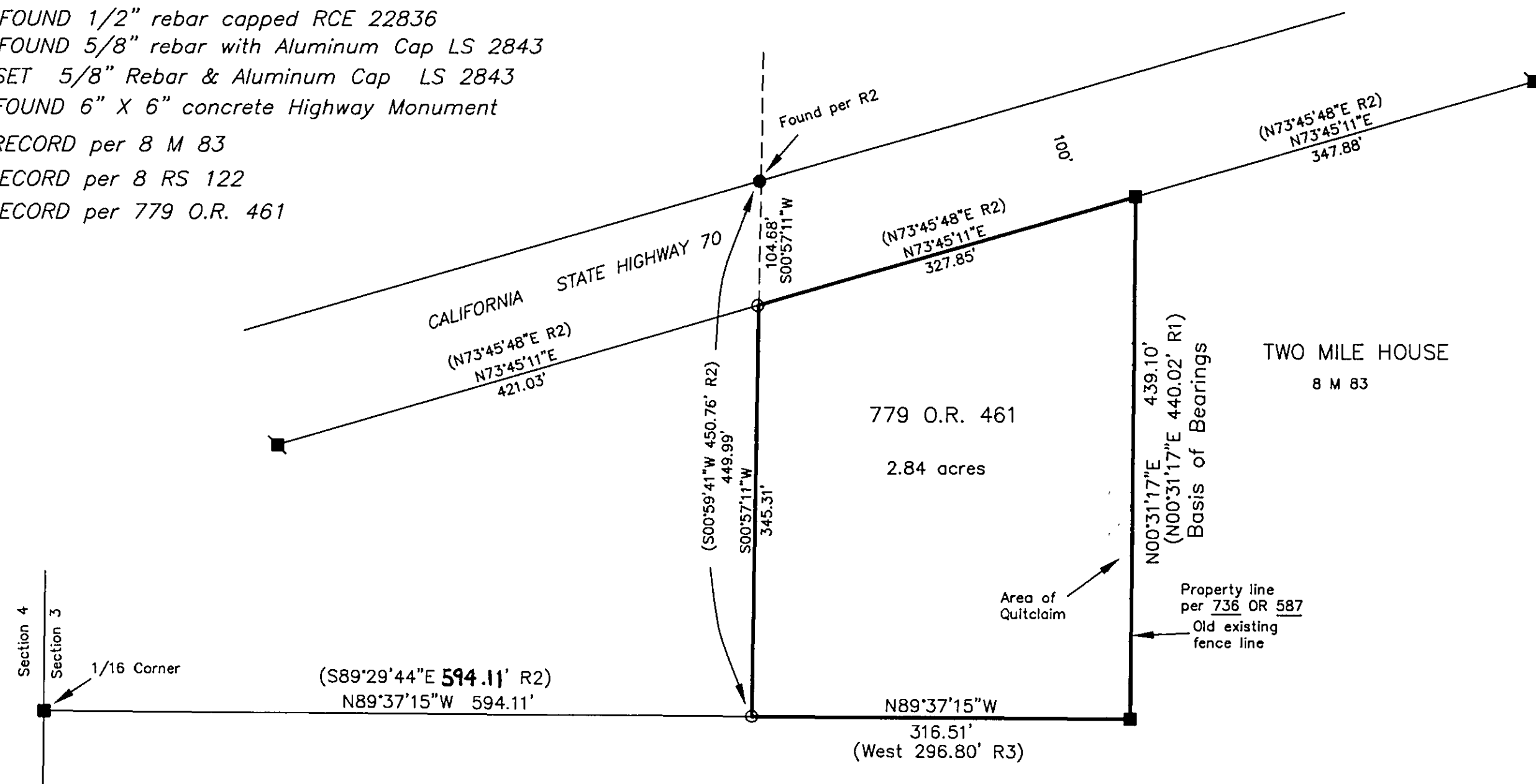
Kathleen Williams
County Recorder

by *Kathleen Williams*
Deputy

LEGEND

- FOUND 1/2" rebar capped RCE 22836
- FOUND 5/8" rebar with Aluminum Cap LS 2843
- SET 5/8" Rebar & Aluminum Cap LS 2843
- FOUND 6" X 6" concrete Highway Monument

- (R1) RECORD per 8 M 83
(R2) RECORD per 8 RS 122
(R3) RECORD per 779 O.R. 461



RECORD OF SURVEY for Mike Moreland

A portion of the NW 1/4 of Section 3
T. 22 N., R. 13 E., M.D.M.

Plumas County ~ California
Scale 1" = 100' November, 2003

Hamby Surveying Inc.
P.O. Box 1209
Portola, CA 96122
(530) 832-5571