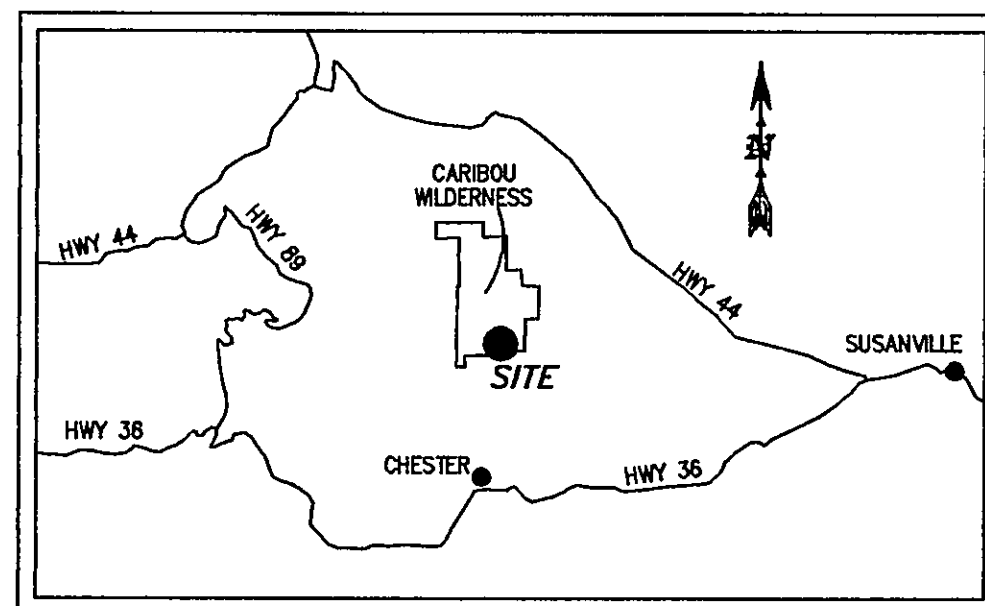


VICINITY MAP
NO SCALE**NOTE:**

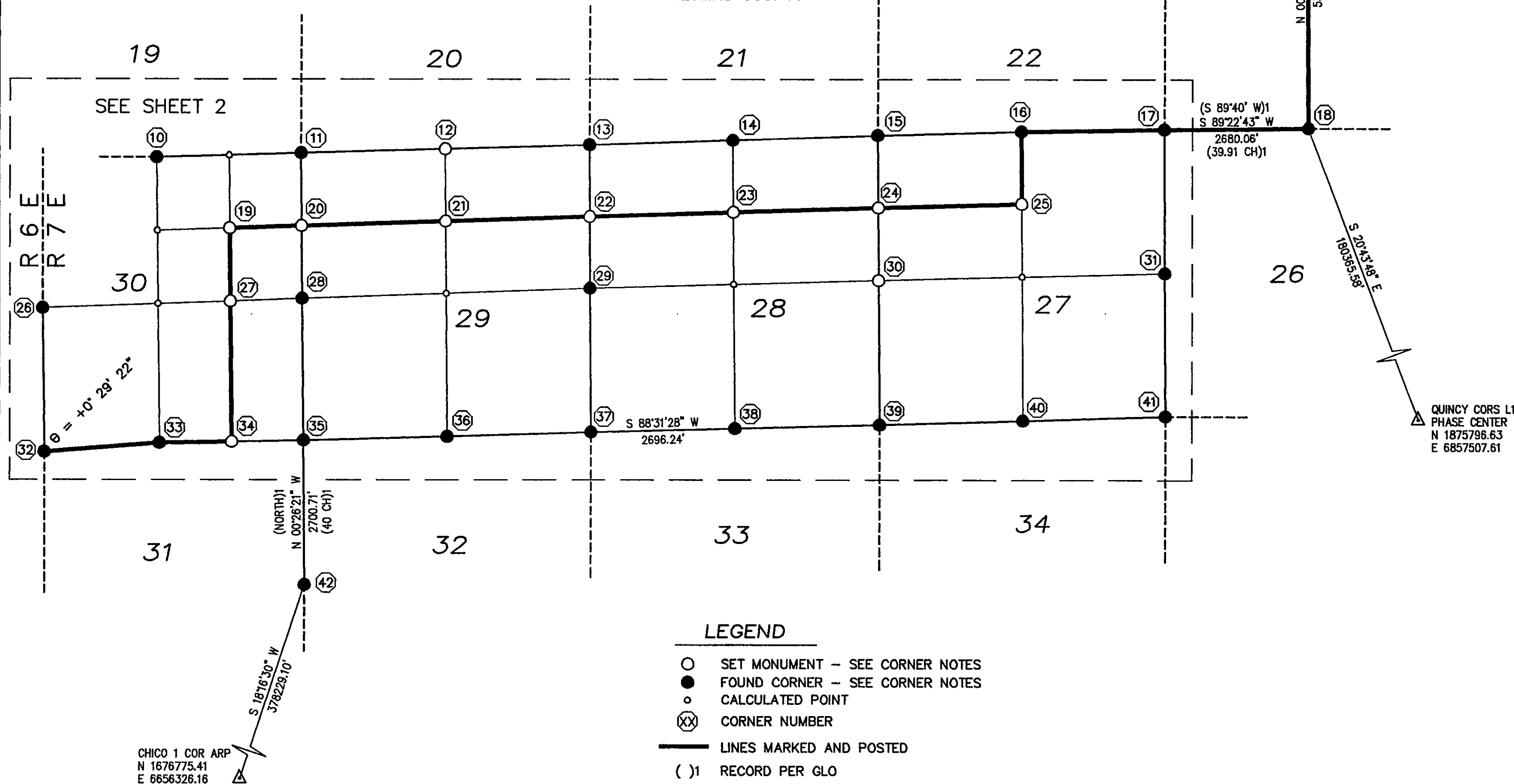
ALL CALCULATIONS PERFORMED USING BLM'S "CMM" PROGRAM WHICH WORKS USING GEODETIC COORDINATES. THE CLOSER A LINE IS TO EAST-WEST THE MORE PRONOUNCED IT'S APPARENT CURVE, AND ON THE GRID, POINTS ALONG THESE CURVED LINES APPEAR AS ANGLE POINTS.

**BASIS OF BEARINGS**

CALIFORNIA ZONE 1, NAD 83 GRID BEARINGS DERIVED FROM G.P.S. OBSERVATIONS. MAPPING ANGLES SHOWN AT CORNER NUMBERS 5 AND 32.
ALL DISTANCES SHOWN AS MEASURED ARE GRID DISTANCES. TO CONVERT TO GROUND, DIVIDE DISTANCES SHOWN BY 0.99960.

0 800 1600 3200 4800 6400 FEET

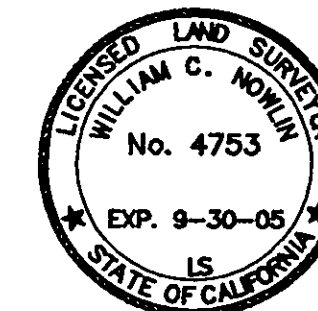
LASSEN COUNTY
PLUMAS COUNTY

**LEGEND**

- SET MONUMENT - SEE CORNER NOTES
- FOUND CORNER - SEE CORNER NOTES
- CALCULATED POINT
- ⊗ CORNER NUMBER
- LINES MARKED AND POSTED
- () RECORD PER GLO

SURVEYOR'S STATEMENT

THIS MAP CORRECTLY REPRESENTS A SURVEY MADE BY ME OR UNDER MY DIRECTION IN CONFORMANCE WITH THE REQUIREMENTS OF THE PROFESSIONAL LAND SURVEYORS' ACT AT THE REQUEST OF THE US FOREST SERVICE IN SEPTEMBER, 2003



SIGNED William C. Nowlin
WILLIAM C. NOWLIN L.S. 4753

COUNTY SURVEYOR'S STATEMENT

THIS MAP HAS BEEN EXAMINED IN ACCORDANCE WITH SECTION 8766 OF THE PROFESSIONAL LAND SURVEYORS' ACT THIS 20 DAY OF Sept., 2004.

SIGNED R. Tom Hunter
PLUMAS COUNTY SURVEYOR
R. TOM HUNTER, R.C.E. 30515
REG. EXP. 3/31/06

COUNTY RECORDER'S STATEMENT

FILED THIS 22nd DAY OF September, 2004, AT 3:26 P. M., IN BOOK 13 OF RECORD OF SURVEYS AT PAGE 68-71, AT THE REQUEST OF THE PLUMAS COUNTY SURVEYOR.

PLUMAS COUNTY RECORDER
KATHLEEN WILLIAMS

BY Aura Davis
DEPUTY

FEE \$14.00 DOC. # 2004-0010081

RECORD OF SURVEY

FOR

USDA FOREST SERVICE
PLUMAS NATIONAL FOREST

"SOUTH CARIBOU"

IN SECTIONS 13, 14 & 23 IN THE UNINCORPORATED AREA OF LASSEN COUNTY, AND IN SECTIONS 23, 27, 28, 29 AND 30 IN THE UNINCORPORATED AREA OF PLUMAS COUNTY,
ALL IN T 30 N., R 7 E, MDM,
STATE OF CALIFORNIA



SCALE: 1" = 1600' DATE: NOVEMBER, 2003
SHEET 1 OF 4