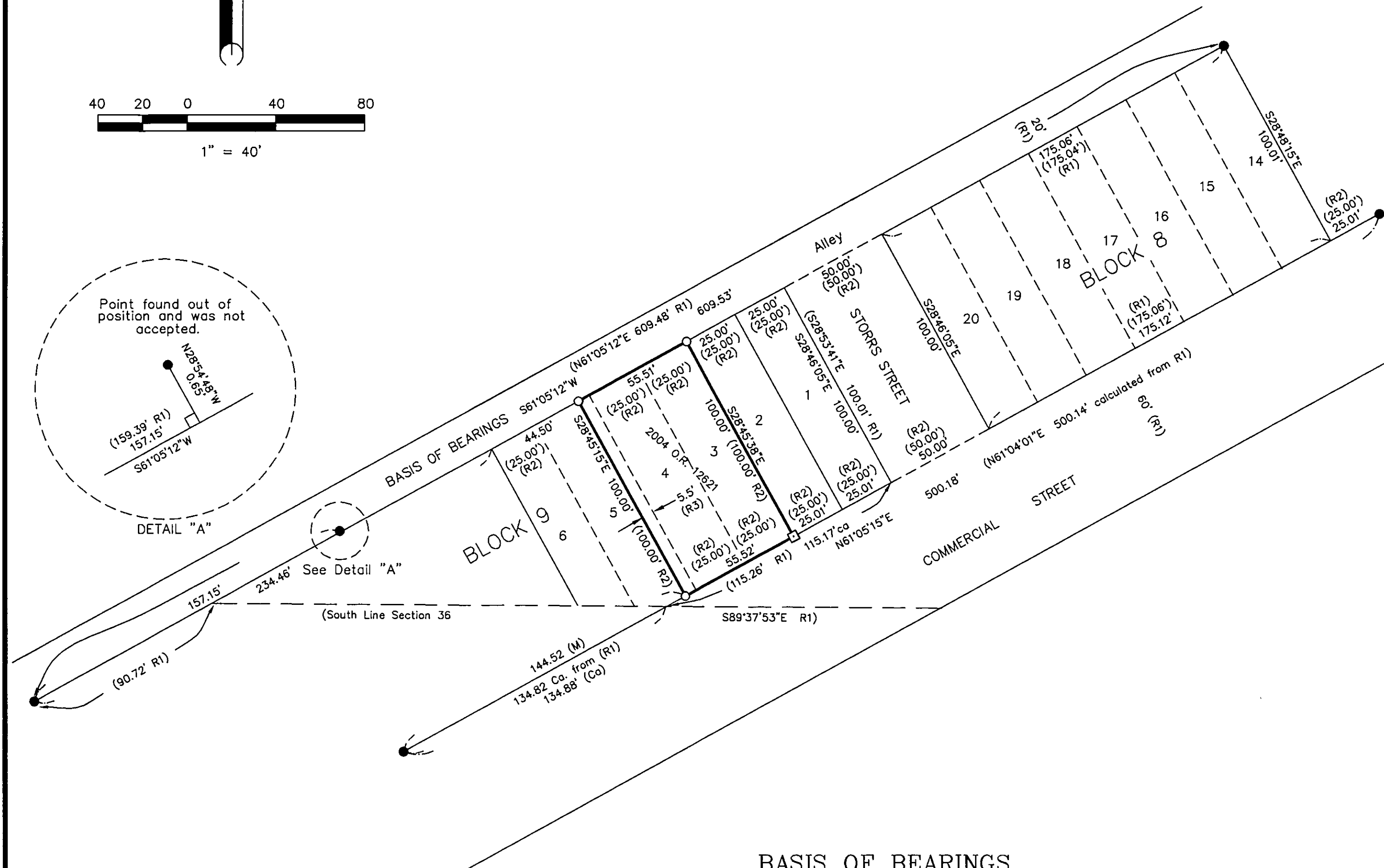
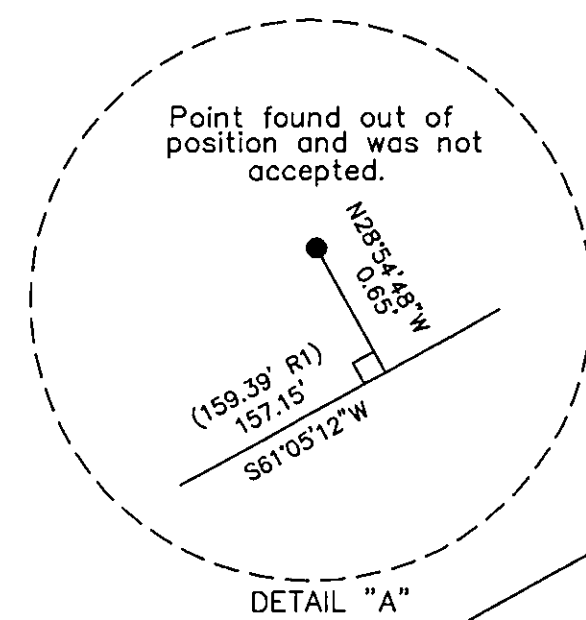
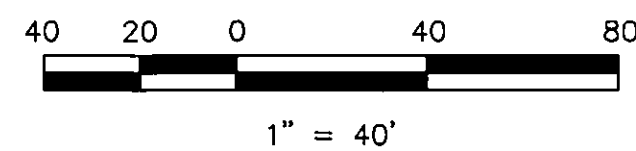


## LEGEND

- FOUND 5/8" Rebar with Aluminum Cap LS 2843 per (R1)
- SET 5/8" Rebar & Aluminum Cap LS 2843
- SET Nail and Tag LS 2843 in concrete sidewalk
- R1 RECORD per 8 RS 67
- R2 RECORD per Bk. A page 34
- R3 RECORD per 2004 O.R. 12621
- └ Nothing Found or Set
- ca Calculated
- (M) Measured

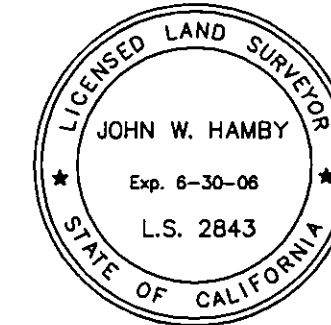


## BASIS OF BEARINGS

The Basis of Bearings for this map is the South line of the 20' Alley North of Commercial Street, shown as N 61°05'12" E on the map filed in the Office of the Recorder of Plumas County in Book 8 Record of Surveys, at page 67.

## SURVEYOR'S STATEMENT

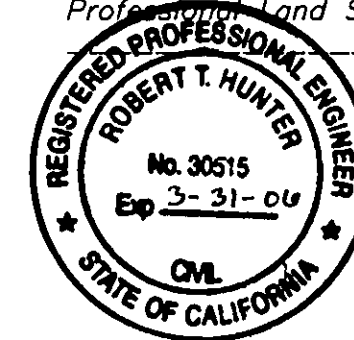
This map correctly represents a survey made by me or under my direction in conformance with the requirements of the Professional Land Surveyors' Act at the request of Peter Morris in October, 2004.



*John W. Hamby*  
John W. Hamby LS 2843  
License Exp. 6-30-04

## COUNTY SURVEYOR'S STATEMENT

This map has been examined in accordance with Section 8766 of the Professional Land Surveyors' Act this 14<sup>th</sup> day of February, 2005.



*R. Tom Hunter*  
R. Tom Hunter RCE 30515  
PLUMAS COUNTY SURVEYOR  
License Expiration Date 3/31/04

## RECORDER'S STATEMENT

Filed this 14<sup>th</sup> day of February, 2005 at 3:39 p.m. in Book 13 of Record of Surveys, at page 98, at the request of the County Surveyor.

Fee: 8.00

Document No. 2005-1609

Kathleen Williams  
County Recorder

By: *Ane A. Perry*  
Deputy

# RECORD OF SURVEY for Peter Morris

Lots 3 & 4 and the East 5'-6" of Lot 5  
Block 9, Map of Portola Townsite  
Book A Maps page 34

A portion of the NE 1/4 of Section 36  
T. 23 N., R. 13 E., M.D.M.

Plumas County ~ California  
Scale 1" = 40' October, 2004

Hamby Surveying Inc.  
P.O. Box 1209  
Portola, CA 96122  
(530) 832-5571