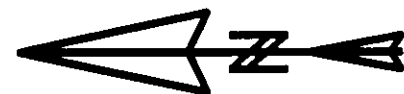


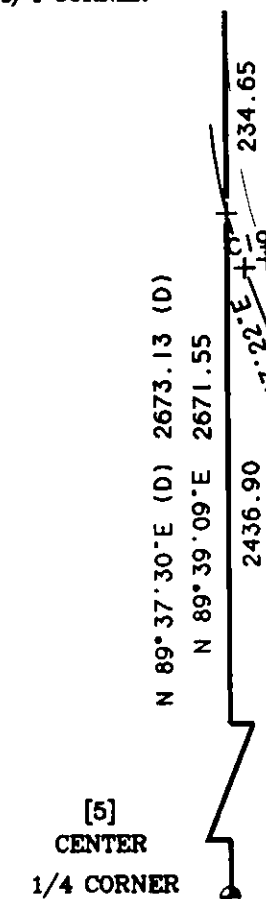
BASIS OF BEARINGS

THE SECTION LINE COMMON TO SECTIONS 33 AND 34, T. 24N. R. 11E, M.D.M. REPORTED AS N 00°02'15" W. IN THE BUREAU OF LAND MANAGEMENT NOTES OF AUGUST 2, 1966 FROM THE 1/4 CORNER COMMON TO SECTIONS 33 AND 34, AND THE SECTION CORNER COMMON TO SECTIONS 28, 27, 33 & 34, IS THE BASIS OF BEARINGS SHOWN ON THIS MAP.



SCALE 1 INCH = 200 FEET

[4] 1/4 CORNER



CORNER NOTES

- [1] B.L.M. DISK MARKED FOR THE SECTION CORNER COMMON TO SECTIONS 27, 28, 33 & 34. BEARING TREES PER (D) 20° PINE S 32-30 W, A DISTANCE OF 47.5 FEET 19° OAK N 69 W, A DISTANCE OF 38.3 FEET
[2] B.L.M. DISK MARKED FOR THE 1/4 CORNER BETWEEN SECTIONS 28 AND 33. BEARING TREES PER (D) 12° CEDAR S 11 W, A DISTANCE OF 64.7 FEET 9° PINE N 11-30 W, A DISTANCE OF 44.2 FEET
[3] B.L.M. DISK MARKED FOR THE 1/4 CORNER BETWEEN SECTIONS 33 AND 34. BEARING TREES PER (D) 41° FIR SNAG S 75 W, A DISTANCE OF 28.4 FEET 13° PINE S 07-30 E, A DISTANCE OF 31.7 FEET 8° FIR S 28 W, A DISTANCE OF 6.6 FEET

- [4] B.L.M. DISK MARKED FOR THE 1/4 CORNER BETWEEN SECTIONS 27 AND 28. BEARING TREES PER (D) 18° OAK SNAG S 68 E, A DISTANCE OF 7.9 FEET 18° OAK S 45 W, A DISTANCE OF 53.7 FEET 9° FIR N 65 E, A DISTANCE OF 11.9 FEET
[5] B.L.M. DISK MARKED FOR THE CENTER 1/4 CORNER OF SECTION 28. BEARING TREES PER (D) 7° PINE N 24 E, A DISTANCE OF 12.2 FEET 6° OAK S 66-45 W, A DISTANCE OF 6.6 FEET
[6] FOUND 1" IRON PIPE, SET TAG P.L.S. 6061
[7] FOUND 1/2" IRON PIPE, SET TAG P.L.S. 6051
[8] FOUND 5/8" REBAR AND CAP MARKED L.S. 2843

LEGEND

- o SET 1/2 INCH REBAR AND CAP MARKED P.L.S. 6051
o FOUND 1 INCH IRON PIPE AND TAG R.C.E. 13064, OR NOTED
o FOUND 1/2 INCH IRON PIPE AND TAG, R.C.E. 13064 OR NOTED
+ POSITION ESTABLISHED FROM RECORD, NOTHING FOUND OR SET
(A) RECORD INFORMATION PER BOOK 665 OF OFFICIAL RECORDS, PAGE 557
(B) RECORD INFORMATION PER BOOK 3 OF SUBDIVISION MAPS, PAGES 70 - 75
(D) RECORD INFORMATION PER B.L.M. FIELD NOTES, AUGUST 22, 1966
[No.] KEY TO CORNER NOTES

CURVE TABLE

Table with columns for MEASURED and RECORD, including CURVE, DELTA ANGLE, RADIUS, and ARC. Lists curves C1 through C22 with their respective measurements.

BASIS OF BEARINGS

N 00°15'00"W 2659.04 N 00°15'30"W (D) 2658.94 (D) N 00°02'15"W 2672.93 N 00°02'15"W (D) 2673.13 (D) 2455.31

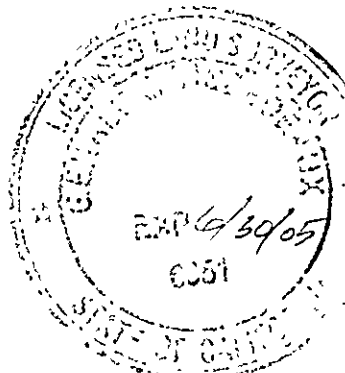
LINE TABLE

Table with columns for MEASURED and RECORD, including LINE, BEARING, and DISTANCE. Lists lines L1 through L32 with their respective bearings and distances.

SURVEYOR'S STATEMENT

THIS MAP CORRECTLY REPRESENTS A SURVEY MADE BY ME OR UNDER MY DIRECTION IN CONFORMANCE WITH THE REQUIREMENTS OF THE PROFESSIONAL LAND SURVEYORS' ACT AT THE REQUEST OF RALPH AND PATRICIA WILBURN IN APRIL 2004.

GERALD JOSEPH TIBBEDEAUX P.L.S. 6061 LICENSE EXPIRES 6-30-06



MAP NOTE

1. THE ROAD AND UTILITY EASEMENTS SHOWN HEREBY AS THE EXTENSIONS OF RUNNING SPRINGS LANE AND FOUNTAIN SPRINGS LANE ARE PRIVATE EASEMENTS NOT SUBJECT TO IMPROVEMENT OR MAINTENANCE BY PLUMAS COUNTY. SAID EASEMENTS WILL NOT BECOME EFFECTIVE UNLESS AND UNTIL RESERVATIONS AND GRANTS ARE INCLUDED IN THE RESPECTIVE DEEDS.

LOT LINE ADJUSTMENT NOTE

THIS RECORD OF SURVEY WAS PREPARED TO REFLECT A LOT LINE ADJUSTMENT FOR WHICH A RESOLUTION IS RECORDED AS DOCUMENT No. 2004-0013186 & No. 2004-0013193 OF OFFICIAL RECORDS.

COUNTY SURVEYOR'S STATEMENT

THIS MAP HAS BEEN EXAMINED IN ACCORDANCE WITH SECTION 8766 OF THE PROFESSIONAL LAND SURVEYORS' ACT THIS 24th DAY OF April 2005.

R. Tom Hunter R.C.E. 30615 PLUMAS COUNTY SURVEYOR LICENSE EXPIRES 3-31-06



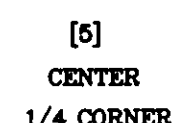
COUNTY RECORDERS STATEMENT

FILED THIS 28th DAY OF April 2005 AT 2:27 P.M. IN BOOK 105-106 OF RECORDS OF SURVEYS, AT PAGE 105-106 AT THE REQUEST OF THE COUNTY SURVEYOR.

KATHLEEN WILLIAMS, COUNTY RECORDER BY: Laura Lewis DEPUTY

FEE: \$10.00

DOCUMENT No. 2005-4190



SECTION 28 SECTION 33 NORTH - SOUTH CENTERLINE OF SECTION 28 S 00°27'18"E 2650.97 S 00°30'45"E (D) 2650.96 (D)

GREENHORN RANCH SUBDIVISION No. 1 (3 M. 70-75)

RECORD OF SURVEY FOR RALPH D. & PATRICIA G. WILBURN

WITHIN THE NORTHEAST 1/4 OF SECTION 33, AND THE SOUTHEAST 1/4 OF SECTION 28, TOWNSHIP 24 NORTH, RANGE 11 EAST, M.D.M.

PLUMAS COUNTY CALIFORNIA SCALE 1 INCH = 200 FEET APRIL 2004

Tibbdeaux Surveying P.O. Box 1960 - 565 Ridge St. Portola, CA 96122 (530) 832-5772