

Record of Survey

Empire Cadastral Survey

Sec. 25 & 36, T. 25 N., R 10 E

Sec. 7, 9, 10, 15, 16 & 17, T. 24 N., R. 11E.

Mt. Diablo Meridian, CA

NARRATIVE - KING SOLOMON CONSOLIDATED MINE

SECTION 25, T. 25 N., R. 10 E.

History - The King Solomon Consolidated Mine was originally surveyed by Arthur W. Keddie, Mineral Surveyor in 1912 under Mineral Survey No 4988. We found no records of any resurveys of the mineral survey.

Procedure - We found five of the six original corners. After a diligent search for Corner No. 1 of the Grand Prize Lode we determined that the corner was lost. We remonumented the corner by using a bearing-bearing intersection as per the BLM 1980 Mineral Survey Procedures Guide.

1. CORNER NO. 3 KING SOLOMON LODE

Arthur W. Keddie, Mineral Surveyor, 1912

Set: A fir post 3 1/2 ft. long, 4 ins. square, set 18 ins. in the ground, with mound of stones, scribed KSQM, No.3 - 4988, whence

A fir tree, 6 ins. dia., bears S 10°W 25.6 ft.

A fir tree, 10 ins. dia., bears N 9°45' W 8.4 ft.

both trees blazed and scribed KSQM No. 3 - 4988 - BT

Wallowa Associates, 2004

Found: a 4 x 4 in. post with visible scribing (not original) with painted red top, in stone mound, from which

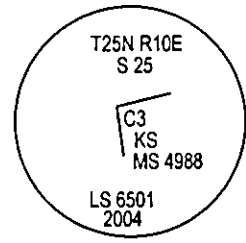
A fir, 21 ins. diam., alive & healthy, with healed blaze, bears S 10°W 25.6 ft.

A fir, 21 ins. diam., alive & healthy, with healed blaze, bears N 9°45' W 8.4 ft.

Set: 3 1/4 in. alum. cap on 3/4 in. diam., alum drive rod, 30 ins. long, buried 24 ins. in ground, with rock mound, magnet in base of monument.

State Plane Coordinates, CA Zone 1

N 1886210.92 Ft. E 6893560.31 Ft.



2. CORNER NO. 3 GRAND PRIZE LODE,

CORNER NO. 4 KING SOLOMON LODE

Arthur W. Keddie, Mineral Surveyor, 1912

Set: A tamarack post 3 1/2 ft. long, 4 ins. square, set 18 ins. in the ground, with mound of stones, scribed GPQM, No.3 - KSQM No. 4 - 4988, whence

A fir tree, 15 ins. dia., bears N 78°16' E 38.1 ft.

A fir tree, 24 ins. dia., bears S 21°30' W 25.4 ft.

both trees blazed and scribed GPQM No. 3 - KSQM No. 4 - 4988 - BT

Wallowa Associates, 2004

Found: 4 x 4 in. post with scribing (not original) in rock mound with post hole in center, from which

A fir, 30 ins. diam., alive & healthy with healed blaze opened with scribing visible, bears N 78°16' E 38.1 ft.

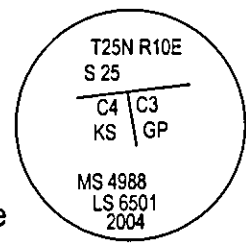
A stump hole bears S 21°30' W 25.4 ft.

Set: 3 1/4 in. alum. cap on 3/4 in. diam., alum drive rod, 30 ins. long, buried 28 ins. in ground, with rock mound, magnet in base of monument, from which

A fir, 8 ins. diam., bears S 7 1/2° W 40.6 ft. mkd. X BT.

State Plane Coordinates, CA Zone 1

N 1886664.77 Ft. E 6894985.70 Ft.



3. CORNER NO. 4 GRAND PRIZE LODE

Arthur W. Keddie, Mineral Surveyor, 1912

Set: A fir post 3 1/2 ft. long, 4 ins. square, set 18 ins. in the ground, with mound of stones, scribed GPQM, No.4 - 4988, whence

A sugar pine tree, 9 ins. dia., bears S 61 1/2° E 25.2 ft.

A fir tree, 30 ins. dia., bears N 7°06' W 8.4 ft.

both trees blazed and scribed GPQM No. 4 - 4988 - BT

Wallowa Associates, 2004

Found: a stone mound with remains of post hole in center, from which

A sugar pine, 28 ins. diam., alive & healthy, with healed blaze, bears S 61 1/2° E 25.2 ft.

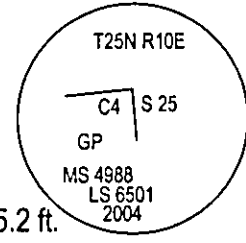
A 36 in. x 2 ft. high fir stump, with section of tree dead & down nearby with blaze & scribing visible, bears N 7°06' W 8.4 ft.

Set: 3 1/4 in. alum. cap on 3/4 in. diam., alum drive rod, 30 ins. long, buried 18 ins. in ground, with rock mound, magnet in base of monument, from which

A fir, 17 ins. diam., bears N 40° W 74.5 ft. mkd. C4 GP MS 4988 BT.

State Plane Coordinates, CA Zone 1

N 1887117.36 Ft. E 6896411.72 Ft.



4. CORNER NO. 2 KING SOLOMON LODE

Arthur W. Keddie, Mineral Surveyor, 1912

Set: A fir post 3 1/2 ft. long, 4 ins. square, set 18 ins. in the ground, with mound of stones, scribed KSQM, No.2 - 4988, whence

A white pine tree, 15 ins. dia., bears N 85°55' E 13 ft.

A white pine tree, 15 ins. dia., bears N 87° W 11.6 ft.

both trees blazed and scribed KSQM No. 2 - 4988 - BT

Wallowa Associates, 2004

Found: a 4 x 4 in. post (not original) painted white with red top, on ground near stone mound, from which

A white pine, 22 ins. diam., alive but not healthy, with partially healed blaze, scribing visible, bears N 85°55' E 13 ft.

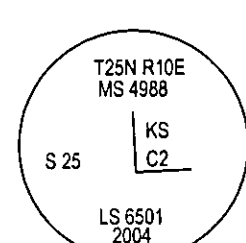
A white pine, 26 ins. diam., alive & healthy, with partially healed blaze, scribing visible, bears N 87° W 11.6 ft.

Set: 3 1/4 in. alum. cap on 3/4 in. diam., alum drive rod, 30 ins. long, buried 21 ins. in ground, bottom 19 ins. in concrete filled drill hole, with rock mound, magnet in base of monument, from which

A 1 in. diam. x 5 in. deep drill hole, with pink plastic cap in 11 ft. x 4 ft. x 5 ft. high NW rock face, bears S 58° E 25.4 ft.

State Plane Coordinates, CA Zone 1

N 1885642.945 Ft. E 6893742.02 Ft.



5. CORNER NO. 2 GRAND PRIZE LODE,

CORNER NO. 1 KING SOLOMON LODE

Arthur W. Keddie, Mineral Surveyor, 1912

Set: A fir post 3 1/2 ft. long, 4 ins. square, set 18 ins. in the ground, with mound of stones, scribed GPQM, No.2 - KSQM No. 1 - 4988, whence

A fir tree, 36 ins. dia., bears N 37°16' E 22.5 ft.

A fir tree, 36 ins. dia., bears N 65°12' W 55.6 ft.

both trees blazed and scribed GPQM No. 2 - KSQM No. 1 - 4988 - BT

Wallowa Associates, 2004

Found 4 x 4 in. post (not original) in rock mound on bedrock, from which

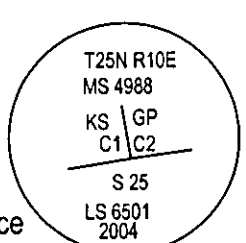
A fir, 46 ins. diam., alive & healthy with healed blaze bears N 37°16' E 22.5 ft.

A fir, 42 ins. diam., alive & healthy with healed blaze bears N 65°12' W 55.6 ft.

Set: 3 1/4 in. alum. cap on 3/4 in. diam., alum drive rod, 30 ins. long, buried 20 ins. in ground, bottom 20 ins. in concrete filled drill hole with rock mound, magnet in base of monument.

State Plane Coordinates, CA Zone 1

N 1886093.35 Ft. E 6895166.96 Ft.



6. CORNER NO. 1 GRAND PRIZE LODE

Arthur W. Keddie, Mineral Surveyor, 1912

Set: A fir post 4 ft. long, 4 ins. square, set 18 ins. in the ground, with mound of stones, scribed GPQM, No.1 - 4988, whence

A fir tree, 24 ins. dia., bears N 0°30' E 24 ft.

A fir tree, 18 ins. dia., bears S 7° E 23 ft.

both trees blazed and scribed GPQM No. 1 - 4988 - BT

Wallowa Associates, 2004

Found: no evidence of the original corner.

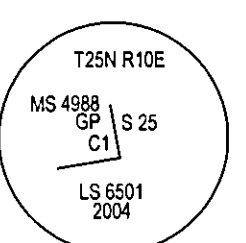
Set: a 30 in. x 3/4 in. aluminum drive rod driven 28 in. in the ground with 3 1/4 in. aluminum cap.

A sugar pine 21 ins. diam., bears S 4° E 57.7 ft. mkd. "X BT" on a double blaze.

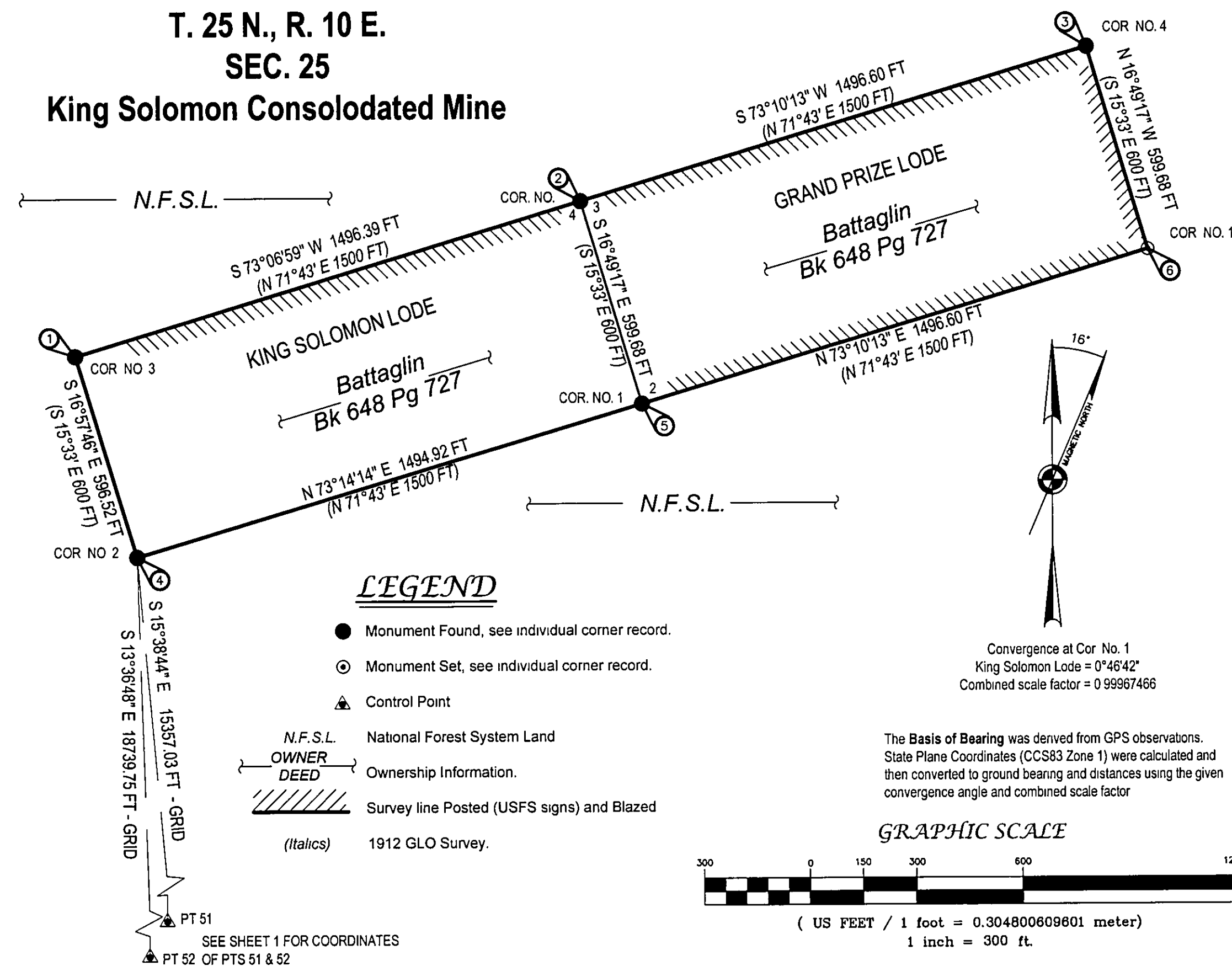
A white fir, 16 ins. diam., bears N 88 3/4° W 59.5 ft. mkd. "C1 GP MS 4988 BT"

State Plane Coordinates, CA Zone 1

N 1886545.93 Ft. E 6896592.98 Ft.



T. 25 N., R. 10 E.
SEC. 25
King Solomon Consolidated Mine



LEGEND

- Monument Found, see individual corner record.
- ⊙ Monument Set, see individual corner record.
- ▲ Control Point
- N.F.S.L. National Forest System Land
- OWNER DEED Ownership Information.
- Survey line Posted (USFS signs) and Blazed
- (Italics) 1912 GLO Survey.

Convergence at Cor. No. 1
King Solomon Lode = 0°46'42"
Combined scale factor = 0.99967466

GRAPHIC SCALE



(US FEET / 1 foot = 0.304800609601 meter)
1 inch = 300 ft.

SURVEYOR'S NOTES:

All new BTs have BT (bearing tree) signs, an aluminum nail side center for distance measurement, and a 6 in. red band, painted faces. New BTs at quarter and section corners have LSM (land survey monument) signs. These items were added to existing BTs as needed. A post with LSM sign was placed near the monuments. Unless otherwise noted, bearings and distances to new BTs were measured using a staff compass with tripod, a logger's tape, diameter tape, and clinometer; or a total station. Bearings to BTs at corner not needing new accessories were checked against the record with a hand compass. The declination was determined to be 16° E using the NOAA web site. The distances measured to recovered bearing trees are to the side center of the tree, unless noted otherwise. The record distances to recovered bearing trees were returned by this survey, unless the record was found to exceed the inherent discrepancy expected when allowing for the conversion of links to feet. The record bearings to recovered bearing trees were returned by this survey, unless the record was found to exceed the inherent discrepancy expected when using hand held compasses to verify record calls.

Wallowa Associates P.O. Box 847 Joseph, Oregon 97846 (541)426-9049		
PLUMAS NATIONAL FOREST EMPIRE CADASTRAL SURVEY		
LOCATED WITHIN SEC. 26 & 36, T. 25 N., R. 10E. SEC. 7, 9, 10, 15, 16 & 17, T. 24 N., R. 11 E. Mt. Diablo Meridian, California		
SCALE SCALE	SHEET No. 2 of 9	DATE OF SURVEY Beginning: SEPTEMBER 2004 Ending: NOVEMBER 2004
DRAWN BY ERK DATE 1/2005	CHECKED RW/EK/RC	PROJECT No. WA 1420