

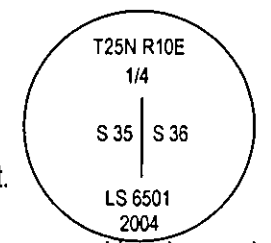
# Record of Survey

## Empire Cadastral Survey

Sec. 25 & 36, T. 25 N., R. 10 E.  
 Sec. 7, 9, 10, 15, 16 & 17, T. 24 N., R. 11 E.  
 Mt. Diablo Meridian, CA

### 7. Quarter Corner Between Sections 35 & 36

**Wm. Minto, GLO, 1880**  
 Set: a granite stone 28 x 14 x 8 in. in stone mound from which bears a:

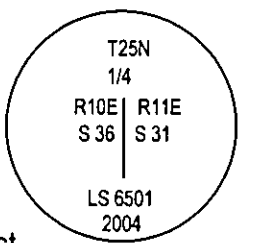


Red fir 20 in. dia., S 10° E, 127 lks. (83.8 ft.) dist.  
**Wallowa Associates, 2004**  
 Found: a granite stone 28 x 16 x 5 ins. standing on one end leaning against the S end of a 4 ft. high boulder in a large boulder patch. Stone is clearly marked "1/4" on the S face. A large rock mound, 2 ft. base x 14 ins. high, surrounds the stone. A 3/4 in. x 18 in. IP (OD) with a wooden dowel and brass washer marked RCE 26870 was along side.  
 At record bearing & distance find the rotted remains of a tree, no scribing found.  
 Set: a 2 in. alum. pipe with a 3/4 in. alum. cap 30 ins. in a rock mound that has a 1/2 ft. base and is 2 1/2 ft. high. Place original stone on the outside edge of mound on SE side standing on end, marks facing in.

A large boulder in a boulder patch bears S 66° E 12.8 ft. marked "X BR".  
 A 5/8" x 30" rebar, 27 ins. in the ground, with a 2 in. alum cap, marked "WA RM LS6501 2004" bears S 7°43'03" E 101.81 ft.  
**State Plane Coordinates, CA Zone 1**  
 N 1880948.31 Ft. E 6891606.84 Ft.

### 8. Quarter Corner Between Sections 36 & 31

**Wm. Minto, GLO, 1880**  
 Set: a granite stone 19 x 13 x 6 in. in stone mound from which bears a:

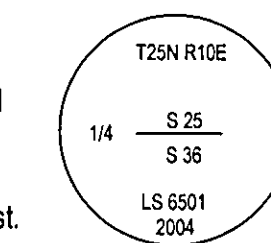


Red fir 22 in. dia., S 35° E, 8 lks. (5.3 ft.) dist.  
 Pitch pine 8 in. dia. N 35° W 28 lks. (18.5 ft.) dist.  
**Wallowa Associates, 2004**  
 Found: an 18 x 11 x 8 ins. granite stone laying on the upper end of a 3 ft. x 2 ft. rock mound, no marks visible. Also found a 3/4 in. x 18 in. IP (OD) in the center of the mound with a wooden dowel and brass washer marked RCE 26870.

A hollow stump, with no marks, bears S 35° E 5.3 ft. (original)  
 A fir, 38 ins. diam., with healed blaze & K-tag dated 1949, bears S 14° E 12.1 ft. (Origin unknown)  
 A sugar pine, 20 ins. diam., with no visible healed blaze or scar, bears N 21° W 15.8 ft. (Record: N 35° W 18.5 ft.)  
 Set: a 3/4 in. x 30 in. alum. drive rod, with 3 1/4 in. alum. cap 12 in. above ground, in the center of the mound to refusal. Build mound 2 1/2 ft. base x 2 ft. high around monument. Lay original stone on S side of mound. Drive 3/4 in. pipe out of sight near monument.  
 A 4 ft. x 4 ft. x 2 ft. high basalt stone marked "X BO" bears S 28° E 20.25 ft.  
 A 5/8 in. x 30 in. rebar, 26 ins. in the ground, with 2 in. alum cap marked "WA RM LS 6501 2004" in a small rock mound bears N 61°51'43" W 192.88 ft.  
**State Plane Coordinates, CA Zone 1**  
 N 1881017.67 Ft. E 6896920.88 Ft.

### 9. Quarter Corner Between Sections 25 & 36

**Wm. Minto, GLO, 1880**  
 Set: a granite stone 20 x 10 x 8 in. in stone mound from which bears a:

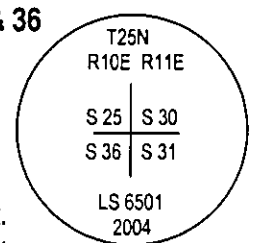


Red fir 15 in. dia., N 35° E, 11 lks. (7.3 ft.) dist.  
 Red fir 8 in. dia., S 12 1/4° E 28 lks. (18.5 ft.) dist.  
**P.D. Hook, USFS, 1955, Corner Card**  
 Found a stone mound in perfect condition, 20 in. above ground, from which bears:  
 A 25 in. W F (white fir) stub N 43° E 7 1/2 ft.  
 A 31 in. R F (red fir) S 15° E 18 ft.

**Wallowa Associates, 2004**  
 Found: a granite stone 20 x 10 x 8 ins. laying on top of a rock mound 3 ft. x 1 1/2 ft. high, clearly marked "1/4". Also found a 3/4 in. x 18" IP (OD) showing 2 ins. above ground with a wooden dowel inserted in the top with a brass washer marked RCE 26870.  
 A very rotten dead & down fir bears N 35° E 7.3 ft. No scribing visible. (Original)  
 A very rotten dead & down fir bears S 12 1/4° E 18.5 ft. No scribing visible. (Original)  
 Set: a 3/4 in. x 30 in. alum. drive rod, with a 3 1/4 in. alum. cap, in a 3 ft. x 2 1/2 high rock mound. Placed original stone on N side of mound face down. Drive pipe out of sight.  
 A 5/8" x 30" rebar, 28 ins. in the ground, with a 2 in. alum. cap marked "WA LS6501" bears N 43°47'26" W 128.94 ft.  
 A large boulder 14 x 9 x 6 ft. high bears N 41 1/2° E 10.65 ft marked "X BR" on SW corner.  
**State Plane Coordinates, CA Zone 1**  
 N 1883694.86 Ft. E 6894195.34 Ft.

### 10. Section Corner Between Sections 25, 30, 31 & 36

**Wm. Minto, GLO, 1880**  
 Set: a granite stone 24 x 14 x 6 in. in stone mound from which bears a:



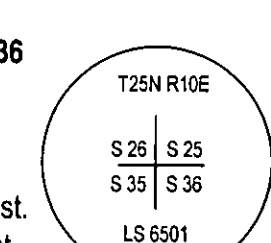
Pitch pine, 8 in. dia., N 35° E 65 lks. (42.9 ft.) dist.  
 Red fir, 26 in. dia., S 43 1/2° E 23 lks. (15.2 ft.) dist.  
 Red fir, 10 in. dia., S 68 1/2° W 57 lks. (37.6 ft.) dist.  
 Red fir, 40 in. dia., N 48° W, 17 lks. (11.2 ft.) lks. dist.  
**Peter M. J. Hirschenberger Jr., USFS, 1953, Corner Card**  
 Found: a rock mound in good condition 2 ft. by 3 1/2 ft. diam. from which:  
 A 38 in. RF (red fir) S 45° E 55 lks. (36.3 ft.) (Sketch shows a blaze area)  
 A 16 in. RF (red fir) S 72° W 24 lks. (15.8 ft.) (Sketch shows a blaze area)  
 A 44 in. RF (red fir) N 35° W 16 lks. (10.6 ft.) (Sketch shows a blaze area)

Metal location poster is on a R F (red fir) 10 in. diam. on the East side of Mason & Hager Road from which this corner bears West 9 1/2 ch.  
**Charlie Brown, USFS, 1979, Corner Card**  
 Found: Metal post in stone mound painted red, from which:  
 A 40 in. RF (red fir) S 34° E 12 ft.  
 A 20 in. WWP S 32° W 42 ft.  
 A 36 in. RF (red fir) N 50° W 36 ft.

**Wallowa Associates, 2004**  
 Found: a granite stone, 24 x 14 x 6 ins., set on edge, no marks visible. Also found a 3/4 in. x 18" IP (OD) showing 1 ins. above ground with a wooden dowel inserted in the top with a brass washer marked RCE 26870.  
 A sugar pine, 26 1/2 ins. diam., no visible blaze, bears N 36° E 40.8 ft. (Record N 35° E 42.9 ft.) Found an old nail while hanging a new BT sign, and realized we had rescribed an original BT "T25N R11E S30 BT" (original)  
 A fir, 40 ins. diam., bears S 42° E 37.7 ft. (Record S 43 1/2° E 15.2 ft.) Nothing was found of the southwest BT.  
 A fir, 40 ins. diam., with healed face, bears N 37° W 12.5 ft. There is evidence of old nails on top of the healed blaze. (Record N 48° W 11.2 ft.)  
 Set: a 3/4 in. x 30 in. alum. breakaway monument with a magnet and a 3 1/4 in. alum. cap. Cap is 6 ins. above ground. Rebuild original mound around cap. Place original stone on top of mound on the N side.  
 A 5/8 in. x 30 in. rebar 28 ins. in the ground with a 2 in. alum. cap marked "WA LS6501 2004" bears S 38°29'24" W 118.79 ft.  
**State Plane Coordinates, CA Zone 1**  
 N 1883687.42 Ft. N 6896922.66 Ft.

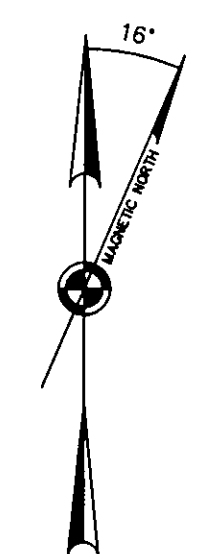
### 11. Section Corner Between Sections 25, 26, 35 & 36

**Wm. Minto, GLO, 1880**  
 Set: a granite stone 20 x 13 x 8 in. in stone mound, from which bears a:

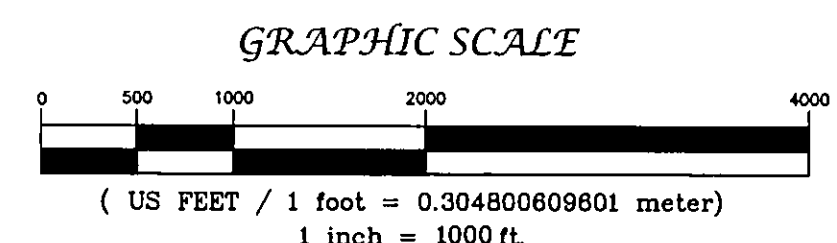


Red fir 13 in. dia., N 26 1/2° E, 220 lks. (145.2 ft.) dist.  
 Red fir 16 ins. dia., S 78 3/4° E, 90 lks. (59.4 ft.) dist.  
 Red fir 15 ins. dia., S 60° W, 132 lks. (87.1 ft.) dist.  
**H.A. Kloppeseburg, USFS, 1949, Corner Card**  
 Found: a mound of rock in place on large boulder in heavy brush. Corner located NE of small lake.  
 All bearing trees are in good condition. One D F and 2 W F trees.

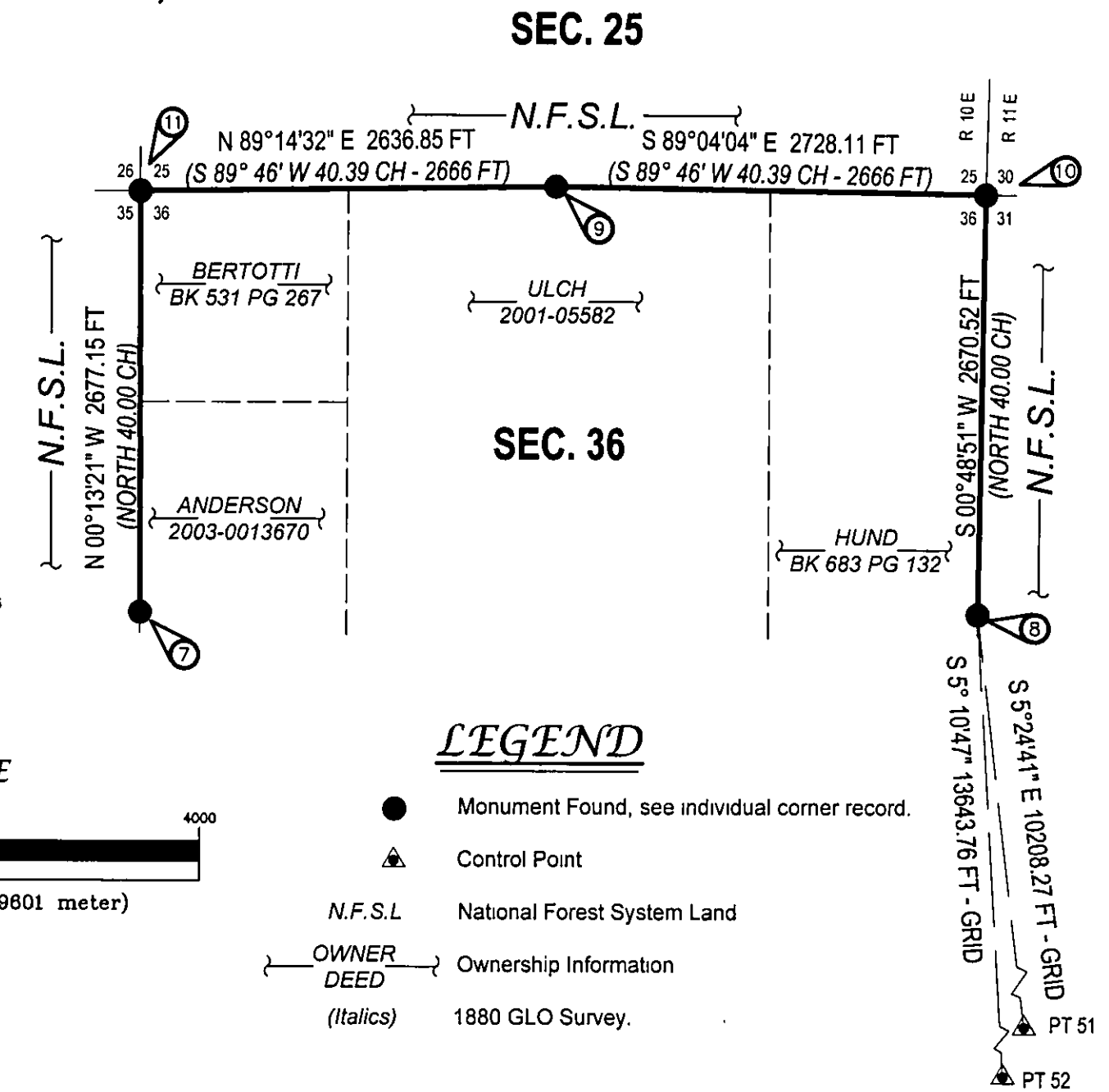
**Wallowa Associates, 2004**  
 Found: a 17 x 12 x 17 in. granite stone in a small mound of stone, no marks. Stone has fracture marks and is starting to fall apart. The mound of stone sits on the N end of a 9 ft. x 6 ft. x 5 ft. high granite boulder.  
 A fir, 46 ins. diam., with healed single blaze, bears N 28 1/2° E 149.0 ft. (Record: N 26 1/2° E 145.2 ft.) (Original BT)  
 A fir, 47 ins. diam., with healed single blaze, bears S 76° E 63.7 ft., (Record: S 78 3/4° E 59.2 ft.) (Original BT)  
 A fir, 38 ins. diam., with single healed blaze, bears S 60° W 84.6 ft. (Record: 87.1 ft.) (Original BT)  
 Set: a 3/4 in. x 30 in. drive rod with magnet, set 20 ins. in the rock with a 3 1/4 in. alum. cap, from which  
 A granite rock 30 x 24 x 30 ins. high chiseled "X BO" bears N 7 1/2° W 52.5 ft.  
**State Plane Coordinates, CA Zone 1**  
 N 1883624.29 Ft. E 6891560.19 Ft.



The Basis of Bearing was derived from GPS observations State Plane Coordinates (CCS83 Zone 1) were calculated and then converted to ground bearing and distances using the given convergence angle and combined scale factor.



### T. 25 N., R. 10 E.



### LEGEND

- Monument Found, see individual corner record.
- ▲ Control Point
- N.F.S.L. National Forest System Land
- OWNER DEED Ownership Information
- (Italics) 1880 GLO Survey.

### NARRATIVE - SECTION 36, T. 25 N., R. 10 E.

**History**  
 1880 - William Minto, GLO, surveyed the East Boundary of the township and subdivided the township.  
 1977 - Tentative Parcel Map for subdivision of four parcels within Section 36. 1 FW 48. No record was found for the worked done by RCE 26870.  
**Procedure**  
 We monumented all of the corners from original evidence.

### SURVEYOR'S NOTES:

All new BTs have BT (bearing tree) signs, an aluminum nail side center for distance measurement, and a 6 in. red band, painted faces. New BTs at quarter and section corners have LSM (land survey monument) signs. These items were added to existing BTs as needed. A post with LSM sign was placed near the monuments.  
 Unless otherwise noted, bearings and distances to new BTs were measured using a staff compass with tripod, a logger's tape, diameter tape, and clinometer; or a total station. Bearings to BTs at corner not needing new accessories were checked against the record with a hand compass. The declination was determined to be 16° E using the NOAA web site.  
 The distances measured to recovered bearing trees are to the side center of the tree, unless noted otherwise. The record distances to recovered bearing trees were returned by this survey, unless the record was found to exceed the inherent discrepancy expected when allowing for the conversion of links to feet. The record bearings to recovered bearing trees were returned by this survey, unless the record was found to exceed the inherent discrepancy expected when using hand held compasses to verify record calls.

<b>Wallowa Associates</b> P.O. Box 847 Joseph, Oregon 97846 (541)426-9049		
<b>PLUMAS NATIONAL FOREST</b> <b>EMPIRE CADASTRAL SURVEY</b>		
LOCATED WITHIN SEC. 26 & 36, T. 25 N., R. 10 E. SEC. 7, 9, 10, 15, 16 & 17, T. 24 N., R. 11 E. Mt. Diablo Meridian, California		
SCALE VARIES	SHEET No. 3 of 9	DATE OF SURVEY Beginning: SEPTEMBER 2004 Ending: NOVEMBER 2004
DRAWN BY ERK DATE 1/2005	CHECKED RW/EK/RC	PROJECT No. WA 1420