

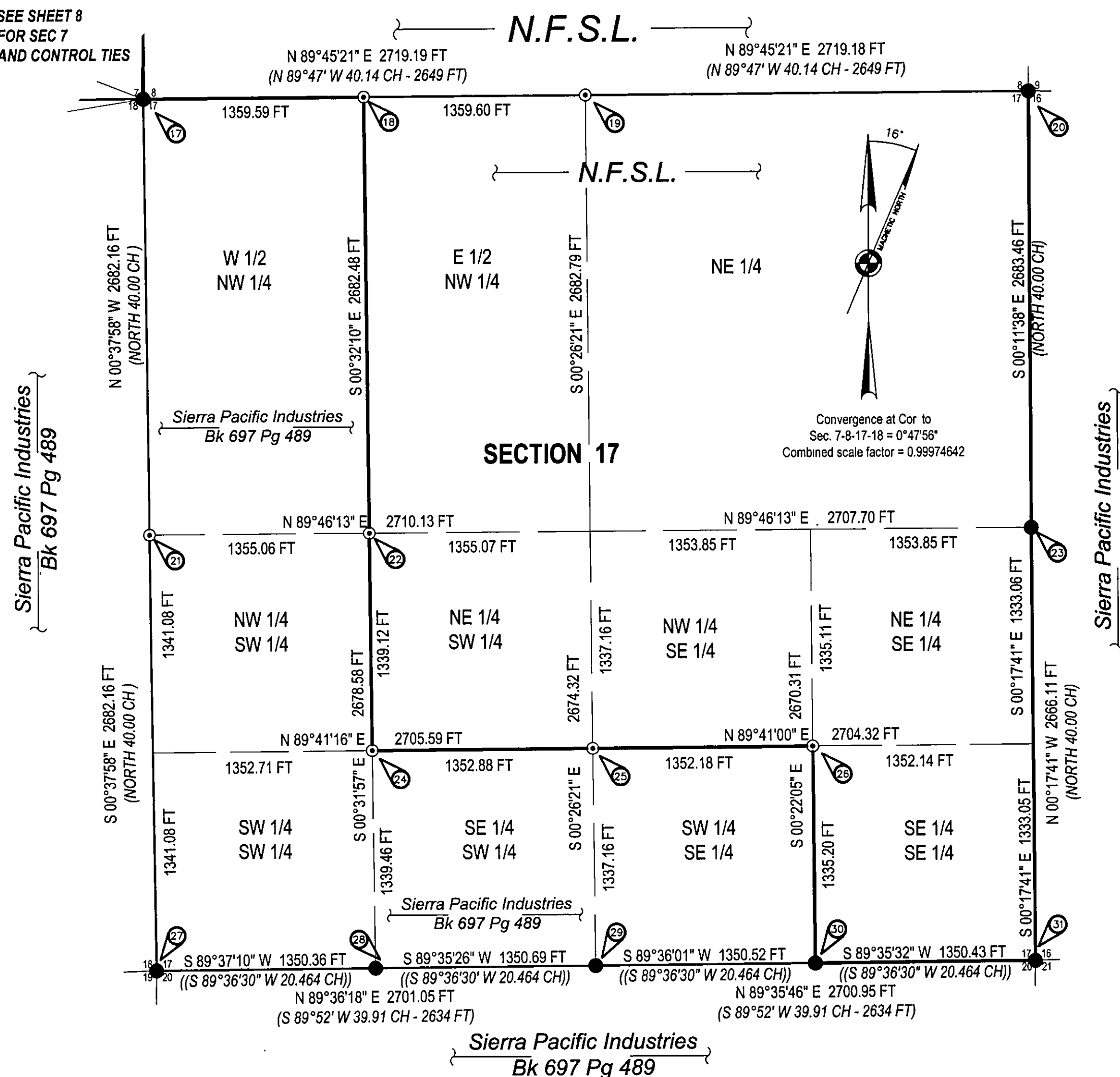
Record of Survey

Empire Cadastral Survey

Sec. 25 & 36, T. 25 N., R. 10 E.
 Sec. 7, 9, 10, 15, 16 & 17, T. 24 N., R. 11 E.
 Mt. Diablo Meridian, CA

T. 24 N., R. 11 E.

SEE SHEET 8
 FOR SEC 7
 AND CONTROL TIES



NARRATIVE - SECTION 17, T. 24 N., R. 11 E.

History

1880 - Wm. Minto, GLO, subdivided the township
 1969 - Adam Sydlik, Cadastral Surveyor, BLM, remonumented several corners in the township.
 1984-87 - BLM Resurvey of the South line of Section 17. They did not find the quarter corner between Sections 17 & 20 and reset the corner by single proportion.

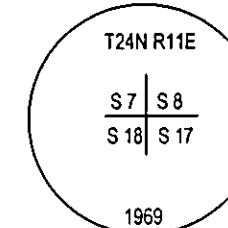
Procedure

After a diligent search we determined that the quarter corners between Sections 8 & 17 and Sections 17 & 18 were lost. These corners were reset by single proportion as per the 1973 BLM Manual. We conducted a search of the quarter corner between Section 17 & 20 that the BLM had determined in 1984 to be lost. We also found no evidence of the original corner. We also tied the sixteen corners between Sections 17 & 20 and found them to be well within acceptable error ellipses.

The subdivision of Section 17 was computed using the standard subdivision procedure of the 1973 BLM Manual.

17. Section Corner Between Sections 7, 8, 17 & 18 Wm. Minto, GLO, 1880

Set: a granite stone 23 x 8 x 5 from which bears a:
 Yellow Pine, 20 ins. dia., N 22° E 40 lks. (26.4 ft.) dist.
 Fir, 14 ins. dia. S 64 1/2° E 17 lks. (11.2 ft.) dist.
 Black oak, 7 ins. dia., S 52° W 13 lks. (8.6 ft.) dist.
 Black oak, 9 ins. dia., N 56° W, 24 lks. (15.8 ft.) dist.



Adam Sydlik, BLM, 1969

Found: an unmarked granite stone, 20 x 8 x 5 ins. (Record: 23 x 8 x 5 ins.) set upright in a small mound of stone, 2 ft. diam., 10 ins. high, from which the remains of the original bearing trees
 A rotted pine stump, bears N 20° E, 42 lks., (27.7 ft.) dist. (Record: N 22° E, 40 lks. (26.4 ft.) dist.)

A fir, 37 ins. diam., bears S 64 1/2° E, 17 lks. (11.2 ft.) dist., with overgrown blaze.
 Set: an iron post, 28 ins. long, 2 1/2 ins. diam., 18 ins. in the round, with brass cap, from which a cedar, 23 ins. diam., bears S 79° W, 53 lks. (35.0 ft.) dist., mkd. T24N R11E S18 BT
 Deposit stone alongside iron post and rebuild the mound of stone, 3 ft. base, around post to top.
Wallowa Associates, 2004

Found: standard 3 1/4 in. BLM brass cap monument, 2 ins. above ground in rock collar.
 A rotted pine stump bears N 20° E 42 lks. (Original)
 A fir snag, 43 ins. diam., alive & healthy with healed blaze bears S 64 1/2° E 17 lks. (Original)
 Nothing found of SW and NW original bearing trees.
 A cedar, 29 ins. in diam., with healed blaze, bears S 79° W, 53 lks.

Set:

A Douglas fir, 16 ins. diam., bears N 15° E 21.9 ft., mkd. "T24N R11E S8 BT".
 A Douglas fir, 14 ins. diam., bears S 77° E 29.7 ft. mkd. "T24N R11E S17 BT".
 A pine, 9 ins. diam., bears N 21° E 29.2 ft. mkd "X BT".

State Plane Coordinates, CA Zone 1
 N 1868496.95 ft. E 6904163.82 ft.

LEGEND

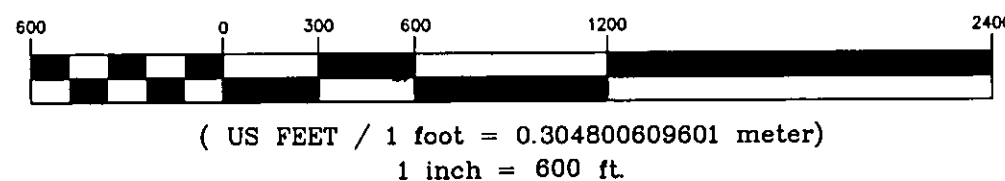
- Monument Found, see individual corner record.
- Monument Set, see individual corner record.
- ▲ Control Point

N.F.S.L. National Forest System Land

OWNER DEED Ownership Information
 (Italics) 1980 GLO Survey
 ((Italics)) 1984-87 BLM Survey

The Basis of Bearing was derived from GPS observations State Plane Coordinates (CCS83 Zone 1) were calculated and then converted to ground bearing and distances using the given convergence angle and combined scale factor.

GRAPHIC SCALE



SURVEYOR'S NOTES:

All new BTs have BT (bearing tree) signs, an aluminum nail side center for distance measurement, and a 6 in. red band, painted faces. New BTs at quarter and section corners have LSM (land survey monument) signs. These items were added to existing BTs as needed. A post with LSM sign was placed near the monuments.

Unless otherwise noted, bearings and distances to new BTs were measured using a staff compass with tripod, a logger's tape, diameter tape, and clinometer; or a total station. Bearings to BTs at corner not needing new accessories were checked against the record with a hand compass. The declination was determined to be 16° E using the NOAA web site.

The distances measured to recovered bearing trees are to the side center of the tree, unless noted otherwise. The record distances to recovered bearing trees were returned by this survey, unless the record was found to exceed the inherent discrepancy expected when allowing for the conversion of links to feet. The record bearings to recovered bearing trees were returned by this survey, unless the record was found to exceed the inherent discrepancy expected when using hand held compasses to verify record calls.

Wallowa Associates
 P.O. Box 847
 Joseph, Oregon 97846
 (541)426-9049

**PLUMAS NATIONAL FOREST
 EMPIRE CADASTRAL SURVEY**

LOCATED WITHIN
 SEC. 26 & 36, T. 25 N., R. 10 E.
 SEC. 7, 9, 10, 15, 16 & 17, T. 24 N., R. 11 E.
 Mt. Diablo Meridian, California

SCALE VARIES	SHEET No 5 of 9	DATE OF SURVEY Beginning: SEPTEMBER 2004 Ending: NOVEMBER 2004
DRAWN BY ERK DATE 1/2005	CHECKED RW/EK/RC	PROJECT No. WA 1420