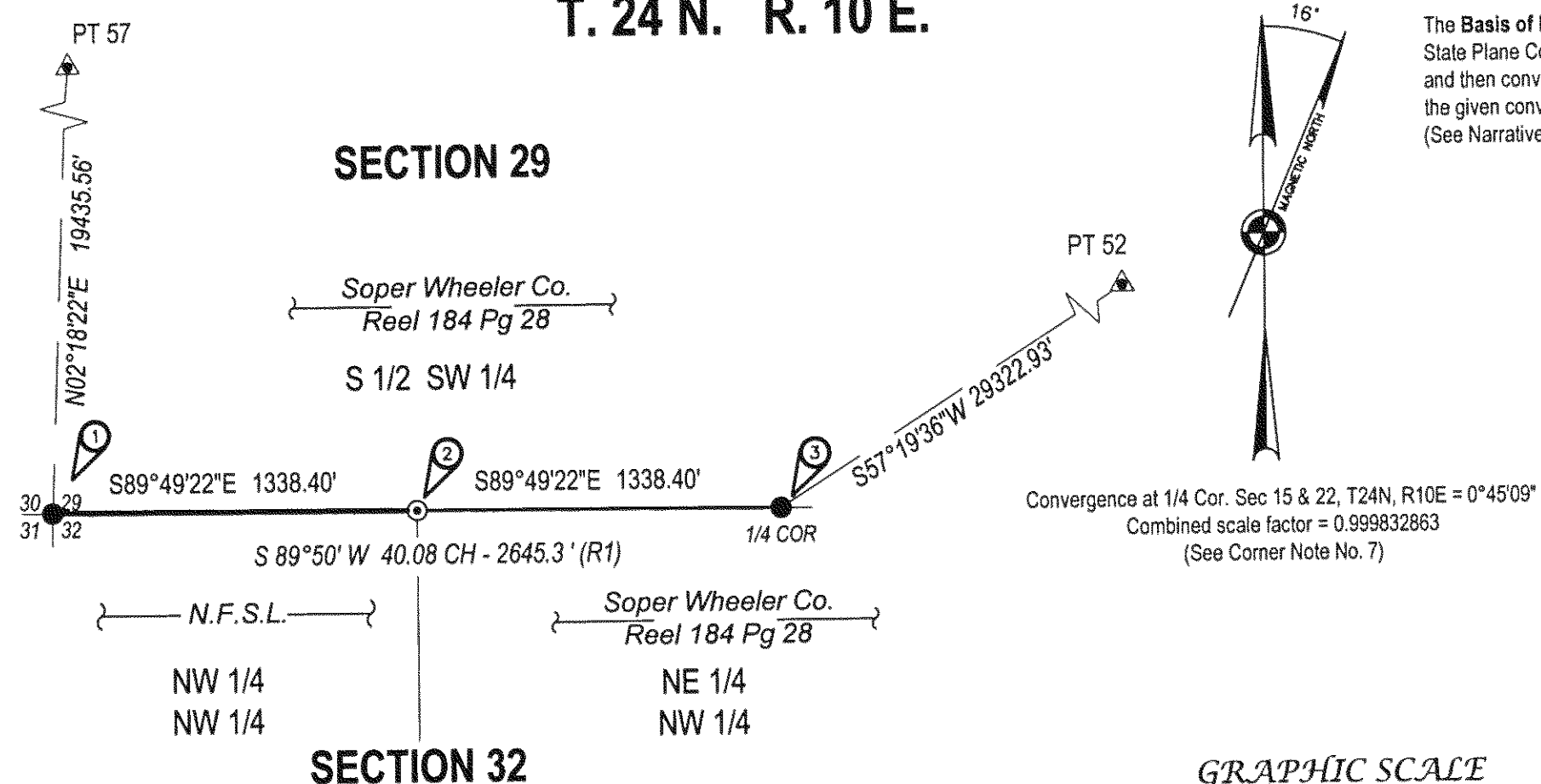


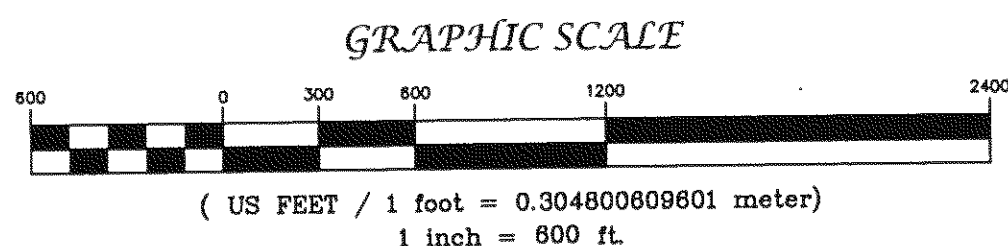
T. 24 N. R. 10 E.



The Basis of Bearing was derived from GPS observations. State Plane Coordinates (CCS83 Zone 1) were calculated and then converted to ground bearing and distances using the given convergence angle and combined scale factor. (See Narrative on Sheet 1)

**LEGEND**

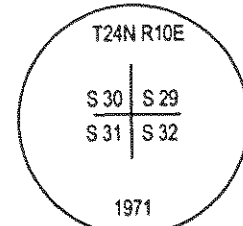
- Monument Found, see individual corner record.
- ⊙ Monument Set, see individual corner record.
- ▲ Control Point
- N.F.S.L. National Forest System Land.
- OWNER DEED Ownership Information
- (R1) 1880 William Minto, GLO



**1. SECTION CORNER BETWEEN SECTIONS 29, 30, 31 & 32**

**Wm. Minto, GLO, 1880**

Set: a cedar post 54 x 5 x 5 ins. from which bears a  
 Fir, 15 ins. diam., N 43° E 22 lks. (14.5 ft.) dist.  
 Fir 10 ins. diam., S 35° E, 22 lks. (14.5 ft.) dist.  
 Fir, 20 ins. diam., S 36° W, 69 lks. (45.5 ft.) dist.  
 Fir, 16 ins. diam., N 52° W, 11 lks. (7.3 ft.) dist.



**Adam Sydlik, BLM, 1969**

Found:  
 A rotted fir stump, bears N 53° E, 22 lks. (14.5 ft.) dist. (Record: N 43° E)  
 A fir, 50 ins. diam., bears S 36° W, 69 lks. (45.5 ft.) dist., open overgrown blaze to old face, with scribe marks BT visible. Annual growth ring count dates to original survey  
 Set: an iron post, 28 ins. long, 2 1/2 ins. diam., 22 ins. in the ground with brass cap mkd. (as shown above). From which:  
 A fir, 8 ins. diam., bears N 20° E, 42 lks. (27.7 ft.) dist. mkd. "T24N R10E S29 BT".  
 A fir, 9 ins. diam., bears S 80° E, 30 lks. (19.8 ft.) dist. mkd. "T24N R10E S32 BT".  
 A fir, 5 ins. diam., bears S 15° W, 40 lks. (26.4 ft.) dist., mkd. "T24N R10E S31 BT".  
 Raise mound of stone, 2 1/2 ft. base, around post to top.

**Rodney D. Dawson, LS 3621, 6 RS 65, 1982**

Found: 1971 BLM brass cap mon. and BTs

A 10 in. fir N 16° E 27.7 ft.  
 A 12 in. fir S 80° E 19.8 ft.  
 A 9 in. fir S 15° W 26.4 ft.  
 Orig. BT, a 52 in. fir S 36° W 45.5 ft.

**Wallowa Associates, 2004**

Found: a standard 3 1/4 in. BLM brass cap, mkd. as shown, flush with a rock collar.  
 From which:

The original 1880 BTs  
 No trace of the original NE BT  
 No trace of the original SE BT  
 A dead & standing fir, 54 ins. in diam., with open blaze bears S 36° W 69 lks.  
 No trace of the original NW BT  
 The 1969 BTs  
 A fir, 15 ins. in diam., alive & healthy, with healed blaze bears N 16° E 27.7 ft. (1982 Record)

A fir, 20 ins. in diam., alive & healthy, with healed blaze bears S 80° E 30 lks.  
 A fir, 17 ins. in diam., alive & healthy, with healed blaze bears S 15° W 40 lks.

**State Plane Coordinates, CA Zone 1 (NAD83)**  
 N 1851252.66 Ft. N 6871007.65 Ft.

**SURVEYOR'S NOTES:**

All new BTs have BT (bearing tree) signs, an aluminum nail side center for distance measurement, and a 6 in. red band, painted faces. New BTs at quarter and section corners have LSM (land survey monument) signs. These items were added to existing BTs as needed. A post with LSM sign was placed near the monuments.

Unless otherwise noted, bearings and distances to new BTs were measured using a Warren Knight staff compass with tripod, a logger's tape, diameter tape, and clinometer. Bearings to BTs at corner not needing new accessories were checked against the record with a hand compass. The declination was determined to be 16° E using the NOAA web site.

Record and measured distances to BTs are to the side center of tree unless otherwise noted.

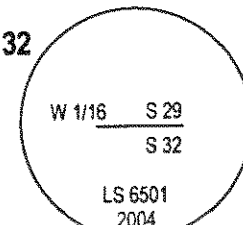
**2. WEST SIXTEENTH CORNER BETWEEN SECTIONS 29 & 32**

**Wallowa Associates, 2004**

Set: a 3/4 in. x 30 in. drive rod, with breakaway base & magnet, driven 28 ins. in the ground with a 3 1/4 in. aluminum cap mkd.  
 From which

A red fir, 12 ins. diam., bears South 11.7 ft., marked W 1/16 S32 BT.  
 A white fir, 26 ins. diam., bears N 55 1/4° W 9.5 ft., marked W 1/16 S29 BT.

**State Plane Coordinates, CA Zone 1 (NAD83)**  
 N 1851266.08 Ft. N 6872345.77 Ft.



**3. QUARTER CORNER BETWEEN SECTIONS 29 & 32**

**Wm. Minto, GLO, 1880**

Set: a fir post 48 x 3 x 3 ins. from which bears a  
 Pitch pine, 30 ins. diam., N 50° E 37 lks. (24.4 ft.) dist.  
 Cedar, 16 ins. diam., S 26° W, 19 lks. (12.5 ft.) dist.

**Adam Sydlik, BLM, 1969**

Found: a small embedded mound of stone, 2 ft. dia., 4 ins. high, from which the remains of the original bearing trees  
 A sawed pine stump, 50 ins. diam., bears N 50° E, 37 lks. (24.4 ft.) dist., open overgrown blaze to old face, with scribe marks 1/4 S visible. Annual growth ring count dates to original survey.  
 A cedar root crown bears S 26° W, 19 lks. (12.5 ft.) dist., with log alongside with old rotted blaze

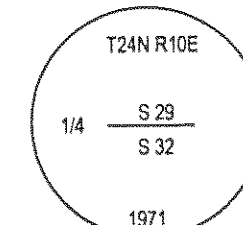
Set: an iron post, 28 ins. long, 2 1/2 ins. diam., 22 ins. in the ground with brass cap mkd. (as shown). From which  
 A yellow pine, 11 ins. diam., bears S 61° E, 79 lks. (52.1 ft.) dist. mkd. "1/4 S32 BT".  
 A cedar, 15 ins. diam., bears N 49° W, 124 lks. (81.8 ft.) dist. mkd. "1/4 S29 BT".  
 Rebuild mound of stone, 2 ft. base, around post top.

**Wallowa Associates, 2005**

Found: A standard 3 1/4 ins. BLM brass cap mkd. as shown, 4 ins. above ground.  
 From which

The original 1880 BTs  
 A sawn pine stump, 30 ins. in diam., with chops marks but no scribing or face visible, bears N 50° E 37 lks.  
 Cedar fragments, no scribing, bears S 26° W 19 lks.  
 The 1969 BTs  
 A ponderosa pine, 27 ins. in diam., bears S 61° E 79 lks. with healed face.  
 A cedar, 25 ins. in diam., bears N 49° W 124 lks., with healed face.

**State Plane Coordinates, CA Zone 1 (NAD83)**  
 N 1851279.51 Ft. E 6873683.89 Ft.



**4. WITNESS QUARTER CORNER SECTIONS 16 & 17**

**Arthur W. Keddie, GLO, 1871**

Set: a post, from which  
 A pitch pine 37 ins. diam., bears S 48 1/4° E, 57 lks. (37.6 ft.)  
 A pitch pine 32 ins. diam., bears N 42 1/4° W, 114 lks. (75.2 ft.)

**John C. Simpson, RCE 11173, 3 RS 70, 1966**

West quarter corner 16 was called lost, but not set.

**Gerald C. Henderson LS3297, 5 PM 134, 1977**

Found: a 1 1/4 in. IP, RCE 11173, stamped 1/4, T-bar marker proj. 1.5".

**Richard A. Lundy, RCE15265, 1980**

Found: a 1 1/2 in. IP tagged RCE 11173 per 3 PM 65.

**7 RS 121 - 1987 - William Snow, USFS,**

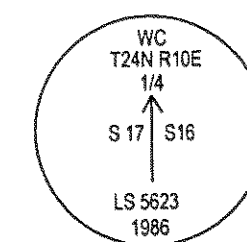
Found: nothing, single proportioned corner but set witness corner 404.59 south of corner, mkd. as shown above.

**Wallowa Associates, 2004**

Found: a U.S.F.S. alum. monument with a 3 1/4" alum. cap, mkd. as shown, up 4 ins. above the ground. (Searched for but did not find the I.P. from earlier surveys.) From which

A cedar, 9 ins. diam., bears S 17° E 13.3 ft., scribed BT on a single open blaze. Tree has a snow blaze and appears to be sickly.  
 A white fir snag, 12 ins. diam., bears S 46° W 7.8 ft. with BT scribing visible. Snag is 5 1/2 ft. tall.

**State Plane Coordinates, CA Zone 1 (NAD83) at witness corner monument**  
 N 1864181.89 Ft. E 6876407.08 Ft.



**5. CENTER QUARTER CORNER SECTION 16**

**Gerald C. Henderson, LS 3297, 5 PM 134, 1977**

Set: rebar with plastic cap LS 3297

**Wallowa Associates, 2004**

Found: 1/2 in. rebar with decaying plastic cap, only the numbers 3, 2 & 7 were still visible.

**State Plane Coordinates, CA Zone 1 (NAD83)**

N 1864553.73 Ft. E 6879061.45 Ft.

**6. CENTER-EAST SIXTEENTH CORNER SECTION 16**

**Gerald C. Henderson, LS 3297, 5 PM 134, 1977**

Set: rebar with plastic cap LS 3297

**Wallowa Associates, 2004**

Found: a 1/2 in. rebar in rock collar, 2 in. showing above the ground with a YPC marked LS 3297

**State Plane Coordinates, CA Zone 1 (NAD83)**

N 1864535.71 Ft. E 6880420.00 Ft.

**Record of Survey**

**Empire Cadastral Survey**

Sec. 21, 22 & 26, T. 25 N., R. 9 E.

Sec. 15, 16, 22, 26, 29 & 32, T. 24 N., R. 10E.

Mt. Diablo Meridian, California

**NARRATIVE - SECTION LINE BETWEEN 29 & 32**

**History**

1880 - Wm. Minto, GLO, subdivided the township  
 1969 - Adam Sydlik, Cadastral Surveyor, BLM, remonumented several corners in the township.

1982 - Rodney D. Dawson, LS 3621, 6 RS 65, tied the northwest corner of Section 32

**Procedure**

We found the controlling corners as per the 1969 BLM record and set the West Sixteenth corner at the midpoint as per the 1973 BLM Manual.

**7. QUARTER CORNER BETWEEN SECTIONS 15 & 16**

**Arthur W. Keddie, GLO, 1871**

Set: a post, from which

A pitch pine 18 ins. diam., bears S 7 3/4° W, 46 lks. (30.4 ft.)

No other trees convenient to mark.

**O. Brown, Corner Card 1970**

Found: large stone mound w/ 1/2 in. I.P. & LS 2322 tag (Sargent) Also large target at cor. Found also a large mound south 45 lks. w/ stake.

A local BT 11 1/2 in. B.O. (Black oak) SE 7 lks. (4.6 ft.) mkd. 1 1/4 S RP.

Alum. K tag on down oak post mkd old mound,

BT SW destroyed by fire

Set: attn. signs BT tag & paint local BT

**Gerald C. Henderson, LS 3297, 5 PM 134, 1977**

Found: 3/4 in. IP LS2322, MD Stone

10 in. oak w/ K tag S 30° E 4.5 ft.

**William G. Snow, LS 5623, 8 RS 65, 1989**

Found: 3/4 in. I.P. LS 2322 (5 PM 134)

**Wallowa Associates, 2004**

Found: a 1 in. x 24 in. iron pipe 6 ins. above ground in rock mound, with washer marked LS 2322. From which

A black oak, 10 ins. diam., alive but not healthy, bears N 17° E 34.8 ft., with BT signs and possible healed blazes.

A black oak, alive, but not healthy, bears S 66° E 4.5 ft., with open blaze and 1/4 S visible.

A black oak with attention sign, no marks.

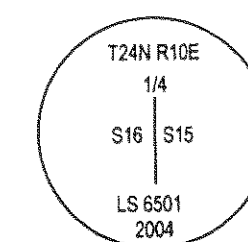
Set: a 3/4 in. x 30 in. alum. drive rod with 3 1/4 in. alum. cap mkd. as shown above. Drove 1 in. iron pipe upside down & flush with ground, alongside & to the west of the new monument. From which

A pine, 9 ins., diam., bears S 83° W 86.2 ft., marked X BT.

A pine, 10 ins. diam., bears N 60 1/2° W 57.8 ft., marked 1/4 S16 BT.

**State Plane Coordinates, CA Zone 1 (NAD83)**

N 1864518.05 Ft. E 6881777.07 Ft.



<p><b>Wallowa Associates</b>                  P.O. Box 847                  Joseph, Oregon 97846                  (541)426-9049</p>		
<p><b>PLUMAS NATIONAL FOREST</b>  <b>EMPIRE CADASTRAL SURVEY</b></p>		
<p>LOCATED WITHIN                  SEC. 21, 22 &amp; 26, T. 25 N., R. 9 E.                  SEC. 15, 16, 22, 26, 29 &amp; 32, T. 24 N., R. 10E.                  Mt. Diablo Meridian, California</p>		
SCALE VARIES	SHEET No. 2 of 10	DATE OF SURVEY Beginning: NOVEMBER 2004 Ending: May 2006
DRAWN BY ERK DATE 6/2005	CHECKED RW/EK/RC	PROJECT No. WA 1420