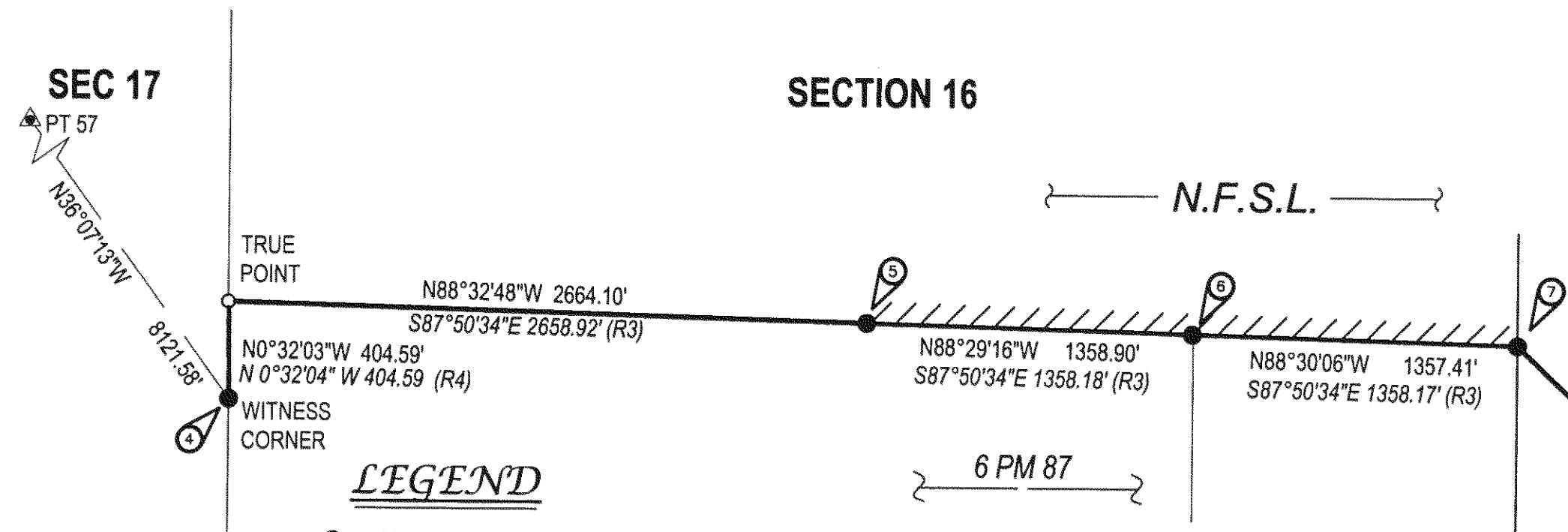


T. 24 N. R. 10 E.

Record of Survey

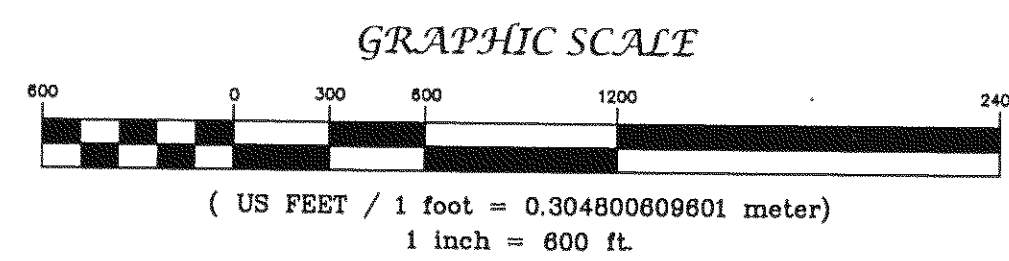
Empire Cadastral Survey

Sec. 21, 22 & 26, T. 25 N., R. 9 E.
Sec. 15, 16, 22, 26, 29 & 32, T. 24 N., R. 10 E.
Mt. Diablo Meridian, California



Convergence at 1/4 Cor. Sec. 15 & 22, T24N, R10E = 0°45'09\"/>

The Basis of Bearing was derived from GPS observations. State Plane Coordinates (CCS83 Zone 1) were calculated and then converted to ground bearing and distances using the given convergence angle and combined scale factor.



LEGEND

- Monument Found, see individual corner record.
Monument Set, see individual corner record.
Control Point
Calculated Position
N.F.S.L. National Forest System Land.
Ownership Information
Survey line posted (USFS signs) and blazed

NARRATIVE - SECTION 16, T24N R10E

History
1871 - Arthur W. Keddie, GLO, subdivided a portion of the township
1880 - Wm. Minto, GLO, subdivided the remainder of the township
1977 - Gerald C. Henderson, LS 3297, 5 PM 134, subdivided Section 16, and set the C 1/4 and the CE 1/16.
1986 - William G. Snow, LS 5623, 7 RS 121, reset the 1/4 corner between sections 16 & 17 as a witness corner.
Procedure
We found the center 1/4, center-east 1/16 and east quarter corner for Section 16 as set by Henderson in 1977. We did not find the iron pipe found by Henderson in 1977. We tied the witness corner for the 1/4 corner between sections 16 & 17 set by Snow in 1986. Since Henderson subdivisional corner were in the ground since 1977 and he properly set them, we accepted them as found.

8. QUARTER CORNER SECTIONS 15 & 22

Arthur W. Keddie, GLO, 1871
Set: a post in mound of rock, from which
A black oak 12 ins. diam., bears N 16 1/2° E, 126 lks. (83.2 ft.)
No other trees convenient to mark.

Wm. Minto, GLO, 1880
Found: no quarter corner.

Set: a granite stone 22 x 10 x 4 ins., from which
A sugar pine, 26 ins. diam., N 17 1/2° W, 105 lks. (69.3 ft.) dist.
A black oak, 12 ins. diam. S 75° E, 54 lks. (35.6 ft.) dist.

O. Brown, USFS Corner Card, 1970
Found: 19 x 10 x 4 ins. stone possible 1/4 carved & IP w/ LS2322 tag (Sargent) & mound.
8 ft. high pine stump N 15° W 115 lks. Blaze on ground w/ 1/4 S BT
SE Oak missing.

James F. Flanagan, RCE 292, 3 PM 1, 1970
Found: 1 in. I.P. in rock mound with tag LS 2322
original witness tree stump at N 15° W 68.4 ft.
One new witness tree 6 in. diam. oak S 84° E 50 ft.

L.J. Brock, RCE 13528, 5 PM 106, 1976
Found: I.P., LS 2322
Pine stump N 15° W 115 lks. (75.9 ft.)

Wallowa Associates, 2004
Found: a 1 in. iron post 7 ins. above ground in a rock collar with tag stamped LS 2322.
From which:

The 1880 BTs
A 12 in x 8 ft. high pine stump bears N 15° W with loose piece of wood at base with scribing visible, & axe marks.
The SE BT is gone.
The 1970 BTs
A 10 in. black oak, alive & healthy, bears S 84° E 59.8 ft. with open blaze, axe marks, but no scribing visible.

Set: A 3/4 in. x 30 in. aluminum drive rod with magnet in base, with 3 1/4 in. alum. cap mkd. as shown above, in rock mound. Buried 1 in. iron pipe upside down on East side.
From which:

A black oak, 5 ins. diam., bears N 40° E 29.7 ft. marked X BT.
State Plane Coordinates, CA Zone 1 (NAD83)
N 1862059.02 Ft. E 6884433.18 Ft.

9. SECTION CORNER BETWEEN SECTIONS 14, 15, 22 & 23

Wm. Minto, GLO, 1880
Set: a granite stone 28 x 14 x 12 ins., from which
A sugar pine, 18 ins. diam., bears N 53 3/4° E, 17 lks. (11.2 ft.)
A black oak, 20 ins. diam, bears S 42 1/4° E, 56 lks. (37.0 ft.)
A black oak, 8 ins. diam., bears S 10 1/2° W, 33 lks. (21.8 ft.)
A black oak, 10 ins. diam., bears N 70 1/2° W, 22 lks. (14.5 ft.)

Adam Sydlilik, BLM, 1971
Found: a granite stone, 20 x 12 x 10 ins. mkd. With 3 notches on the S and 2 notches on the E edges (Record: 28 x 14 x 12 ins.), set in an old embedded mound of stone, 3 ft. diam., 10 ins. high, from which the remains of the original bearing trees
A pine 21 ins. diam., bears N 55° E, 17 lks. (11.2 ft.) dist., open overgrown blaze to old face, with scribe marks SIXV visible. Annual growth ring count dates to original survey. (Record: N 53 3/4° E)
A black oak, 20 ins. diam., bears S 42 1/4° E 56 lks. (37.0 ft.) dist., with overgrown blaze.

A black oak root crown, bears S 10 1/2° W, 33 lks. (21.8 ft.) dist., with rotted log alongside, with old blaze visible.
A stump hole, bears N 70 1/2° W, 22 lks. (14.5 ft.) dist.
Set: an iron post, 28 ins. long, 2 1/2 ins. diam., 22 ins. in the ground, with brass cap mkd. (as shown above), from which
A yellow pine, 28 ins. diam., bears S 41° W, 72 lks. (47.5 ft.) dist. mkd. T24N R10E S22 BT.

A black oak, 6 ins. diam., bears N 59° W, 85 lks. (56.1 ft.) dist., mkd. T24N R10E S15 BT.
Rebuild mound of stone, 3 ft. base, around post to top; deposit mkd. Stone in mound.

L. J. Brock, RCE 13528, 5 PM 106, 1976
Found: BLM cap
21 in. P.P. N 52° E 19.5 lks (12.9 ft.)
21 in. Oak S 43 3/4° E 56.5 lks. (37.3 ft.)
Oak stump S 9 1/2° W 31 lks. (20.5 ft.)
(continued next column)

9. SECTION CORNER BETWEEN SECTIONS 14, 15, 22 & 23 (CONTINUED)

Mark D. Filsinger, LS 4976, 7 RS 103-5, 1986
Found: 3 1/4 in. brass cap in M.O.S.

23 in. Y. pine with blaze and scribing "XV" visible N 52° E 11.8 ft. (18 in. S. pine N 53 3/4° E 17 lks. (11.2 ft.) - GLO)
20 in. B. oak with healed blaze S 42 3/4° E 37.1 ft. (20" B. oak S 42 1/2° E 56 lks. (37.0 ft.) - GLO)
B. Oak stump hole S 11° W 20.7 ft. (8 in. B. oak S 10 1/2° W 33 lks. (21.8 ft.) - GLO)
Stump hole N 68 1/2° W 15.1 ft. (10 in. B. oak N 70 1/2° W 22 lks. (14.5 ft.) - GLO)
28 in. Y. pine with blaze and scribing visible S 41° W 46.9 ft. (28 in. Y. pine S 41° W 72 lks. (47.5 ft.) - BLM)
6 in. B. oak with blaze and scribing visible N 59° W 55.3 ft. (6 in. B. oak N 59° W 85 lks. (56.1 ft.) - BLM)
12 in. Y. pine with blaze and scribing visible S 16 1/2° E 25.3 ft. (No record)

Wallowa Associates, 2004
Found: a standard BLM brass cap mkd. as shown, 3 ins. above ground in a 2 1/2 ft. x 2 1/2 ft. x 6 in. high rock mound. From which

The 1880 BTs
A ponderosa pine, 23, ins. diam., bears N 53 3/4° E 17 lks. open with scribing visible.
A black oak snag, 20 ins. diam., bears S 42 1/4° E 56 lks., with healed face. Tree is hollow, there appears to be a face inside, no marks seen.
The original SW BT is gone
The original NW BT is gone.

The 1971 BTs
A ponderosa pine, 31 ins. diam., bears S 41° W 46.9 ft. (Record: 72 lks.), most of the scribing is visible.
A black oak, 10 ins. diam., bears N 59° W 55.3 ft. (Record: 85 lks.) with healed blaze.
Origin unknown BTs
A ponderosa pine, 14 ins. diam., S 16 1/2° E 25.3 ft., with healed blaze.

State Plane Coordinates CA Zone 1 (NAD83)
N 1862049.72 Ft. E 6886743.42 Ft.

SIERRA PACIFIC INDUSTRIES
Bk 697 Pg 489

SECTION 15

SECTION 22

NARRATIVE - SECTIONS 15 & 22, T24N R10E

History
1871 - Arthur W. Keddie, GLO, subdivided a portion of the township
1880 - Wm. Minto, GLO, subdivided the remainder of the township
1970 - James F. Flanagan, RCE 292, 3 PM 1, subdivided a portion of Section 22 and found & tied the 1/4 between Sections 15 & 22.
1972 - H. Nierhake, LS 2469, subdivided a portion of Section 22 and found & tied the 1/4 between Sections 15 & 22.
1976 - L.J. Brock, RCE 13528, 5 PM 106, surveyed the east half of the line between Sec 15 & 22.
1986 - Mark D. Filsinger, LS 4976, 7 RS 103-5, tied the southeast corner of Section 15
Procedure
We found the quarter corner and section corner as per the record. We remonumented the quarter corner to U.S.F.S. standards.

Wallowa Associates
P.O. Box 847
Joseph, Oregon 97846
(541)426-9049

PLUMAS NATIONAL FOREST
EMPIRE CADASTRAL SURVEY

LOCATED WITHIN
SEC. 21, 22 & 26, T. 25 N., R. 9 E.
SEC. 15, 16, 22, 26, 29 & 32, T. 24 N., R. 10 E.
Mt. Diablo Meridian, California

Table with 3 columns: SCALE, SHEET No., DATE OF SURVEY, DRAWN BY, CHECKED, PROJECT No.