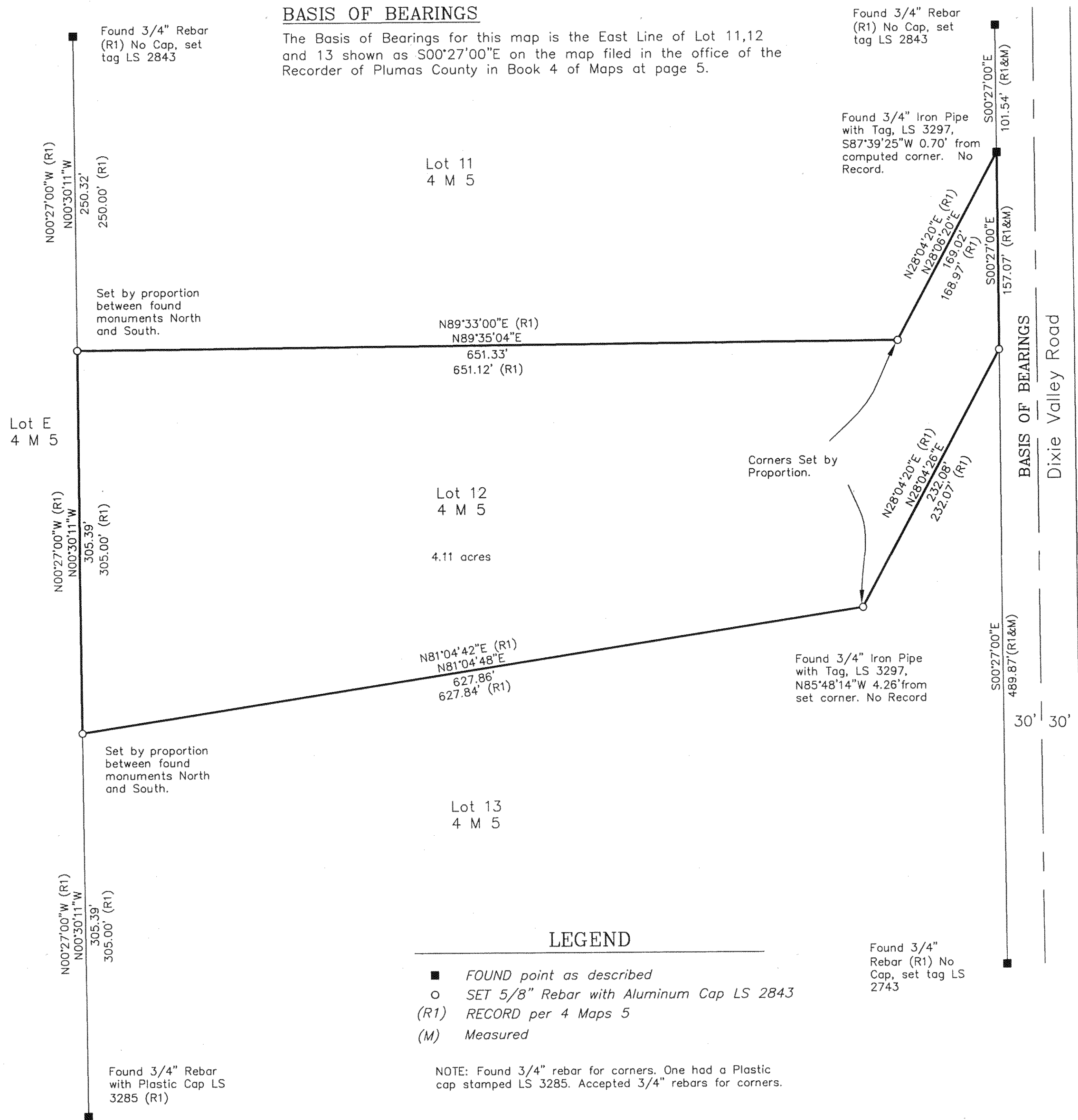


**BASIS OF BEARINGS**

The Basis of Bearings for this map is the East Line of Lot 11,12 and 13 shown as S00°27'00"E on the map filed in the office of the Recorder of Plumas County in Book 4 of Maps at page 5.



Found 3/4" Rebar (R1) No Cap, set tag LS 2843

Found 3/4" Iron Pipe with Tag, LS 3297, S87°39'25"W 0.70' from computed corner. No Record.

Found 3/4" Iron Pipe with Tag, LS 3297, N85°48'14"W 4.26' from set corner. No Record

Found 3/4" Rebar (R1) No Cap, set tag LS 2743

- LEGEND**
- FOUND point as described
  - SET 5/8" Rebar with Aluminum Cap LS 2843
  - (R1) RECORD per 4 Maps 5
  - (M) Measured

NOTE: Found 3/4" rebar for corners. One had a Plastic cap stamped LS 3285. Accepted 3/4" rebars for corners.

**SURVEYOR'S STATEMENT**

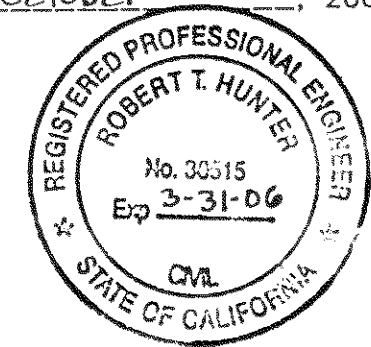
This map correctly represents a survey made by me or under my direction in conformance with the requirements of the Professional Land Surveyors' Act at the request of Mary Elizabeth Farrell in August, 2005.



*John W. Hamby*  
John W. Hamby LS 2843  
License Exp. 6-30-06

**COUNTY SURVEYOR'S STATEMENT**

This map has been examined in accordance with Section 8766 of the Professional Land Surveyors' Act this 5<sup>th</sup> day of October, 2005.

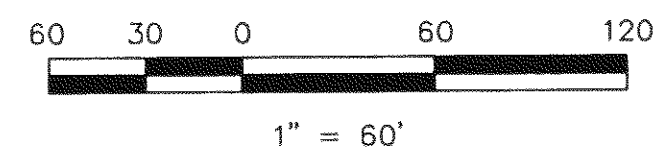


*R. Tom Hunter*  
R. Tom Hunter RCE 30515  
PLUMAS COUNTY SURVEYOR  
License Expiration Date 3/31/06

**RECORDER'S STATEMENT**

Filed this 5<sup>th</sup> day of October, 2005 at 10:55 am. in Book 13 of Record of Surveys, at page 134, at the request of the County Surveyor.

Fee: 8.00  
Document No. 2005 - 10 774  
Kathleen Williams  
County Recorder  
By: *Melinda Roehn*  
Deputy



**RECORD OF SURVEY**  
for  
**Mary Elizabeth Farrell**

Lot 12 Dixie Valley Properties, Unit 1, 4 Maps 5 within Section 6, T. 24 N., R. 15 E., M.D.M.

Plumas County ~ California  
Scale 1" = 60' August, 2005

Hamby Surveying Inc.  
P.O. Box 1209  
Portola, CA 96122  
(530) 832-5571