

FOUND MONUMENTS					
SEC	PT	NORTH	EAST	DESCRIPTION	BK OF PG
16	1	67520.882	705643.293	1 inch O.D.I.P. in a M.O.R. w/tag "LS2587"	Not of Record
17	1	67528.063	704827.238	1-3/4 inch O.D.I.P. in M.O.R.	4 RS 126
20	18	67361.009	705075.908	6" X 6" Concrete R/W Mon.	4 RS 126
20	19	67391.008	705110.276	6" X 6" Concrete R/W Mon.	4 RS 126
20	A	67419.714	705130.091		4 RS 126
20	B	67428.427	705109.858		4 RS 126
20	C	67451.041	705033.357		4 RS 126
20	D	67446.736	704991.778		4 RS 126

CONTROL MONUMENTS			
PT	NORTH	EAST	DESCRIPTION
CM 46.4	67470.942	704825.372	3/4 inch rebar with 1-1/2 inch aluminum cap stamped "CALTRANS CM 46.4"
CM 46.5	67487.047	704977.846	3/4 inch rebar with 1-1/2 inch aluminum cap stamped "CALTRANS CM 46.5"
CM 46.6	67442.540	705170.746	3/4 inch rebar with 1-1/2 inch aluminum cap stamped "CALTRANS CM 46.6"
CM 46.8	67309.495	705444.846	3/4 inch rebar with 1-1/2 inch aluminum cap stamped "CALTRANS CM 46.8"

LEGEND	
■	FOUND R/W MONUMENT per 4 RS 119-126 T-BAR WITH TAG
□	SET 3/4 INCH REBAR W/STD.CALTRANS ALUMINUM CAP STAMPED "CALTRANS R/W"
●	MONUMENT FOUND AS NOTED
[]	RECORD DOCUMENTS
◆	U.S.P.L.S. CORNER FOUND AS NOTED
◇	U.S.P.L.S. CORNER NOT LOCATED
△	CALTRANS CONTROL LINE MONUMENT
--	OLD R/W LINE
16-X	CALTRANS "CADASTRAL CARD" NO.

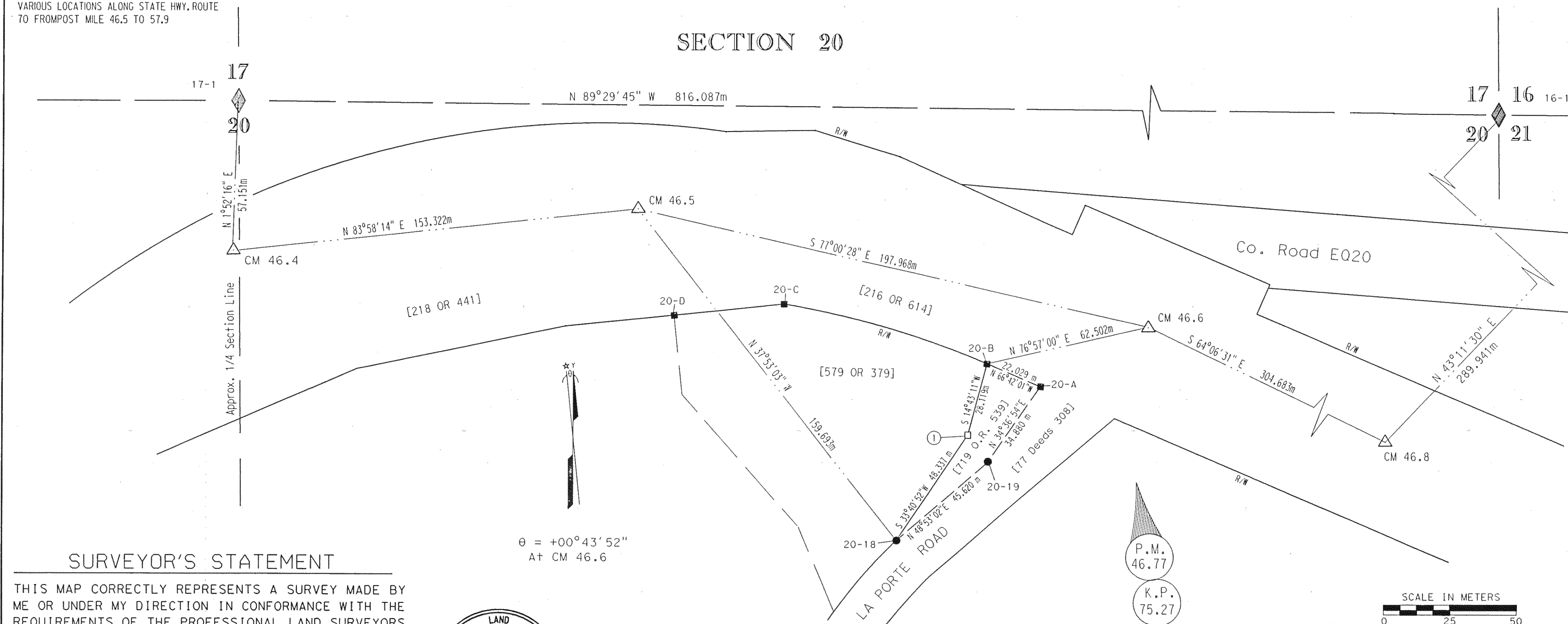
MONUMENTS SET		
No.	NORTH	EAST
(1)	67401.231	705102.714

NOTE:

THE PURPOSE OF THIS SURVEY IS TO MONUMENT STATE HIGHWAY RIGHT OF WAY ACQUIRED AT VARIOUS LOCATIONS ALONG STATE HWY. ROUTE 70 FROM POST MILE 46.5 TO 57.9

T. 24 N., R. 10 E., M.D.M.

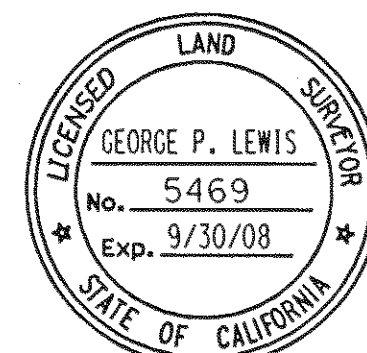
SECTION 20



SURVEYOR'S STATEMENT

THIS MAP CORRECTLY REPRESENTS A SURVEY MADE BY ME OR UNDER MY DIRECTION IN CONFORMANCE WITH THE REQUIREMENTS OF THE PROFESSIONAL LAND SURVEYORS ACT AT THE REQUEST OF DEPARTMENT OF TRANSPORTATION IN DECEMBER OF 2006

(SIGNED AND SEALED) George P. Lewis
L.S. No. 5469
LICENSE EXPIRATION DATE 9/30/08



BEARINGS AND DISTANCES ARE BASED ON THE CALIFORNIA COORDINATE SYSTEM OF 1927, ZONE 1. DIVIDE DISTANCES BY 0.9998500 TO OBTAIN GROUND LEVEL DISTANCES. DISTANCES ARE EXPRESSED IN METERS UNLESS OTHERWISE NOTED. MULTIPLY DISTANCES EXPRESSED IN METERS BY 3937/1200 TO OBTAIN DISTANCES EXPRESSED IN U.S. SURVEY FEET.

SUPPLEMENTARY INFORMATION MAY BE OBTAINED FROM THE DISTRICT OFFICE, SURVEY DEPARTMENT OR RIGHT OF WAY ENGINEERING DEPARTMENT, 1657 RIVERSIDE DRIVE, REDDING, CA.

COUNTY SURVEYOR'S STATEMENT

THIS MAP HAS BEEN EXAMINED IN ACCORDANCE WITH SECTION 8766 OF THE PROFESSIONAL LAND SURVEYORS ACT THIS 4th DAY OF March, 2008

ROBERT T. HUNTER R. Tom Hunter
R.C.E. 30515 PLUMAS COUNTY SURVEYOR

LICENSE EXPIRES: 3/31/2010

RECORDER'S STATEMENT

FILED THIS 13th DAY OF March, 2008
AT 11:44 A.M.

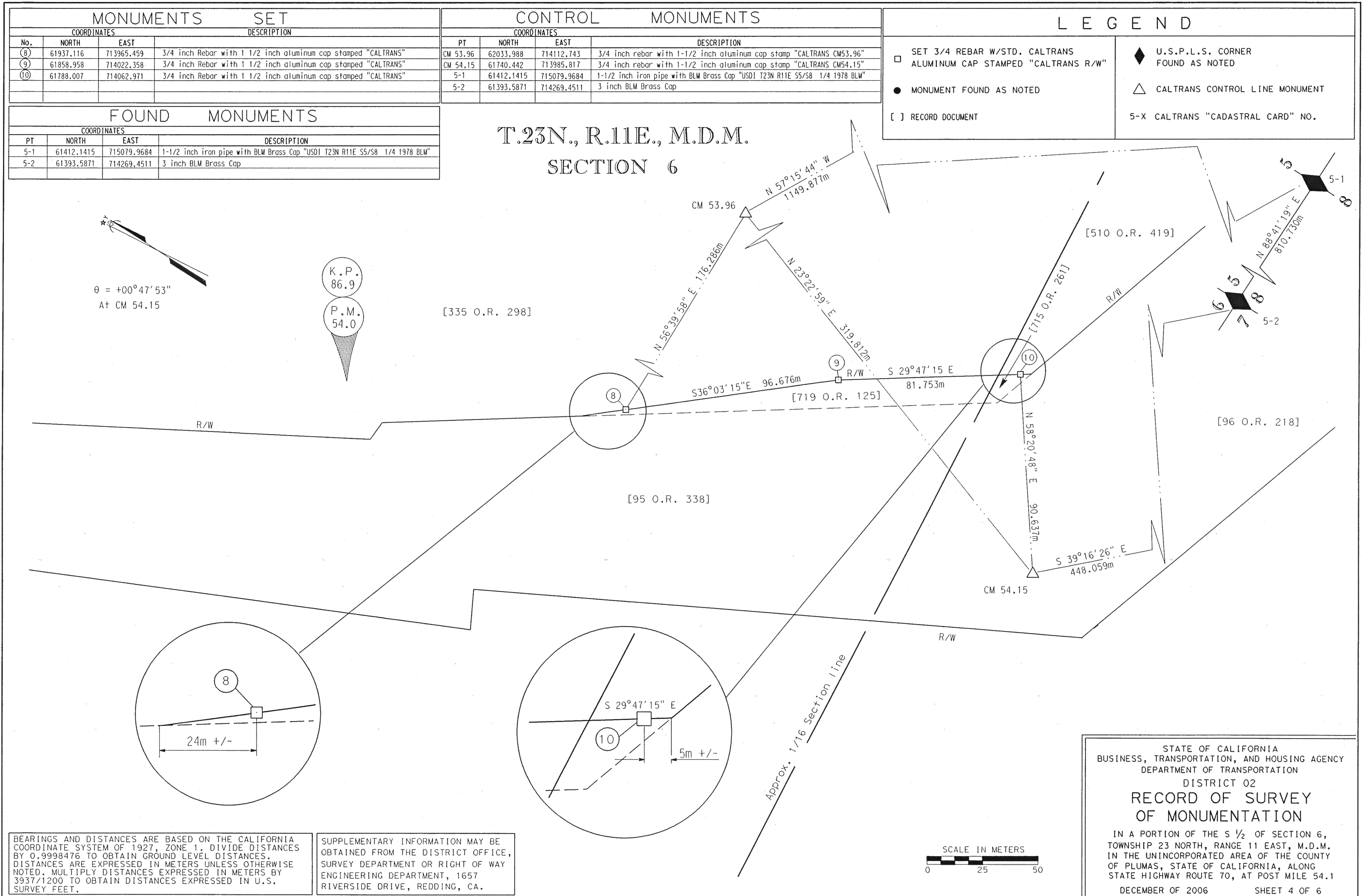
AT THE REQUEST OF DEPARTMENT OF TRANSPORTATION.
(SIGNED)

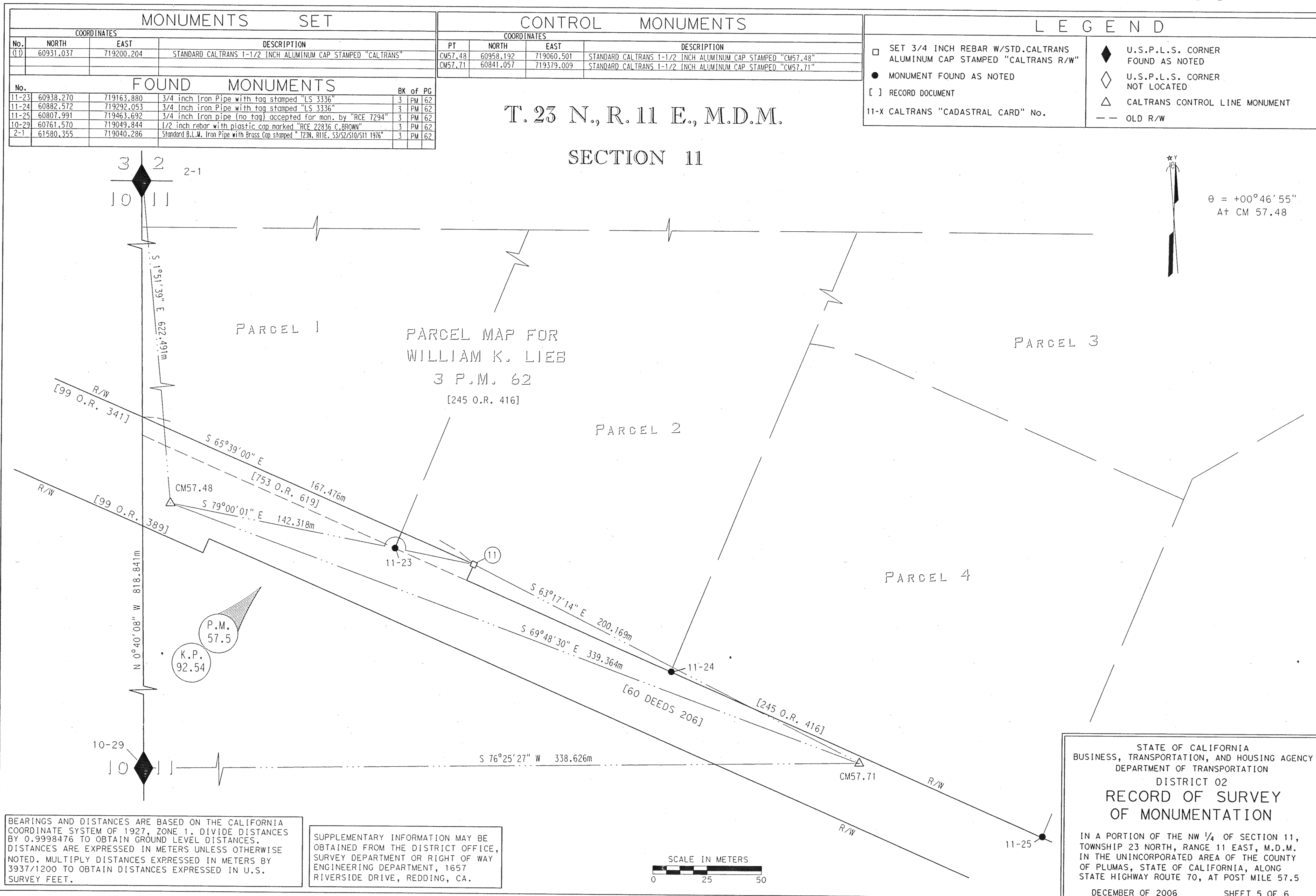
COUNTY RECORDER
Doc. No. 2008-0001845
BOOK 14 RECORD OF SURVEYS PAGE 137-142

NO FEE: STATE BUSINESS Judy Morrow DEPUTY

STATE OF CALIFORNIA
BUSINESS, TRANSPORTATION, AND HOUSING AGENCY
DEPARTMENT OF TRANSPORTATION
DISTRICT 02
RECORD OF SURVEY
OF MONUMENTATION

IN A PORTION OF THE NE 1/4 OF SECTION 20, TOWNSHIP 24 NORTH, RANGE 10 EAST, M.D.M. IN THE UNINCORPORATED AREA OF THE COUNTY OF PLUMAS, STATE OF CALIFORNIA, ALONG STATE HIGHWAY ROUTE 70, AT POST MILE 46.6
DECEMBER OF 2007 SHEET 1 OF 6





FOUND MONUMENTS

COORDINATES			DESCRIPTION	RECORDED		
No.	NORTH	EAST		BK	OF	PG
11-5	60480.536	720128.582	3/4 inch iron pipe with washer stamp "L.S.3336"	4	PM	84
11-17	60358.024	720128.142	3/4 inch iron pipe with washer stamp "L.S.3336"	4	PM	84
11-34	60585.259	719899.275	1/2 inch rebar (No Cap) 9 cm above ground	6	PM	53
11-35	60652.301	719743.955	1/2 inch rebar with plastic cap stamp "L.S.3297"	6	PM	53
11-36	60566.809	719903.405	1/2 inch rebar with plastic cap stamp "L.S.3297"	6	PM	53
11-37	60652.603	719744.151	1 inch iron pipe accepted for NW corner of Parcel 1	6	PM	53
11-38	60499.403	720049.842	1/2 inch rebar without tag, accepted for SE corner of Parcel 4	6	PM	53
11-39	60518.142	720053.535	1/2 inch rebar without tag, accepted for NE corner of Parcel 4	6	PM	53
11-40	60470.024	719970.950	1/2 rebar with plastic cap stamp "L.S.3297"	6	PM	53
11-41	60452.684	719976.864	3/4 inch iron pipe with washer stamp "L.S.3336"	4	PM	84
11-62	60495.983	720093.064	3/4 inch iron pipe with washer stamp "L.S.3336"	4	PM	84

CONTROL MONUMENTS

CM 58.02	60625.325	719863.596	3/4 inch rebar with 1-1/2 inch aluminum cap stamped "CM58.02"
CM 58.18	60513.784	720072.463	3/4 inch rebar with 1-1/2 inch aluminum cap stamped "CM58.18"

MONUMENTS SET

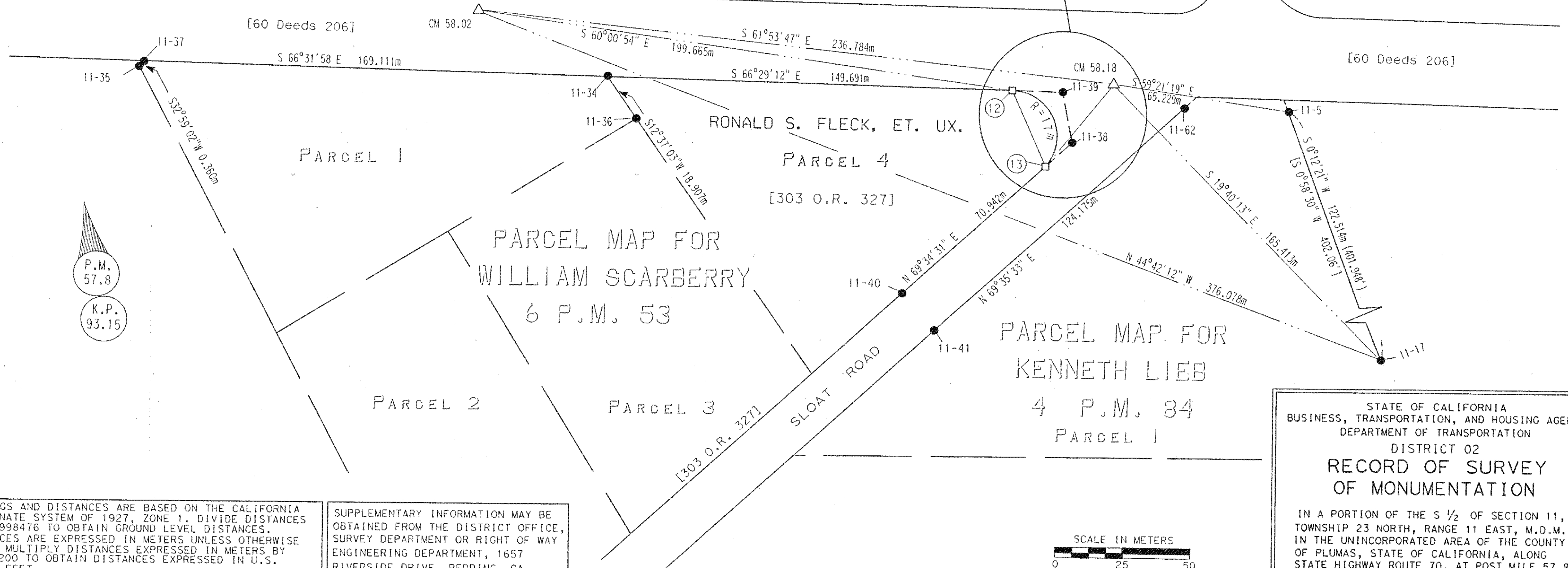
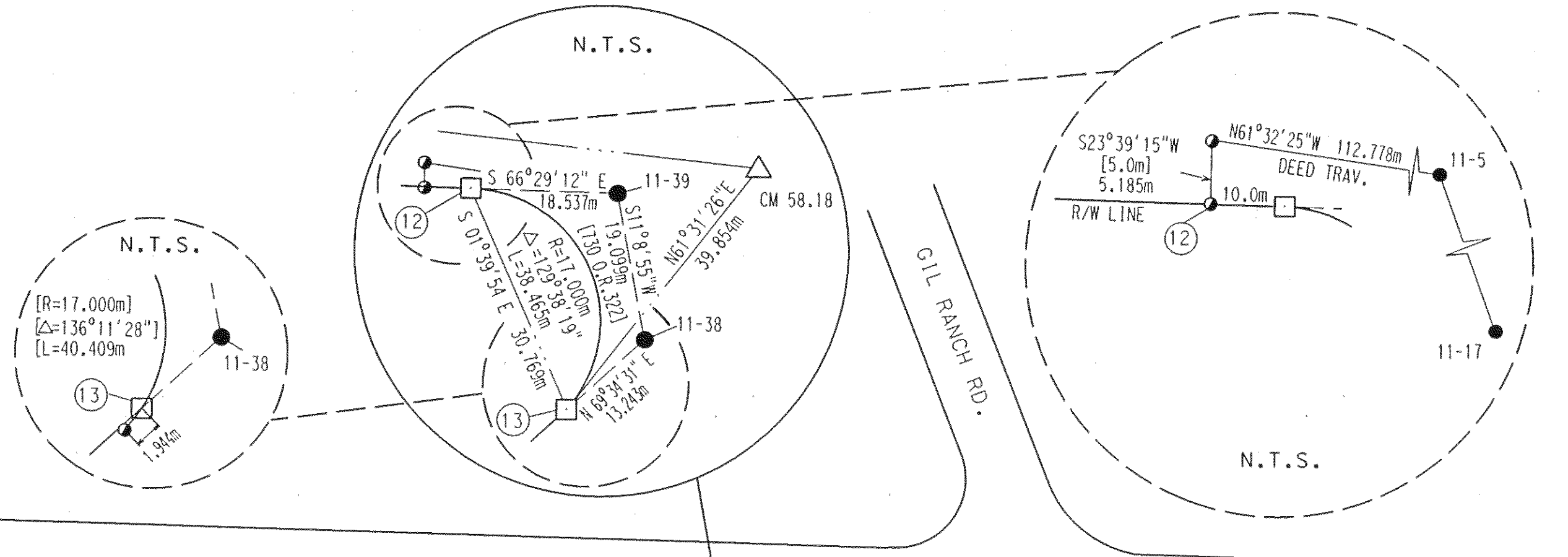
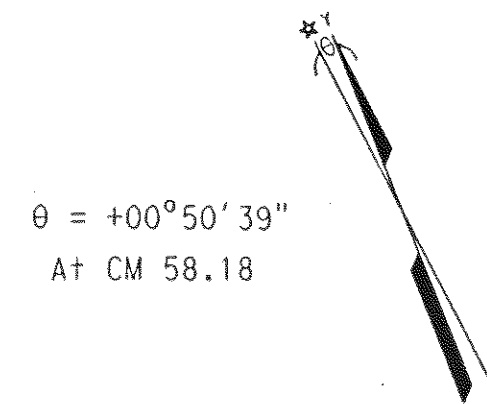
COORDINATES			DESCRIPTION
No.	NORTH	EAST	
(12)	60525.538	720036.537	3/4 inch rebar with 1-1/2 inch aluminum cap stamped "CALTRANS"
(13)	60494.782	720037.431	3/4 inch rebar with 1-1/2 inch aluminum cap stamped "CALTRANS"

T. 23N., R. 11E., M.D.M.

SECTION 11

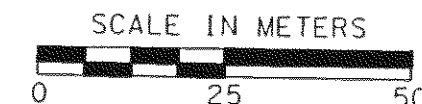
LEGEND

- SET 3/4 INCH REBAR W/STD.CALTRANS ALUMINUM CAP STAMPED "CALTRANS R/W"
- MONUMENT FOUND AS NOTED
- [] RECORD DOCUMENT
- TRAVERSE POINT PER DEED RECORDED 1/30/98 IN BOOK 730 AT PAGE 322
- ◆ U.S.P.L.S. CORNER FOUND AS NOTED
- ◇ U.S.P.L.S. CORNER NOT LOCATED
- △ CALTRANS CONTROL LINE MONUMENT
- 11-X CALTRANS "CADASTRAL CARD" No.



BEARINGS AND DISTANCES ARE BASED ON THE CALIFORNIA COORDINATE SYSTEM OF 1927, ZONE 1. DIVIDE DISTANCES BY 0.9998476 TO OBTAIN GROUND LEVEL DISTANCES. DISTANCES ARE EXPRESSED IN METERS UNLESS OTHERWISE NOTED. MULTIPLY DISTANCES EXPRESSED IN METERS BY 3937/1200 TO OBTAIN DISTANCES EXPRESSED IN U.S. SURVEY FEET.

SUPPLEMENTARY INFORMATION MAY BE OBTAINED FROM THE DISTRICT OFFICE, SURVEY DEPARTMENT OR RIGHT OF WAY ENGINEERING DEPARTMENT, 1657 RIVERSIDE DRIVE, REDDING, CA.



STATE OF CALIFORNIA
BUSINESS, TRANSPORTATION, AND HOUSING AGENCY
DEPARTMENT OF TRANSPORTATION
DISTRICT 02
RECORD OF SURVEY
OF MONUMENTATION
IN A PORTION OF THE S 1/2 OF SECTION 11,
TOWNSHIP 23 NORTH, RANGE 11 EAST, M.D.M.
IN THE UNINCORPORATED AREA OF THE COUNTY
OF PLUMAS, STATE OF CALIFORNIA, ALONG
STATE HIGHWAY ROUTE 70, AT POST MILE 57.8
DECEMBER OF 2006 SHEET 6 OF 6