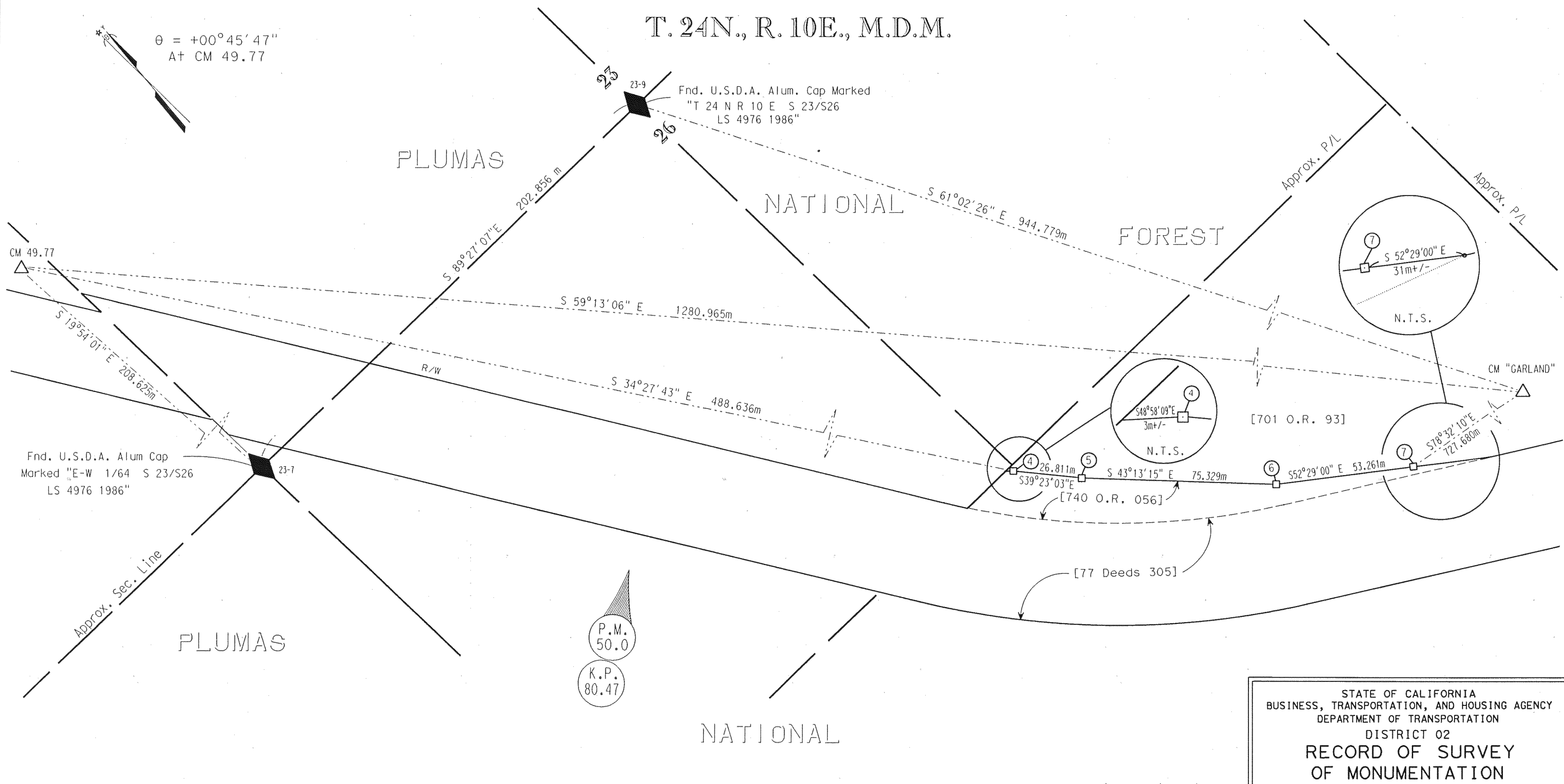


MONUMENT SET		
No.	NORTH & BEARINGS	EAST & DISTANCES
(4)	65729.624	709634.071
(5)	65708.901	709651.083
(6)	65654.007	709702.669
(7)	65621.572	709744.914

CONTROL POINTS			
PT	NORTH	EAST	DESCRIPTION
CM 49.77	66132.506	709357.573	3/4 inch rebar with 1-1/2 inch aluminum cap stamped "CALTRANS CM 49.77"
CM GARLAND	65476.947	710458.078	3/4 inch rebar with 1-1/2 inch aluminum cap stamped "CALTRANS GARLAND"

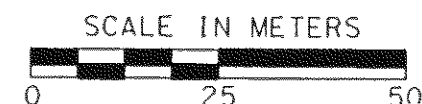
FOUND MONUMENTS			
No.	NORTH	EAST	DESCRIPTION
23-7	65936.339	709428.584	Std. 3-1/4 inch U.S. FOREST SERVICE brass cap stamped "E-W1/64 S23/S26"
23-9	65934.398	709631.431	Std. 3 inch U.S. FOREST SERVICE aluminum cap stamped "T24N R10E 23/26"

LEGEND	
□	SET 3/4 INCH REBAR W/STD. CALTRANS ALUMINUM CAP STAMPED "CALTRANS R/W"
●	MONUMENT FOUND AS NOTED
[ ]	RECORD DOCUMENT
23-X	CALTRANS CADASTRAL
◆	U.S.P.L.S. CORNER FOUND AS NOTED
◇	SECTION OR FRACTIONAL CORNER NOT LOCATED
△	CALTRANS CONTROL LINE MONUMENT



BEARINGS AND DISTANCES ARE BASED ON THE CALIFORNIA COORDINATE SYSTEM OF 1927, ZONE 1. DIVID DISTANCES BY 0.9998476 TO OBTAIN GROUND LEVEL DISTANCES. DISTANCES ARE EXPRESSED IN METERS UNLESS OTHERWISE NOTED. MULTIPLY DISTANCES EXPRESSED IN METERS BY 3937/1200 TO OBTAIN DISTANCES EXPRESSED IN U.S. SURVEY FEET.

SUPPLEMENTARY INFORMATION MAY BE OBTAINED FROM THE DISTRICT OFFICE, SURVEY DEPARTMENT OR RIGHT OF WAY ENGINEERING DEPARTMENT, 1657 RIVERSIDE DRIVE, REDDING, CA.



STATE OF CALIFORNIA  
 BUSINESS, TRANSPORTATION, AND HOUSING AGENCY  
 DEPARTMENT OF TRANSPORTATION  
 DISTRICT 02  
**RECORD OF SURVEY  
 OF MONUMENTATION**  
 IN A PORTION OF THE NE 1/2 OF SECTION 26,  
 TOWNSHIP 24 NORTH, RANGE 10 EAST, M.D.M.  
 IN THE UNINCORPORATED AREA OF THE COUNTY  
 OF PLUMAS, STATE OF CALIFORNIA, ALONG  
 STATE HIGHWAY ROUTE 70, AT POST MILE 50.0  
 DECEMBER OF 2006 SHEET 3 OF 6