

MONUMENTS SET			
COORDINATES		DESCRIPTION	
No.	NORTH	EAST	DESCRIPTION
(1)	60931.037	719200.204	STANDARD CALTRANS 1-1/2 INCH ALUMINUM CAP STAMPED "CALTRANS"

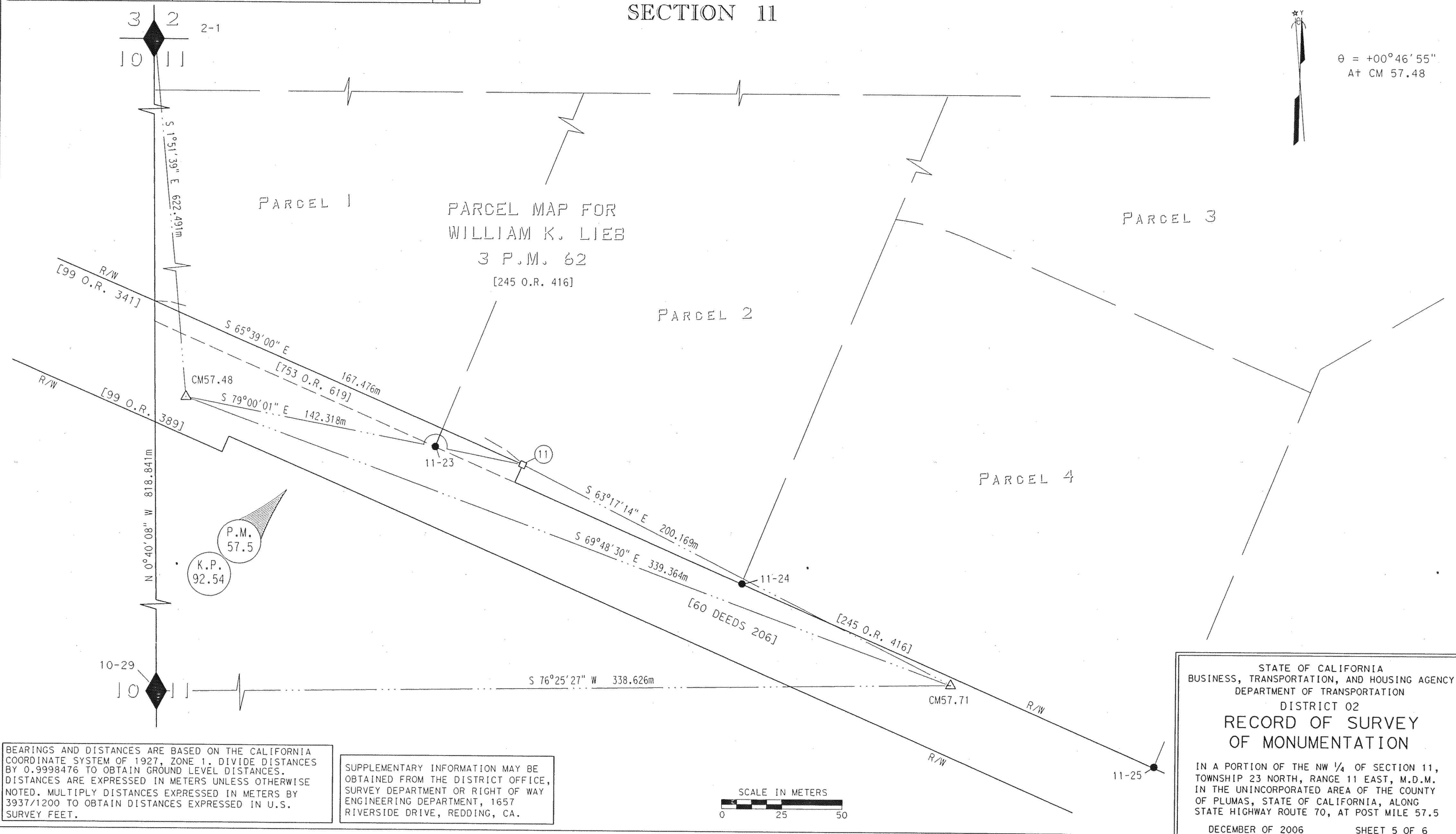
FOUND MONUMENTS				
No.	NORTH	EAST	DESCRIPTION	BK of PG
11-23	60938.270	719163.880	3/4 inch Iron Pipe with tag stamped "LS 3336"	3 PM 62
11-24	60882.572	719292.053	3/4 inch iron Pipe with tag stamped "LS 3336"	3 PM 62
11-25	60807.991	719463.692	3/4 inch Iron pipe (no tag) accepted for mon. by "RCE 7294"	3 PM 62
10-29	60761.570	719049.844	1/2 inch rebar with plastic cap marked "RCE 22836 C. BROWN"	3 PM 62
2-1	61580.355	719040.286	Standard B.L.W. Iron Pipe with Brass Cap stamped "T2N, R11E, S3/2/S10/S11 1976"	3 PM 62

CONTROL MONUMENTS			
COORDINATES		DESCRIPTION	
PT	NORTH	EAST	DESCRIPTION
CM57.48	60958.192	719060.501	STANDARD CALTRANS 1-1/2 INCH ALUMINUM CAP STAMPED "CM57.48"
CM57.71	60841.057	719379.009	STANDARD CALTRANS 1-1/2 INCH ALUMINUM CAP STAMPED "CM57.71"

LEGEND	
□	SET 3/4 INCH REBAR W/STD.CALTRANS ALUMINUM CAP STAMPED "CALTRANS R/W"
●	MONUMENT FOUND AS NOTED
[ ]	RECORD DOCUMENT
11-X	CALTRANS "CADASTRAL CARD" No.
◆	U.S.P.L.S. CORNER FOUND AS NOTED
◇	U.S.P.L.S. CORNER NOT LOCATED
△	CALTRANS CONTROL LINE MONUMENT
---	OLD R/W

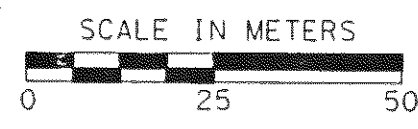
T. 23 N., R. 11 E., M.D.M.

SECTION 11



BEARINGS AND DISTANCES ARE BASED ON THE CALIFORNIA COORDINATE SYSTEM OF 1927, ZONE 1. DIVIDE DISTANCES BY 0.9998476 TO OBTAIN GROUND LEVEL DISTANCES. DISTANCES ARE EXPRESSED IN METERS UNLESS OTHERWISE NOTED. MULTIPLY DISTANCES EXPRESSED IN METERS BY 3937/1200 TO OBTAIN DISTANCES EXPRESSED IN U.S. SURVEY FEET.

SUPPLEMENTARY INFORMATION MAY BE OBTAINED FROM THE DISTRICT OFFICE, SURVEY DEPARTMENT OR RIGHT OF WAY ENGINEERING DEPARTMENT, 1657 RIVERSIDE DRIVE, REDDING, CA.



STATE OF CALIFORNIA  
 BUSINESS, TRANSPORTATION, AND HOUSING AGENCY  
 DEPARTMENT OF TRANSPORTATION  
 DISTRICT 02  
**RECORD OF SURVEY  
 OF MONUMENTATION**  
 IN A PORTION OF THE NW 1/4 OF SECTION 11,  
 TOWNSHIP 23 NORTH, RANGE 11 EAST, M.D.M.  
 IN THE UNINCORPORATED AREA OF THE COUNTY  
 OF PLUMAS, STATE OF CALIFORNIA, ALONG  
 STATE HIGHWAY ROUTE 70, AT POST MILE 57.5  
 DECEMBER OF 2006 SHEET 5 OF 6