

FOUND POINTS

SEC PT	COORDINATES		DESCRIPTION	RECORDED	
	NORTH	EAST		BK OF	PG
3 1	174,837.773	2,417,913.293	FND 6"x6" CONCRETE MONUMENT	NOT OF RECORD	
3 2	174,742.636	2,417,944.436	FND 6"x6" CONCRETE MONUMENT	NOT OF RECORD	
4 4	174,068.747	2,417,012.085	FND 6"x6" CONCRETE MONUMENT	NOT OF RECORD	
4 17	175,845.895	2,417,738.035	Fnd. 2 1/2" O.D. I.P. w/3" USDI-BLM Cop 1973	8 RS	55
4 18	173,186.126	2,417,773.585	Fnd. 2 1/2" O.D. I.P. w/3" USDI-BLM Cop 1985	8 RS	55

LEGEND

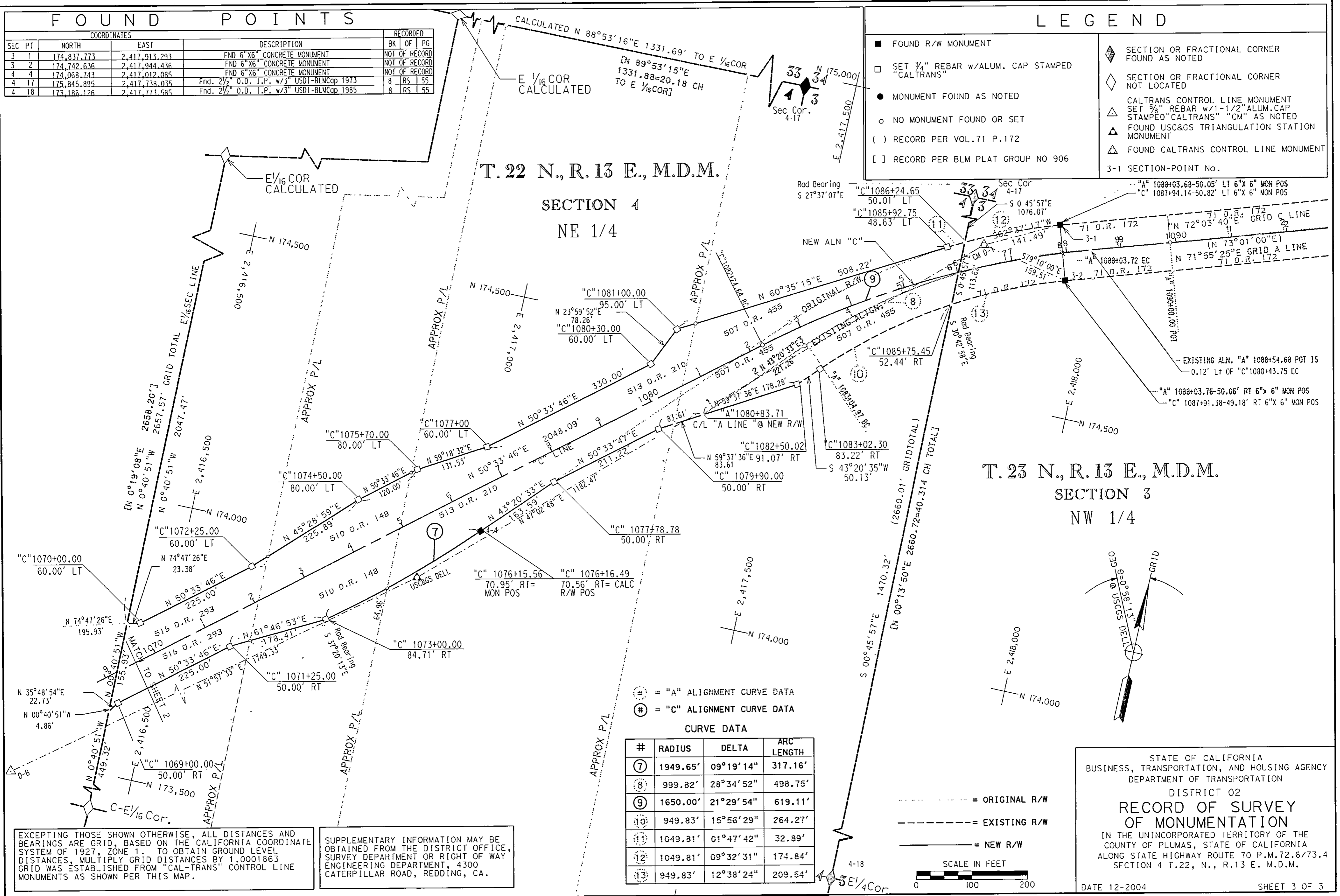
- FOUND R/W MONUMENT
 - SET 3/4" REBAR w/ALUM. CAP STAMPED "CALTRANS"
 - MONUMENT FOUND AS NOTED
 - NO MONUMENT FOUND OR SET
 - () RECORD PER VOL. 71 P. 172
 - [] RECORD PER BLM PLAT GROUP NO 906
 - ◆ SECTION OR FRACTIONAL CORNER FOUND AS NOTED
 - ◇ SECTION OR FRACTIONAL CORNER NOT LOCATED
 - △ CALTRANS CONTROL LINE MONUMENT SET 3/4" REBAR w/1-1/2" ALUM. CAP STAMPED "CALTRANS" "CM" AS NOTED
 - ▲ FOUND USC&GS TRIANGULATION STATION MONUMENT
 - △ FOUND CALTRANS CONTROL LINE MONUMENT
- 3-1 SECTION-POINT No.

T. 22 N., R. 13 E., M.D.M.

SECTION 4
NE 1/4

T. 23 N., R. 13 E., M.D.M.

SECTION 3
NW 1/4

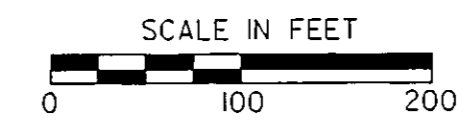


- ⑦ = "A" ALIGNMENT CURVE DATA
- ⑧ = "C" ALIGNMENT CURVE DATA

CURVE DATA

#	RADIUS	DELTA	ARC LENGTH
⑦	1949.65'	09°19'14"	317.16'
⑧	999.82'	28°34'52"	498.75'
⑨	1650.00'	21°29'54"	619.11'
⑩	949.83'	15°56'29"	264.27'
⑪	1049.81'	01°47'42"	32.89'
⑫	1049.81'	09°32'31"	174.84'
⑬	949.83'	12°38'24"	209.54'

- ORIGINAL R/W
- EXISTING R/W
- NEW R/W



STATE OF CALIFORNIA
BUSINESS, TRANSPORTATION, AND HOUSING AGENCY
DEPARTMENT OF TRANSPORTATION
DISTRICT 02
**RECORD OF SURVEY
OF MONUMENTATION**
IN THE UNINCORPORATED TERRITORY OF THE
COUNTY OF PLUMAS, STATE OF CALIFORNIA
ALONG STATE HIGHWAY ROUTE 70 P.M. 72.6/73.4
SECTION 4 T. 22, N., R. 13 E. M.D.M.
DATE 12-2004 SHEET 3 OF 3

EXCEPTING THOSE SHOWN OTHERWISE, ALL DISTANCES AND BEARINGS ARE GRID, BASED ON THE CALIFORNIA COORDINATE SYSTEM OF 1927, ZONE 1. TO OBTAIN GROUND LEVEL DISTANCES, MULTIPLY GRID DISTANCES BY 1.0001863. GRID WAS ESTABLISHED FROM "CAL-TRANS" CONTROL LINE MONUMENTS AS SHOWN PER THIS MAP.

SUPPLEMENTARY INFORMATION MAY BE OBTAINED FROM THE DISTRICT OFFICE, SURVEY DEPARTMENT OR RIGHT OF WAY ENGINEERING DEPARTMENT, 4300 CATERPILLAR ROAD, REDDING, CA.