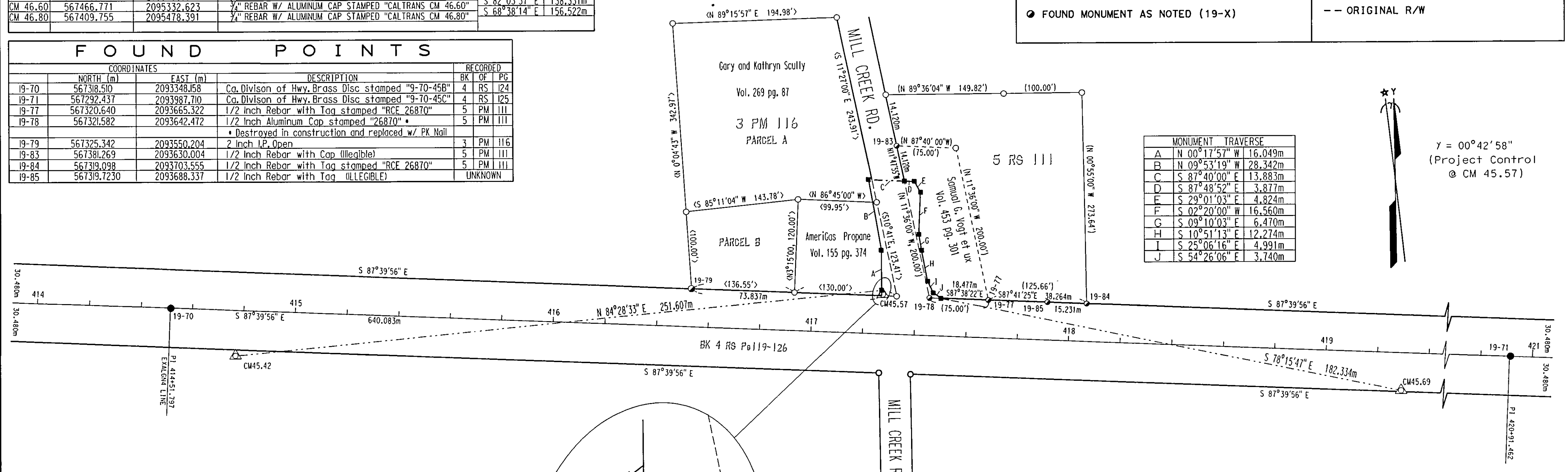


CONTROL MONUMENTS			INVERSE DATA	
NAME	NORTH (m)	EAST (m)	BEARING	DISTANCE
CM 45.42	567299.821	2093373.533	N 84°34'24" E	251.629m
CM 45.57	567323.618	2093624.033	S 78°57'25" E	205.222m
CM 45.69	567284.308	2093825.455	N 81°03'56" E	137.814m
CM 45.80	567305.711	2093961.597	S 87°13'58" E	195.217m
CM 45.90	567296.286	2094156.586	S 74°52'33" E	108.167m
CM 45.96	567268.064	2094261.006	N 82°55'35" E	183.176m
CM 46.08	567290.621	2094442.788	S 79°42'22" E	219.190m
CM46.12R	567251.452	2094658.450	N 77°24'24" E	261.786m
CM 46.23	567308.529	2094913.938	N 57°48'17" E	332.860m
CM 46.41	567485.879	2095195.617	S 82°03'37" E	138.331m
CM 46.60	567466.771	2095332.623	S 68°38'14" E	156.522m
CM 46.80	567409.755	2095478.391		

FOUND POINTS				
COORDINATES			RECORDED	
	NORTH (m)	EAST (m)	DESCRIPTION	BK OF PG
19-70	567308.510	2093348.158	Ca. Divison of Hwy. Brass Disc stamped "9-70-45B"	4 RS 124
19-71	567292.437	2093987.710	Ca. Divison of Hwy. Brass Disc stamped "9-70-45C"	4 RS 125
19-77	567320.640	2093665.322	1/2 Inch Rebar with Tag stamped "RCE 26870"	5 PM 111
19-78	567321.582	2093642.472	1/2 Inch Aluminum Cap stamped "26870" * * Destroyed in construction and replaced w/ PK Nail	5 PM 111
19-79	567325.342	2093550.204	2 Inch I.P. Open	3 PM 116
19-83	567381.269	2093630.004	1/2 Inch Rebar with Cap (Illegible)	5 PM 111
19-84	567319.098	2093703.555	1/2 Inch Rebar with Tag stamped "RCE 26870"	5 PM 111
19-85	567319.7230	2093688.337	1/2 Inch Rebar with Tag (ILLEGIBLE)	UNKNOWN

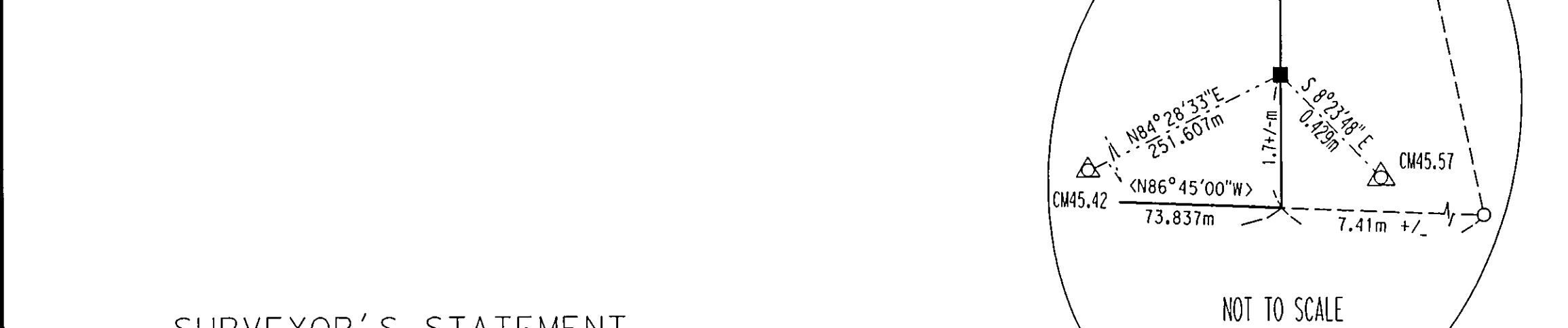
T. 24N., R. 10E., M.D.M. SECTION 19

LEGEND	
■ SET 3/8" REBAR with 1/2" ALUM. CAP STAMPED "CALTRANS"	△ SUPPLEMENTAL PROJECT CONTROL
● FOUND CALIFORNIA DIVISION OF HIGHWAYS BRASS DISK IN CONCRETE PER 4 RS 119-126	< > RECORD DATA PER 3 PM 116
○ CALCULATED POINT, NOT TIED THIS SURVEY	() RECORD DATA PER 5 RS 111
● FOUND MONUMENT AS NOTED (19-X)	-- ORIGINAL R/W

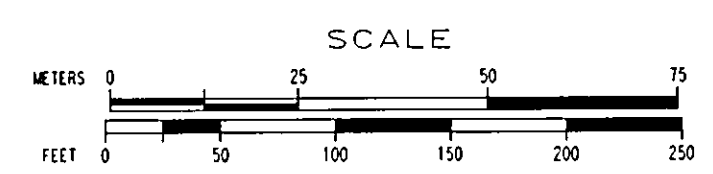


MONUMENT TRAVERSE	
A	N 00°17'57" W 16.049m
B	N 09°53'19" W 28.342m
C	S 87°40'00" E 13.883m
D	S 87°48'52" E 3.877m
E	S 29°01'03" E 4.824m
F	S 02°20'00" W 16.560m
G	S 09°10'03" E 6.470m
H	S 10°51'13" E 12.274m
I	S 25°06'16" E 4.991m
J	S 54°26'06" E 3.740m

γ = 00°42'58"
(Project Control @ CM 45.57)

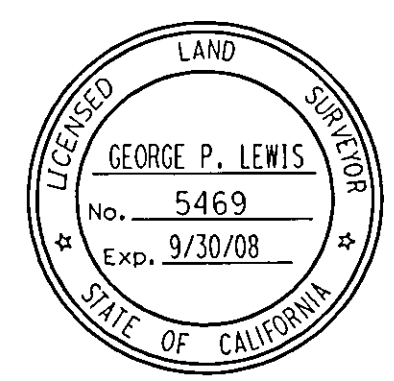


RECORDER'S STATEMENT
 FILED THIS 9th DAY OF November, 2006
 AT 2:14 P.M.
 IN BOOK 14 OF RECORD OF SURVEYS AT PAGE 47
 AT THE REQUEST OF DEPARTMENT OF TRANSPORTATION.
 (SIGNED) Kausa L Davis Deputy
 COUNTY RECORDER: KATHLEEN WILLIAMS
 Doc. No. 2006-0009961 DEPUTY
 NO FEE: STATE BUSINESS



NOTE: THE PURPOSE OF THIS SURVEY IS TO MONUMENT THE NEWLY ACQUIRED STATE RIGHT OF WAY LINE ALONG THE NORTHWESTERLY AND THE NORTHEASTERLY PORTIONS OF THE INTERSECTION.

SURVEYOR'S STATEMENT
 THIS MAP CORRECTLY REPRESENTS A SURVEY MADE BY ME OR UNDER MY DIRECTION IN CONFORMANCE WITH THE REQUIREMENTS OF THE LAND SURVEYORS ACT AT THE REQUEST OF DEPARTMENT OF TRANSPORTATION IN NOVEMBER OF 2005.
 GEORGE P. LEWIS [Signature]
 L.S. No. 5469
 LICENSE EXPIRATION DATE 9-30-2008



BEARINGS AND DISTANCES ARE BASED ON THE CALIFORNIA COORDINATE SYSTEM OF 1983, (1991.35) ZONE 1. MULTIPLY DISTANCES BY 1.000150307 TO OBTAIN GROUND LEVEL DISTANCES. DISTANCES ARE EXPRESSED IN METERS UNLESS OTHERWISE NOTED. MULTIPLY DISTANCES EXPRESSED IN METERS BY 3937/1200 TO OBTAIN DISTANCES EXPRESSED IN U.S. SURVEY FEET. GRID WAS ESTABLISHED THROUGH TIES TO CONTROL POINTS CM 45.42 AND CM 46.80 PER 12 RS 140.

SUPPLEMENTARY INFORMATION MAY BE OBTAINED FROM THE REDDING BRANCH, NORTH REGION OFFICE OF SURVEYORS, CALTRANS DISTRICT OFFICE, REDDING, CA.

COUNTY SURVEYOR'S STATEMENT
 THIS MAP HAS BEEN EXAMINED IN ACCORDANCE WITH SECTION 8766 OF THE LAND SURVEYORS ACT THIS 9th DAY OF Nov., 2006
 ROBERT T. HUNTER [Signature]
 R.C.E. 30515 PLUMAS COUNTY SURVEYOR
 LICENSE EXPIRES: MARCH 31, 2008

STATE OF CALIFORNIA
 BUSINESS, TRANSPORTATION, AND HOUSING AGENCY
 DEPARTMENT OF TRANSPORTATION
 DISTRICT 02
**RECORD OF SURVEY
 OF MONUMENTATION**
 IN A PORTION OF THE NE 1/4 OF SECTION 19, TOWNSHIP 24 NORTH, RANGE 10 EAST, M.D.M. IN THE UNINCORPORATED AREA OF THE COUNTY OF PLUMAS, STATE OF CALIFORNIA, ALONG STATE HIGHWAY ROUTE 70, AT POST MILE 45.5
 AUGUST OF 2006 SHEET 1 OF 1