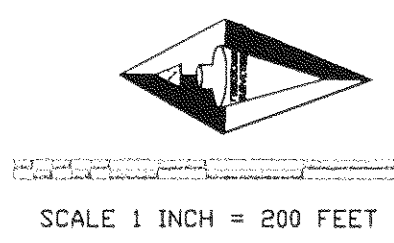


BASIS OF BEARINGS

THE SECTION LINE COMMON TO SECTIONS 33 AND 34, T. 24N., R. 11E., M.D.M., REPORTED AS N 00°02'15" W, IN THE BUREAU OF LAND MANAGEMENT NOTES OF AUGUST 2, 1985 AND AS SHOWN UPON 13 RS 105 FROM THE 1/4 CORNER COMMON TO SECTIONS 33 AND 34, AND THE SECTION CORNER COMMON TO SECTIONS 28, 27, 33 & 34, IS THE BASIS OF BEARINGS SHOWN ON THIS MAP.



BASIS OF BEARINGS

N 00°02'15" W (E) 2672.93 (E) N 00°02'15" W (D) 2673.13 (D)

[3] 1/4 COR.

CORNER NOTES

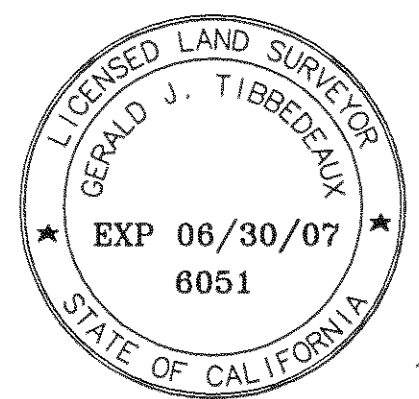
- [1] B.L.M. DISK MARKED FOR THE SECTION CORNER COMMON TO SECTIONS 27, 28, 33 & 34. BEARING TREES PER (D) & (E) 20' PINE S 32-30 W, A DISTANCE OF 47.5 FEET 19' OAK N 89 W, A DISTANCE OF 36.3 FEET
- [2] B.L.M. DISK MARKED FOR THE 1/4 CORNER BETWEEN SECTIONS 28 AND 33. BEARING TREES PER (D) & (E) 12' CEDAR S 11 W, A DISTANCE OF 64.7 FEET 9' PINE N 11-30 W, A DISTANCE OF 44.2 FEET
- [3] B.L.M. DISK MARKED FOR THE 1/4 CORNER BETWEEN SECTIONS 33 AND 34. BEARING TREES PER (D) & (E) 41' FIR SNAG S 75 W, A DISTANCE OF 28.4 FEET 13' PINE S 07-30 E, A DISTANCE OF 31.7 FEET 8' FIR S 28 W, A DISTANCE OF 6.6 FEET

LEGEND

- [4] B.L.M. DISK MARKED FOR THE 1/4 CORNER BETWEEN SECTIONS 27 AND 28. BEARING TREES PER (D) & (E) 18' OAK SNAG S 68 E, A DISTANCE OF 7.9 FEET 18' OAK S 45 W, A DISTANCE OF 33.7 FEET 9' FIR N 85 E, A DISTANCE OF 11.9 FEET
- [5] B.L.M. DISK MARKED FOR THE CENTER 1/4 CORNER OF SECTION 28. BEARING TREES PER (D) & (E) 7' PINE N 24 E, A DISTANCE OF 12.2 FEET 6' OAK S 66-45 W, A DISTANCE OF 6.6 FEET
- [6] FOUND 1" IRON PIPE, SET TAG P.L.S. 6051 (E)
- [7] FOUND 1/2" IRON PIPE, SET TAG P.L.S. 6051 (E)
- [8] FOUND 5/8" REBAR AND CAP MARKED L.S. 2843 (E)
- FOUND 1/2 INCH REBAR AND CAP MARKED P.L.S. 6051 (E)
- FOUND 1 INCH IRON PIPE AND TAG R.C.E. 13054, OR NOTED (E)
- FOUND 1/2 INCH IRON PIPE AND TAG, R.C.E. 13054 OR NOTED (E)
- ◆ SET 1/2 INCH REBAR AND CAP MARKED P.L.S. 6051
- (A) RECORD INFORMATION PER BOOK 665 OF OFFICIAL RECORDS, PAGE 557
- (B) RECORD INFORMATION PER BOOK 3 OF SUBDIVISION MAPS, PAGES 70 - 75
- (D) RECORD INFORMATION PER B.L.M. FIELD NOTES, AUGUST 22, 1985
- (E) RECORD INFORMATION PER BOOK 13 OF RECORDS OF SURVEYS, PAGES 105-106
- (F) RECORD INFORMATION PER DOCUMENT NO. 2006-0008882
- [No.] KEY TO CORNER NOTES

CURVE TABLE

Table with columns: CURVE, DELTA ANGLE, RADIUS, ARC. Includes RECORD and CURVE data for curves C1 through C22.



SURVEYOR'S STATEMENT

THIS MAP CORRECTLY REPRESENTS A SURVEY MADE BY ME OR UNDER MY DIRECTION IN CONFORMANCE WITH THE REQUIREMENTS OF THE PROFESSIONAL LAND SURVEYORS' ACT AT THE REQUEST OF RALPH AND PATRICIA WILBURN IN JUNE 2006.

Gerald Joseph Tibbodeaux P.L.S. 6051 License Expires 6-30-07

MAP NOTE

1. THE ROAD AND UTILITY EASEMENTS SHOWN HEREON AS THE EXTENTIONS OF RUNNING SPRINGS LANE AND FOUNTAIN SPRINGS LANE ARE PRIVATE EASEMENTS NOT SUBJECT TO IMPROVEMENT OR MAINTENANCE BY PLUMAS COUNTY. SAID EASEMENTS WILL NOT BECOME EFFECTIVE UNLESS AND UNTIL RESERVATIONS AND GRANTS ARE INCLUDED IN THE RESPECTIVE DEEDS.

LOT LINE ADJUSTMENT NOTE

THIS RECORD OF SURVEY WAS PREPARED TO REFLECT A LOT LINE ADJUSTMENT FOR WHICH A RESOLUTION IS RECORDED AS DOCUMENT No. 2006-0008882 OF OFFICIAL RECORDS.

COUNTY SURVEYOR'S STATEMENT

THIS MAP HAS BEEN EXAMINED IN ACCORDANCE WITH SECTION 8766 OF THE PROFESSIONAL LAND SURVEYORS' ACT THIS 14th DAY OF Dec., 2006.

R. Tom Hunt R.C.E. 30515 PLUMAS COUNTY SURVEYOR LICENSE EXPIRES 3-31-08

COUNTY RECORDERS STATEMENT

FILED THIS 15th DAY OF December, 2006 AT 9:10 A.M. IN BOOK 4 OF RECORDS OF SURVEYS, AT PAGE 49, AT THE REQUEST OF THE COUNTY SURVEYOR.

KATHLEEN WILLIAMS, COUNTY RECORDER BY: Aurora Davis DEPUTY



FEE: 800

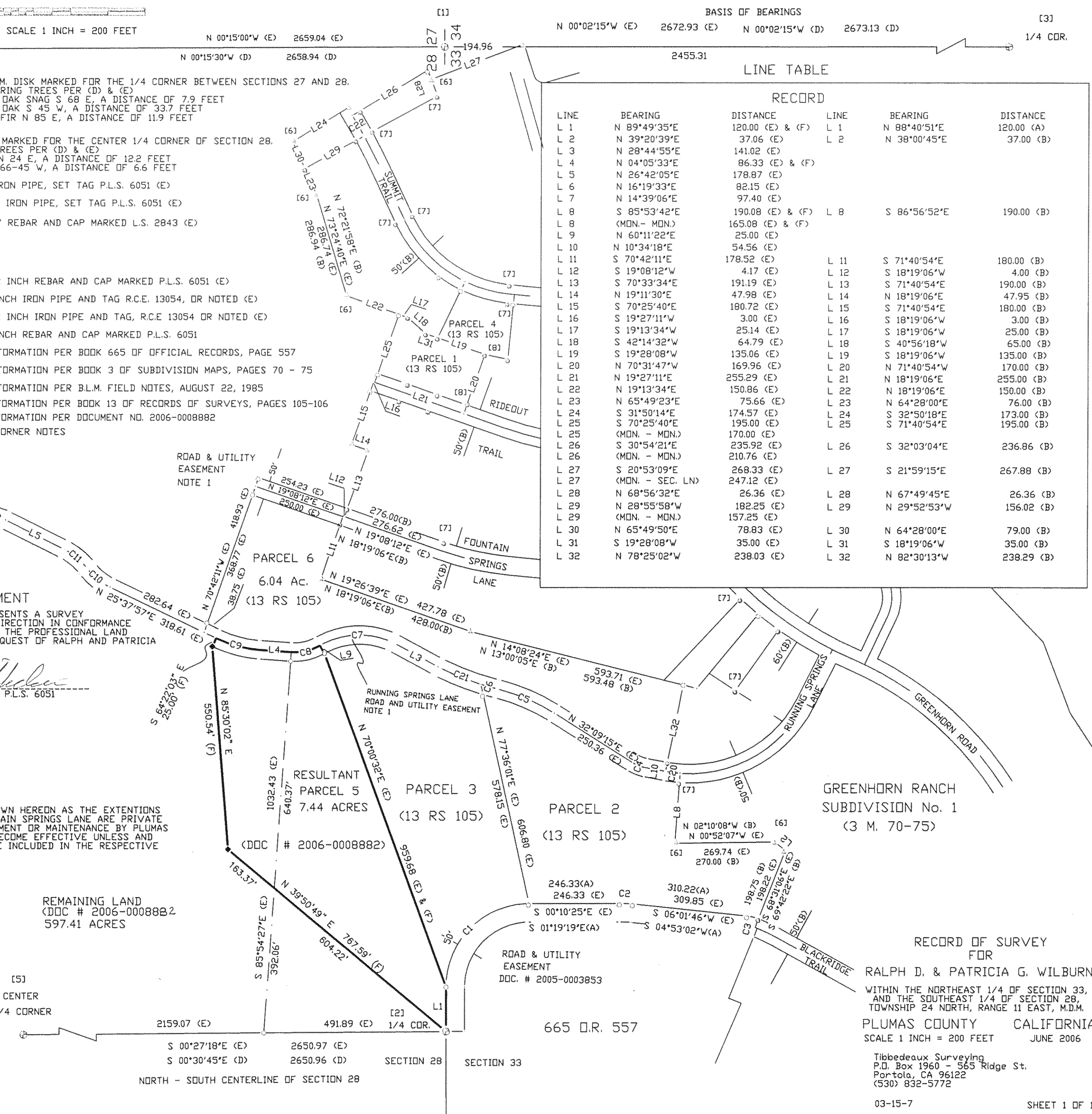
DOCUMENT No. 2006-0011083

REMAINING LAND (DDC # 2006-0008882) 597.41 ACRES

[5] CENTER 1/4 CORNER

SECTION 28 SECTION 33 NORTH - SOUTH CENTERLINE OF SECTION 28

LINE TABLE with columns: LINE, BEARING, DISTANCE, LINE, BEARING, DISTANCE. Lists 32 lines with their respective bearings and distances.



GREENHORN RANCH SUBDIVISION No. 1 (3 M. 70-75)

RECORD OF SURVEY FOR RALPH D. & PATRICIA G. WILBURN WITHIN THE NORTHEAST 1/4 OF SECTION 33, AND THE SOUTHEAST 1/4 OF SECTION 28, TOWNSHIP 24 NORTH, RANGE 11 EAST, M.D.M. PLUMAS COUNTY CALIFORNIA SCALE 1 INCH = 200 FEET JUNE 2006

Tibbodeaux Surveying P.O. Box 1960 - 565 Ridge St. Portola, CA 96122 (530) 832-5772