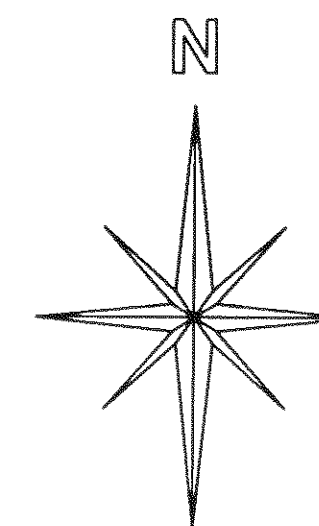


VINCINITY MAP
NO SCALE
R5E R6E

26	25	30	29
35	36	31	32
2	1	6	5
11	12	7	8



SCALE

1" = 600 FEET



BASIS OF BEARING

MEASURED BEARINGS ARE BASED ON THE RECORD OF SURVEY RECORDED IN IN BOOK 6, PAGES 48-49 OF PLUMAS COUNTY RECORDS. BASED ON THE MEASUREMENT BETWEEN THE S.E. CORNER AND THE E 1/4 OF SECTION 31.

T27N

T26N

GENERAL NOTES

A STANDARD UNITED STATES FOREST SERVICE (USFS) MONUMENT IS A 2-1/2" DIAMETER ALUMINUM PIPE, 28" LONG WITH A 3-1/4" ALUMINUM CAP EDGE-MARKED WITH THE USFS LOGO.

A STANDARD BUREAU OF LAND MANAGEMENT (BLM) MONUMENT IS A 2-1/2" DIAMETER STEEL PIPE, 30" LONG WITH A 3-1/2" BRASS CAP EDGE-MARKED WITH THE BLM LOGO.

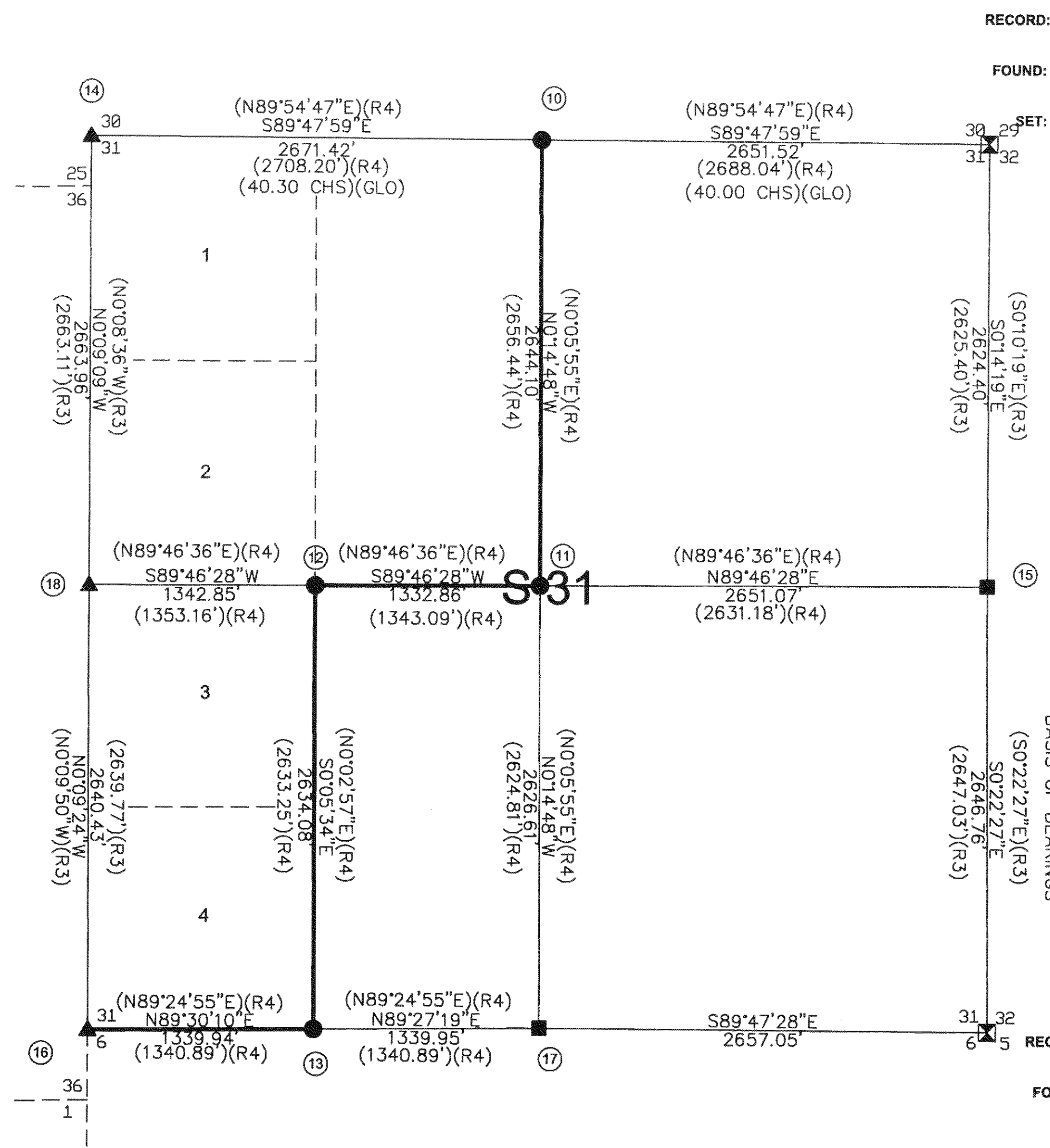
THE NORTH 1/4 CORNER IS OUT OF POSITION BECAUSE THE N.E. CORNER OF SECTION 31 WAS INCORRECTLY MEASURED BY R.DAWSON (LS 3621) ON 4RS148.

SURVEY HISTORY

R#	SECTION	DATE	LS#
R1	4RS6&7	1971	LS 2322
R3	6RS49	1981	LS 3318
R4	4RS148	1977	LS 3621

LEGEND

- ▲ FOUND AS NOTED
- ⊠ FOUND BLM CORNER SET UNDER REMONUMENTATION SPECIAL INSTRUCTIONS 1970 & NOTED AS PER(6RS48)
- SET STANDARD U.S. FOREST SERVICE DRIVE-IN MONUMENT (BEARING TREES AS NOTED)
- FD STANDARD U.S. FOREST SERVICE MONUMENT (R4)(BEARING TREES AS NOTED)
- FOREST BOUNDARY (MARKED TO STANDARD)
- Ⓢ CORNER NUMBER SEE PAGE 3 OF 3.



RECORD: STANDARD BLM MONUMENT (R4)
FWB: 10" PINE S33°E 9.9' (R4)
10" FIR S56°W 22.4' (R4)
FOUND: STANDARD BLM MONUMENT
FWB: 15" PINE S33°E 9.9'
15" FIR S56°W 22.4'
SET: NOTHING (ACCEPTED CORNER)

RECORD: STANDARD BLM MONUMENT (F4)
FWB: 6" FIR STUMP/SCRIBING S57°E 16.7'(F4)
15" FIR/SCRIBING N14°W 37.8'(F4)
FOUND: STANDARD BLM MONUMENT
FWB: 18" FIR/SCRIBING S57°E 16.7'
24" FIR/SCRIBING N14°W 37.8'
SET: NOTHING (ACCEPTED CORNER)

RECORD OF SURVEY
SECTION 31, T27N R6E MDM.
PLUMAS COUNTY, CALIFORNIA
FOR
U.S.D.A. FOREST SERVICE LASSEN N.F.
2550 RIVERSIDE DRIVE
P.O. BOX 11500, QUINCY, CA.

DRAWN BY: BSNOW DATE: DECEMBER, 2006 SHEET 2 OF 3