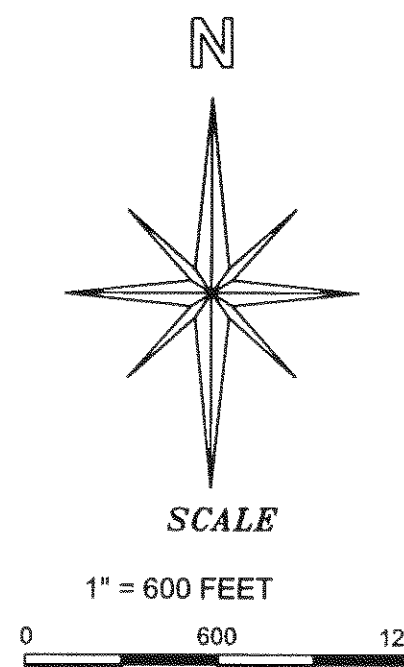
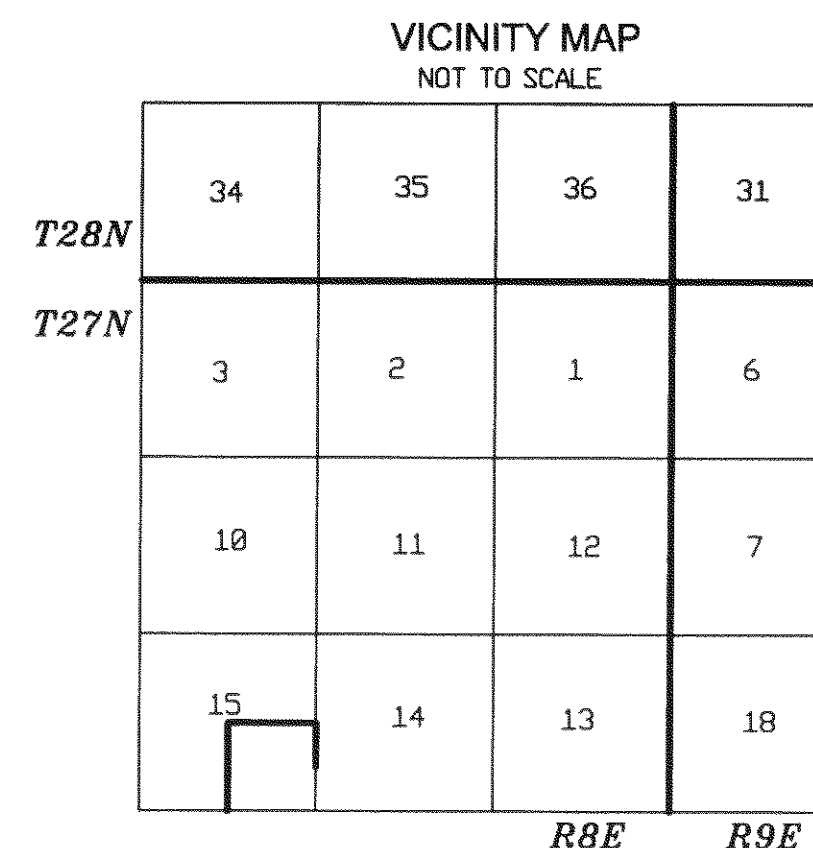
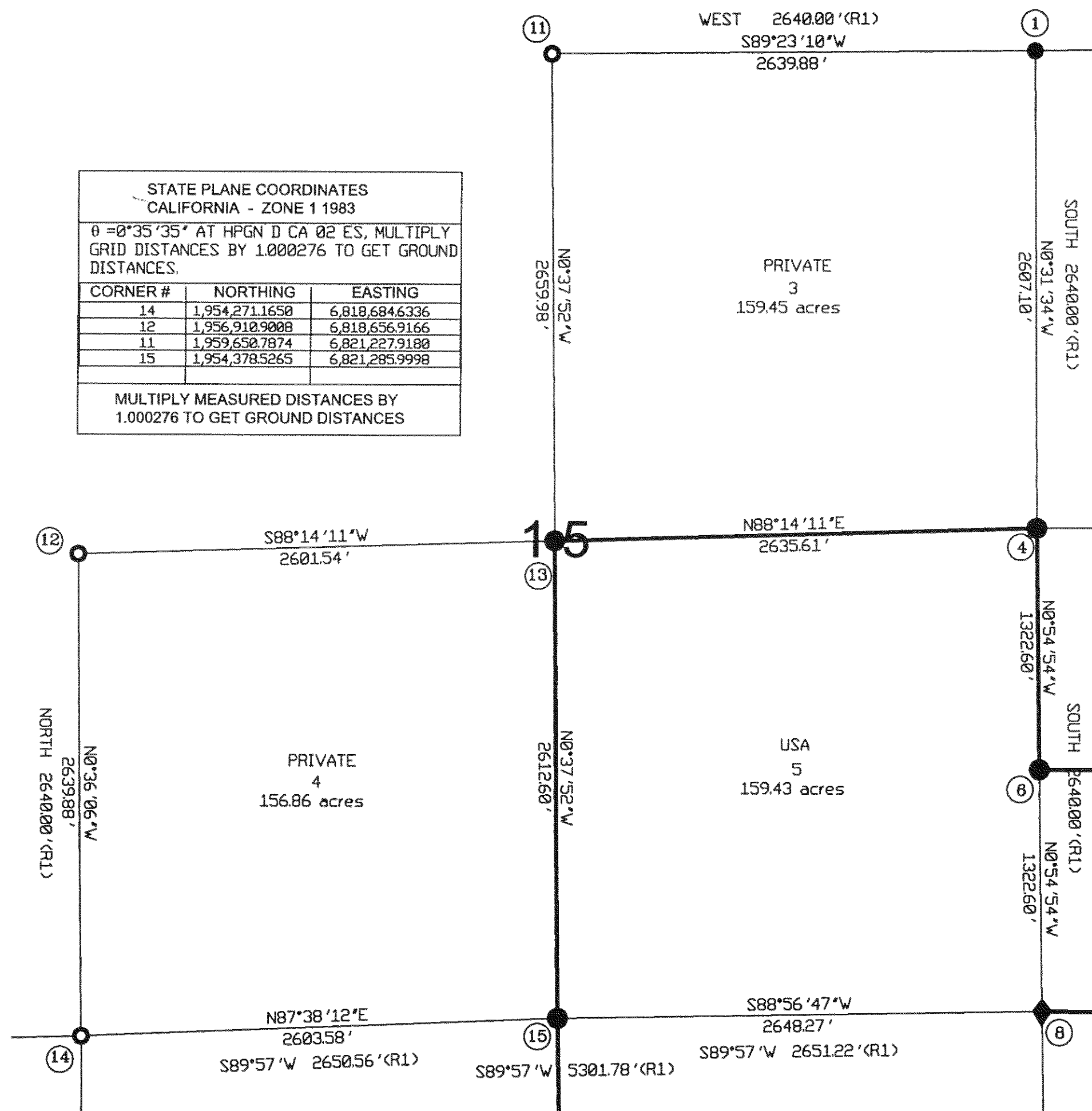


STATE PLANE COORDINATES CALIFORNIA - ZONE 1 1983		
θ = 0°35'35" AT HPGN D CA 02 ES, MULTIPLY GRID DISTANCES BY 1.000276 TO GET GROUND DISTANCES.		
CORNER #	NORTHING	EASTING
14	1,954,271.1650	6,818,604.6336
12	1,956,910.9008	6,818,656.9166
11	1,959,650.7874	6,821,227.9180
15	1,954,378.5265	6,821,285.9998
MULTIPLY MEASURED DISTANCES BY 1.000276 TO GET GROUND DISTANCES		



**BASIS OF BEARINGS**  
SEE SHEET 1 OF 5

**GENERAL NOTES**

A STANDARD UNITED STATES FOREST SERVICE (USFS) DRIVE-IN MONUMENT IS A 5/8" DIAMETER ALUMINUM ROD WITH A 3-1/4" ALUMINUM CAP EDGE-MARKED WITH THE USFS LOGO.

A STANDARD BUREAU OF LAND MANAGEMENT (BLM) MONUMENT IS A 2-1/2" DIAMETER STEEL PIPE, 28" LONG WITH A 3-1/2" BRASS CAP EDGE-MARKED WITH THE BLM LOGO.

**SURVEY HISTORY**

(R1) GENERAL LAND OFFICE NOTES (1860 J.M. INGALLS)

**LEGEND**

- ◆ FD COLLINS ALMANOR FOREST (CAF) CORNER
- CALCULATED CORNER
- ⑨ CORNER NOTE
- SET STANDARD U.S. FOREST SERVICE DRIVE-IN MONUMENT (BEARING TREES AS NOTED)
- PROPERTY BOUNDARY MARKED AND POSTED

**RECORD OF SURVEY**  
SECTION 15, T27N R8E, MDM,  
PLUMAS COUNTY, CALIFORNIA  
FOR  
U.S.D.A. PLUMAS NATIONAL FOREST  
P.O. BOX 11500, QUINCY, CA. 98971  
DRAWN BY: B. SNOW DATE: OCTOBER, 2006