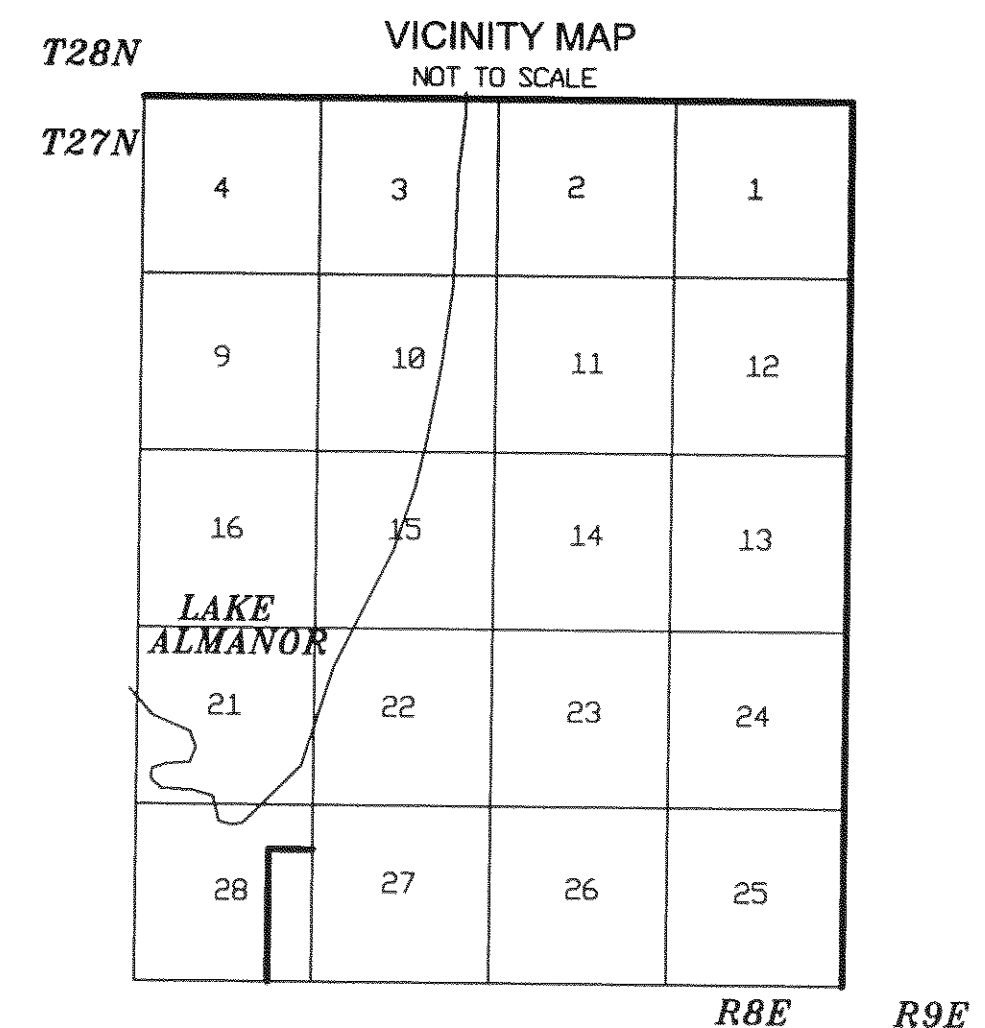
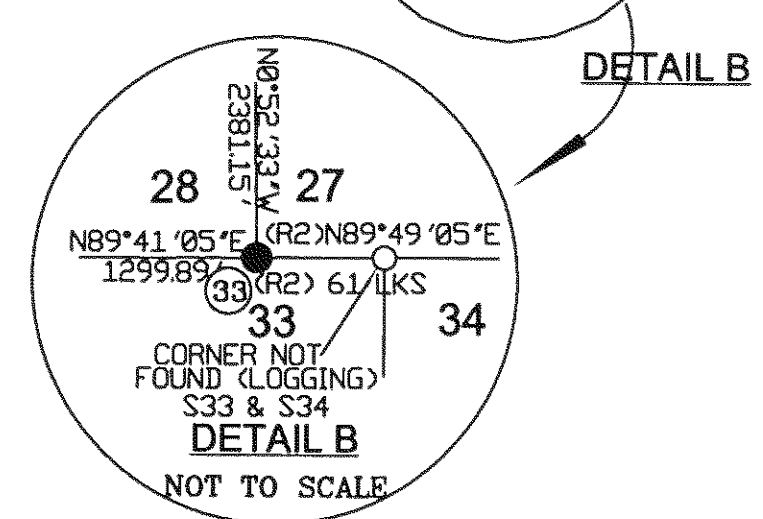
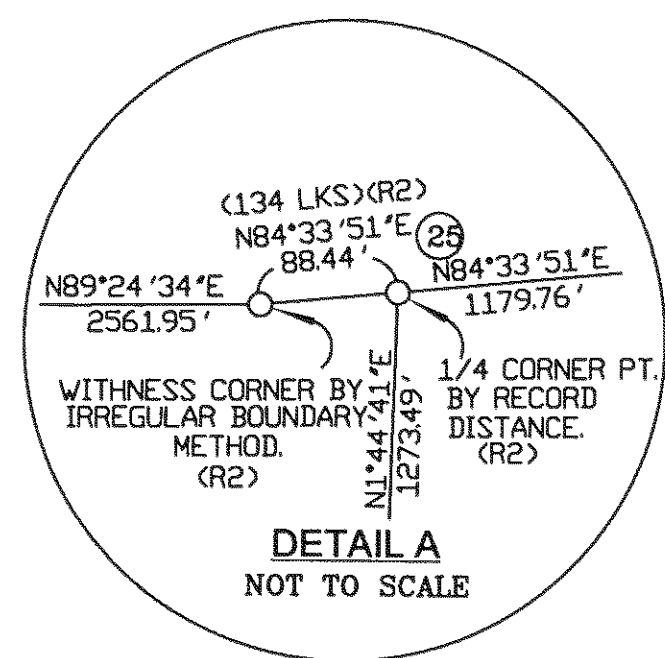


STATE PLANE COORDINATES
CALIFORNIA - ZONE 1 1983

$\theta = 0^\circ 35' 35''$ AT HPGN D CA 02 ES, MULTIPLY GRID DISTANCES BY 1.000276 TO GET GROUND DISTANCES.

| CORNER # | NORTHING | EASTING |
|----------|----------------|----------------|
| 25 | 1,948,767.9421 | 6,816,370.9592 |
| 28 | 1,946,085.1284 | 6,813,724.8739 |
| 24 | 1,948,733.1557 | 6,813,721.1066 |
| 31 | 1,943,954.7570 | 6,816,185.6973 |
| 30 | 1,946,349.9358 | 6,818,749.0409 |
| 33 | 1,943,969.0649 | 6,818,785.4363 |



GENERAL NOTES

A STANDARD UNITED STATES FOREST SERVICE (USFS) DRIVE-IN MONUMENT IS A 5/8" DIAMETER ALUMINUM ROD WITH A 3-1/4" ALUMINUM CAP EDGE-MARKED WITH THE USFS LOGO.

FOUND COLLINS ALMANOR FOREST CORNERS ARE RECORDED ON CORNER CARDS LOCATED AT THE CHESTER OFFICE OF C.A.F..

SURVEY HISTORY

(R1) GOVERNMENT LAND OFFICE NOTES - J.M. INGALLS 1866
 (R2) GOVERNMENT LAND OFFICE NOTES - VICTOR BARBER 1904
 (R3) 2RS6 RE5569 1961 H.S. MILES (CALTRANS)

- LEGEND**
- CORNER POINT - NOTHING SET
 - FOUND USFS CORNER
 - Ⓢ CORNER NOTE
 - SET STANDARD U.S. FOREST SERVICE DRIVE-IN MONUMENT (BEARING TREES AS NOTED)
 - PROPERTY BOUNDARY MARKED AND POSTED

RECORD OF SURVEY
 SECTION 28, T27N R8E, MDM,
 PLUMAS COUNTY, CALIFORNIA
 FOR
 U.S.D.A. PLUMAS NATIONAL FOREST
 P.O. BOX 11500, QUINCY, CA.
 DRAWN BY: B. SNOW DATE: OCTOBER, 2006