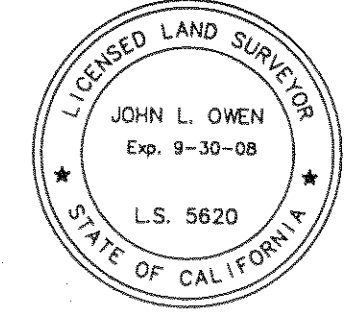


Basis of Bearings

The Basis of Bearings of this map is a portion of the North line of Section 3 as found monumented and shown as S89°26'28"E in Book 8 of Record of Surveys at Page 122, Plumas County records.

SURVEYOR'S STATEMENT

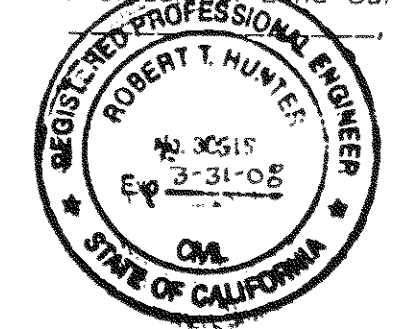
This map correctly represents a survey made by me or under my direction in conformance with the requirements of the Professional Land Surveyors' Act at the request of Plumas Sierra Rural Electric Cooperative in April, 2005.



John L. Owen
John L. Owen LS 5620

COUNTY SURVEYOR'S STATEMENT

This map has been examined in accordance with Section 8766 of the Professional Land Surveyors' Act this 13th day of April, 2007.

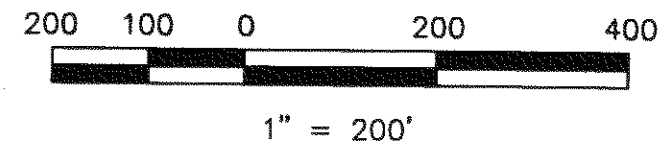
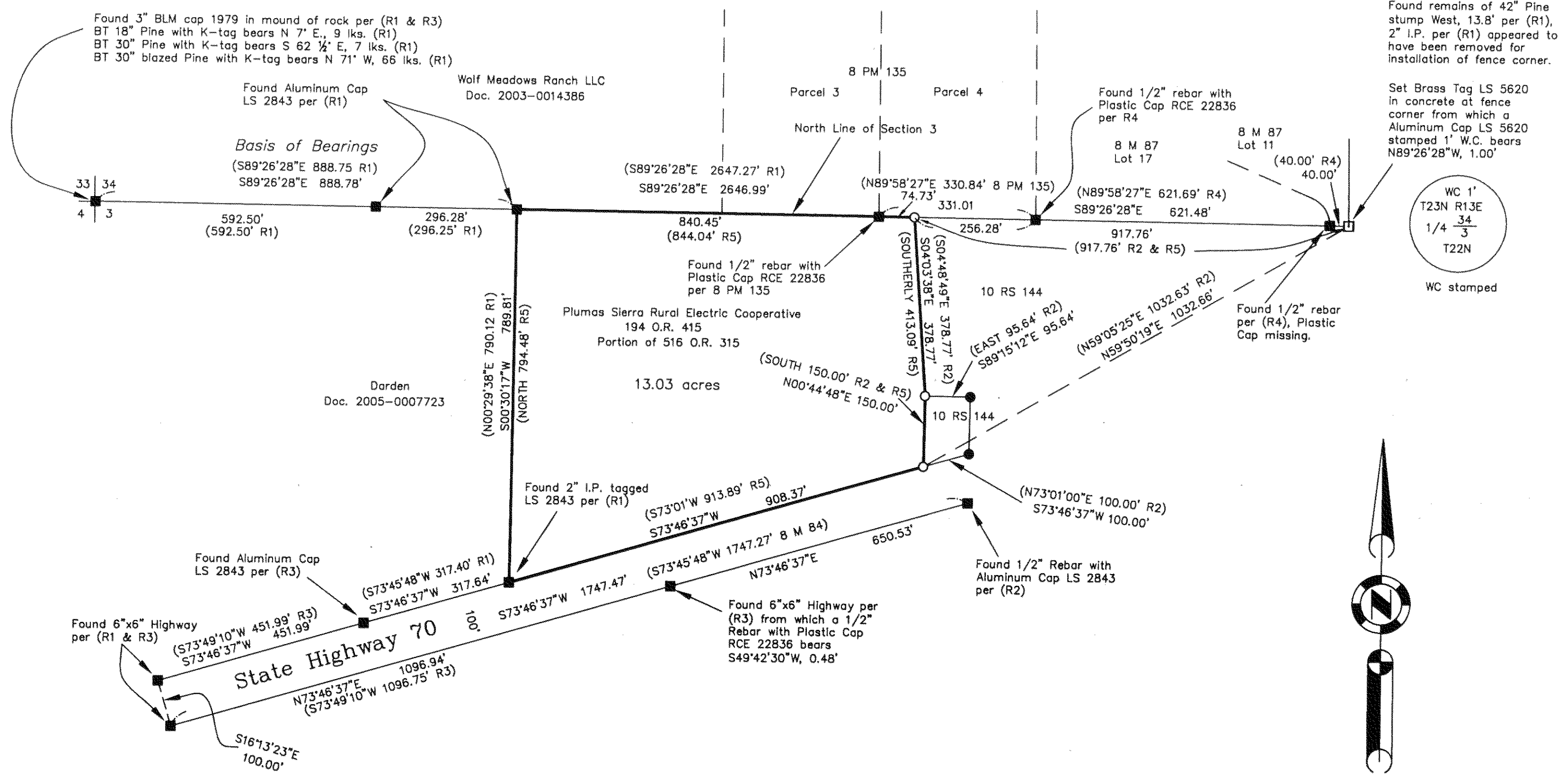


Robert T. Hunter
PLUMAS COUNTY SURVEYOR
License Expires 3-31-08
RCE 30515

RECORDER'S STATEMENT

Filed this 13th day of April, 2007 at 3:04 p.m. in Book 14 of Record of Surveys, at page 65, at the request of the County Surveyor.

Fee: 8⁰⁰
Document No. 2007-0003038
Kathleen Williams
County Recorder
By: *Deborah L. Jones*
Deputy



LEGEND

- FOUND point as described
- SET point as described
- FOUND 5/8" Rebar with Aluminum Cap LS 2843 per R2
- SET 5/8" Rebar with Aluminum Cap LS 5620
- (R1) RECORD per 8 RS 122
- (R2) RECORD per 10 RS 144
- (R3) RECORD per 12 PM 5
- (R4) RECORD per 8 M 87
- (R5) RECORD per 194 O.R. 415

**RECORD OF SURVEY
for
Plumas Sierra Rural
Electric Cooperative**

A portion of Section 3
T. 22 N., R. 13 E., M.D.M.
Plumas County ~ California
Scale 1" = 200' October 2006

Hamby Surveying Inc.
P.O. Box 1209
Portola, CA 96122
(530) 832-5571