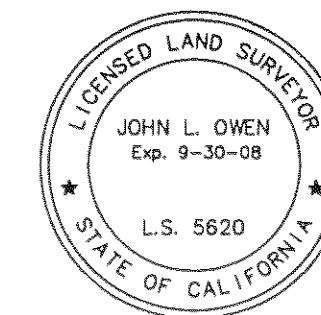


SURVEYOR'S STATEMENT

This map correctly represents a survey made by me or under my direction in conformance with the requirements of the Professional Land Surveyors' Act at the request of Sierra Pacific Industries in October, 2006.



John L. Owen
John L. Owen LS 5620
License Exp. 9-30-08

COUNTY SURVEYOR'S STATEMENT

This map has been examined in accordance with Section 8766 of the Professional Land Surveyors' Act this 30th day of May, 2007.

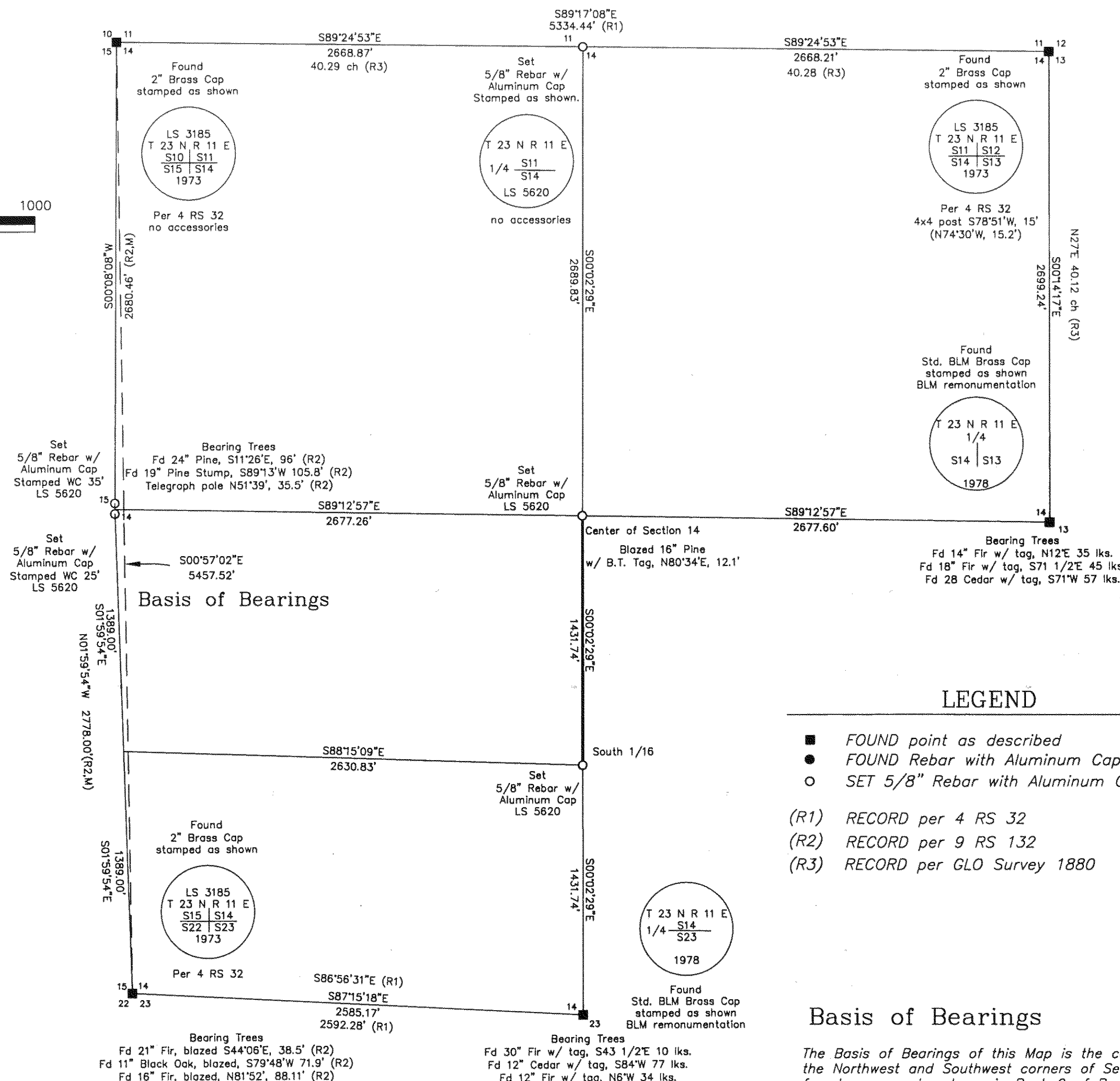
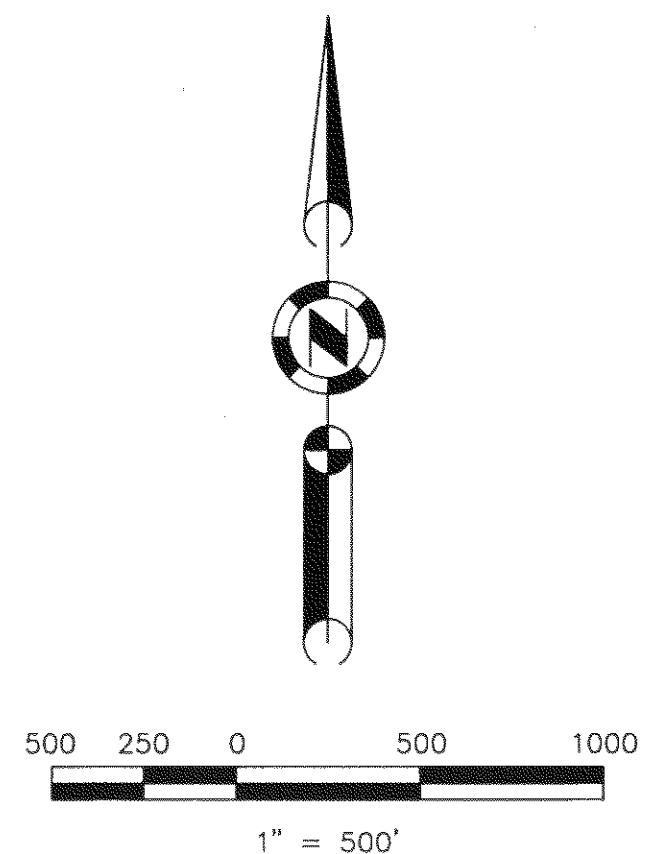


by: *R. Tom Hunter*
PLUMAS COUNTY SURVEYOR
License Expiration Date 3/31/08

RECORDER'S STATEMENT

Filed this 5th day of June, 2007 at 10:56a.m. in Book 14 of Record of Surveys, at page 69, at the request of the County Surveyor.

Fee: 8⁰⁰
Document No. 2007-0004571
Kathleen Williams
County Recorder
By: *Judy Morrow*
Deputy



**RECORD OF SURVEY
for
Sierra Pacific Industries**

A portion of Section 14,
Township 23 North, Range 11 East, M.D.M.
Plumas County ~ California
Scale 1" = 500' February, 2007

Hamby Surveying Inc.
P.O. Box 1209
Portola, CA 96122
(530) 832-5571