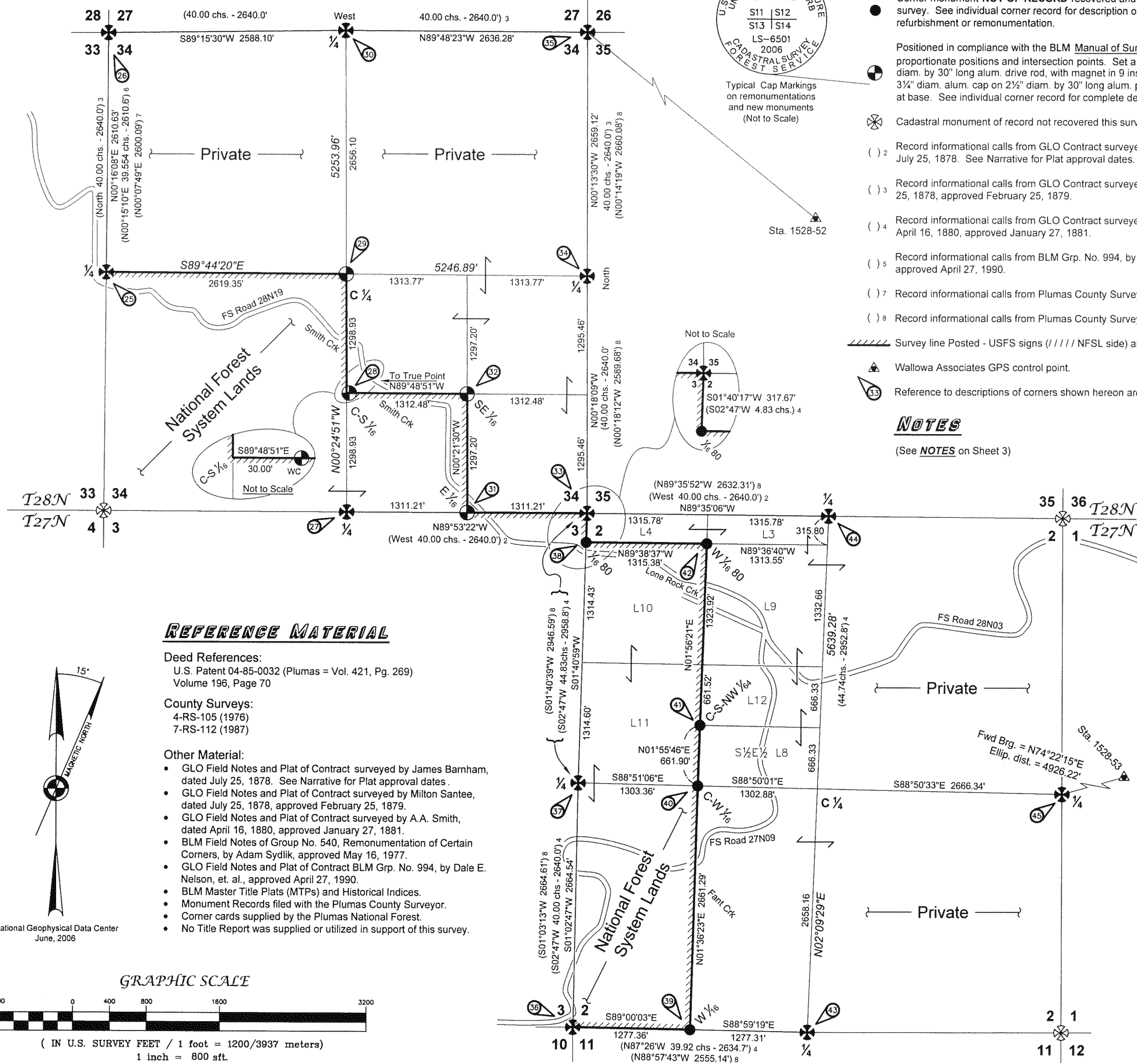


# Record of Survey

## Diamond Cadastral Survey Plumas National Forest



### LEGEND

- ⊗ Cadastral monument of record recovered this survey. See individual corner record for description of found condition and any refurbishment or remonumentation.
- Corner monument **NOT OF RECORD** recovered and position accepted by this survey. See individual corner record for description of found condition and any refurbishment or remonumentation.
- Positioned in compliance with the BLM Manual of Survey Instructions, 1973 at proportionate positions and intersection points. Set a 3/4" diam. alum. cap on 3/4" diam. by 30" long alum. drive rod, with magnet in 9 ins. long break-away base, or a 3/4" diam. alum. cap on 2 1/2" diam. by 30" long alum. post with clear DEEP-1 magnet at base. See individual corner record for complete description.
- ⊗ Cadastral monument of record not recovered this survey.
- ( ) 2 Record informational calls from GLO Contract surveyed by James Barnham, dated July 25, 1878. See Narrative for Plat approval dates.
- ( ) 3 Record informational calls from GLO Contract surveyed by Milton Santee, dated July 25, 1878, approved February 25, 1879.
- ( ) 4 Record informational calls from GLO Contract surveyed by A.A. Smith, dated April 16, 1880, approved January 27, 1881.
- ( ) 5 Record informational calls from BLM Grp. No. 994, by Dale E. Nelson, et. al., approved April 27, 1990.
- ( ) 7 Record informational calls from Plumas County Survey 4-RS-105 (1976).
- ( ) 8 Record informational calls from Plumas County Survey 7-RS-112 (1987).
- //// Survey line Posted - USFS signs ( / / / / / NFSL side) and Blazed.
- ▲ Wallowa Associates GPS control point.
- ⊗ Reference to descriptions of corners shown hereon are on sheets 6 to 9.

### NOTES

(See NOTES on Sheet 3)

### REFERENCE MATERIAL

#### Deed References:

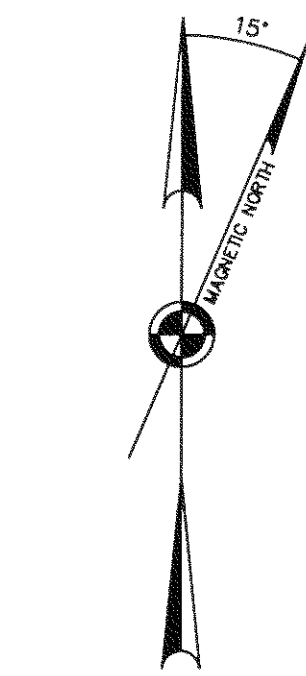
U.S. Patent 04-85-0032 (Plumas = Vol. 421, Pg. 269)  
Volume 196, Page 70

#### County Surveys:

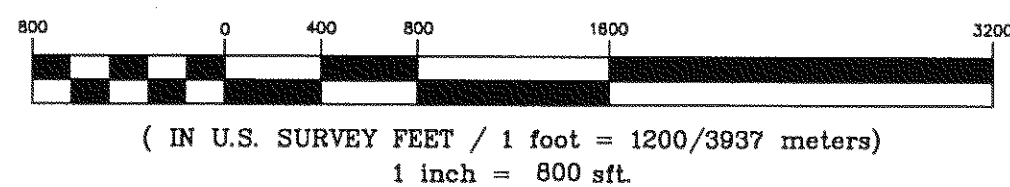
4-RS-105 (1976)  
7-RS-112 (1987)

#### Other Material:

- GLO Field Notes and Plat of Contract surveyed by James Barnham, dated July 25, 1878. See Narrative for Plat approval dates.
- GLO Field Notes and Plat of Contract surveyed by Milton Santee, dated July 25, 1878, approved February 25, 1879.
- GLO Field Notes and Plat of Contract surveyed by A.A. Smith, dated April 16, 1880, approved January 27, 1881.
- BLM Field Notes of Group No. 540, Remonumentation of Certain Corners, by Adam Sydlík, approved May 16, 1977.
- GLO Field Notes and Plat of Contract BLM Grp. No. 994, by Dale E. Nelson, et. al., approved April 27, 1990.
- BLM Master Title Plats (MTPs) and Historical Indices.
- Monument Records filed with the Plumas County Surveyor.
- Corner cards supplied by the Plumas National Forest.
- No Title Report was supplied or utilized in support of this survey.



### GRAPHIC SCALE



### NARRATIVE

#### History:

The common boundary between Townships 27 and 28 North, Range 11 East, MDM, CA, was originally surveyed by James Barnham, under GLO Contract dated July 25, 1878, with T28N, R11E, Plat approval date of February 25, 1879, and no approval date for the Contract or Field Notes available from the BLM.

The subdivision of Township 27 North, Range 11 East, MDM, CA, was surveyed by A.A. Smith, under GLO Contract dated April 16, 1880, approved January 27, 1881.

The subdivision of Township 28 North, Range 11 East, MDM, CA, was surveyed by Milton Santee, under GLO Contract dated July 25, 1878, approved February 25, 1879.

Certain corners in Tps 27 and 28N, R11E, were remonumented by Adam Sydlík, Cadastral Surveyor, under Group No. 540, approved May 16, 1977.

A Supplemental Plat of the northwest quarter-section of section 2, T27N, R11E, was approved by BLM on October 16, 1987.

A resurvey of the line between sections 33 and 34, T28N, R11E, MDM, CA, was surveyed by Dale E. Nelson, Cadastral Surveyor, et. al., under BLM Group No. 994, approved April 27, 1990.

#### Procedure:

Found a 1 in. or 1 1/2 ins. diam. iron pipe, with brass tag stamped "LS 4655" inserted in top, flush with top of rock collar or mound, and bearing trees, ALL NOT OF RECORD, at the following corner positions: the W1/16 cor. of secs. 2 and 11, the C-W 1/16 cor. of sec. 2, the C-S-NW 1/64 cor. of sec. 2, the W1/16 80 cor. of sec. 2 (southeast corner of Lot 4), and the 1/16 80 cor. of secs. 2 and 3 (southwest corner of Lot 4), all in T27N, R11E. These monuments were recovered within 0.4 ft. of the calculated positions for said corners, except the W1/16 80 cor. of sec. 2 being at 0.9 ft. The alum. tags on the recovered bearing trees are dated 1986 and 1987. These monumented positions are in harmony with survey by Louis A. Vonderscheer, LS 4655, dated January 1987, and filed as Record of Survey 7-RS-112 with the Plumas County Surveyor. Said survey does not show these corners as being set. The found monumented positions are accepted by this survey as shown hereon.

The positions of all recovered monuments shown hereon were accepted as undisturbed, except by the ravages of time, unless noted otherwise in the corner descriptions.

The road(s) shown hereon are for informational purposes only, reflect no claim as to legal status, and, except where tied by survey when crossing a posted line, were digitized from a U.S.G.S. Quadrangle.

<b>Diamond Cadastral Survey Plumas National Forest</b>		
LOCATED WITHIN Section 34, Township 28 North, Range 11 East, Section 2, Township 27 North, Range 11 East, Mount Diablo Meridian, California		
<b>Wallowa Associates</b> 303 S.E. Alamo Street Enterprise, Oregon 97828 (541) 426-9049		
SCALE 1" = 800'	SHEET No. 6 of 9	DATE OF SURVEY Beginning: May, 2006 Ending: November, 2006
DRAWN BY RCW	CHECKED RCW	PROJECT No. WA G401-02/1528
DATE 3/07		