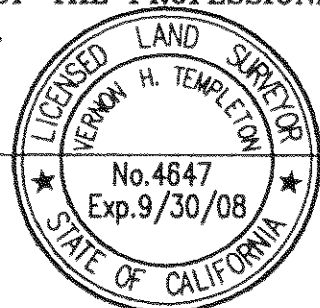


SCALE : 1" = 20'

**SURVEYOR'S STATEMENT**

THIS MAP CORRECTLY REPRESENTS A SURVEY MADE BY ME OR UNDER MY DIRECTION IN CONFORMANCE WITH THE REQUIREMENTS OF THE PROFESSIONAL LAND SURVEYOR'S ACT AT THE REQUEST OF BRENT CORDELL.

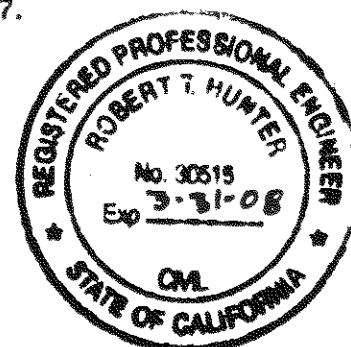
*Vernon H. Templeton*  
VERNON H. TEMPLETON, L.S. 4647



**COUNTY SURVEYOR'S STATEMENT**

THIS MAP HAS BEEN EXAMINED IN ACCORDANCE WITH SECTION 8766 OF THE PROFESSIONAL LAND SURVEYOR'S ACT THIS 5<sup>th</sup> DAY OF Sept, 2007.

*R. Tom Hunter*  
R. TOM HUNTER, PLUMAS COUNTY SURVEYOR R.C.E. 30515, EXP. 3/31/08

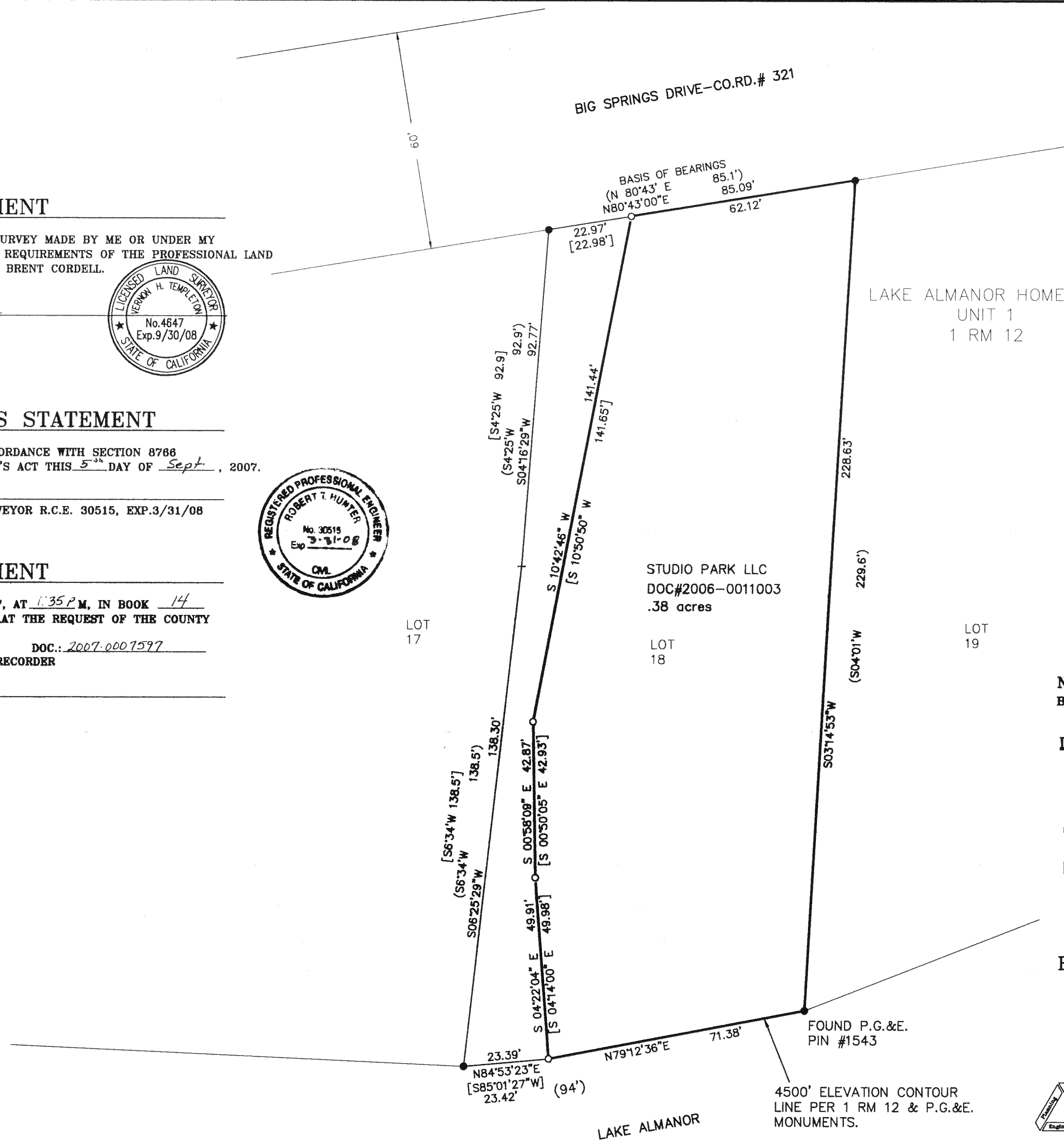


**RECORDER'S STATEMENT**

FILED THIS 12<sup>th</sup> DAY OF September, 2007, AT 1:35 P.M., IN BOOK 14 OF RECORD OF SURVEYS, AT PAGE 90, AT THE REQUEST OF THE COUNTY SURVEYOR.

FEE: \$8.00 DOC.: 2007-0007597  
KATHLEEN WILLIAMS, PLUMAS COUNTY RECORDER

*Laura L. Davis*  
DEPUTY



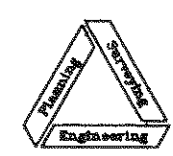
NOTE:  
BASIS OF BEARING N80°43'E PER 1 RM 12.

- LEGEND**
- FOUND 1/2" IRON PIPE PER 1 RM 12 EXCEPT AS NOTED
  - SET 1/2" IRON PIPE PLASTIC CAP LS 4647
  - ( ) INDICATES RECORD INFORMATION PER 1 RM 12.
  - [ ] INDICATES RECORD INFORMATION PER 2006-0011003.

**RECORD OF SURVEY FOR STUDIO PARK LLC**

IN SECTION 17, T.28 N., R.8 E., M.D.B. & M. PLUMAS COUNTY, CALIFORNIA

SCALE : 1" = 20'



**NST Engineering, Inc.**  
1495 Riverside Drive  
Susanville, CA 96130  
(530) 257-5173