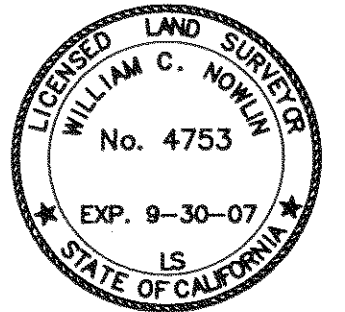


SURVEYOR'S STATEMENT

THIS MAP CORRECTLY REPRESENTS A SURVEY MADE BY ME OR UNDER MY DIRECTION IN CONFORMANCE WITH THE REQUIREMENTS OF THE PROFESSIONAL LAND SURVEYORS' ACT AT THE REQUEST OF THE US FOREST SERVICE IN SEPTEMBER, 2005

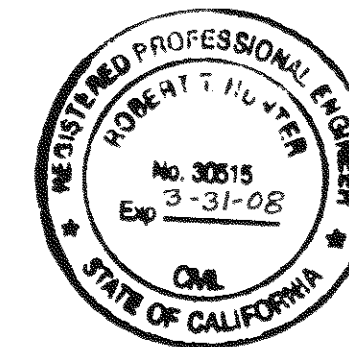


SIGNED William C. Nowlin
WILLIAM C. NOWLIN L.S. 4753

COUNTY SURVEYOR'S STATEMENT

THIS MAP HAS BEEN EXAMINED IN ACCORDANCE WITH SECTION 8766 OF THE PROFESSIONAL LAND SURVEYORS' ACT THIS 28th DAY OF Sept., 2007.

SIGNED R. Tom Hunter
TOM HUNTER R.C.E. 30515
PLUMAS COUNTY SURVEYOR
REG. EXP. 3/31/08



COUNTY RECORDER'S STATEMENT

FILED THIS 2ND DAY OF OCTOBER, 2007, AT 3:36 P. M., IN BOOK 14RS OF RECORD OF SURVEYS AT PAGE(S) 94-101, AT THE REQUEST OF THE PLUMAS COUNTY SURVEYOR.

PLUMAS COUNTY RECORDER
KATHLEEN WILLIAMS

BY Deborah A. Hunter
DEPUTY

FEE \$2000 DOC.# 2007-0008188

RECORD OF SURVEY

FOR
USDA FOREST SERVICE
PLUMAS NATIONAL FOREST

"STRAWBERRY"

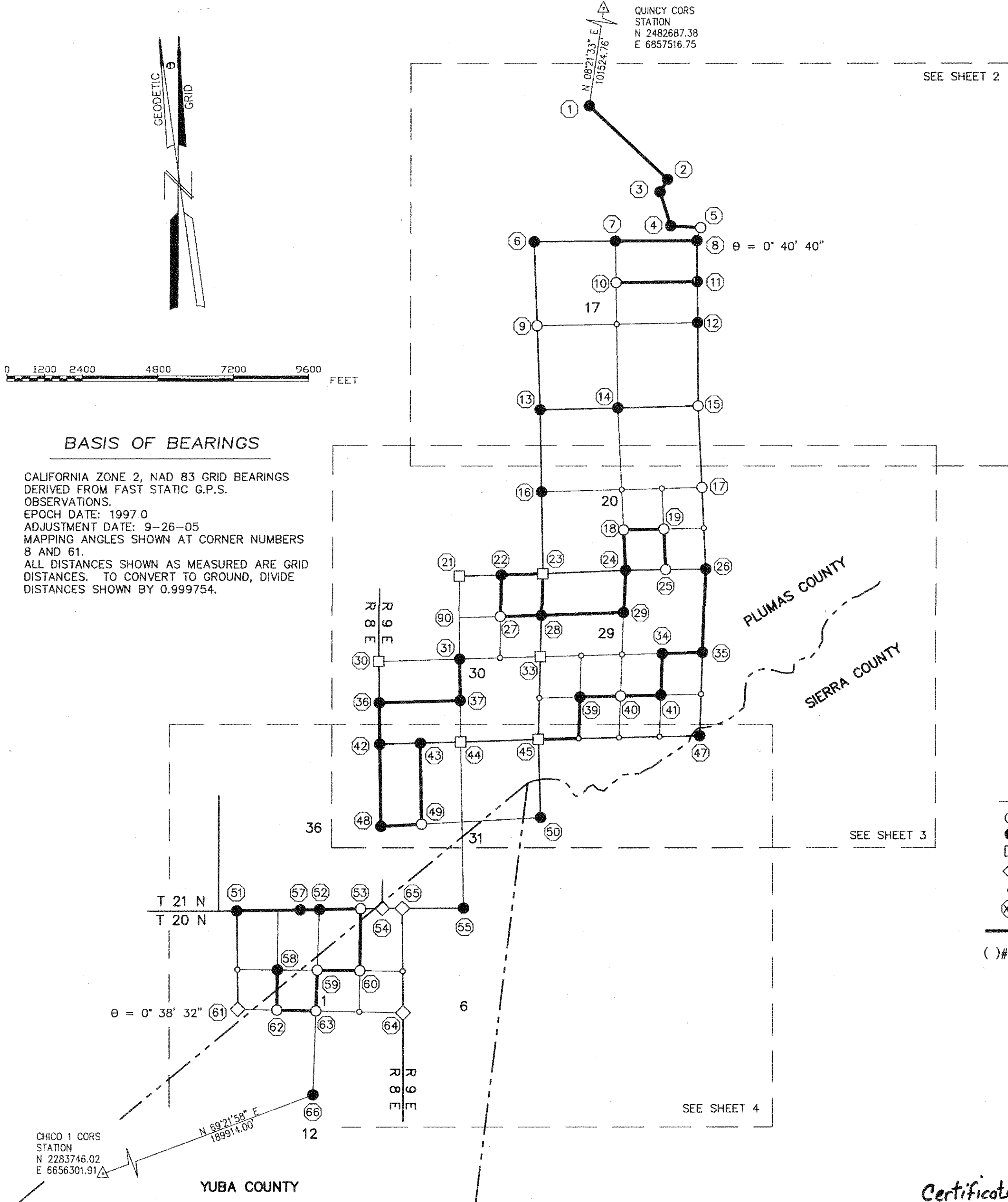
IN SECTIONS 8, 17, 20, 29 AND 30,
T 21 N, R 9 E, AND IN SECTION 1,
T 20N, R 8 E, MDM,
IN THE UNINCORPORATED AREA OF
PLUMAS COUNTY,
STATE OF CALIFORNIA



SCALE: 1" = 2400' DATE: MARCH, 2007
SHEET 1 OF 7

NOTE:

ALL CALCULATIONS TO PROPORTION SECTION AND 1/4 CORNERS PERFORMED USING BLM'S "CMM" PROGRAM WHICH WORKS USING GEODETIC COORDINATES. THE CLOSER A LINE IS TO EAST-WEST THE MORE PRONOUNCED IT'S APPARENT CURVE, AND ON THE GRID, POINTS ALONG THESE CURVED LINES APPEAR AS ANGLE POINTS.



BASIS OF BEARINGS
CALIFORNIA ZONE 2, NAD 83 GRID BEARINGS DERIVED FROM FAST STATIC G.P.S. OBSERVATIONS.
EPOCH DATE: 1997.0
ADJUSTMENT DATE: 9-26-05
MAPPING ANGLES SHOWN AT CORNER NUMBERS 8 AND 61.
ALL DISTANCES SHOWN AS MEASURED ARE GRID DISTANCES. TO CONVERT TO GROUND, DIVIDE DISTANCES SHOWN BY 0.999754.



LEGEND

- SET MONUMENT - SEE CORNER NOTES
- FOUND CORNER - SEE CORNER NOTES
- RECORD POSITION PER 12 RS 37 - PCR
- ◇ RECORD POSITION PER 9 RS 84 - PCR
- CALCULATED POINT
- ⊗ CORNER NUMBER
- LINES MARKED AND POSTED
- ()#+M RECORD AND MEASURED

Certificate of Correction 2008-0000446