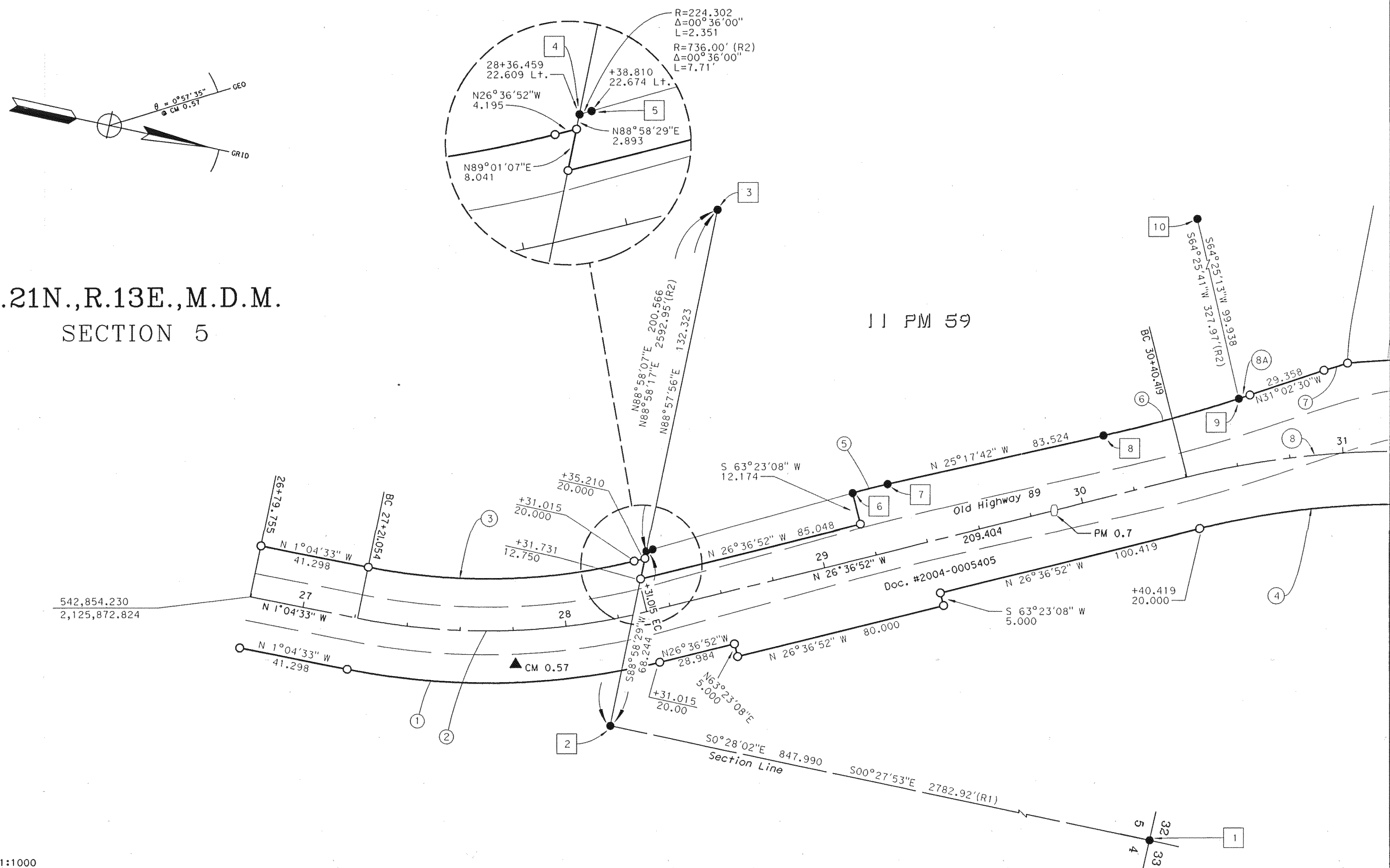
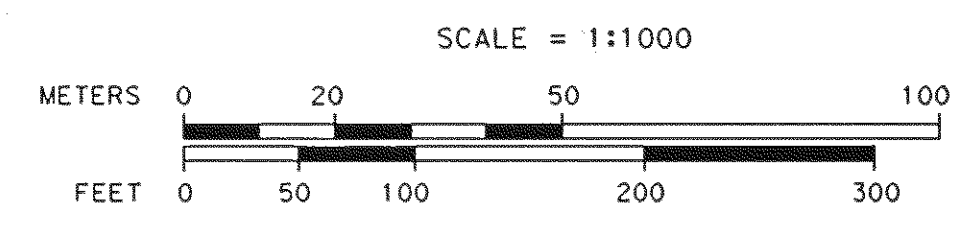


T.21N.,R.13E.,M.D.M.  
SECTION 5

11 PM 59

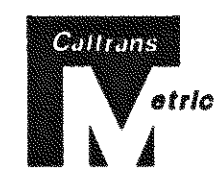


CM 0.43 ▲



BEARINGS AND DISTANCES ARE BASED ON THE CALIFORNIA COORDINATE SYSTEM OF 1983(1991.35), ZONE 1. DIVIDE DISTANCES BY 0.9998671 TO OBTAIN GROUND LEVEL DISTANCES. DISTANCES ARE EXPRESSED IN METERS UNLESS OTHERWISE NOTED. MULTIPLY DISTANCES EXPRESSED IN METERS BY 3937/1200 TO OBTAIN DISTANCES EXPRESSED IN U.S. SURVEY FEET.

SUPPLEMENTARY INFORMATION MAY BE OBTAINED FROM THE DISTRICT OFFICE, SURVEY DEPARTMENT OR RIGHT OF WAY ENGINEERING DEPARTMENT, 4300 CATERPILLAR RD., REDDING, CA.



CURVE DATA TABLE			
NO.	RADIUS	DELTA	LENGTH
1	266.700	25°32'19"	118.876
2	246.700	25°32'19"	109.962
3	226.700	25°32'19"	101.048
4	300.000	45°22'23"	237.573
5	259.046	2°58'22"	13.440
R2	850.00'	2°58'28"	40.23'
6	571.425	5°44'49"	57.316
R2	1875.00'	5°18'20"	173.63'
7	281.551	42°24'42"	208.411
8	320.000	45°22'23"	253.411
8A	571.425	0°26'33"	4.412

LEGEND	
○	SET #6 REBAR w/ALUM. CAP STAMPED "CALTRANS"
●	MONUMENT FOUND AS NOTED
○	NO MONUMENT FOUND OR SET
▲	CALTRANS CONTROL LINE MONUMENT
R1	RECORD DATA PER 5 RS 140
R2	RECORD DATA PER 11 PM 59

STATE OF CALIFORNIA  
BUSINESS, TRANSPORTATION, AND HOUSING AGENCY  
DEPARTMENT OF TRANSPORTATION  
DISTRICT 02  
**RECORD OF SURVEY  
OF MONUMENTATION**  
IN THE UNINCORPORATED TERRITORY OF THE  
COUNTY OF PLUMAS, STATE OF CALIFORNIA  
ALONG STATE HIGHWAY ROUTE 89 P.M.O.0/2.7  
IN SECTION 5, T.21 N., R.13 E.,M.D.M.  
DECEMBER 2007 SHEET 3 OF 9