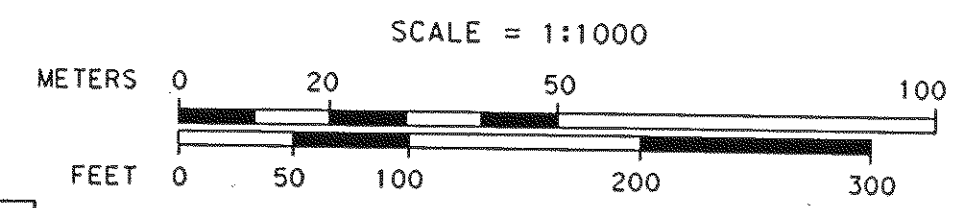
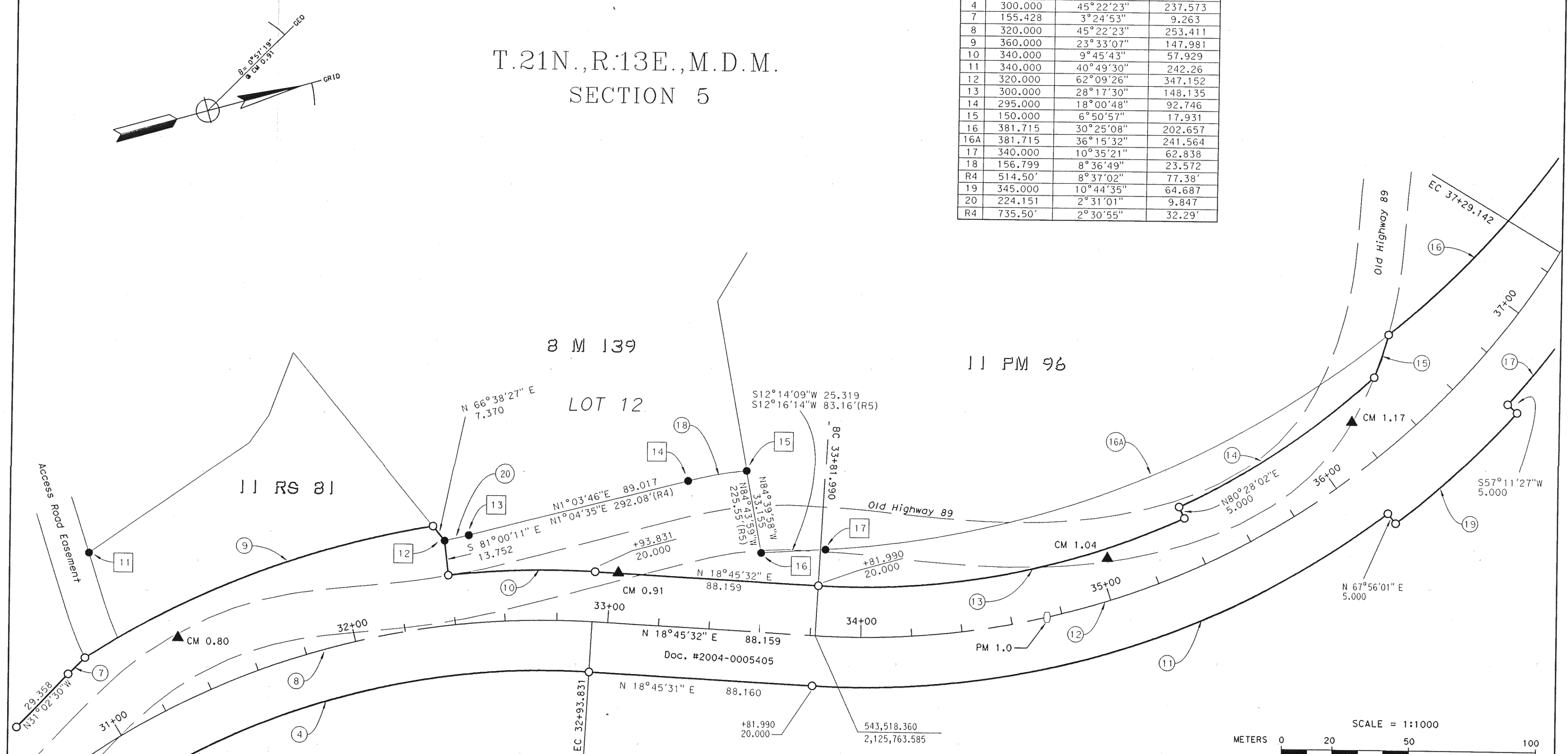


T.21N.,R.13E.,M.D.M.
SECTION 5

CURVE DATA TABLE			
NO.	RADIUS	DELTA	LENGTH
4	300.000	45°22'23"	237.573
7	155.428	3°24'53"	9.263
8	320.000	45°22'23"	253.411
9	360.000	23°33'07"	147.981
10	340.000	9°45'43"	57.929
11	340.000	40°49'30"	242.26
12	320.000	62°09'26"	347.152
13	300.000	28°17'30"	148.135
14	295.000	18°00'48"	92.746
15	150.000	6°50'57"	17.931
16	381.715	30°25'08"	202.657
16A	381.715	36°15'32"	241.564
17	340.000	10°35'21"	62.838
18	156.799	8°36'49"	23.572
R4	514.50'	8°37'02"	77.38'
19	345.000	10°44'35"	64.687
20	224.151	2°31'01"	9.847
R4	735.50'	2°30'55"	32.29'



LEGEND	
○	SET #6 REBAR w/ALUM. CAP STAMPED "CALTRANS"
●	MONUMENT FOUND AS NOTED
○	NO MONUMENT FOUND OR SET
▲	CALTRANS CONTROL LINE MONUMENT
R3	RECORD DATA PER 11 RS 81
R4	RECORD DATA PER 8 M 139
R5	RECORD DATA PER 11 PM 96

STATE OF CALIFORNIA
BUSINESS, TRANSPORTATION, AND HOUSING AGENCY
DEPARTMENT OF TRANSPORTATION
DISTRICT 02
**RECORD OF SURVEY
OF MONUMENTATION**
IN THE UNINCORPORATED TERRITORY OF THE
COUNTY OF PLUMAS, STATE OF CALIFORNIA
ALONG STATE HIGHWAY ROUTE 89 P.M.O.0/2.7
IN SECTION 5, T.21 N., R.13 E., M.D.M.
DECEMBER 2007 SHEET 4 OF 9

BEARINGS AND DISTANCES ARE BASED ON THE CALIFORNIA COORDINATE SYSTEM OF 1983(1991.35), ZONE 1. DIVIDE DISTANCES BY 0.9998671 TO OBTAIN GROUND LEVEL DISTANCES. DISTANCES ARE EXPRESSED IN METERS UNLESS OTHERWISE NOTED. MULTIPLY DISTANCES EXPRESSED IN METERS BY 3937/1200 TO OBTAIN DISTANCES EXPRESSED IN U.S. SURVEY FEET.

SUPPLEMENTARY INFORMATION MAY BE OBTAINED FROM THE DISTRICT OFFICE SURVEY DEPARTMENT OR RIGHT OF WAY ENGINEERING DEPARTMENT, 4300 CATERPILLAR RD., REDDING, CA.