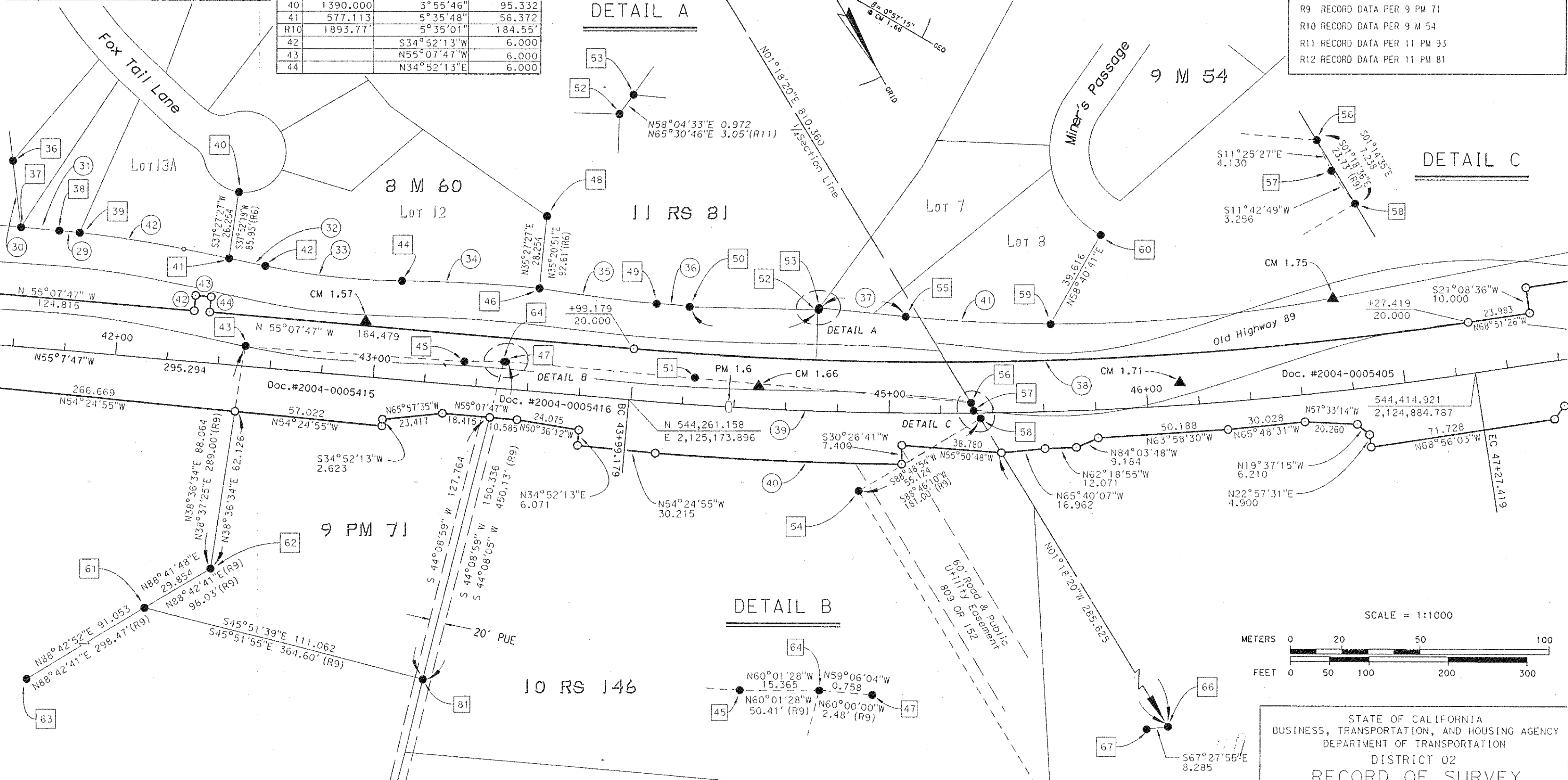


T.21N., R.13E., M.D.M.
SECTION 5

NO.	RADIUS	DELTA/BEARING	LEN/DIST
29	413.593	1°05'57"	7.934
R6	1357.11'	1°05'54"	26.02'
30		N22°47'04"E	26.111
R6		N22°47'51"E	85.61'
31		N55°07'47"W	14.920
R6		N55°02'13"W	48.94'
32		N48°15'03"W	14.290
R6		N48°15'43"W	46.87'
33	269.923	11°17'26"	53.190
R6	885.69'	11°17'28"	174.54'

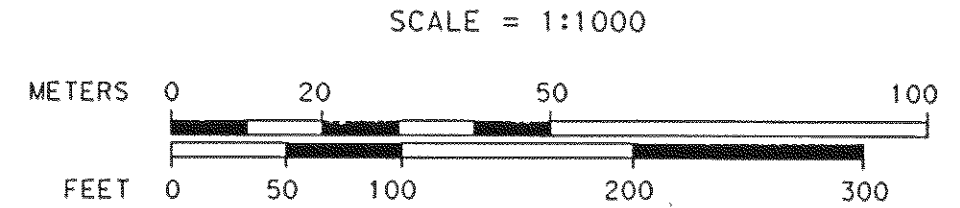
NO.	RADIUS	DELTA/BEARING	LEN/DIST
34	624.273	4°54'01"	53.391
R6	2048.41'	4°54'02"	175.21'
35	624.240	4°11'05"	45.593
R12	2048.41'	4°11'01"	149.57'
36	89.440	8°13'31"	12.840
R12	293.48'	8°13'27"	42.13'
37		N54°24'40"W	33.523
R10		N54°24'24"W	110.05'
38	1350.000	10°53'27"	256.608
39	1370.000	13°43'39"	328.240
40	1390.000	3°55'46"	95.332
41	577.113	5°35'48"	56.372
R10	1893.77'	5°35'01"	184.55'
42		S34°52'13"W	6.000
43		N55°07'47"W	6.000
44		N34°52'13"E	6.000

LEGEND	
○	SET #6 REBAR w/ALUM. CAP STAMPED "CALTRANS"
●	MONUMENT FOUND AS NOTED ON SHEET 2
○	NO MONUMENT FOUND OR SET
▲	CALTRANS CONTROL LINE MONUMENT
R6	RECORD DATA PER 8 M 60
R8	RECORD DATA PER 11 RS 133
R9	RECORD DATA PER 9 PM 71
R10	RECORD DATA PER 9 M 54
R11	RECORD DATA PER 11 PM 93
R12	RECORD DATA PER 11 PM 81



BEARINGS AND DISTANCES ARE BASED ON THE CALIFORNIA COORDINATE SYSTEM OF 1983(1991.35), ZONE 1. DIVIDE DISTANCES BY 0.9998671 TO OBTAIN GROUND LEVEL DISTANCES. DISTANCES ARE EXPRESSED IN METERS UNLESS OTHERWISE NOTED. MULTIPLY DISTANCES EXPRESSED IN METERS BY 3937/1200 TO OBTAIN DISTANCES EXPRESSED IN U.S. SURVEY FEET.

SUPPLEMENTARY INFORMATION MAY BE OBTAINED FROM THE DISTRICT OFFICE SURVEY DEPARTMENT OR RIGHT OF WAY ENGINEERING DEPARTMENT, 4300 CATERPILLAR RD., REDDING, CA.



STATE OF CALIFORNIA
BUSINESS, TRANSPORTATION, AND HOUSING AGENCY
DEPARTMENT OF TRANSPORTATION
DISTRICT 02
**RECORD OF SURVEY
OF MONUMENTATION**
IN THE UNINCORPORATED TERRITORY OF THE
COUNTY OF PLUMAS, STATE OF CALIFORNIA
ALONG STATE HIGHWAY ROUTE 89 P.M.O.0/2.7
IN SECTION 5, T.21 N., R.13 E., M.D.M.
DECEMBER 2007 SHEET 6 OF 9