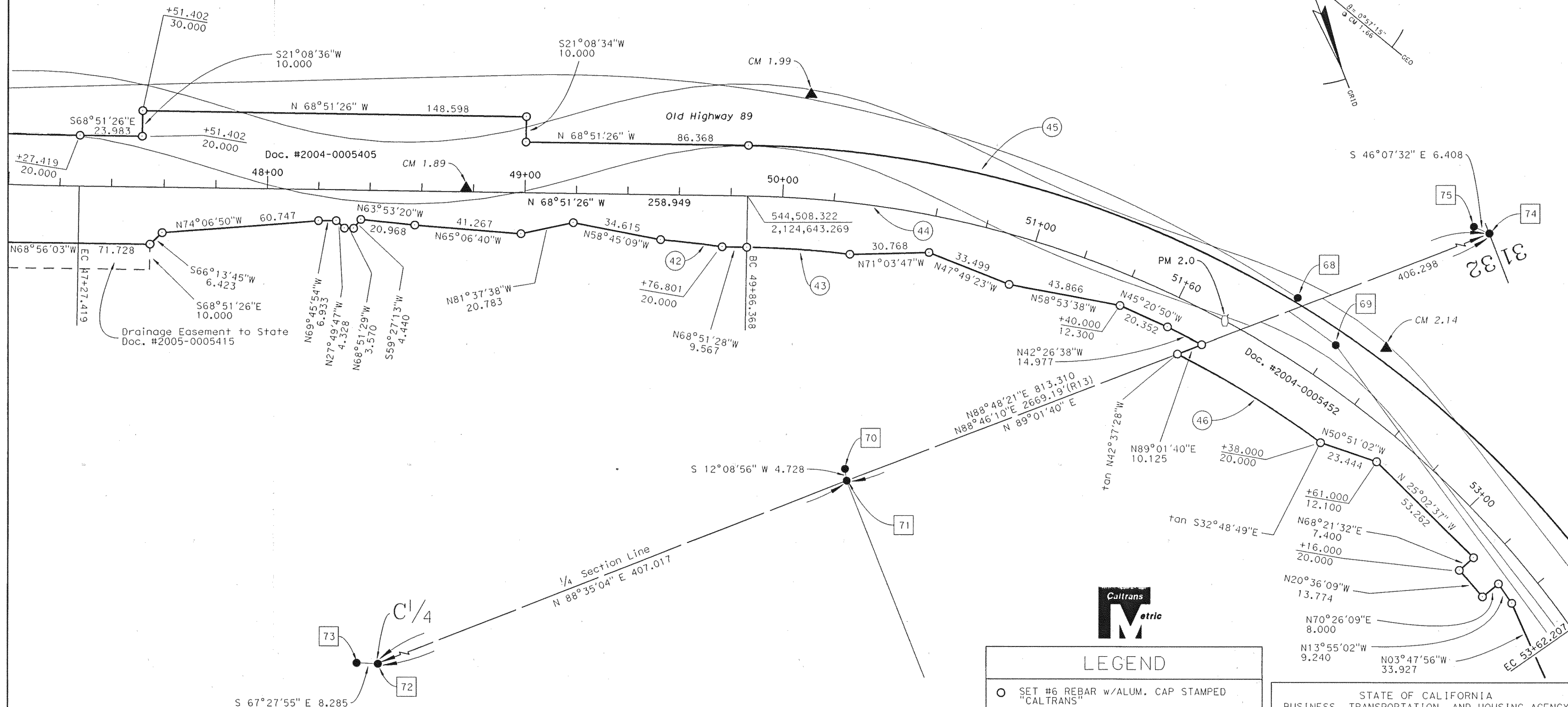


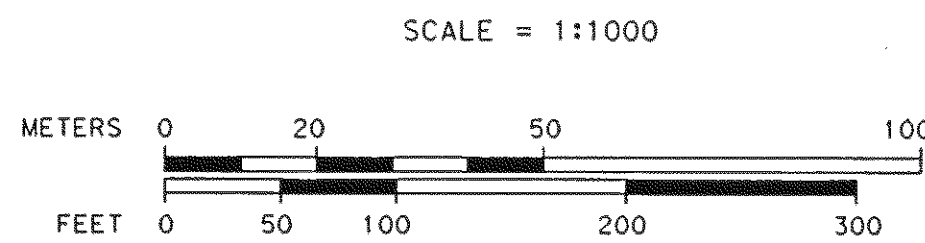
Data Table			
NO.		DELTA/BEARING	LEN/DIST
42	460.000	2°59'01"	23.954
43	380.000	6°03'03"	40.131
44	400.000	53°50'06"	375.838
45	420.000	53°50'05"	394.630
46	380.000	9°48'39"	65.068

T.22N., R.13E., M.D.M.
SECTION 32



BEARINGS AND DISTANCES ARE BASED ON THE CALIFORNIA COORDINATE SYSTEM OF 1983(1991.35), ZONE 1. DIVIDE DISTANCES BY 0.9998671 TO OBTAIN GROUND LEVEL DISTANCES. DISTANCES ARE EXPRESSED IN METERS UNLESS OTHERWISE NOTED. MULTIPLY DISTANCES EXPRESSED IN METERS BY 3937/1200 TO OBTAIN DISTANCES EXPRESSED IN U.S. SURVEY FEET.

SUPPLEMENTARY INFORMATION MAY BE OBTAINED FROM THE DISTRICT OFFICE SURVEY DEPARTMENT OR RIGHT OF WAY ENGINEERING DEPARTMENT, 4300 CATERPILLAR RD., REDDING, CA.



LEGEND

- SET #6 REBAR w/ALUM. CAP STAMPED "CALTRANS"
- MONUMENT FOUND AS NOTED ON SHEET 2
- NO MONUMENT FOUND OR SET
- ▲ CALTRANS CONTROL LINE MONUMENT
- R13 RECORD DATA PER 5 RS 140
- ① FOUND MONUMENT AS NOTED ON SHEET 2
- ① CURVE/COURSE DATA

STATE OF CALIFORNIA
BUSINESS, TRANSPORTATION, AND HOUSING AGENCY
DEPARTMENT OF TRANSPORTATION
DISTRICT 02
**RECORD OF SURVEY
OF MONUMENTATION**
IN THE UNINCORPORATED TERRITORY OF THE
COUNTY OF PLUMAS, STATE OF CALIFORNIA
ALONG STATE HIGHWAY ROUTE 89 P.M.O.0/2.7
IN SECTION 32, T.22 N., R.13 E., M.D.M.
DECEMBER 2007 SHEET 7 OF 9